

NOTES:

- Flare Stack is to be located a min. of 100' from the wellhead.
- Round corners at 35' radius or as needed.
- Contours shown at 2' intervals.
- Cut/Fill slopes 1 1/2:1 (Typ. except where noted).



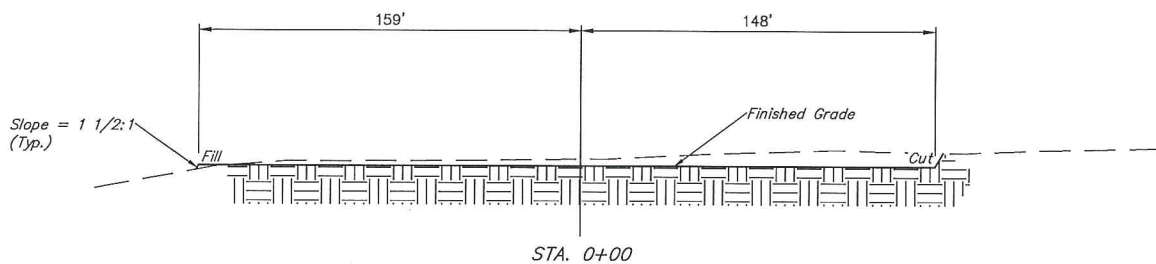
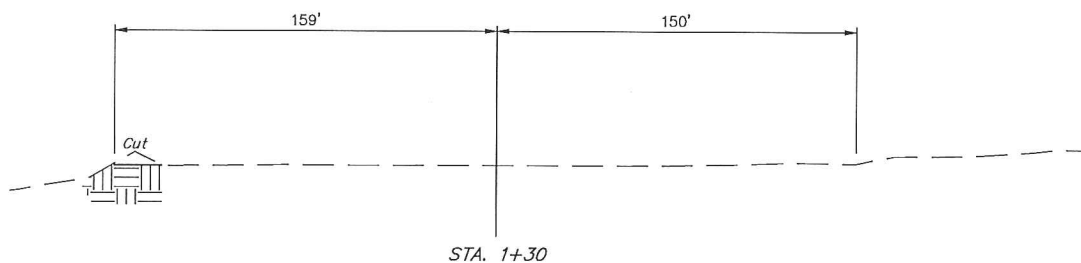
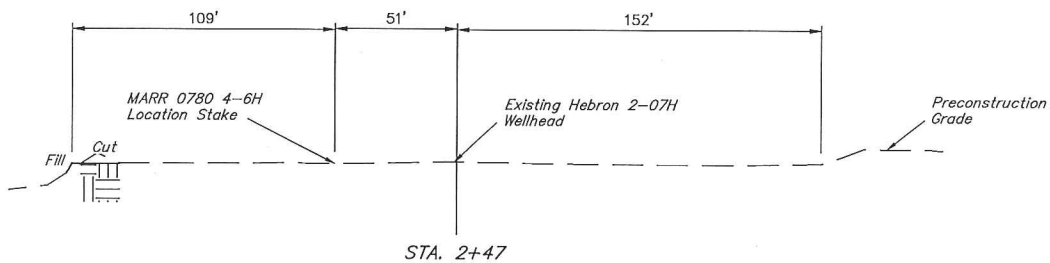
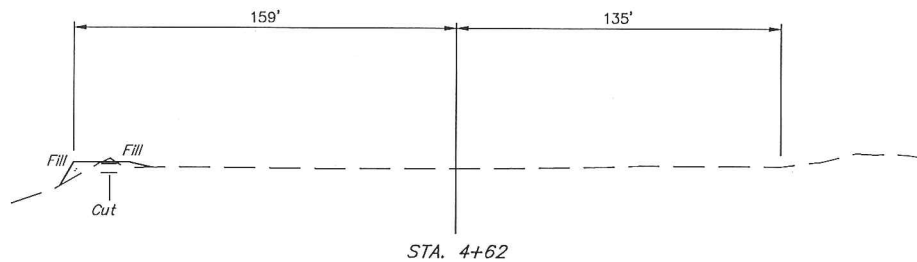
UELS, LLC
Corporate Office * 85 South 200 East
Vernal, UT 84078 * (435) 789-1017

SandRidge Exploration & Production, LLC

HEBRON / MARR 7 PAD
NW 1/4 NE 1/4, SECTION 7, T7N, R80W, 6th P.M.
JACKSON COUNTY, COLORADO

SURVEYED BY	DARRIN SHANKS	08-17-16	SCALE
DRAWN BY	C.D.L.	08-18-16	1" = 50'
CONSTRUCTION LAYOUT		FIGURE #1	

X-Section
Scale
1" = 50'



APPROXIMATE EARTHWORK QUANTITIES	
(6") TOPSOIL STRIPPING (NEW CONSTRUCTION ONLY)	500 Cu. Yds.
REMAINING LOCATION	720 Cu. Yds.
TOTAL CUT	1,220 Cu. Yds.
FILL	220 Cu. Yds.
EXCESS MATERIAL	1,000 Cu. Yds.
TOPSOIL	500 Cu. Yds.
EXCESS UNBALANCE (After Interim Rehabilitation)	500 Cu. Yds.

APPROXIMATE SURFACE DISTURBANCE AREAS		
	DISTANCE	ACRES
WELL PAD EXPANSION DISTURBANCE	NA	±0.583
EXISTING PAD DISTURBANCE	NA	±3.380
EXISTING ACCESS ROAD DISTURBANCE	±1,263'	NA
TOTAL SURFACE USE AREA		±3.963

NOTES:

- Fill quantity includes 5% for compaction.
- Calculations based on 6" of topsoil stripping.
- Cut/Fill slopes 1 1/2:1 (Typ. except where noted).

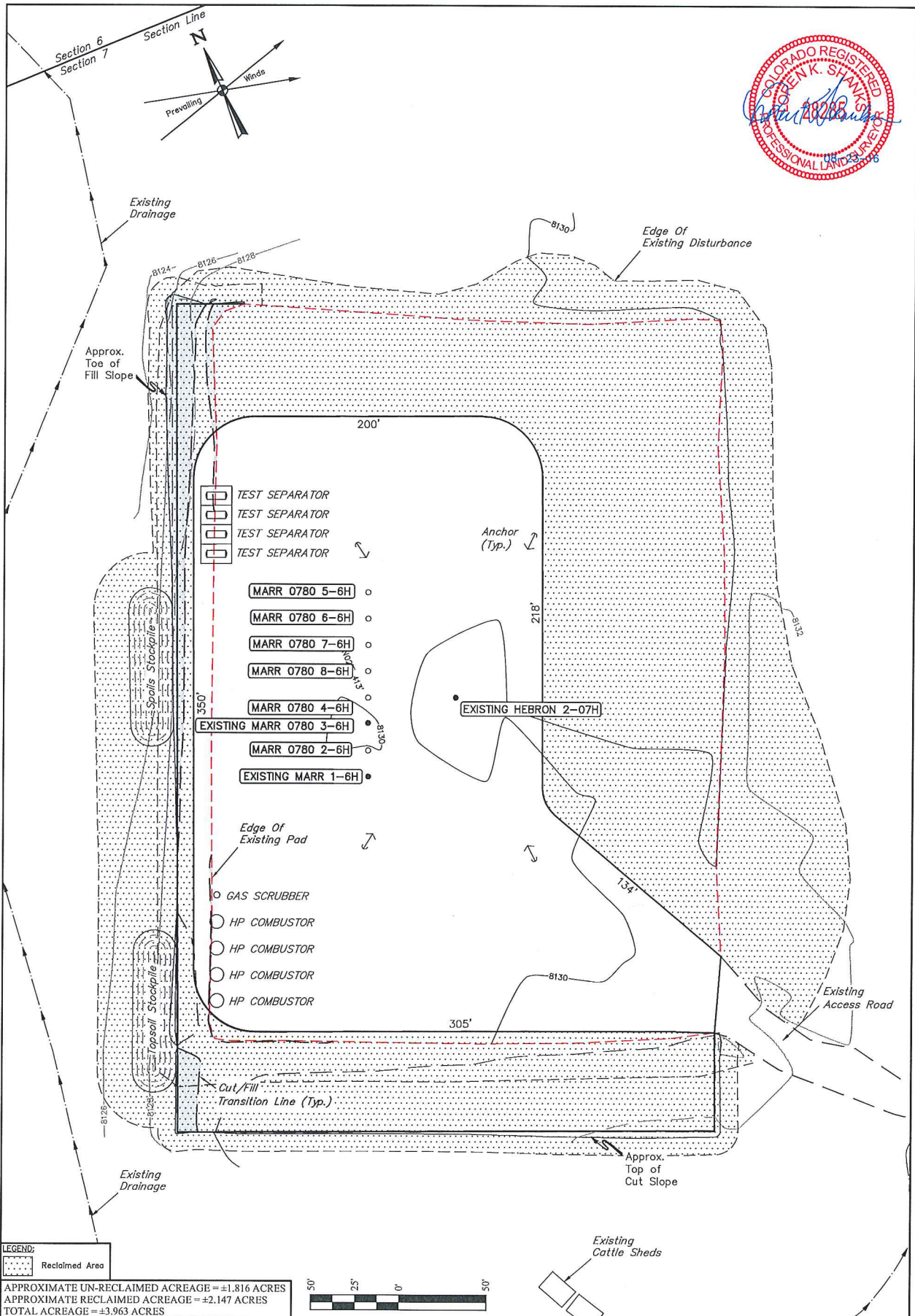
SandRidge Exploration & Production, LLC

HEBRON / MARR 7 PAD
NW 1/4 NE 1/4, SECTION 7, T7N, R80W, 6th P.M.
JACKSON COUNTY, COLORADO



UELS, LLC
Corporate Office * 85 South 200 East
Vernal, UT 84078 * (435) 789-1017

SURVEYED BY	DARREN SHANKS	08-17-16	SCALE
DRAWN BY	C.D.L.	08-18-16	AS SHOWN
CONSTRUCTION LAYOUT CROSS SECTIONS FIGURE #2			



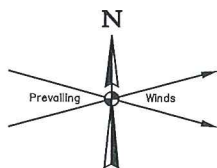
SandRidge Exploration & Production, LLC

HEBRON / MARR 7 PAD
NW 1/4 NE 1/4, SECTION 7, T7N, R80W, 6th P.M.
JACKSON COUNTY, COLORADO

SURVEYED BY	DARREN SHANKS	08-17-16	SCALE
DRAWN BY	C.D.L.	08-18-16	1" = 50'
INTERIM RECLAMATION PLAN		FIGURE #4	



UELS, LLC
Corporate Office * 85 South 200 East
Vernal, UT 84078 * (435) 789-1017



Sec. 6



Section 6
Section 7

GRIZZLY
LAND LLC.

GRIZZLY
LAND LLC.

1/16 Section Line

Sec. 7

LINE TABLE		
LINE	DIRECTION	LENGTH
L1	N44°W	40'
L2	N44°W	209'
L3	S03°W	301'
L4	S24°W	77'
L5	N03°E	399'
L6	N01°W	595'



SandRidge Exploration & Production, LLC

HEBRON / MARR 7 PAD
NW 1/4 NE 1/4, SECTION 7, T7N, R80W, 6th P.M.
JACKSON COUNTY, COLORADO

SURVEYED BY	DARREN SHANKS	08-17-16	SCALE
DRAWN BY	C.D.L.	08-18-16	1" = 200'
LOCATION DRAWING		FIGURE #5	



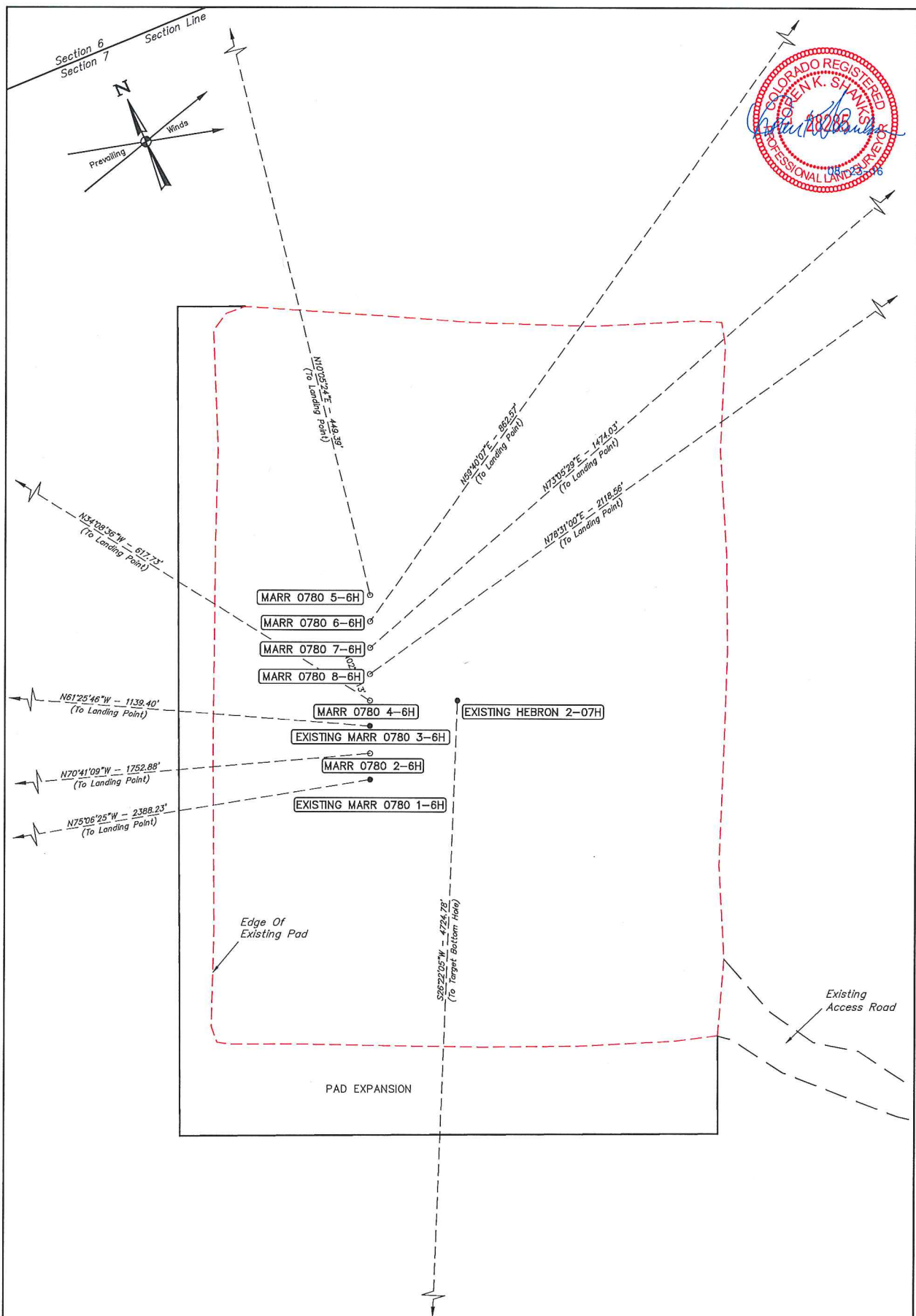
UELS, LLC
Corporate Office * 85 South 200 East
Vernal, UT 84078 * (435) 789-1017

SandRidge Exploration & Production, LLC

HEBRON / MARR 7 PAD
SECTION 7, T7N, R80W, 6th P.M.
DATE: 04-28-14
REV: 3 C.D.L. 08-18-16 (UPDATE WELL STATUS)

DISTANCES FROM WELL HEAD																
WELL NAME	BUILDING		BUILDING UNIT		HIGH OCCU. BUILDING		D.O.A.A.		PUBLIC ROAD		ABOVE GROUND UTILITY		RAILROAD		PROPERTY LINE	
	DIRECTION	LENGTH	DIRECTION	LENGTH	DIRECTION	LENGTH	DIRECTION	LENGTH	DIRECTION	LENGTH	DIRECTION	LENGTH	DIRECTION	LENGTH	DIRECTION	LENGTH
HEBRON 02-07H (AS-DRILLED)	N42°W	2246'	S70°E	2190'	OVER 1 MILE		OVER 1 MILE		S32°E	1608'	S73°E	2221'	OVER 1 MILE		N02°E	420'
MARR 0780 5-6H	N43°W	2176'	S68°E	2237'	OVER 1 MILE		OVER 1 MILE		S31°E	1683'	S71°E	2264'	OVER 1 MILE		N02°E	345'
MARR 0780 6-6H	N43°W	2182'	S69°E	2237'	OVER 1 MILE		OVER 1 MILE		S32°E	1675'	S72°E	2266'	OVER 1 MILE		N02°E	359'
MARR 0780 7-6H	N42°W	2188'	S69°E	2238'	OVER 1 MILE		OVER 1 MILE		S32°E	1666'	S72°E	2267'	OVER 1 MILE		N02°E	372'
MARR 0780 8-6H	N42°W	2194'	S70°E	2239'	OVER 1 MILE		OVER 1 MILE		S33°E	1658'	S72°E	2269'	OVER 1 MILE		N02°E	386'
MARR 0780 4-6H	N41°W	2200'	S70°E	2240'	OVER 1 MILE		OVER 1 MILE		S33°E	1650'	S73°E	2271'	OVER 1 MILE		N02°E	400'
MARR 0780 3-6H (AS-DRILLED)	N41°W	2207'	S70°E	2241'	OVER 1 MILE		OVER 1 MILE		S33°E	1642'	S73°E	2272'	OVER 1 MILE		N02°E	413'
MARR 0780 2-6H	N41°W	2213'	S71°E	2242'	OVER 1 MILE		OVER 1 MILE		S34°E	1634'	S74°E	2274'	OVER 1 MILE		N02°E	428'
MARR 0780 1-6H (AS-DRILLED)	N40°W	2219'	S71°E	2243'	OVER 1 MILE		OVER 1 MILE		S34°E	1626'	S74°E	2276'	OVER 1 MILE		N02°E	442'

DISTANCES FROM PRODUCTION EQUIPMENT																
PRODUCTION FEATURE	BUILDING		BUILDING UNIT		HIGH OCCU. BUILDING		D.O.A.A.		PUBLIC ROAD		ABOVE GROUND UTILITY		RAILROAD		PROPERTY LINE	
	DIRECTION	LENGTH	DIRECTION	LENGTH	DIRECTION	LENGTH	DIRECTION	LENGTH	DIRECTION	LENGTH	DIRECTION	LENGTH	DIRECTION	LENGTH	DIRECTION	LENGTH
PRODUCTION EQUIPMENT	N46°W	2165'	S67°E	2056'	OVER 1 MILE		OVER 1 MILE		S32°E	1481'	S70°E	2079'	OVER 1 MILE		N02°E	254'



NOTES:

SandRidge Exploration & Production, LLC

HEBRON / MARR 7 PAD
NW 1/4 NE 1/4, SECTION 7, T7N, R80W, 6th P.M.
JACKSON COUNTY, COLORADO

SURVEYED BY	DARREN SHANKS	08-17-16	SCALE
DRAWN BY	C.D.L.	08-18-16	1" = 50'
MULTI-Well PLAN		FIGURE #6	



UELS, LLC
Corporate Office * 85 South 200 East
Vernal, UT 84078 * (435) 789-1017