



WHITING PETROLEUM CORP.

Project: Weld County, CO
Site: Sec 8-T10N-R57W
Well: Horsetail #08C-1708
Wellbore: Original Hole
Design: Original Hole



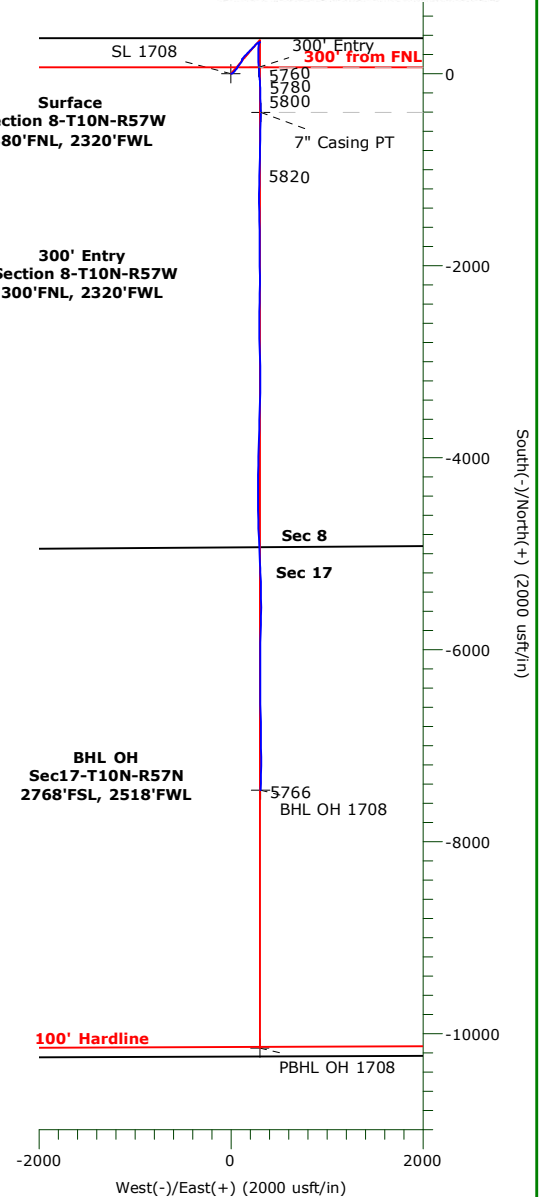
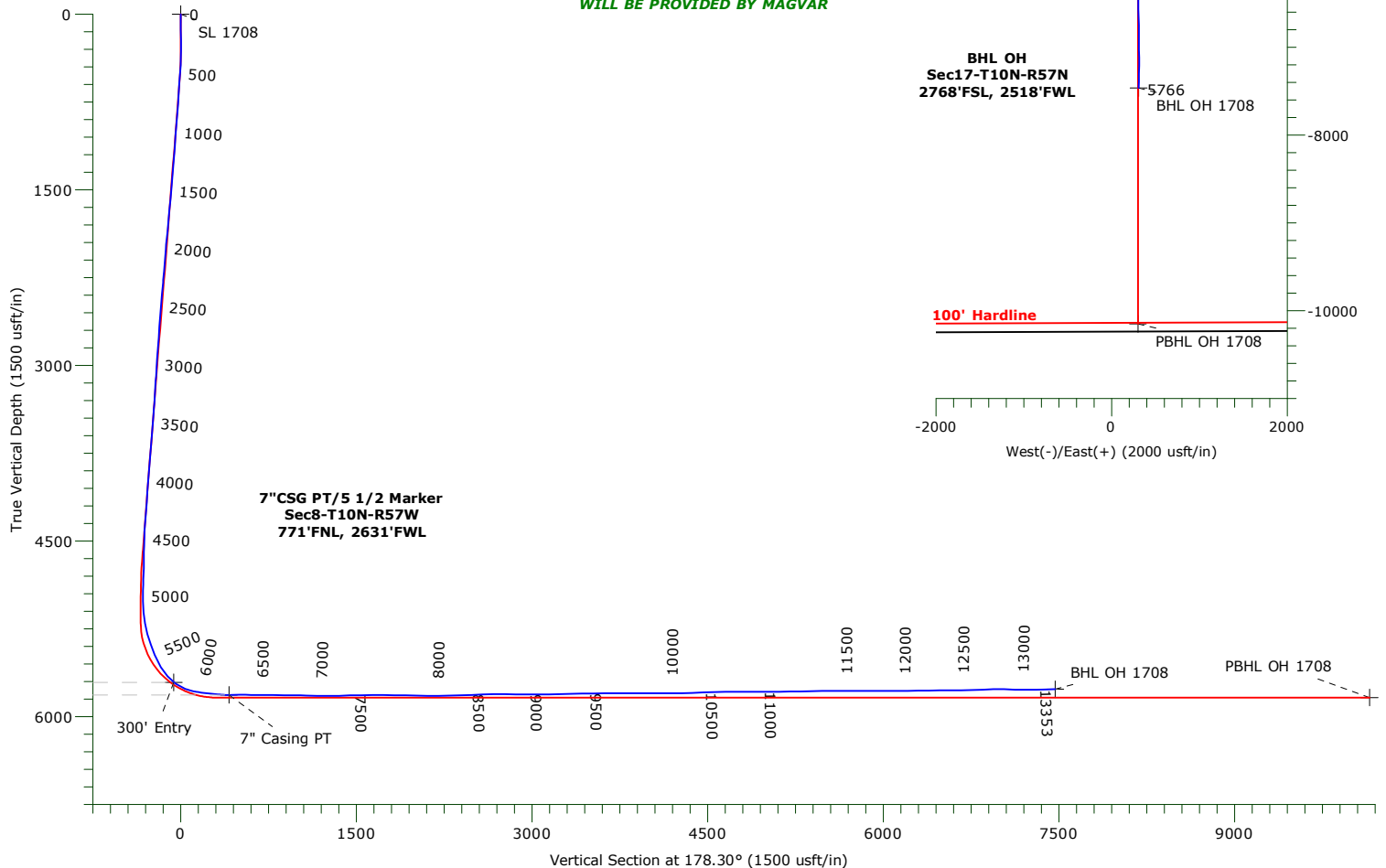
LEGEND

- Horsetail #08C-1708, Original Hole, Plan #1a V0
- Original Hole

ANNOTATIONS

TVD	MD	+N/-S	+E/-W	Annotation
5708.34	5800.00	67.31	289.04	300' Entry
5814.60	6290.00	-402.14	310.177	Casing PT

MWD CORRECTION
WILL BE PROVIDED BY MAGVAR



WELLBORE TARGET DETAILS

Name	TVD	+N/-S	+E/-W	Northing	Easting	Latitude	Longitude	Shape
SL 1708	0.00	0.00	0.00	1560699.44	3476580.88	40° 51' 35.230 N	103° 46' 37.300 W	Point
300' Entry 1708	5708.34	67.31	289.04	1560772.35	3476868.56	40° 51' 35.895 N	103° 46' 33.538 W	Point
BHL OH 1708	5766.31	-7462.33	308.97	1553244.52	3477034.78	40° 50' 21.496 N	103° 46' 33.280 W	Point
7\" Casing PT 1708	5814.60	-402.14	310.17	1560303.40	3476898.81	40° 51' 31.256 N	103° 46' 33.263 W	Point
PBHL OH 1708	5837.00	-10148.97	300.57	1550558.22	3477078.58	40° 49' 54.950 N	103° 46' 33.390 W	Point

WHITING PETROLEUM CORP.

Weld County, CO

Sec 8-T10N-R57W

Horsetail #08C-1708

Original Hole

Design: Original Hole

Standard Survey Report

19 May, 2016

Precision Drilling Corporation

Survey Report

Company:	WHITING PETROLEUM CORP.	Local Co-ordinate Reference:	Well Horsetail #08C-1708
Project:	Weld County, CO	TVD Reference:	4912.5'GL+21'KB @ 4933.5usft (Unit 409)
Site:	Sec 8-T10N-R57W	MD Reference:	4912.5'GL+21'KB @ 4933.5usft (Unit 409)
Well:	Horsetail #08C-1708	North Reference:	True
Wellbore:	Original Hole	Survey Calculation Method:	Minimum Curvature
Design:	Original Hole	Database:	COMPASS_ROCKIES

Project	Weld County, CO		
Map System:	US State Plane 1983	System Datum:	Mean Sea Level
Geo Datum:	North American Datum 1983		
Map Zone:	Colorado Northern Zone		

Site	Sec 8-T10N-R57W		
Site Position:		Northing:	1,561,022.64 usft
From:	Lat/Long	Easting:	3,474,249.13 usft
Position Uncertainty:	0.0 usft	Slot Radius:	13.20 in
		Latitude:	40° 51' 38.869 N
		Longitude:	103° 47' 7.559 W
		Grid Convergence:	1.11 °

Well	Horsetail #08C-1708		
Well Position	+N/-S	0.0 usft	Northing:
	+E/-W	0.0 usft	Easting:
Position Uncertainty	0.0 usft	Wellhead Elevation:	usft
		Latitude:	40° 51' 35.230 N
		Longitude:	103° 46' 37.300 W
		Ground Level:	4,912.5 usft

Wellbore	Original Hole				
Magnetics	Model Name	Sample Date	Declination (°)	Dip Angle (°)	Field Strength (nT)
	IGRF2010	2/10/2015	7.86	67.44	53,082

Design	Original Hole				
Audit Notes:					
Version:	1.0	Phase:	ACTUAL	Tie On Depth:	0.0
Vertical Section:	Depth From (TVD) (usft)	+N/-S (usft)	+E/-W (usft)	Direction (°)	
	0.0	0.0	0.0	178.30	

Survey Program	Date 5/19/2016				
From (usft)	To (usft)	Survey (Wellbore)	Tool Name	Description	
130.0	13,283.0	Survey #1 (Original Hole)	MWD+IFR1+MS	Fixed:v2:crustal dec & 3-axis correction	
13,353.0	13,353.0	Survey #2 (Original Hole)	BLIND	OWSG BLIND	

Survey										
Measured Depth (usft)	Inclination (°)	Azimuth (°)	Vertical Depth (usft)	+N/-S (usft)	+E/-W (usft)	Vertical Section (usft)	Dogleg Rate (°/100usft)	Build Rate (°/100usft)	Turn Rate (°/100usft)	
0.0	0.00	0.00	0.0	0.0	0.0	0.0	0.00	0.00	0.00	
130.0	0.71	125.76	130.0	-0.5	0.7	0.5	0.55	0.55	0.00	
222.0	1.15	139.10	222.0	-1.5	1.7	1.6	0.53	0.48	14.50	
313.0	2.23	78.66	312.9	-1.8	4.1	2.0	2.13	1.19	-66.42	
405.0	3.44	55.30	404.8	0.1	8.1	0.2	1.79	1.31	-25.39	
496.0	6.20	49.57	495.5	4.8	14.1	-4.4	3.08	3.04	-6.30	
588.0	6.32	48.72	587.0	11.4	21.7	-10.7	0.16	0.13	-0.93	
678.0	6.22	51.08	676.4	17.7	29.2	-16.8	0.30	-0.10	2.61	
769.0	6.22	40.24	766.9	24.6	36.2	-23.5	1.29	-0.01	-11.91	
860.0	5.74	37.69	857.4	31.9	42.2	-30.7	0.60	-0.53	-2.80	

Precision Drilling Corporation

Survey Report

Company:	WHITING PETROLEUM CORP.	Local Co-ordinate Reference:	Well Horsetail #08C-1708
Project:	Weld County, CO	TVD Reference:	4912.5'GL+21'KB @ 4933.5usft (Unit 409)
Site:	Sec 8-T10N-R57W	MD Reference:	4912.5'GL+21'KB @ 4933.5usft (Unit 409)
Well:	Horsetail #08C-1708	North Reference:	True
Wellbore:	Original Hole	Survey Calculation Method:	Minimum Curvature
Design:	Original Hole	Database:	COMPASS_ROCKIES

Survey

Measured Depth (usft)	Inclination (°)	Azimuth (°)	Vertical Depth (usft)	+N/-S (usft)	+E/-W (usft)	Vertical Section (usft)	Dogleg Rate (°/100usft)	Build Rate (°/100usft)	Turn Rate (°/100usft)
951.0	5.26	38.72	948.0	38.8	47.6	-37.4	0.53	-0.52	1.13
1,042.0	5.12	38.36	1,038.6	45.2	52.7	-43.7	0.17	-0.16	-0.39
1,134.0	5.15	42.29	1,130.2	51.5	58.0	-49.8	0.38	0.03	4.27
1,226.0	5.98	31.82	1,221.8	58.6	63.3	-56.7	1.43	0.91	-11.38
1,317.0	5.83	34.94	1,312.3	66.5	68.5	-64.4	0.39	-0.17	3.43
1,409.0	6.06	34.89	1,403.8	74.3	73.9	-72.0	0.25	0.25	-0.06
1,500.0	6.30	36.65	1,494.3	82.2	79.6	-79.8	0.34	0.27	1.93
1,591.0	6.54	39.05	1,584.7	90.2	85.9	-87.7	0.40	0.26	2.64
1,683.0	7.57	37.82	1,676.0	99.1	92.9	-96.3	1.13	1.12	-1.33
1,774.0	6.85	35.90	1,766.3	108.2	99.8	-105.2	0.83	-0.79	-2.12
1,866.0	6.05	29.77	1,857.7	116.9	105.4	-113.7	1.14	-0.87	-6.66
1,975.0	5.64	23.13	1,966.2	126.8	110.3	-123.5	0.73	-0.38	-6.10
2,022.0	5.35	22.55	2,012.9	131.0	112.1	-127.6	0.63	-0.62	-1.22
2,116.0	4.99	17.88	2,106.6	138.9	115.0	-135.4	0.59	-0.38	-4.97
2,210.0	4.75	11.30	2,200.2	146.6	117.0	-143.1	0.65	-0.25	-7.00
2,305.0	6.45	38.62	2,294.8	154.6	121.1	-151.0	3.28	1.79	28.76
2,399.0	6.01	33.25	2,388.2	162.9	127.1	-159.0	0.78	-0.47	-5.71
2,494.0	5.85	32.49	2,482.7	171.1	132.5	-167.1	0.19	-0.17	-0.81
2,588.0	6.71	47.25	2,576.2	178.9	139.1	-174.7	1.93	0.91	15.70
2,681.0	6.43	44.29	2,668.5	186.3	146.7	-181.9	0.47	-0.30	-3.18
2,775.0	5.90	43.80	2,762.0	193.6	153.7	-188.9	0.56	-0.56	-0.52
2,870.0	5.51	44.65	2,856.5	200.3	160.3	-195.5	0.42	-0.41	0.89
2,965.0	5.12	38.07	2,951.1	206.9	166.1	-201.9	0.76	-0.40	-6.92
3,059.0	4.76	40.61	3,044.8	213.2	171.3	-208.0	0.45	-0.38	2.70
3,153.0	6.16	48.48	3,138.3	219.5	177.6	-214.1	1.68	1.49	8.37
3,248.0	5.32	45.11	3,232.9	226.0	184.5	-220.4	0.95	-0.89	-3.55
3,342.0	5.23	42.76	3,326.5	232.2	190.5	-226.4	0.25	-0.10	-2.49
3,436.0	7.01	44.92	3,419.9	239.4	197.5	-233.4	1.91	1.90	2.30
3,530.0	6.34	44.58	3,513.3	247.1	205.1	-241.0	0.71	-0.71	-0.37
3,625.0	6.73	43.32	3,607.7	254.9	212.7	-248.5	0.44	0.41	-1.33
3,719.0	6.32	45.43	3,701.1	262.6	220.1	-255.9	0.51	-0.44	2.25
3,814.0	6.53	43.41	3,795.5	270.2	227.6	-263.3	0.33	0.22	-2.13
3,908.0	6.49	44.74	3,888.9	277.8	235.0	-270.7	0.17	-0.05	1.42
4,002.0	6.03	44.56	3,982.3	285.1	242.2	-277.8	0.49	-0.49	-0.19
4,097.0	5.85	45.92	4,076.8	292.0	249.1	-284.5	0.23	-0.18	1.44
4,191.0	5.86	46.01	4,170.3	298.7	256.0	-291.0	0.01	0.00	0.10
4,286.0	6.72	44.43	4,264.7	306.0	263.4	-298.1	0.93	0.91	-1.67
4,380.0	6.06	44.85	4,358.1	313.5	270.8	-305.3	0.71	-0.71	0.45
4,475.0	4.64	63.18	4,452.7	318.8	277.7	-310.4	2.32	-1.49	19.30
4,569.0	4.74	74.39	4,546.4	321.5	284.9	-312.9	0.98	0.10	11.92
4,663.0	3.58	88.33	4,640.2	322.7	291.5	-313.9	1.63	-1.23	14.84
4,757.0	3.19	67.00	4,734.0	323.8	296.9	-314.8	1.39	-0.41	-22.70
4,851.0	3.14	23.40	4,827.9	327.1	300.3	-318.1	2.50	-0.06	-46.38

Precision Drilling Corporation

Survey Report

Company:	WHITING PETROLEUM CORP.	Local Co-ordinate Reference:	Well Horsetail #08C-1708
Project:	Weld County, CO	TVD Reference:	4912.5'GL+21'KB @ 4933.5usft (Unit 409)
Site:	Sec 8-T10N-R57W	MD Reference:	4912.5'GL+21'KB @ 4933.5usft (Unit 409)
Well:	Horsetail #08C-1708	North Reference:	True
Wellbore:	Original Hole	Survey Calculation Method:	Minimum Curvature
Design:	Original Hole	Database:	COMPASS_ROCKIES

Survey

Measured Depth (usft)	Inclination (°)	Azimuth (°)	Vertical Depth (usft)	+N/-S (usft)	+E/-W (usft)	Vertical Section (usft)	Dogleg Rate (°/100usft)	Build Rate (°/100usft)	Turn Rate (°/100usft)
4,945.0	2.02	4.24	4,921.8	331.2	301.4	-322.1	1.49	-1.19	-20.39
5,039.0	1.82	217.10	5,015.8	331.6	300.7	-322.6	3.91	-0.21	-156.52
5,134.0	5.94	215.50	5,110.5	326.4	296.9	-317.5	4.34	4.34	-1.68
5,228.0	9.95	194.34	5,203.6	314.6	292.1	-305.8	5.21	4.27	-22.52
5,322.0	15.88	185.97	5,295.2	293.9	288.7	-285.2	6.60	6.31	-8.90
5,417.0	20.24	184.60	5,385.5	264.6	286.0	-256.0	4.61	4.59	-1.44
5,511.0	23.04	179.37	5,472.9	229.9	284.9	-221.4	3.62	2.98	-5.57
5,629.0	30.81	179.95	5,578.0	176.6	285.2	-168.0	6.58	6.58	0.49
5,724.0	40.16	178.23	5,655.3	121.5	286.2	-112.9	9.91	9.85	-1.80
5,818.0	53.73	175.52	5,719.3	53.1	290.1	-44.5	14.58	14.43	-2.89
5,912.0	70.15	174.71	5,763.4	-29.3	297.2	38.1	17.49	17.47	-0.86
6,007.0	80.35	177.72	5,787.5	-120.8	303.2	129.8	11.16	10.73	3.17
6,101.0	83.39	179.05	5,800.8	-213.8	305.8	222.8	3.52	3.23	1.42
6,196.0	84.73	178.03	5,810.7	-308.3	308.2	317.3	1.77	1.41	-1.08
6,290.0	90.47	179.59	5,814.6	-402.1	310.2	411.2	6.33	6.11	1.65
6,384.0	90.39	180.90	5,813.9	-496.1	309.8	505.1	1.40	-0.08	1.39
6,479.0	89.29	181.40	5,814.2	-591.1	307.9	600.0	1.27	-1.16	0.53
6,573.0	90.16	181.51	5,814.6	-685.1	305.5	693.8	0.93	0.92	0.11
6,668.0	88.69	181.52	5,815.6	-780.0	303.0	788.7	1.55	-1.55	0.01
6,762.0	88.90	181.19	5,817.6	-874.0	300.8	882.5	0.41	0.22	-0.35
6,856.0	89.76	180.68	5,818.7	-968.0	299.2	976.4	1.07	0.92	-0.54
6,951.0	88.15	181.56	5,820.4	-1,062.9	297.4	1,071.3	1.93	-1.69	0.93
7,045.0	88.52	181.96	5,823.1	-1,156.9	294.5	1,165.1	0.58	0.39	0.42
7,139.0	90.50	180.16	5,823.9	-1,250.8	292.8	1,259.0	2.85	2.11	-1.91
7,233.0	91.31	178.86	5,822.4	-1,344.8	293.6	1,352.9	1.63	0.87	-1.38
7,328.0	91.97	178.59	5,819.7	-1,439.7	295.7	1,447.9	0.75	0.69	-0.29
7,422.0	90.38	179.24	5,817.8	-1,533.7	297.5	1,541.9	1.83	-1.69	0.70
7,517.0	90.66	179.14	5,816.9	-1,628.7	298.8	1,636.8	0.31	0.29	-0.10
7,611.0	89.38	180.07	5,816.9	-1,722.7	299.4	1,730.8	1.68	-1.36	0.99
7,705.0	89.93	179.72	5,817.5	-1,816.7	299.6	1,824.8	0.69	0.58	-0.37
7,799.0	88.45	180.01	5,818.8	-1,910.7	299.8	1,918.7	1.60	-1.57	0.31
7,894.0	88.77	180.00	5,821.1	-2,005.6	299.8	2,013.7	0.33	0.33	-0.01
7,988.0	88.80	179.53	5,823.1	-2,099.6	300.2	2,107.6	0.50	0.03	-0.50
8,083.0	91.30	180.42	5,823.0	-2,194.6	300.2	2,202.6	2.79	2.63	0.93
8,177.0	92.31	180.21	5,820.1	-2,288.6	299.7	2,296.4	1.09	1.07	-0.22
8,271.0	91.28	180.81	5,817.1	-2,382.5	298.9	2,390.3	1.26	-1.09	0.63
8,366.0	91.03	180.59	5,815.2	-2,477.5	297.7	2,485.2	0.35	-0.27	-0.23
8,460.0	92.33	180.61	5,812.4	-2,571.4	296.7	2,579.1	1.38	1.38	0.02
8,555.0	91.36	179.83	5,809.4	-2,666.4	296.4	2,674.0	1.31	-1.02	-0.82
8,649.0	89.25	178.71	5,808.9	-2,760.4	297.6	2,768.0	2.54	-2.25	-1.18
8,743.0	89.60	178.62	5,809.8	-2,854.3	299.8	2,862.0	0.39	0.38	-0.10
8,837.0	89.69	178.34	5,810.4	-2,948.3	302.3	2,956.0	0.31	0.10	-0.30
8,931.0	89.83	177.72	5,810.8	-3,042.2	305.5	3,050.0	0.68	0.14	-0.67

Precision Drilling Corporation

Survey Report

Company:	WHITING PETROLEUM CORP.	Local Co-ordinate Reference:	Well Horsetail #08C-1708
Project:	Weld County, CO	TVD Reference:	4912.5'GL+21'KB @ 4933.5usft (Unit 409)
Site:	Sec 8-T10N-R57W	MD Reference:	4912.5'GL+21'KB @ 4933.5usft (Unit 409)
Well:	Horsetail #08C-1708	North Reference:	True
Wellbore:	Original Hole	Survey Calculation Method:	Minimum Curvature
Design:	Original Hole	Database:	COMPASS_ROCKIES

Survey

Measured Depth (usft)	Inclination (°)	Azimuth (°)	Vertical Depth (usft)	+N/-S (usft)	+E/-W (usft)	Vertical Section (usft)	Dogleg Rate (°/100usft)	Build Rate (°/100usft)	Turn Rate (°/100usft)
9,026.0	90.50	180.24	5,810.5	-3,137.2	307.2	3,145.0	2.75	0.71	2.65
9,120.0	91.86	180.48	5,808.6	-3,231.2	306.6	3,238.9	1.47	1.45	0.26
9,215.0	90.77	181.61	5,806.4	-3,326.2	304.9	3,333.7	1.65	-1.15	1.19
9,308.0	91.05	182.04	5,804.9	-3,419.1	301.9	3,426.5	0.55	0.30	0.46
9,403.0	91.45	181.27	5,802.8	-3,514.0	299.2	3,521.4	0.91	0.42	-0.81
9,497.0	90.22	181.65	5,801.5	-3,608.0	296.8	3,615.2	1.37	-1.31	0.40
9,592.0	91.00	181.24	5,800.5	-3,703.0	294.4	3,710.1	0.92	0.82	-0.43
9,686.0	89.56	181.36	5,800.0	-3,796.9	292.3	3,803.9	1.53	-1.53	0.12
9,781.0	90.24	181.41	5,800.2	-3,891.9	290.0	3,898.8	0.72	0.72	0.06
9,875.0	90.70	181.57	5,799.4	-3,985.9	287.5	3,992.6	0.52	0.49	0.17
9,970.0	89.29	181.80	5,799.4	-4,080.8	284.7	4,087.5	1.51	-1.49	0.24
10,064.0	89.85	181.82	5,800.1	-4,174.8	281.8	4,181.3	0.60	0.60	0.03
10,158.0	90.49	179.87	5,799.8	-4,268.8	280.4	4,275.2	2.19	0.67	-2.08
10,252.0	91.54	179.61	5,798.2	-4,362.7	280.8	4,369.1	1.15	1.12	-0.27
10,347.0	93.03	179.41	5,794.4	-4,457.7	281.6	4,464.0	1.58	1.57	-0.21
10,441.0	90.64	179.17	5,791.4	-4,551.6	282.8	4,558.0	2.56	-2.54	-0.26
10,536.0	91.34	178.86	5,789.7	-4,646.6	284.4	4,653.0	0.80	0.73	-0.33
10,630.0	89.75	177.78	5,788.8	-4,740.5	287.2	4,746.9	2.03	-1.68	-1.15
10,722.0	89.58	177.86	5,789.4	-4,832.4	290.7	4,838.9	0.21	-0.19	0.09
10,813.0	90.24	177.32	5,789.5	-4,923.4	294.5	4,929.9	0.93	0.72	-0.60
10,904.0	90.51	177.47	5,788.9	-5,014.3	298.6	5,020.9	0.35	0.30	0.17
10,996.0	90.60	177.12	5,788.0	-5,106.2	303.0	5,112.9	0.40	0.10	-0.39
11,087.0	90.88	178.19	5,786.8	-5,197.1	306.7	5,203.9	1.22	0.30	1.18
11,179.0	91.56	177.54	5,784.9	-5,289.0	310.1	5,295.9	1.03	0.74	-0.71
11,269.0	91.21	178.92	5,782.7	-5,378.9	312.9	5,385.8	1.58	-0.39	1.53
11,360.0	89.77	179.92	5,781.9	-5,469.9	313.8	5,476.8	1.93	-1.58	1.11
11,451.0	90.45	179.70	5,781.8	-5,560.9	314.1	5,567.8	0.79	0.75	-0.25
11,542.0	89.43	180.81	5,781.9	-5,651.9	313.7	5,658.7	1.66	-1.12	1.22
11,633.0	89.82	181.59	5,782.4	-5,742.9	311.8	5,749.6	0.95	0.42	0.85
11,725.0	90.41	181.58	5,782.3	-5,834.8	309.3	5,841.4	0.64	0.64	0.00
11,817.0	91.20	181.28	5,781.0	-5,926.8	307.0	5,933.3	0.92	0.86	-0.32
11,908.0	89.86	180.62	5,780.1	-6,017.8	305.5	6,024.2	1.64	-1.48	-0.73
12,000.0	89.76	180.31	5,780.4	-6,109.8	304.7	6,116.1	0.36	-0.11	-0.35
12,092.0	90.34	180.22	5,780.4	-6,201.8	304.3	6,208.1	0.64	0.63	-0.10
12,183.0	91.16	180.12	5,779.2	-6,292.8	304.0	6,299.0	0.90	0.90	-0.11
12,274.0	91.75	179.68	5,776.9	-6,383.7	304.2	6,390.0	0.81	0.65	-0.48
12,365.0	90.24	179.09	5,775.3	-6,474.7	305.2	6,480.9	1.79	-1.67	-0.65
12,457.0	89.89	178.99	5,775.2	-6,566.7	306.7	6,572.9	0.39	-0.38	-0.11
12,549.0	89.67	178.27	5,775.5	-6,658.7	308.9	6,664.9	0.82	-0.24	-0.78
12,641.0	91.73	178.91	5,774.4	-6,750.6	311.2	6,756.9	2.35	2.25	0.69
12,733.0	92.79	179.92	5,770.8	-6,842.6	312.1	6,848.8	1.59	1.15	1.10
12,824.0	91.36	179.68	5,767.5	-6,933.5	312.4	6,939.7	1.59	-1.57	-0.26
12,916.0	88.80	179.30	5,767.4	-7,025.5	313.2	7,031.7	2.81	-2.78	-0.42
13,008.0	89.08	178.96	5,769.1	-7,117.5	314.6	7,123.7	0.48	0.30	-0.37

Precision Drilling Corporation

Survey Report

Company:	WHITING PETROLEUM CORP.	Local Co-ordinate Reference:	Well Horsetail #08C-1708
Project:	Weld County, CO	TVD Reference:	4912.5'GL+21'KB @ 4933.5usft (Unit 409)
Site:	Sec 8-T10N-R57W	MD Reference:	4912.5'GL+21'KB @ 4933.5usft (Unit 409)
Well:	Horsetail #08C-1708	North Reference:	True
Wellbore:	Original Hole	Survey Calculation Method:	Minimum Curvature
Design:	Original Hole	Database:	COMPASS_ROCKIES

Survey

Measured Depth (usft)	Inclination (°)	Azimuth (°)	Vertical Depth (usft)	+N/-S (usft)	+E/-W (usft)	Vertical Section (usft)	Dogleg Rate (°/100usft)	Build Rate (°/100usft)	Turn Rate (°/100usft)
13,100.0	89.50	181.02	5,770.2	-7,209.4	314.7	7,215.6	2.29	0.46	2.24
13,192.0	90.52	181.37	5,770.2	-7,301.4	312.8	7,307.5	1.17	1.11	0.38
13,283.0	91.71	181.34	5,768.4	-7,392.4	310.6	7,398.3	1.30	1.30	-0.03
13,353.0	91.71	181.34	5,766.3	-7,462.3	309.0	7,468.2	0.00	0.00	0.00

Design Targets

Target Name	Dip Angle (°)	Dip Dir. (°)	TVD (usft)	+N/-S (usft)	+E/-W (usft)	Northing (usft)	Easting (usft)	Latitude	Longitude
- hit/miss target									
- Shape									
SL 1708	0.00	0.00	0.0	0.0	0.0	1,560,699.44	3,476,580.88	40° 51' 35.230 N	103° 46' 37.300 W
- actual wellpath hits target center									
- Point									
300' Entry 1708	0.00	0.00	5,708.3	67.3	289.0	1,560,772.35	3,476,868.56	40° 51' 35.895 N	103° 46' 33.538 W
- actual wellpath hits target center									
- Point									
BHL OH 1708	0.00	0.00	5,766.3	-7,462.3	309.0	1,553,244.52	3,477,034.78	40° 50' 21.496 N	103° 46' 33.280 W
- actual wellpath hits target center									
- Point									
7" Casing PT 1708	0.00	0.00	5,814.6	-402.1	310.2	1,560,303.40	3,476,898.81	40° 51' 31.256 N	103° 46' 33.263 W
- actual wellpath hits target center									
- Point									
PBHL OH 1708	0.00	0.00	5,837.0	-10,149.0	300.6	1,550,558.23	3,477,078.57	40° 49' 54.950 N	103° 46' 33.390 W
- actual wellpath misses target center by 2687.6usft at 13353.0usft MD (5766.3 TVD, -7462.3 N, 309.0 E)									
- Point									

Design Annotations

Measured Depth (usft)	Vertical Depth (usft)	Local Coordinates	Comment
+N/-S (usft)	+E/-W (usft)		
5,800.0	5,708.3	67.3	300' Entry
6,290.0	5,814.6	-402.1	7" Casing PT

Checked By: _____ Approved By: _____ Date: _____