

1 of 2

VEGETATION:
PASTURE

SURFACE USE:
GRAZING

PAD 360'X380' ELEV= 4921.1'

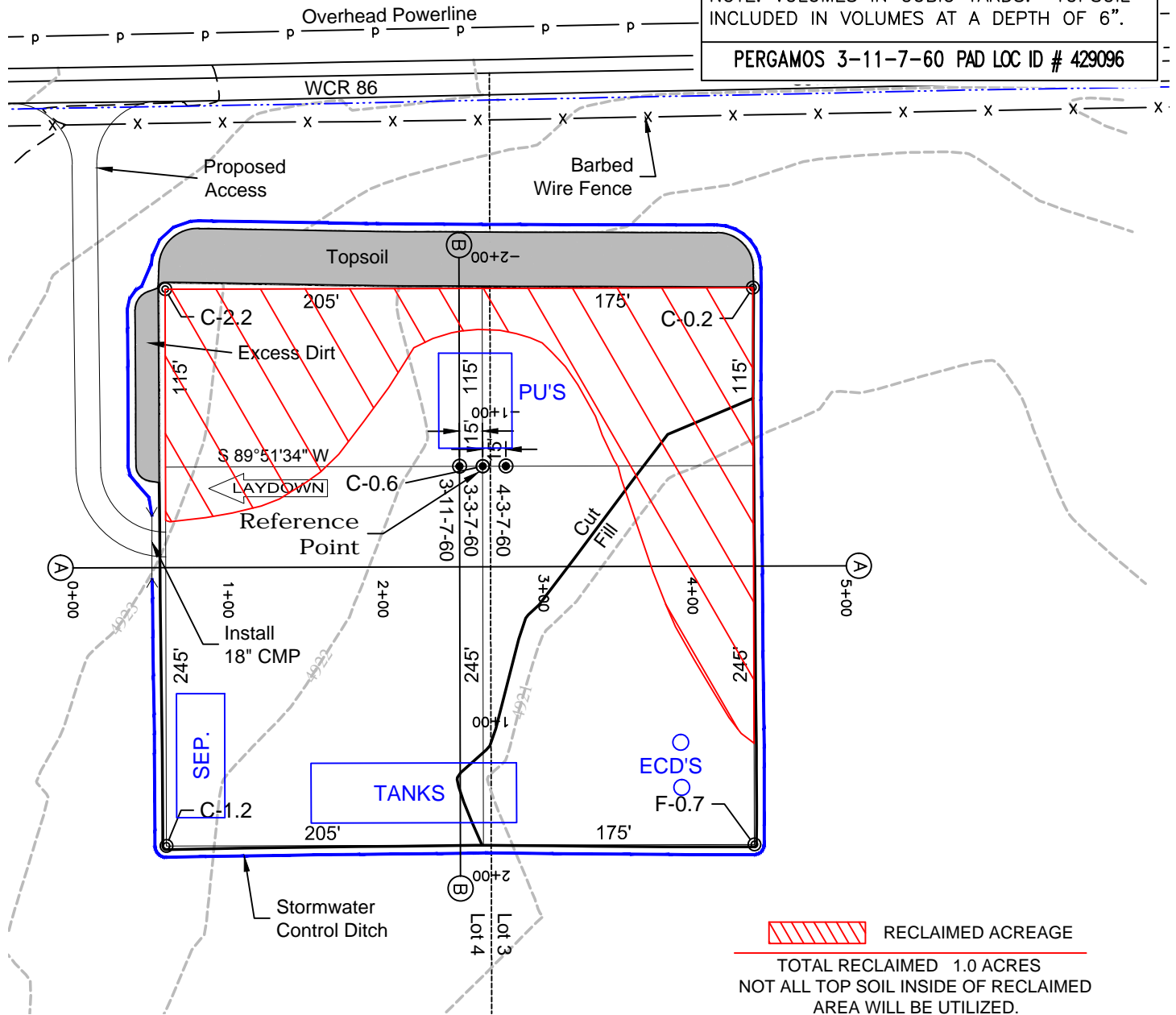
DISTURBED AREA=4.1± ACRES

ESTIMATED DIRT QUANTITIES

CUTx10%	FILL	TOPSOIL	EXCESS
3,480	520	2,650	310

NOTE: VOLUMES IN CUBIC YARDS. TOPSOIL INCLUDED IN VOLUMES AT A DEPTH OF 6".

PERGAMOS 3-11-7-60 PAD LOC ID # 429096



NOTE:

10% ALLOWANCE IS MADE FOR SOIL EXPANSION.

CARRIZO OIL & GAS, INC
PERGAMOS 3-11-7-60 PAD

**LOT 4 SECTION 3 T7N R60W
6th PM WELD COUNTY COLORADO**

7/11/16