

PLANT COMMUNITY	
<input type="checkbox"/> DISTURBED GRASSLAND	
<input type="checkbox"/> NATIVE GRASSLAND	
<input type="checkbox"/> SHRUB LAND	
<input type="checkbox"/> PLAINS RIPARIAN	
<input type="checkbox"/> MOUNTAIN RIPARIAN	
<input type="checkbox"/> FOREST LAND	
<input type="checkbox"/> WETLANDS AQUATIC	
<input type="checkbox"/> ALPINE	
<input type="checkbox"/> OTHER (Describe):	

CURRENT LAND USE					
CROP LAND:	<input type="checkbox"/> IRRIGATED	<input type="checkbox"/> DRY LAND	<input type="checkbox"/> IMPROVED PASTURE	<input type="checkbox"/> HAY MEADOW	<input type="checkbox"/> CRP
NON-CROP LAND:	<input type="checkbox"/> RANGELAND	<input type="checkbox"/> TIMBER	<input type="checkbox"/> RECREATIONAL	<input type="checkbox"/> OTHER (Describe)	
SUBDIVIDED:	<input type="checkbox"/> INDUSTRIAL	<input type="checkbox"/> COMMERCIAL	<input type="checkbox"/> RESIDENTIAL		

FUTURE LAND USE					
CROP LAND:	<input type="checkbox"/> IRRIGATED	<input type="checkbox"/> DRY LAND	<input type="checkbox"/> IMPROVED PASTURE	<input type="checkbox"/> HAY MEADOW	<input type="checkbox"/> CRP
NON-CROP LAND:	<input type="checkbox"/> RANGELAND	<input type="checkbox"/> TIMBER	<input type="checkbox"/> RECREATIONAL	<input type="checkbox"/> OTHER (Describe)	
SUBDIVIDED:	<input type="checkbox"/> INDUSTRIAL	<input type="checkbox"/> COMMERCIAL	<input type="checkbox"/> RESIDENTIAL		

SandRidge Exploration & Production, LLC

OPEN RANGE 18 PAD  
LOT 4, SECTION 18, T7N, R80W, 6th P.M.  
JACKSON COUNTY, COLORADO

SURVEYED BY	DARREN SHANKS, G.W.	06-10-16	SCALE
DRAWN BY	T.B.	06-16-16	1" = 200'
LOCATION DRAWING		FIGURE #5	



UELS, LLC  
Corporate Office \* 85 South 200 East  
Vernal, UT 84078 \* (435) 789-1017



SandRidge Exploration & Production, LLC

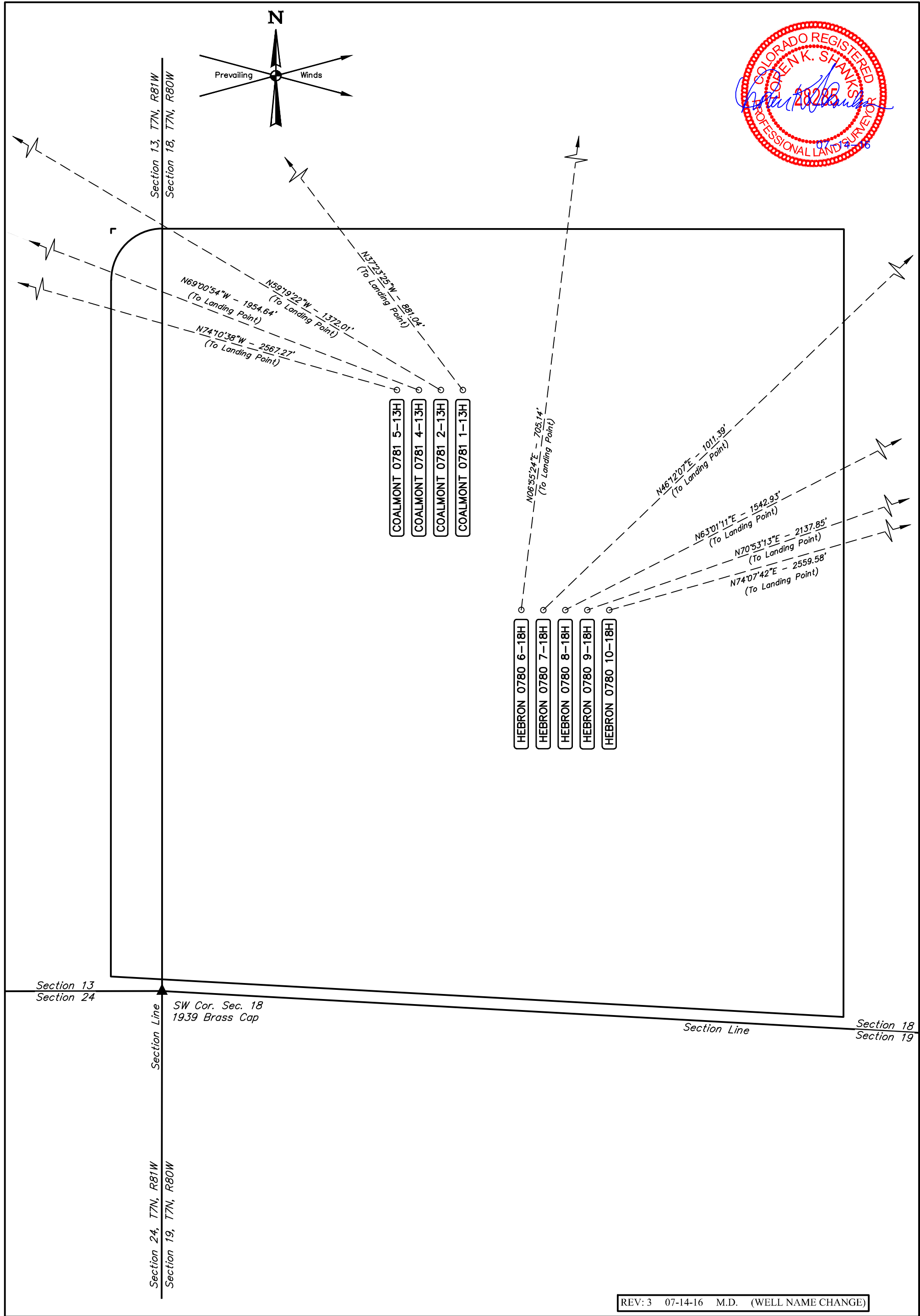
OPEN RANGE 18 PAD  
SECTION 18, T7N, R80W, 6th P.M.  
JACKSON COUNTY, COLORADO  
DATE: 06-30-16 J.J.  
REVISED: 07-14-16 M.D.

DISTANCES FROM WELLHEAD																
WELL NAME	BUILDING		BUILDING UNIT		HIGH OCCU. BUILDING		D.O.A.A.		PUBLIC ROAD		ABOVE GROUND UTILITY		RAILROAD		PROPERTY LINE	
	DIRECTION	LENGTH	DIRECTION	LENGTH	DIRECTION	LENGTH	DIRECTION	LENGTH	DIRECTION	LENGTH	DIRECTION	LENGTH	DIRECTION	LENGTH	DIRECTION	LENGTH
COALMONT 0781 5-13H	N84°E	4273'	N86°E	4187'	OVER 1 MILE		OVER 1 MILE		EAST	4865'	WEST	4698'	OVER 1 MILE		WEST	160'
COALMONT 0781 4-13H	N84°E	4258'	N86°E	4172'	OVER 1 MILE		OVER 1 MILE		EAST	4850'	WEST	4713'	OVER 1 MILE		WEST	175'
COALMONT 0781 2-13H	N84°E	4243'	N86°E	4157'	OVER 1 MILE		OVER 1 MILE		EAST	4835'	WEST	4728'	OVER 1 MILE		WEST	190'
COALMONT 0781 1-13H	N84°E	4228'	N86°E	4142'	OVER 1 MILE		OVER 1 MILE		EAST	4820'	WEST	4743'	OVER 1 MILE		WEST	205'
HEBRON 0780 6-18H	N82°E	4262'	N84°E	4114'	OVER 1 MILE		OVER 1 MILE		EAST	4781'	N88°W	4786'	OVER 1 MILE		WEST	245'
HEBRON 0780 7-18H	N82°E	4192'	N84°E	4100'	OVER 1 MILE		OVER 1 MILE		EAST	4766'	N88°W	4801'	OVER 1 MILE		WEST	260'
HEBRON 0780 8-18H	N82°E	4177'	N84°E	4085'	OVER 1 MILE		OVER 1 MILE		EAST	4751'	N88°W	4816'	OVER 1 MILE		S03°W	275'
HEBRON 0780 9-18H	N82°E	4163'	N84°E	4070'	OVER 1 MILE		OVER 1 MILE		EAST	4736'	N88°W	4831'	OVER 1 MILE		S03°W	276'
HEBRON 0780 10-18H	N82°E	4148'	N84°E	4055'	OVER 1 MILE		OVER 1 MILE		EAST	4721'	N88°W	4846'	OVER 1 MILE		S03°W	276'

DISTANCES FROM PRODUCTION AREA																
PRODUCTION FEATURE	BUILDING		BUILDING UNIT		HIGH OCCU. BUILDING		D.O.A.A.		PUBLIC ROAD		ABOVE GROUND UTILITY		RAILROAD		PROPERTY LINE	
	DIRECTION	LENGTH	DIRECTION	LENGTH	DIRECTION	LENGTH	DIRECTION	LENGTH	DIRECTION	LENGTH	DIRECTION	LENGTH	DIRECTION	LENGTH	DIRECTION	LENGTH
PRODUCTION AREA	N85°E	3597'	N88°E	3875'	OVER 1 MILE		OVER 1 MILE		EAST	4561'	WEST	4503'	OVER 1 MILE		EAST	35'







SandRidge Exploration & Production, LLC

OPEN RANGE 18 PAD  
LOT 4, SECTION 18, T7N, R80W, 6th P.M.  
JACKSON COUNTY, COLORADO

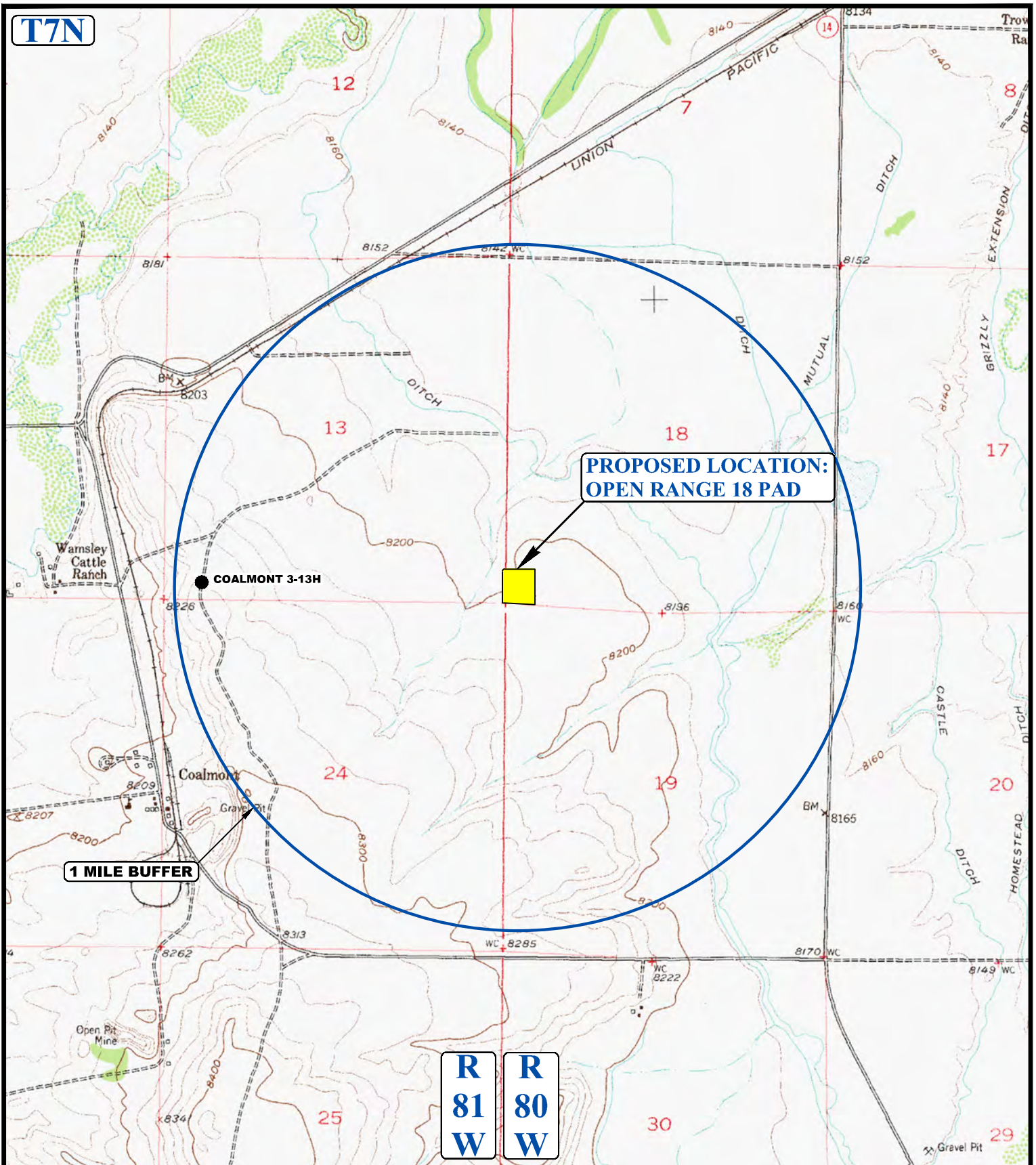
SURVEYED BY	DARREN SHANKS, G.W.	06-10-16	SCALE
DRAWN BY	T.B.	06-16-16	1" = 60'
BOTTOM HOLE DRAWING		FIGURE #6	



UELS, LLC  
Corporate Office \* 85 South 200 East  
Vernal, UT 84078 \* (435) 789-1017



**T7N**



**LEGEND:**

- DISPOSAL WELLS
- PRODUCING WELLS
- SHUT IN WELLS
- ABANDONED WELLS
- TEMPORARILY ABANDONED
- CONFIDENTIAL



**SandRidge Exploration & Production, LLC**

**OPEN RANGE 18 PAD**  
**LOT 4, SECTION 18, T7N, R80W, 6th P.M.**  
**JACKSON COUNTY, COLORADO**



**UELS, LLC**  
 Corporate Office \* 85 South 200 East  
 Vernal, UT 84078 \* (435) 789-1017

SURVEYED BY	D.S., G.W.	06-10-16	SCALE
DRAWN BY	C.D.L.	06-13-16	1 : 24,000
<b>WELL PROXIMITY MAP</b>			<b>TOPO C</b>