



Gamma Ray Natural Formation Evaluation

LWD Composite Log

Scale:	Company: Noble Energy					
1:1200 TVD	Well: Shadow A26-663					
	Field: Weld County (Noble NAD 83 Grid)					
Depth Reference:	Country:	Weld	State:	United States		
Driller's Depth						
Status:	Surface Location:		Other Services:			
Final Print	Latitude:	040° 27' 30.816" N				
API No: 05-123-42885-00	Longitude:	104° 28' 42.996" W				
Job ID: 7928851	SEC: 30	TMN: 6N	RGE: 63W			
Permanent Datum (P.D.): Ground Level	Elevation:	4650.00 ft		N/A		
Log Measured From: Rig Floor	Above P.D.	30.00 ft				
Dates	Interval Logged		Magnetic Field Reference			
Date From: 2016-06-12	Top: (ft) 1913.00	Azi Reference North: Grid	Dip Angle: (deg) 67.13			
Date To: 2016-06-16	Bottom: (ft) 6671.00	Total Magnetic Field Strength: (nT) 52526				
Spud Date: 2016-06-10		Mag to Reference North Correction: (deg) 7.46 E				
Borehole Record		Casing Record				
Hole Size (in)	From (ft)	To (ft)	Size (in)	Weight (lb/ft)	From (ft)	To (ft)
8.500	1928.00	17466.00	9.625	36.00	30.00	1918.00
Mud Record		Deviation Record				
Type	From (ft)	To (ft)	Hole Size (in)	Interval (ft)	Inc Az (Start)	Inc Az (End)
Oil Based Mud	1928.00	17466.00	8.500	15539.43	0.40 171.77	89.85 269.99
Acquisition System		Software Version		Other		
Baker Hughes Cadence	G3.2	Rig: H&P 524	Contractor: Helmerich & Payne Drilling Co			
Pilot Studio	3.2.7268.7	District: RMD	Unit: D&E			

"These interpretations and analyses ("Interpretations") are opinions provided by Baker Hughes Oilfield Operations, Inc ("Baker Hughes"), based upon industry practice, empirical relationships, assumptions and measurements, (many of which may be provided by the customer). The Interpretations are not infallible and may be subject to different opinions. Thus, Baker Hughes does not warrant their accuracy, correctness, or completeness, or that the customer's and/or any third party's reliance on such Interpretations will accomplish any particular results. The customer assumes full responsibility for the use of the Interpretations and for decisions based thereon and the customer agrees to release, defend and indemnify Baker Hughes, its parent, subsidiaries and affiliated or related entities, and subcontractors, together with its and their officers, directors, employees, agents and invitees against, any and all claims, losses, damages, or expenses sustained by the customer or any third party arising out of reliance upon or use of the Interpretations, without regard to the cause(s) thereof, including without limitation any form of negligence on the

part of Baker Hughes. Unless other contract terms have been agreed to by the parties, each party's liabilities and obligations shall be governed by Baker Hughes Incorporated's Worldwide Terms and Conditions."

Log Run Summary

Run No	Bit Run No.	Bit Size (in)	Bit Type	Bit Gauge Length (in)	Assembly Type	Logged Interval		Bit Depth Interval		Date / Time		Circ. Hours (h)
						Top	Bottom	From	To	Start Logging	End Logging	
						(ft)	(ft)	(ft)	(ft)			
1	2	8.500	PDC	2.00	AutoTrak Curve	1915.27	14497.19	1928.00	14503.75	2016-06-12 07:11	2016-06-15 03:26	59.40
2	2	8.500	PDC	2.00	AutoTrak Curve	14491.57	17460.87	14503.75	17467.43	2016-06-15 21:25	2016-06-16 10:44	14.46

Crew

Name		Arrive Wellsite	Depart Wellsite	Name		Arrive Wellsite	Depart Wellsite	Name		Arrive Wellsite	Depart Wellsite
Akex Osborne		2016-06-11	2016-06-13	Mike Gurnsey		2016-06-11	2016-06-12	Will Drake		2016-06-11	2016-06-16
David Browning		2016-06-12	2016-06-17	Hans Cary		2016-06-13	2016-06-17	Austin Small		2016-06-15	2016-06-16
Brent Cass		2016-06-16	2016-06-17	Chad Hough		2016-06-16	2016-06-17				

Mud Properties Record

Date / Time	Run No.	Measured Depth (ft)	Mud Type	Density (ppg)	Viscosity (cP)	pH	Fluid Loss (cm3)	Oil / Water	Source	Total Chlorides (ppm)	K+ (%)
2016-06-11 10:51	1	1900.00	Oil Based Mud	9.7	26	8.4	97.0	0/98	Active Pit	1000	0.00
2016-06-12 13:30	1	3631.00	Oil Based Mud	9.6	48	N/A	0.0	75/25	Active Pit	35500	0.00
2016-06-13 13:30	1	8540.89	Oil Based Mud	9.8	46	N/A	0.0	74/26	Active Pit	38000	0.00
2016-06-14 13:30	1	12580.13	Oil Based Mud	9.8	46	N/A	0.0	73/27	Active Pit	35500	0.00
2016-06-15 13:30	2	14503.75	Oil Based Mud	9.7	52	N/A	0.0	72/28	Active Pit	34000	0.00

Equipment and Service Data

Run No.	Tool	Serial Number	Measurement	Sensor Offset (ft)	Bit Offset (ft)	Max O.D. (in)	Min I.D. (in)
1	ATC_SU	12099238	Near Bit VSS	5.93	6.56	7.000	4.330
1	ATC_SU	12099238	Near Bit Inclination	5.93	6.56	7.000	4.330
1	ATC_MWD	11993917	Gamma (single)	2.75	12.73	7.000	3.250
1	ATC_MWD	11993917	Directional (mag)	12.27	22.25	7.000	3.250
2	ATC_SU	11813726	Near Bit VSS	5.93	6.56	7.000	4.330
2	ATC_SU	11813726	Near Bit Inclination	5.93	6.56	7.000	4.330
2	ATC_MWD	12450401	Gamma (single)	2.20	12.18	7.000	3.250
2	ATC_MWD	12450401	Directional (mag)	12.27	22.25	7.000	3.250

Service and Tool Mnemonics

Mnemonic	Name	Description
ATC_SU	ATC_SU	Auto Trak Curve Steering Unit
ATC_MWD	ATC_MWD	Auto Trak Curve MWD
ATC_LCPM	ATC_LCPM	Auto Trak Curve LCPM

Comments


- 1 Baker Hughes Run 1 and 2 utilized a 6.75 inch AutoTrak Curve Rotary Steerable assembly tool behind a 8.50 inch bit from 1903 ft MD to 17347 ft MD (1902.99 ft TVD to 6731.45 ft TVD).
- 2 Depth Measurements obtained from a depth control system not supplied or operated by Baker Hughes. Due to a lack of control by Baker Hughes logging engineers, depth calibrations and measurements could not be independently verified

Remarks

Number	Measured Depth (ft)	Hole Section (in)	Run No.	Remark
1	1920.00	8.500	1	The interval from 1918 ft MD to 1931 ft MD (1917.99 ft TVD to 1931.99 ft TVD) has no surface data due to the Gamma Ray sensor to bit offset
2	14490.00	8.500	2	The interval from 14490 ft MD to 14503 ft MD (6663.40 ft TVD to 6663.60 ft TVD) was logged up to 15 hours after being drilled due to tripping out of the hole for a new drilling assembly
3	17450.00	8.500	2	The interval from 17442 ft MD to 17466 ft MD (6671.00 ft TVD to 6671.10 ft TVD) has no Gamma data due to sensor to bit offset

Curve Mnemonics

Presented Curves	Description	Units
ROPA	Depth Averaged ROP 3 ft Average	ft/h
GRAM	Gamma Ray - Apparent 3 ft Average	API
TCDM	Downhole Temperature	degF
WOBA	Weight On Bit, Average 1 ft Average	klb



Company

Well

Interval

Created

Noble Energy

Shadow A26-663

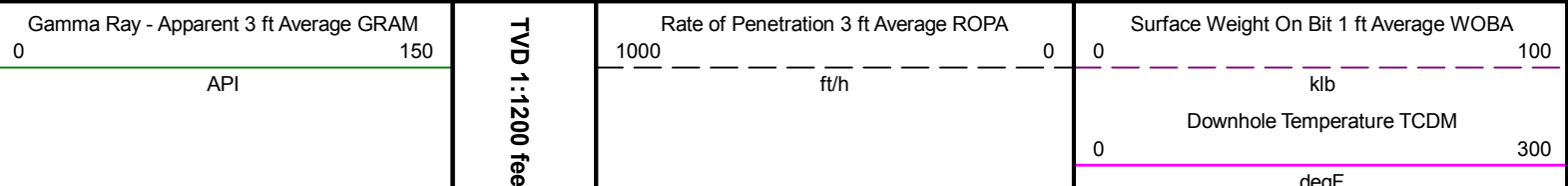
Date From:2016-06-12 07:11

Date To:2016-06-16 11:27

2016-06-19 09:09

Top:1913.00

Bottom:6671.00



deg

>R1

TCDM

WOBA

ROPA

GRAM

See Remark 1

1800

1900

2000

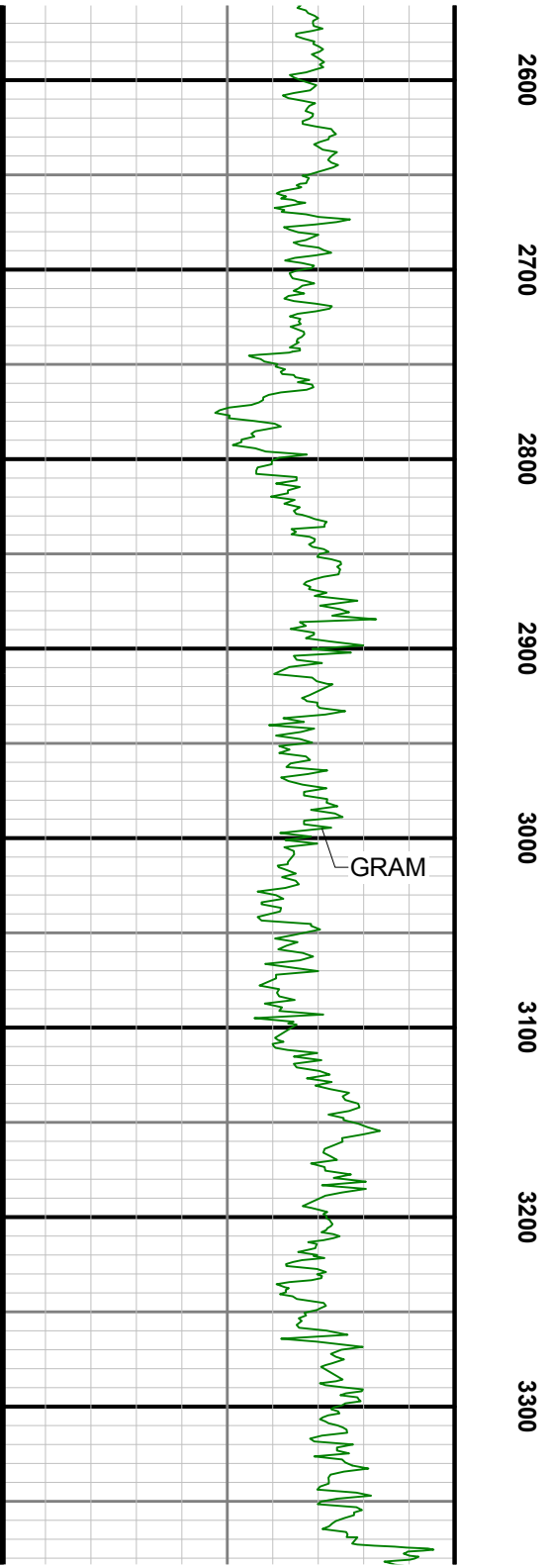
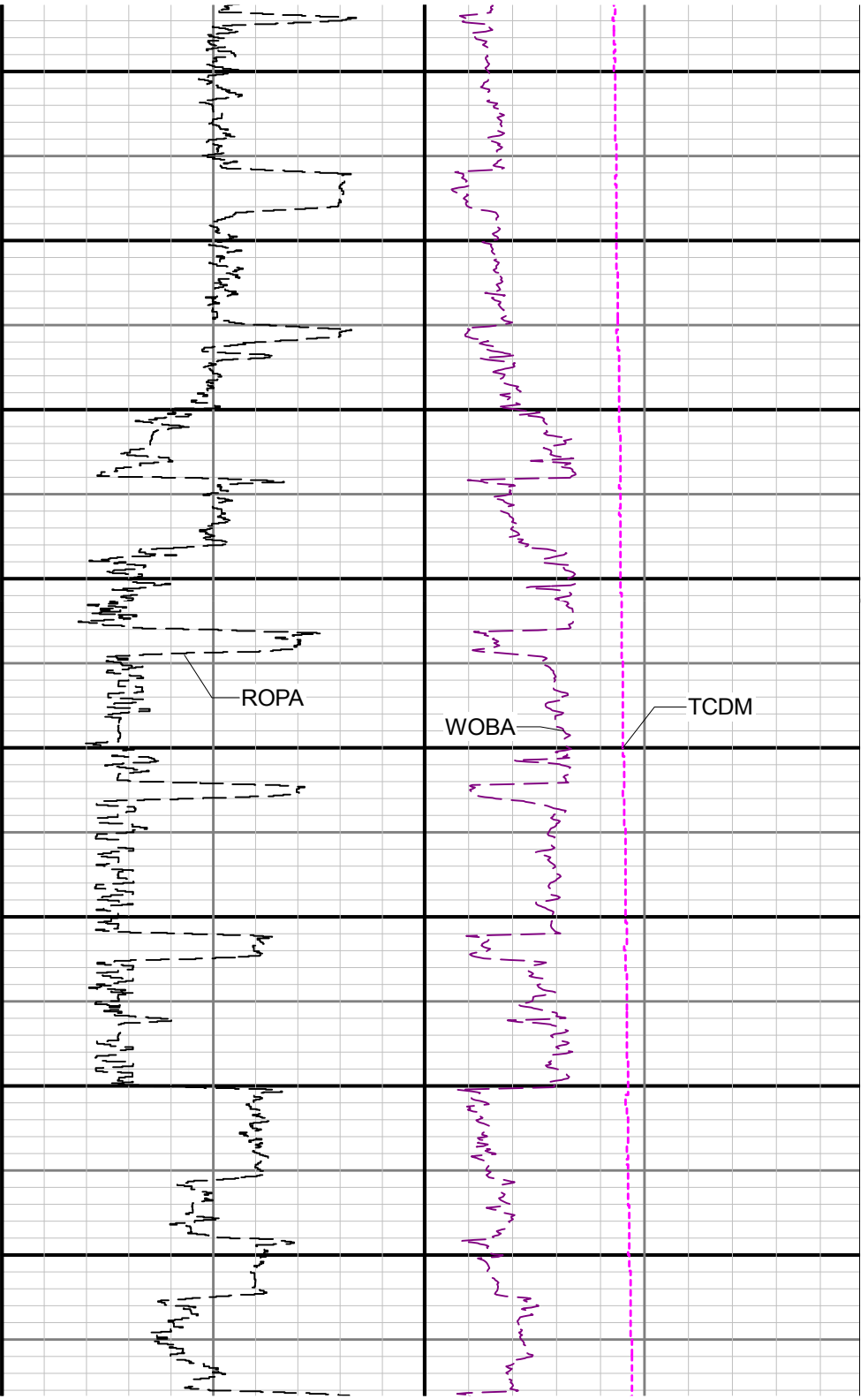
2100

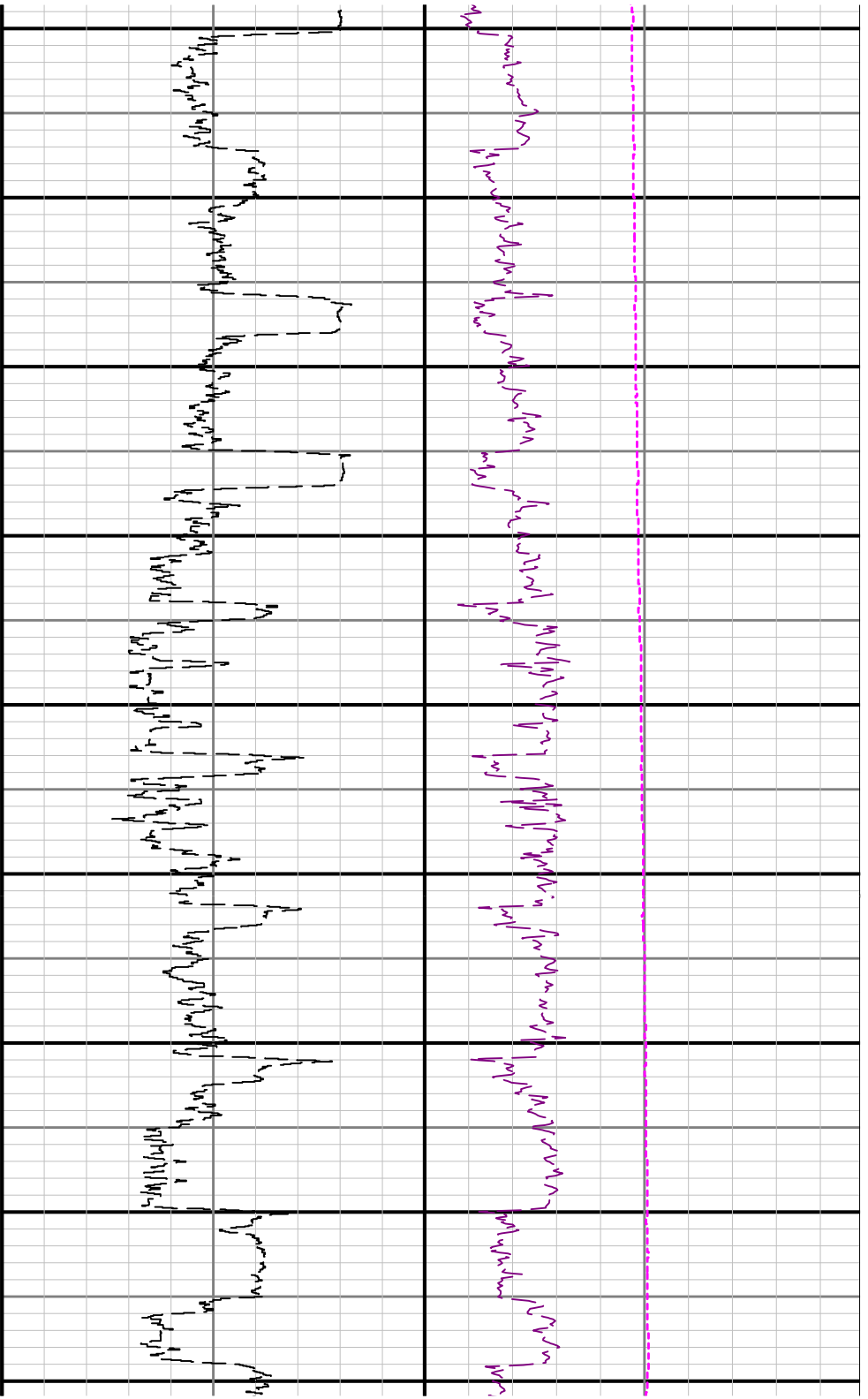
2200

2300

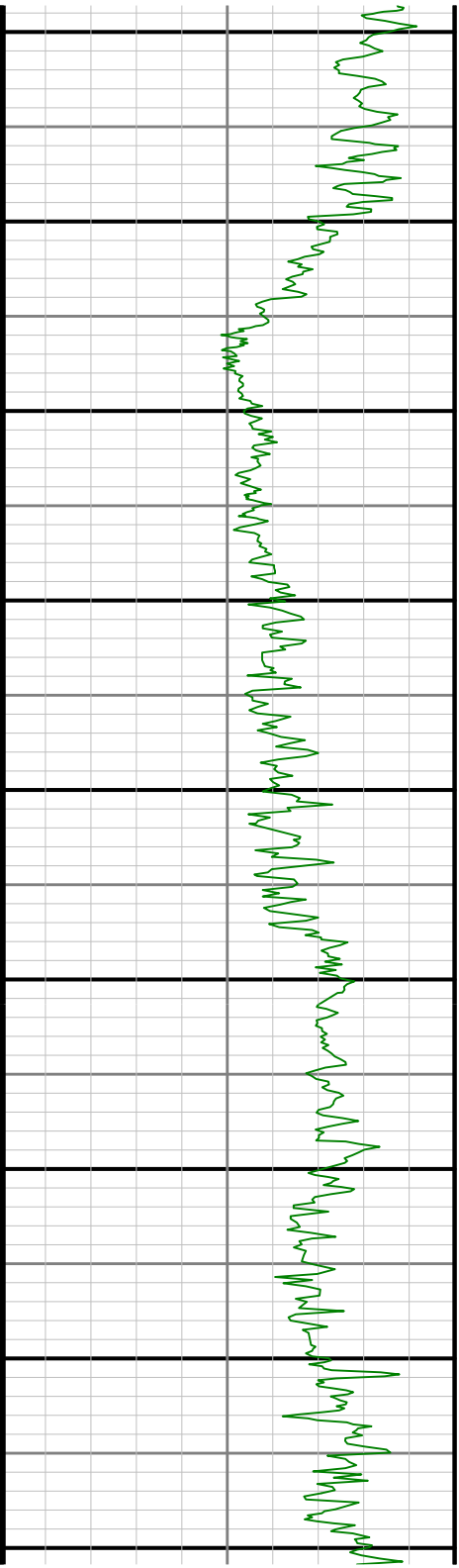
2400

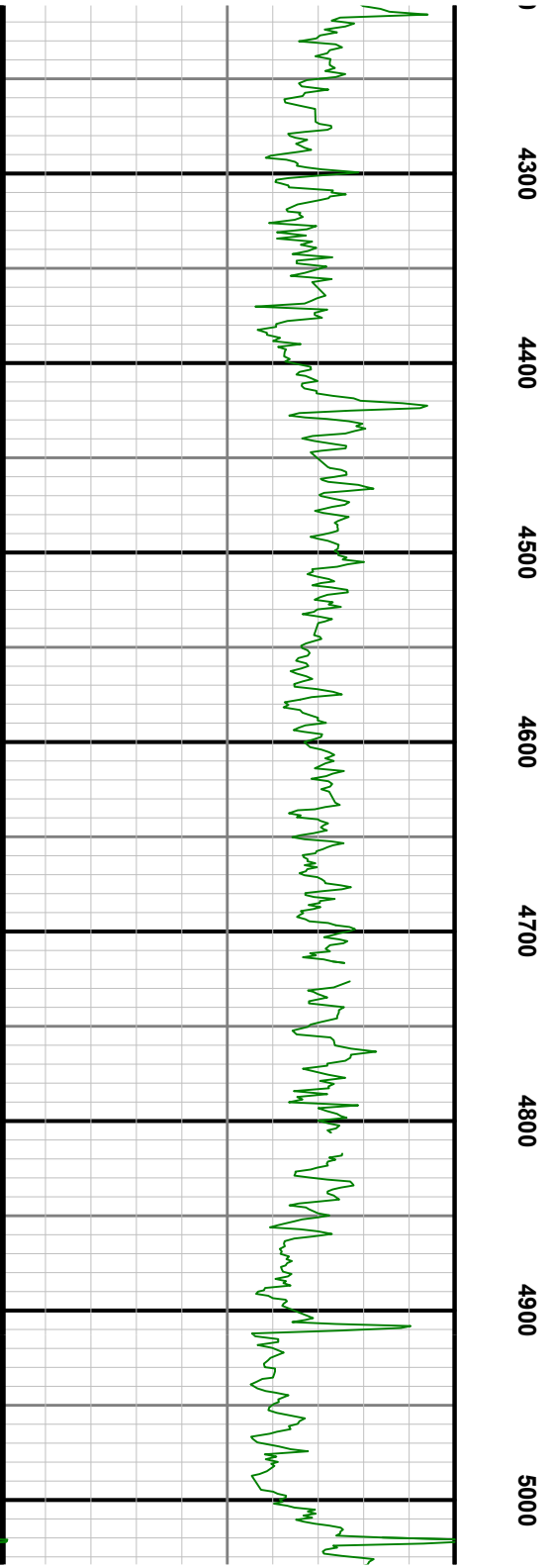
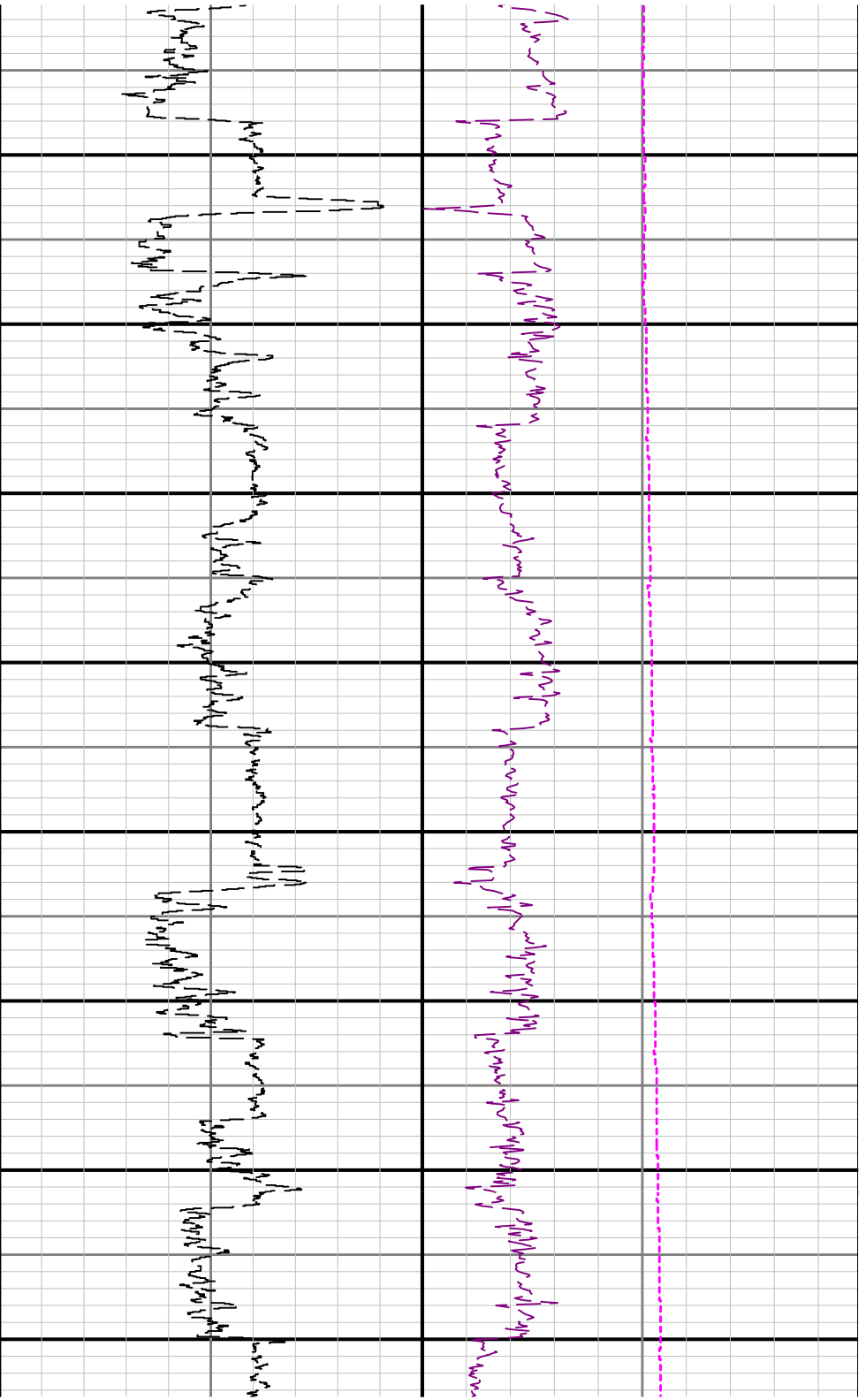
2500

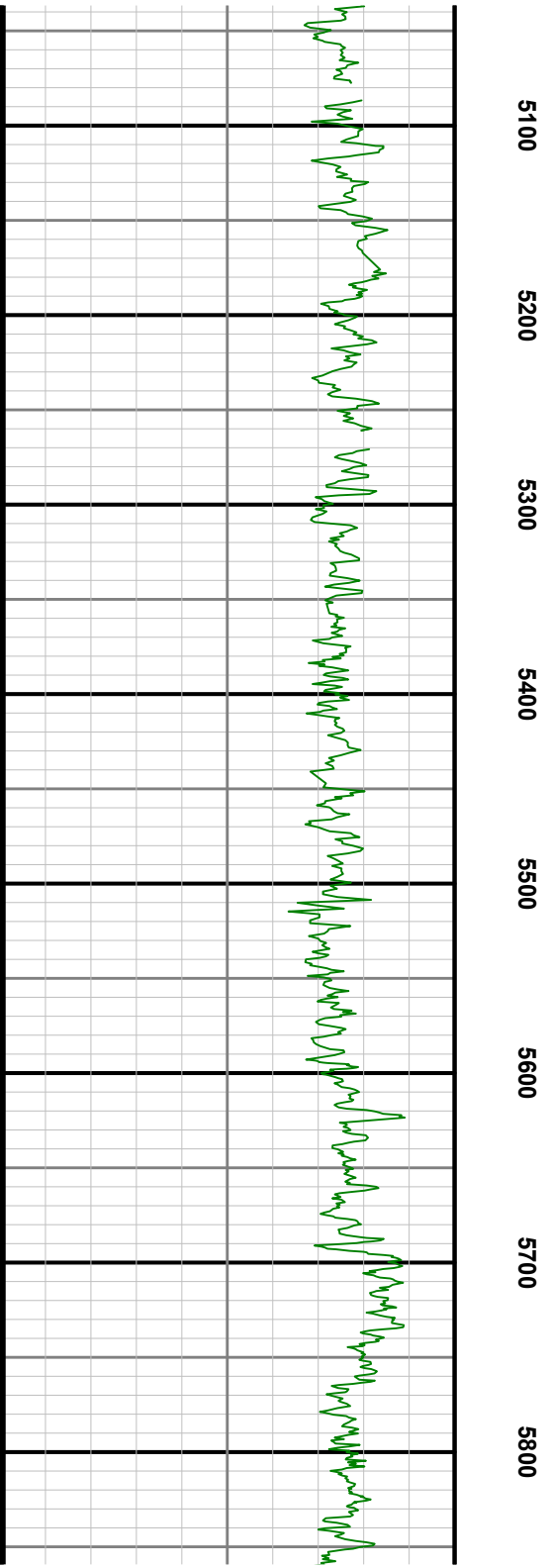
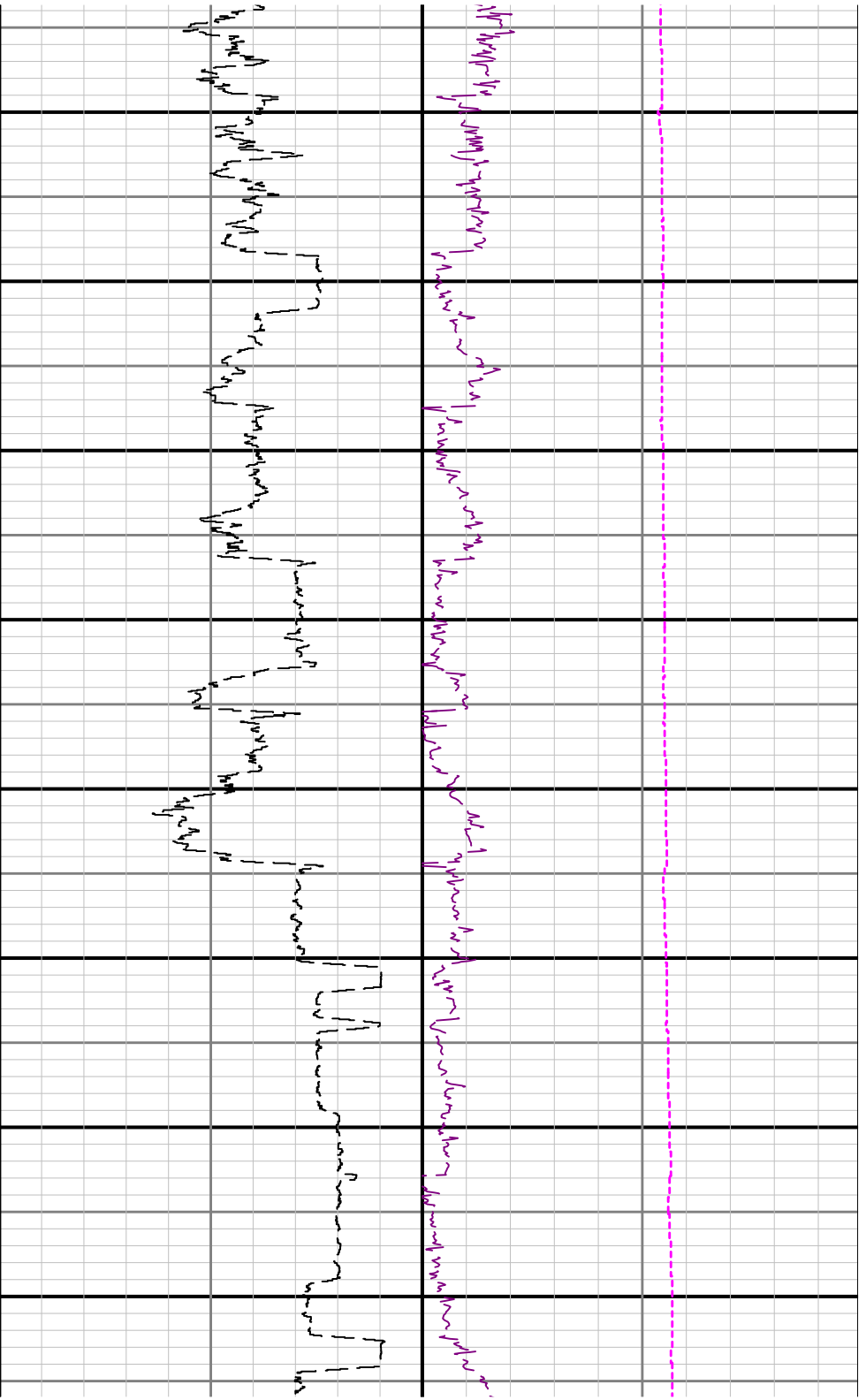


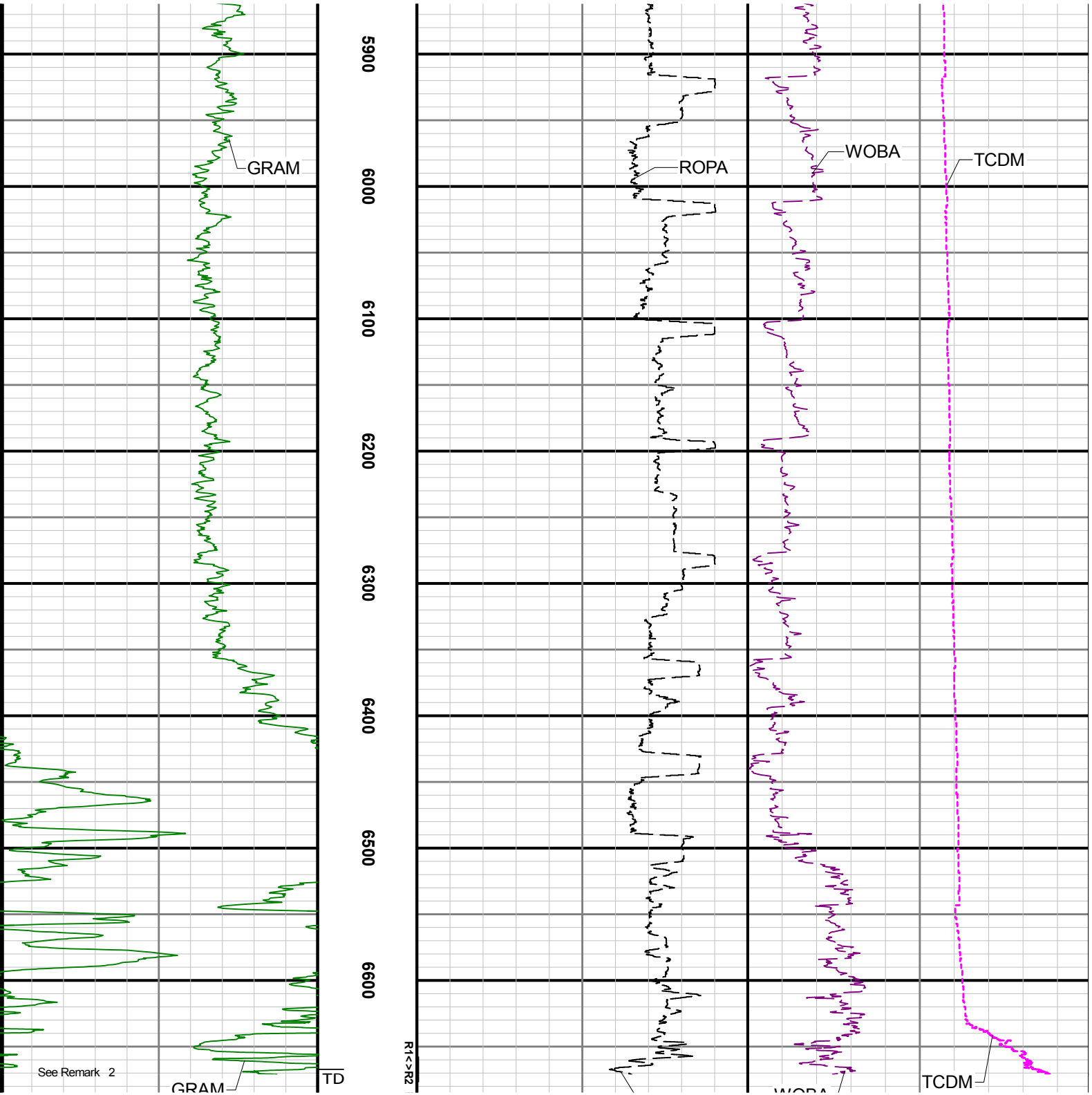


3400 3500 3600 3700 3800 3900 4000 4100 4200









See Remark 3

[illegible]

Directional Survey Summary

Latitude:	040° 27' 30.816" N	Longitude:	104° 28' 42.996" W
North Reference:	Grid	Drill Depth Zero:	Rig Floor
Vertical Datum is:	Ground Level	Vertical Datum to DDZ: (ft)	30.00
Vertical Section North: (m)	0.00	Vertical Section East: (m)	0.00
Vertical Section Azimuth: (deg)	272.07		
Grid Convergence: (deg)	-0.64	Magnetic Declination: (deg)	8.10
Total Correction: (deg)	7.46	TVD Calculation Method:	Minimum Curvature
Magnetic Correction:	Off	Local Magnetic Field: (nT)	52526
Local Magnetic Dip Angle: (deg)	67.13	Local Gravity Field: (m/s2)	9.801

Tie-In / Projection	Measured Depth (ft)	Inclination (deg)	Azimuth (deg)	Temperature (degF)	North (ft)	East (ft)	True Vertical Depth (ft)	Vertical Section (ft)	Course Length (ft)	Dog Leg Severity (deg/100ft)	Build Rate (deg/100ft)	Turn Rate (deg/100ft)
Tie-In	0.00	0.00	0.00	N/A	0.00	0.00	0.00	0.00	0.00	0.00	0.00	0.00
	1913.00	0.40	171.77	N/A	-10.26	-1.06	1912.96	0.68	1913.00	0.36	0.05	-52.00
	1981.00	1.52	110.66	112.2	-10.81	-0.18	1980.95	-0.21	68.00	2.02	1.65	-89.87
	2076.00	3.23	91.37	N/A	-11.32	3.68	2075.87	-4.08	95.00	1.96	1.80	-20.31
	2171.00	5.00	81.05	N/A	-10.74	10.44	2170.62	-10.82	95.00	2.01	1.86	-10.86
	2265.00	6.36	81.20	N/A	-9.30	19.64	2264.16	-19.96	94.00	1.45	1.45	0.16
	2360.00	7.76	64.87	N/A	-5.77	30.64	2358.44	-30.83	95.00	2.56	1.47	-17.19
	2455.00	10.34	62.24	N/A	0.92	44.00	2452.25	-43.93	95.00	2.75	2.72	-2.77
	2549.00	11.54	63.96	N/A	8.98	59.91	2544.54	-59.55	94.00	1.32	1.28	1.83
	2645.00	12.24	64.58	N/A	17.56	77.73	2638.48	-77.04	96.00	0.74	0.73	0.65
	2739.00	14.20	64.78	N/A	26.75	97.16	2729.99	-96.13	94.00	2.09	2.09	0.21
	2833.00	17.95	66.41	N/A	37.47	120.87	2820.30	-119.44	94.00	4.02	3.99	1.73
	2928.00	18.48	66.76	N/A	49.27	148.13	2910.54	-146.25	95.00	0.57	0.56	0.37
	3022.00	18.30	63.98	N/A	61.62	175.08	2999.74	-172.74	94.00	0.95	-0.19	-2.96
	3117.00	18.41	64.52	N/A	74.61	202.02	3089.90	-199.19	95.00	0.21	0.12	0.57
	3212.00	17.41	69.21	N/A	86.11	228.85	3180.30	-225.59	95.00	1.85	-1.05	4.94
	3306.00	18.39	71.10	N/A	95.91	256.03	3269.75	-252.40	94.00	1.21	1.04	2.01
	3401.00	17.47	71.29	N/A	105.34	283.71	3360.14	-279.72	95.00	0.97	-0.97	0.20
	3495.00	18.30	76.33	N/A	113.35	311.42	3449.60	-307.12	94.00	1.87	0.88	5.36
	3590.00	18.48	73.25	N/A	121.22	340.33	3539.75	-335.73	95.00	1.04	0.19	-3.24
	3684.00	18.46	65.34	N/A	131.72	368.12	3628.92	-363.13	94.00	2.66	-0.02	-8.41
	3779.00	18.49	60.02	N/A	145.52	394.84	3719.03	-389.33	95.00	1.77	0.03	-5.60

	3713.00	18.43	68.92	N/A	145.32	334.84	3713.03	-333.33	33.88	1.77	0.33	-5.38
	3874.00	18.69	58.69	N/A	160.96	420.90	3809.08	-414.81	95.00	0.49	0.21	-1.40
	3968.00	18.40	58.64	N/A	176.51	446.43	3898.20	-439.77	94.00	0.31	-0.31	-0.05
	4063.00	18.32	60.54	N/A	191.65	472.24	3988.36	-465.01	95.00	0.64	-0.08	2.00
	4158.00	18.55	64.63	N/A	205.47	498.89	4078.49	-491.14	95.00	1.38	0.24	4.31
	4252.00	18.25	67.42	N/A	217.53	525.99	4167.69	-517.79	94.00	0.99	-0.32	2.97
	4347.00	18.48	70.49	N/A	228.27	553.92	4257.85	-545.31	95.00	1.05	0.24	3.23
	4442.00	18.47	69.14	N/A	238.66	582.17	4347.95	-573.17	95.00	0.45	-0.01	-1.42
	4536.00	18.53	66.08	N/A	250.02	609.74	4437.10	-600.31	94.00	1.03	0.06	-3.26
	4631.00	18.57	65.36	N/A	262.44	637.29	4527.16	-627.40	95.00	0.24	0.04	-0.76
	4726.00	18.60	64.12	N/A	275.36	664.67	4617.21	-654.29	95.00	0.42	0.03	-1.31
	4820.00	18.29	63.78	N/A	288.42	691.39	4706.38	-680.52	94.00	0.35	-0.33	-0.36
	4915.00	18.39	67.09	N/A	300.84	718.57	4796.56	-707.23	95.00	1.10	0.11	3.48
	5010.00	18.68	67.26	N/A	312.56	746.40	4886.63	-734.63	95.00	0.31	0.31	0.18
	5105.00	18.63	63.93	N/A	325.11	774.06	4976.64	-761.82	95.00	1.12	-0.05	-3.51
	5200.00	17.06	63.12	N/A	338.08	800.13	5067.07	-787.39	95.00	1.67	-1.65	-0.85
	5294.00	14.98	66.88	N/A	349.08	823.60	5157.42	-810.45	94.00	2.47	-2.21	4.00
	5389.00	17.05	71.09	N/A	358.42	848.07	5248.73	-834.57	95.00	2.50	2.18	4.43
	5484.00	17.31	77.51	N/A	365.99	875.05	5339.50	-861.26	95.00	2.01	0.27	6.76
	5578.00	17.74	80.08	N/A	371.48	902.81	5429.13	-888.80	94.00	0.94	0.46	2.73
	5673.00	17.83	79.03	N/A	376.74	931.34	5519.59	-917.13	95.00	0.35	0.09	-1.11
	5768.00	14.08	72.71	N/A	382.95	956.67	5610.92	-942.21	95.00	4.34	-3.95	-6.65
	5863.00	9.39	54.46	N/A	390.89	974.02	5703.94	-959.27	95.00	6.24	-4.94	-19.21
	5958.00	5.94	23.69	N/A	399.91	982.31	5798.12	-967.22	95.00	5.52	-3.63	-32.39
	6052.00	7.65	354.87	N/A	410.60	983.71	5891.48	-968.23	94.00	4.00	1.82	-30.66
	6147.00	13.22	330.48	N/A	426.37	977.78	5984.92	-961.74	95.00	7.36	5.86	-25.67
	6242.00	15.75	297.88	N/A	441.88	961.00	6077.04	-944.41	95.00	8.85	2.66	-34.32
	6337.00	20.15	274.99	N/A	449.34	933.26	6167.50	-916.42	95.00	8.67	4.63	-24.09
	6431.00	25.79	272.87	N/A	451.78	896.67	6254.02	-879.77	94.00	6.06	6.00	-2.26
	6526.00	33.92	275.87	N/A	455.53	849.58	6336.35	-832.58	95.00	8.70	8.56	3.16
	6621.00	42.64	275.25	N/A	461.19	791.06	6410.85	-773.89	95.00	9.19	9.18	-0.65
	6715.00	50.25	274.96	N/A	467.24	723.26	6475.57	-705.91	94.00	8.10	8.10	-0.31
	6810.00	58.90	269.97	N/A	470.38	646.02	6530.61	-628.61	95.00	10.06	9.11	-5.25
	6905.00	66.29	267.29	N/A	468.30	561.78	6574.31	-544.50	95.00	8.17	7.78	-2.82
	6999.00	73.96	267.29	N/A	464.13	473.54	6606.24	-456.47	94.00	8.16	8.16	0.00
	7094.00	82.42	267.79	N/A	460.15	380.72	6625.67	-363.86	95.00	8.92	8.91	0.53
	7189.00	89.43	268.30	N/A	456.92	286.08	6632.42	-269.39	95.00	7.40	7.38	0.54
	7283.00	89.53	266.43	N/A	452.60	192.19	6633.27	-175.71	94.00	1.99	0.11	-1.99
	7378.00	89.98	265.59	N/A	445.98	97.42	6633.68	-81.25	95.00	1.00	0.47	-0.88
	7472.00	89.55	265.35	N/A	438.56	3.71	6634.06	12.13	94.00	0.52	-0.46	-0.26
	7567.00	89.98	266.39	N/A	431.72	-91.04	6634.45	106.57	95.00	1.18	0.45	1.09
	7662.00	89.58	267.11	N/A	426.33	-185.88	6634.82	201.16	95.00	0.87	-0.42	0.76
	7756.00	89.49	268.81	N/A	422.99	-279.82	6635.58	294.91	94.00	1.81	-0.10	1.81
	7851.00	89.58	269.55	N/A	421.63	-374.80	6636.35	389.79	95.00	0.78	0.09	0.78
	7946.00	89.65	270.26	N/A	421.47	-469.80	6636.99	484.72	95.00	0.75	0.07	0.75
	8040.00	89.83	270.68	N/A	422.24	-563.80	6637.41	578.68	94.00	0.49	0.19	0.45
	8135.00	89.74	270.14	N/A	422.92	-658.79	6637.77	673.64	95.00	0.58	-0.09	-0.57
	8230.00	89.77	270.45	N/A	423.41	-753.79	6638.18	768.59	95.00	0.33	0.03	0.33
	8419.00	89.68	269.01	N/A	422.52	-942.78	6639.08	957.43	189.00	0.76	-0.05	-0.76
	8514.00	89.40	268.36	N/A	420.34	-1037.75	6639.85	1052.26	95.00	0.74	-0.29	-0.68
	8609.00	89.46	267.46	N/A	416.88	-1132.68	6640.79	1147.00	95.00	0.95	0.06	-0.95
	8703.00	89.92	267.56	N/A	412.79	-1226.59	6641.30	1240.70	94.00	0.50	0.49	0.11
	8798.00	89.52	267.85	N/A	408.99	-1321.52	6641.76	1335.43	95.00	0.52	-0.42	0.31
	8893.00	89.49	269.45	N/A	406.75	-1416.48	6642.59	1430.25	95.00	1.68	-0.03	1.68
	8987.00	89.71	271.16	N/A	407.25	-1510.48	6643.24	1524.20	94.00	1.83	0.23	1.82
	9082.00	89.52	271.14	N/A	409.16	-1605.45	6643.88	1619.19	95.00	0.20	-0.20	-0.02

	9362.00	89.62	271.11	N/A	408.18	-1888.48	6645.20	1903.14	95.00	0.25	-0.16	-0.20
	9176.00	89.77	272.12	N/A	411.83	-1699.41	6644.46	1713.18	94.00	1.08	0.27	1.04
	9271.00	89.83	270.75	N/A	414.21	-1794.38	6644.79	1808.17	95.00	1.44	0.06	-1.44
	9366.00	89.68	270.56	N/A	415.30	-1889.37	6645.20	1903.14	95.00	0.25	-0.16	-0.20
	9460.00	90.48	270.51	N/A	416.17	-1983.37	6645.07	1997.11	94.00	0.85	0.85	-0.05
	9555.00	90.26	270.16	N/A	416.73	-2078.36	6644.46	2092.06	95.00	0.44	-0.23	-0.37
	9650.00	89.89	269.61	N/A	416.54	-2173.36	6644.33	2186.99	95.00	0.70	-0.39	-0.58
	9745.00	89.89	270.41	N/A	416.55	-2268.36	6644.51	2281.93	95.00	0.84	0.00	0.84
	9839.00	90.19	270.75	N/A	417.51	-2362.36	6644.45	2375.90	94.00	0.48	0.32	0.36
	9934.00	90.08	271.64	N/A	419.49	-2457.34	6644.22	2470.88	95.00	0.94	-0.12	0.94
	10029.00	89.95	271.21	N/A	421.85	-2552.31	6644.20	2565.88	95.00	0.47	-0.14	-0.45
	10123.00	89.95	270.63	N/A	423.36	-2646.29	6644.28	2659.86	94.00	0.62	0.00	-0.62
	10218.00	90.05	269.09	N/A	423.13	-2741.29	6644.28	2754.79	95.00	1.62	0.11	-1.62
	10313.00	89.86	269.12	N/A	421.64	-2836.28	6644.36	2849.66	95.00	0.20	-0.20	0.03
	10408.00	89.64	269.74	N/A	420.70	-2931.27	6644.77	2944.56	95.00	0.69	-0.23	0.65
	10502.00	89.24	267.75	N/A	418.64	-3025.24	6645.69	3038.39	94.00	2.16	-0.43	-2.12
	10597.00	89.31	267.21	N/A	414.46	-3120.14	6646.89	3133.08	95.00	0.57	0.07	-0.57
	10692.00	90.01	267.18	N/A	409.81	-3215.03	6647.45	3227.73	95.00	0.74	0.74	-0.03
	10786.00	89.74	261.90	N/A	400.87	-3308.57	6647.66	3320.89	94.00	5.62	-0.29	-5.62
	10881.00	89.89	263.60	N/A	388.88	-3402.80	6647.97	3414.63	95.00	1.80	0.16	1.79
	10976.00	89.83	267.93	N/A	381.87	-3497.52	6648.20	3509.03	95.00	4.56	-0.06	4.56
	11070.00	89.71	270.06	N/A	380.22	-3591.50	6648.58	3602.89	94.00	2.27	-0.13	2.27
	11165.00	89.61	271.95	N/A	381.89	-3686.48	6649.14	3697.87	95.00	1.99	-0.11	1.99
	11260.00	89.68	271.54	N/A	384.78	-3781.43	6649.73	3792.86	95.00	0.44	0.07	-0.43
	11354.00	89.74	270.64	N/A	386.57	-3875.41	6650.20	3886.85	94.00	0.96	0.06	-0.96
	11449.00	89.95	272.34	N/A	389.04	-3970.38	6650.46	3981.84	95.00	1.80	0.22	1.79
	11543.00	89.83	271.01	N/A	391.79	-4064.33	6650.64	4075.83	94.00	1.42	-0.13	-1.41
	11637.00	89.55	264.38	N/A	388.01	-4158.20	6651.15	4169.51	94.00	7.06	-0.30	-7.05
	11732.00	89.55	263.14	N/A	377.68	-4252.64	6651.90	4263.50	95.00	1.31	0.00	-1.31
	11827.00	89.77	265.37	N/A	368.17	-4347.15	6652.46	4357.61	95.00	2.36	0.23	2.35
	11921.00	89.61	266.61	N/A	361.60	-4440.92	6652.97	4451.08	94.00	1.33	-0.17	1.32
	12016.00	89.89	271.72	N/A	360.22	-4535.88	6653.38	4545.93	95.00	5.39	0.29	5.38
	12111.00	90.01	273.22	N/A	364.31	-4630.79	6653.47	4640.92	95.00	1.58	0.13	1.58
	12205.00	90.01	273.54	N/A	369.85	-4724.62	6653.45	4734.90	94.00	0.34	0.00	0.34
	12395.00	89.71	272.81	N/A	380.38	-4914.33	6653.92	4924.86	190.00	0.42	-0.16	-0.38
	12490.00	89.67	272.03	N/A	384.39	-5009.24	6654.43	5019.86	95.00	0.82	-0.04	-0.82
	12584.00	89.80	271.11	N/A	386.96	-5103.20	6654.86	5113.85	94.00	0.99	0.14	-0.98
	12774.00	89.71	271.14	N/A	390.69	-5293.17	6655.68	5303.82	190.00	0.05	-0.05	0.02
	12868.00	89.67	272.03	N/A	393.29	-5387.13	6656.19	5397.82	94.00	0.95	-0.04	0.95
	12963.00	89.67	271.54	N/A	396.25	-5482.08	6656.73	5492.81	95.00	0.52	0.00	-0.52
	13058.00	89.71	270.98	N/A	398.34	-5577.05	6657.25	5587.80	95.00	0.59	0.04	-0.59
	13152.00	89.80	270.00	N/A	399.14	-5671.05	6657.65	5681.77	94.00	1.05	0.10	-1.04
	13247.00	89.64	269.08	N/A	398.38	-5766.04	6658.11	5776.67	95.00	0.98	-0.17	-0.97
	13342.00	89.74	269.33	N/A	397.06	-5861.03	6658.63	5871.55	95.00	0.28	0.11	0.26
	13436.00	89.95	268.65	N/A	395.41	-5955.02	6658.88	5965.41	94.00	0.76	0.22	-0.72
	13531.00	89.77	268.72	N/A	393.23	-6049.99	6659.11	6060.25	95.00	0.20	-0.19	0.07
	13720.00	89.71	269.38	N/A	390.09	-6238.96	6659.97	6248.98	189.00	0.35	-0.03	0.35
	13815.00	89.67	268.82	N/A	388.60	-6333.95	6660.48	6343.85	95.00	0.59	-0.04	-0.59
	13909.00	89.71	269.70	N/A	387.39	-6427.94	6660.99	6437.74	94.00	0.94	0.04	0.94
	14004.00	89.95	270.19	N/A	387.30	-6522.94	6661.28	6532.67	95.00	0.57	0.25	0.52
	14099.00	89.64	270.05	N/A	387.50	-6617.94	6661.62	6627.62	95.00	0.36	-0.33	-0.15
	14194.00	89.77	270.16	N/A	387.67	-6712.94	6662.10	6722.56	95.00	0.18	0.14	0.12
	14288.00	89.71	271.07	N/A	388.68	-6806.93	6662.53	6816.53	94.00	0.97	-0.06	0.97
	14383.00	89.81	271.42	N/A	390.74	-6901.91	6662.93	6911.52	95.00	0.38	0.11	0.37
	14477.00	89.63	271.38	N/A	393.04	-6995.88	6663.39	7005.51	94.00	0.20	-0.19	-0.04
	14572.00	89.69	271.16	N/A	395.14	-7090.85	6663.95	7100.50	95.00	0.24	0.06	-0.23

	14667.00	89.69	270.98	N/A	396.92	-7185.83	6664.47	7195.48	95.00	0.19	0.00	-0.19
	14761.00	89.75	270.76	N/A	398.35	-7279.82	6664.93	7289.46	94.00	0.24	0.06	-0.23
	14856.00	89.75	270.45	N/A	399.35	-7374.81	6665.34	7384.43	95.00	0.33	0.00	-0.33
	14950.00	89.75	270.15	N/A	399.84	-7468.81	6665.75	7478.38	94.00	0.32	0.00	-0.32
	15045.00	89.69	269.55	N/A	399.59	-7563.81	6666.21	7573.31	95.00	0.63	-0.06	-0.63
	15139.00	89.72	268.90	N/A	398.32	-7657.80	6666.70	7667.19	94.00	0.69	0.03	-0.69
	15234.00	89.97	269.10	N/A	396.66	-7752.79	6666.96	7762.05	95.00	0.34	0.26	0.21
	15329.00	89.91	269.21	N/A	395.26	-7847.78	6667.05	7856.93	95.00	0.13	-0.06	0.12
	15424.00	89.91	268.98	N/A	393.76	-7942.76	6667.20	7951.80	95.00	0.24	0.00	-0.24
	15518.00	90.00	269.45	N/A	392.47	-8036.75	6667.28	8045.69	94.00	0.51	0.10	0.50
	15613.00	89.94	269.78	N/A	391.84	-8131.75	6667.33	8140.60	95.00	0.35	-0.06	0.35
	15708.00	89.82	270.02	N/A	391.67	-8226.75	6667.53	8235.53	95.00	0.28	-0.13	0.25
	15802.00	89.82	269.68	N/A	391.42	-8320.75	6667.82	8329.46	94.00	0.36	0.00	-0.36
	15897.00	89.72	269.48	N/A	390.73	-8415.75	6668.20	8424.37	95.00	0.24	-0.11	-0.21
	15992.00	89.66	268.85	N/A	389.34	-8510.73	6668.72	8519.24	95.00	0.67	-0.06	-0.66
	16086.00	89.97	268.14	N/A	386.87	-8604.70	6669.02	8613.06	94.00	0.82	0.33	-0.76
	16181.00	89.94	270.00	N/A	385.33	-8699.68	6669.10	8707.93	95.00	1.96	-0.03	1.96
	16276.00	89.88	271.38	N/A	386.48	-8794.68	6669.24	8802.90	95.00	1.45	-0.06	1.45
	16370.00	89.91	270.18	N/A	387.76	-8888.66	6669.42	8896.87	94.00	1.28	0.03	-1.28
	16465.00	89.88	270.00	N/A	387.90	-8983.66	6669.59	8991.81	95.00	0.19	-0.03	-0.19
	16559.00	89.85	269.57	N/A	387.55	-9077.66	6669.81	9085.74	94.00	0.46	-0.03	-0.46
	16749.00	89.91	270.49	N/A	387.65	-9267.66	6670.21	9275.62	190.00	0.49	0.03	0.48
	16843.00	89.88	269.15	N/A	387.36	-9361.66	6670.38	9369.54	94.00	1.43	-0.03	-1.43
	16938.00	89.97	269.73	N/A	386.43	-9456.65	6670.51	9464.44	95.00	0.62	0.09	0.61
	17032.00	89.94	270.69	N/A	386.77	-9550.65	6670.58	9558.39	94.00	1.02	-0.03	1.02
	17127.00	89.94	270.63	N/A	387.87	-9645.64	6670.68	9653.36	95.00	0.06	0.00	-0.06
	17222.00	89.91	270.62	N/A	388.90	-9740.64	6670.80	9748.33	95.00	0.03	-0.03	-0.01
	17317.00	89.97	270.63	N/A	389.94	-9835.63	6670.90	9843.30	95.00	0.06	0.06	0.01
	17442.00	89.85	269.99	N/A	390.62	-9960.63	6671.10	9968.24	125.00	0.52	-0.10	-0.51