



Gamma Ray Natural Formation Evaluation

LWD Composite Log

Scale:	Company: Noble Energy					
1:240 TVD	Well: Shadow A26-656					
Depth Reference:	Field: Weld County (Noble NAD 83 Grid)					
Driller's Depth	County:	Weld	State:	Colorado		
Status:	Surface Location:		Other Services:			
Final Print	Latitude:		Directional Rotary Steerable VSS			
API No: 05-123-42881-00	Longitude:					
Job ID: 7928807	SEC: 30	TMN: 6N	RGE: 63W			
Permanent Datum (P.D.):	Ground Level	Elevation:	4650.00 ft	KB: 0.00 ft		
Log Measured From:	Rig Floor	Above P.D.	30.00 ft	DF: 4680.00 ft		
			GL:	4650.00 ft		
Dates	Interval Logged		Magnetic Field Reference			
Date From: 2016-06-04	Top: (ft) 1886.00	Azi Reference North:	Grid	Dip Angle: (deg) 67.13		
Date To: 2016-06-09	Bottom: (ft) 17347.00	Total Magnetic Field Strength: (nT)		52531		
Spud Date: 2016-06-03		Mag to Reference North Correction: (deg)		7.47 E		
Borehole Record			Casing Record			
Hole Size (in)	From (ft)	To (ft)	Size (in)	Weight (lb/ft)	From (ft)	To (ft)
8.500	1903.00	17347.00	9.625	36.00		30.00
Mud Record						
Type	From (ft)	To (ft)	Hole Size (in)	Interval (ft)	Inc Az (Start)	Inc Az (End)
Oil Based Mud	1903.00	17347.00	8.500	15444.00	0.45 97.53	89.90 269.59
Acquisition System						
Baker Hughes Cadence	G3.2	H&P 524	Rig:	Contractor:	Helmerich & Payne Drilling Co	Unit: D&E
Plot Studio	3.2.7268.7	District:	RMD			

"These interpretations and analyses ("Interpretations") are opinions provided by Baker Hughes Oilfield Operations, Inc ("Baker Hughes"), based upon industry practice, empirical relationships, assumptions and measurements, (many of which may be provided by the customer). The Interpretations are not infallible and may be subject to different opinions. Vjwu. "Dcmgt"JwiJgu"fqgu"pqv"ycttcpv"vjgkt"ceewtce{. "eqttgevpguu. "qt"eqorngvgpguu. "qt"vjcv"vjg"ewuvqogtø"cpflqt"cp{"vjktf"rctv{øu"tgnkcepg"qp"uwej"Kpvgtrtgvcvkqpu"yknn"ceeQornkuJ"cp{"rctvkewnct"tguwnvu0"Vjg"ewuvqogt"cuuwogu"hwnn" responsibility for the use of the Interpretations and for decisions based thereon and the customer agrees to release, defend and indemnify Baker Hughes, its parent, subsidiaries and affiliated or related entities, and subcontractors, together with its and their officers, directors, employees, agents and invitees against, any and all claims, losses, damages, or expenses sustained by the customer or any third party arising out of reliance upon or use of the Interpretations, without regard to the cause(s) thereof, including without limitation any form of negligence on the

part of Baker Hughes. Unless other contract terms have been agreed to by the parties, each party's liabilities and obligations shall be limited to the amount of the cash or cash equivalents actually received by Baker Hughes from the other party.

qdnkicvkqpu"ujcnn"dg"iqxgtpgf"d{"Dcmgt"JwiJgu"Kpeqtrqtcvgfu"Yqtnfykfg"Vgtou"cpf"Eqpfkvkqpu0\$""

Log Run Summary

Run No	Bit Run No.	Bit Size (in)	Bit Type	Bit Gauge Length (in)	Assembly Type	Logged Interval		Bit Depth Interval		Date / Time		Circ. Hours (h)
						Top	Bottom	From	To	Start Logging	End Logging	
						(ft)	(ft)	(ft)	(ft)			
1	2	8.500	PDC	2.00	AutoTrak Curve	1890.00	13013.00	1903.00	13013.00	2016-06-04 14:23	2016-06-06 19:54	49.99
2	3	8.500	PDC	2.00	AutoTrak Curve	13001.00	17347.00	13013.00	17347.00	2016-06-07 10:16	2016-06-08 21:32	34.35

Crew

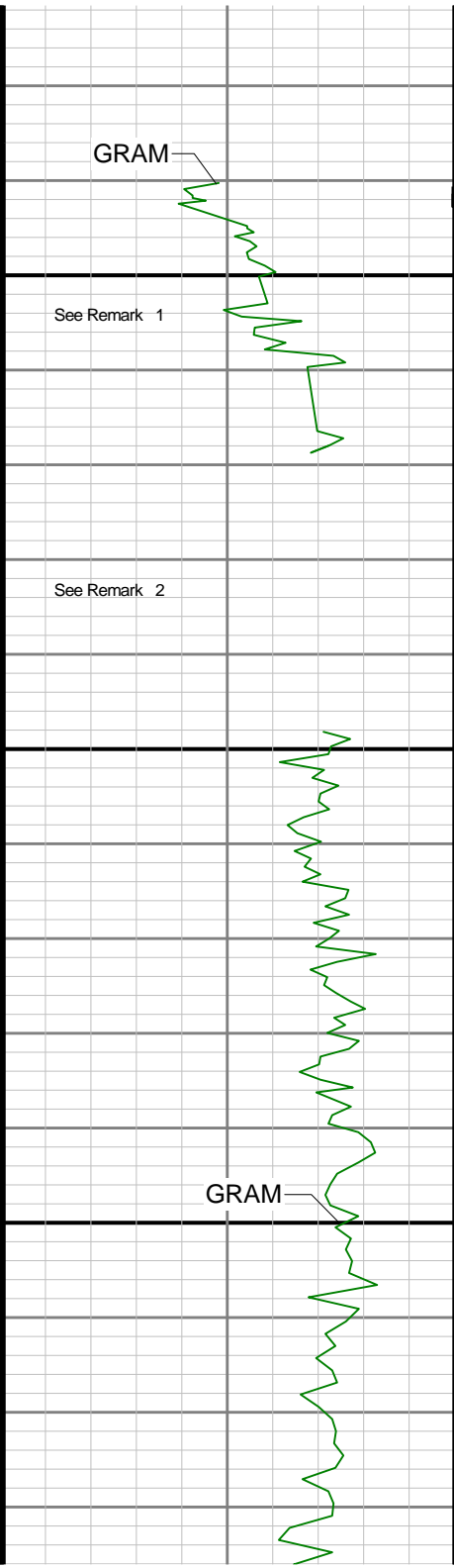
Name		Arrive Wellsite	Depart Wellsite	Name		Arrive Wellsite	Depart Wellsite	Name		Arrive Wellsite	Depart Wellsite
David Browning		2016-06-01	2016-06-05	Mike Gurnsey		2016-06-01	2016-06-09	Alexander Osborne		2016-06-02	2016-06-09
Chad Hough		2016-06-03	2016-06-05	Matthew Delmore		2016-06-05	2016-06-09	Will Drake		2016-06-05	2016-06-09

Mud Properties Record

Date / Time		Run No.	Measured Depth (ft)	Mud Type	Density (ppg)	Viscosity (cP)	pH	Fluid Loss (cm3)	Oil / Water	Source	Total Chlorides (ppm)	K+ (%)
2016-06-04 13:00		1	1903.00	Oil Based Mud	9.5	13	N/A	18.0	64.5/25.0	Active Pit	34500	0.00
2016-06-05 02:15		1	5764.00	Oil Based Mud	9.4	14	N/A	19.6	63.0/27.0	Active Pit	41500	0.00
2016-06-05 13:00		1	7682.00	Oil Based Mud	9.6	14	N/A	19.2	63.5/25.0	Active Pit	40000	0.00
2016-06-06 02:15		1	10680.00	Oil Based Mud	9.7	16	N/A	21.0	64.0/23.5	Active Pit	42000	0.00
2016-06-06 13:00		1	12504.00	Oil Based Mud	9.8	13	N/A	18.0	65.0/22.0	Active Pit	42000	0.00
2016-06-07 02:15		1	13013.00	Oil Based Mud	9.7	11	N/A	18.0	67.0/20.5	Active Pit	39000	0.00
2016-06-07 17:00		2	13552.00	Oil Based Mud	9.7	13	N/A	18.2	66.5/20.6	Active Pit	39000	0.00
2016-06-08 02:15		2	14911.00	Oil Based Mud	9.9	14	N/A	21.2	64.1/22.0	Active Pit	42000	0.00
2016-06-08 13:00		2	16439.00	Oil Based Mud	9.8	13	N/A	19.0	64.5/22.0	Active Pit	37500	0.00

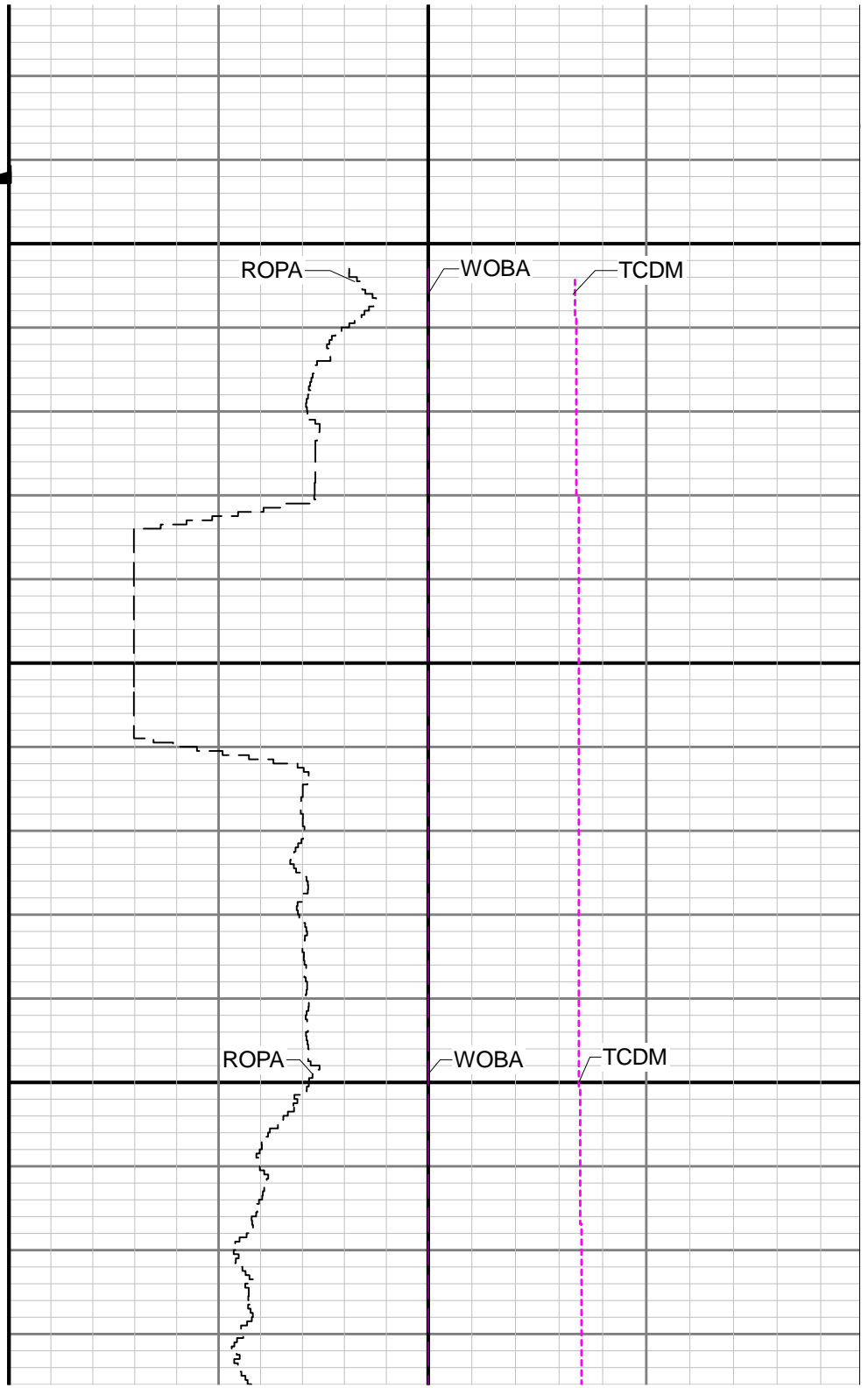
Equipment and Service Data

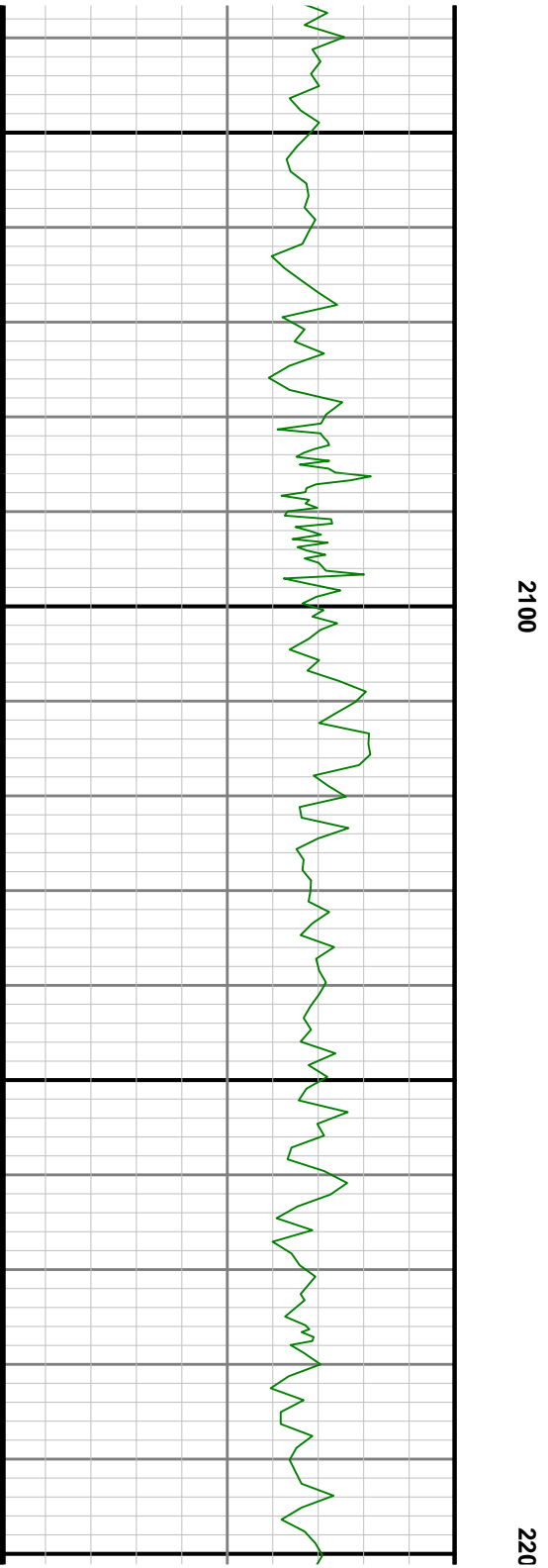
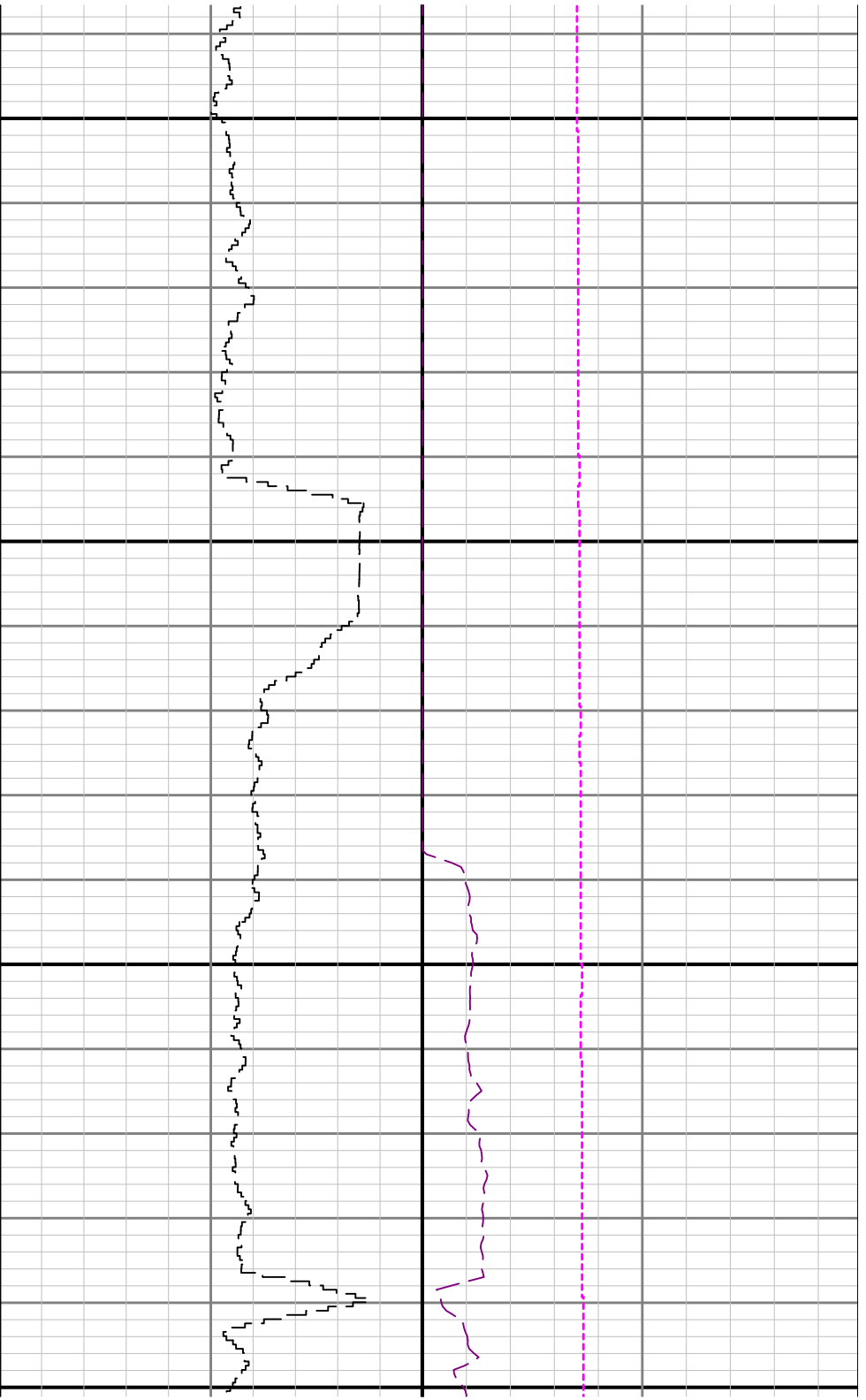
Run No.	Tool	Serial Number	Measurement	Sensor Offset (ft)	Bit Offset (ft)	Max O.D. (in)	Min I.D. (in)
1	ATC_SU	12296372	Near Bit VSS	5.93	6.55	7.000	4.330
1	ATC_SU	12296372	Near Bit Inclination	5.93	6.55	7.000	4.330
1	ATC_MWD	12271999	Gamma (single)	2.75	12.72	6.840	2.250
1	ATC_MWD	12271999	Directional (mag)	12.27	22.24	6.840	2.250
2	ATC_SU	12653419	Near Bit Inclination	5.93	6.55	7.020	4.330

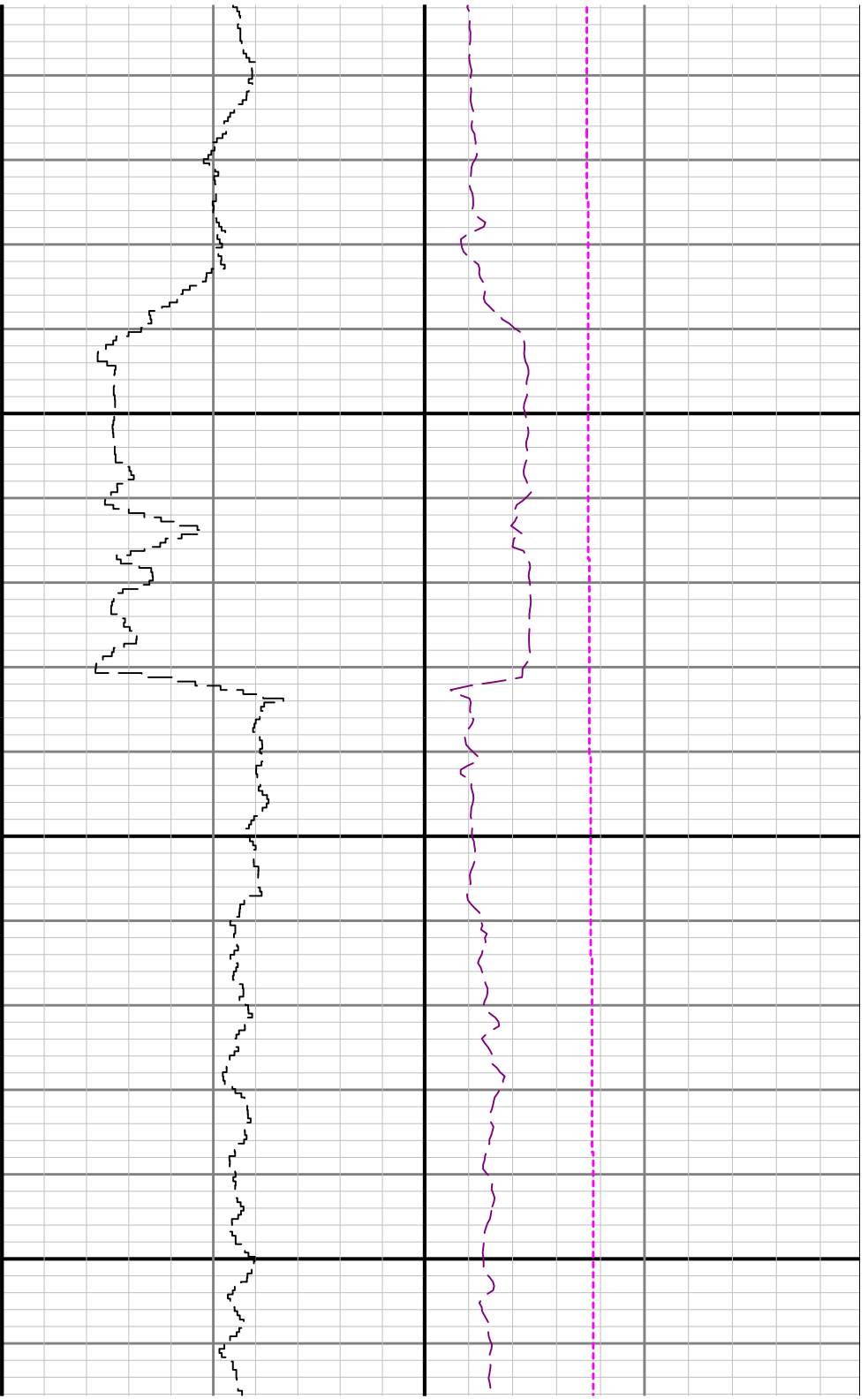


1900

2000

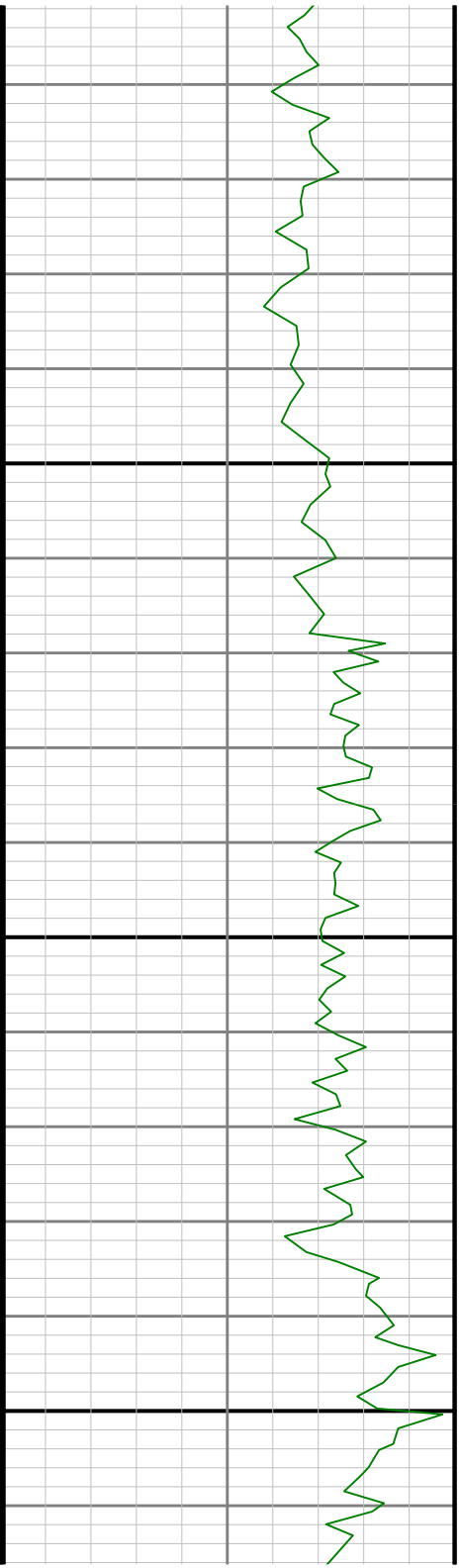


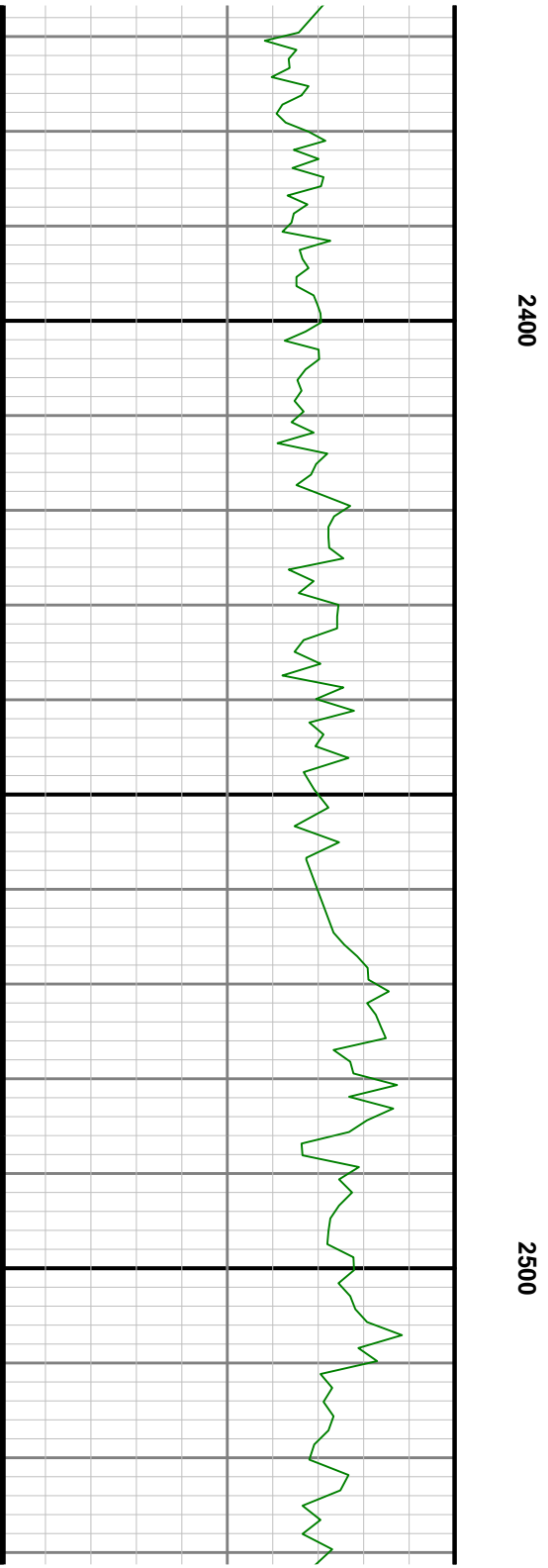
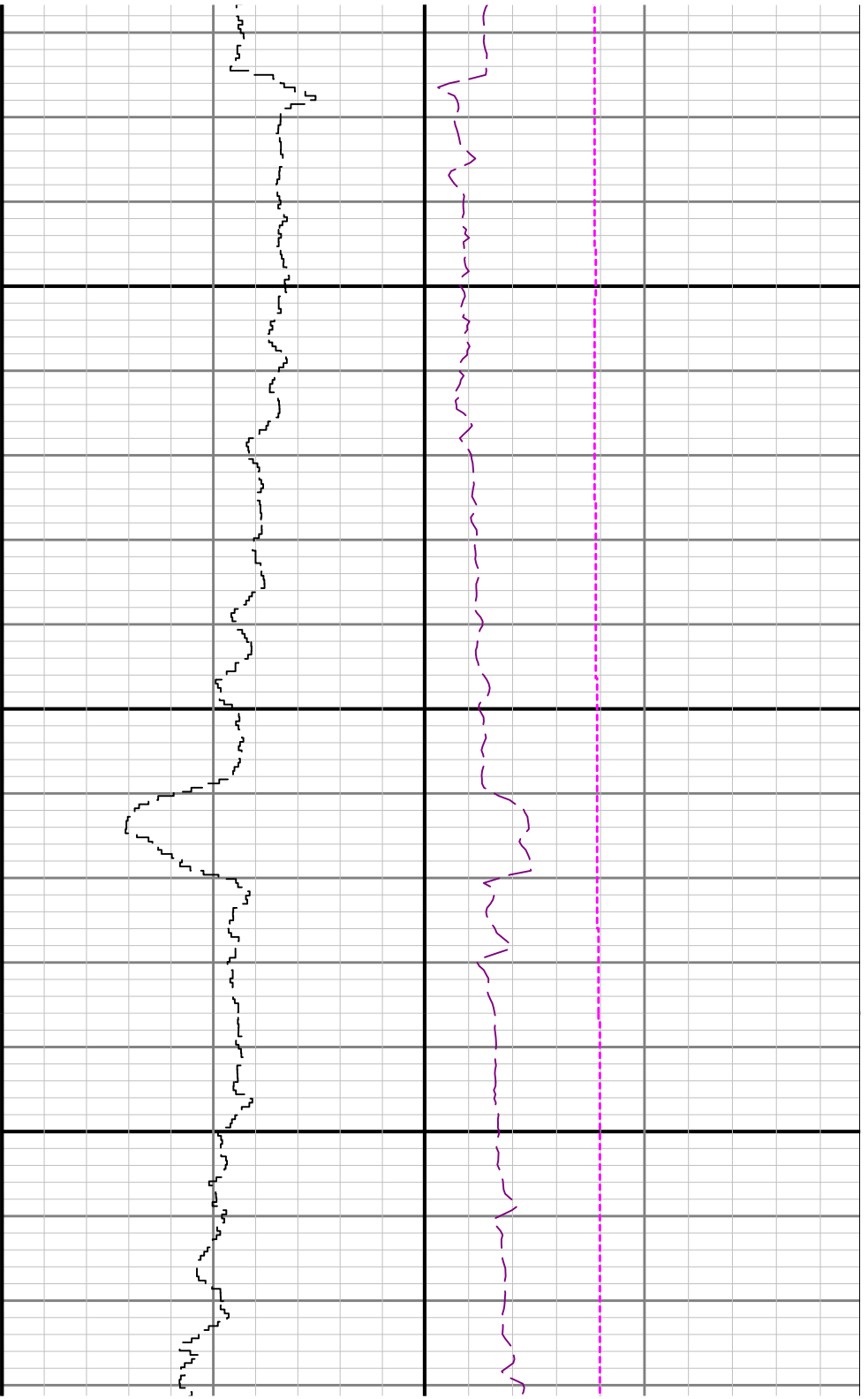


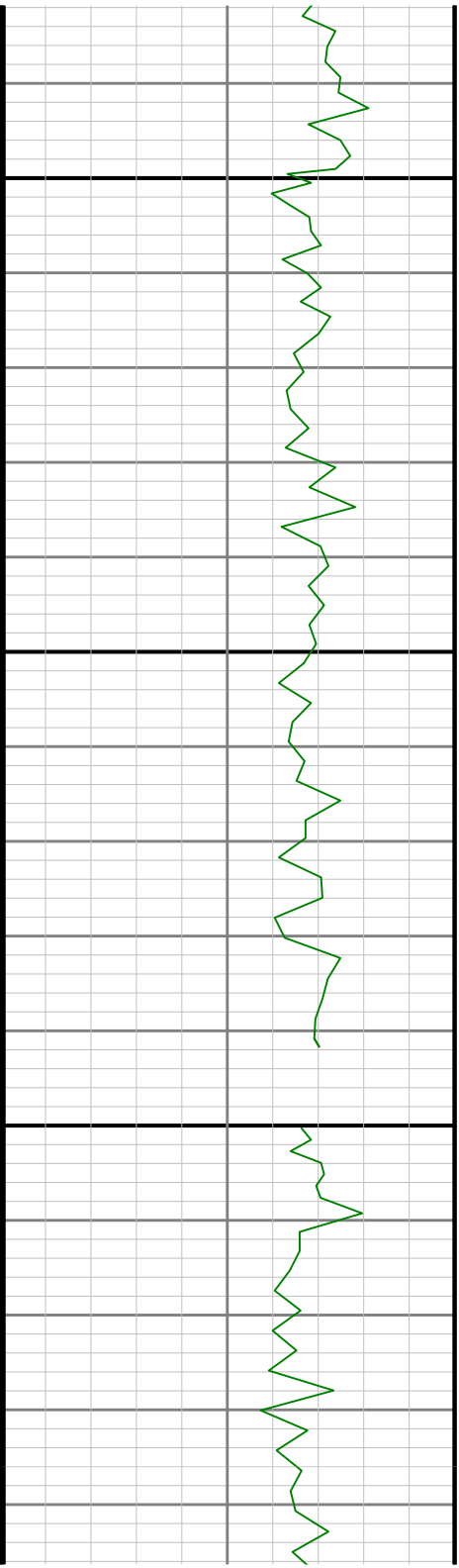


0

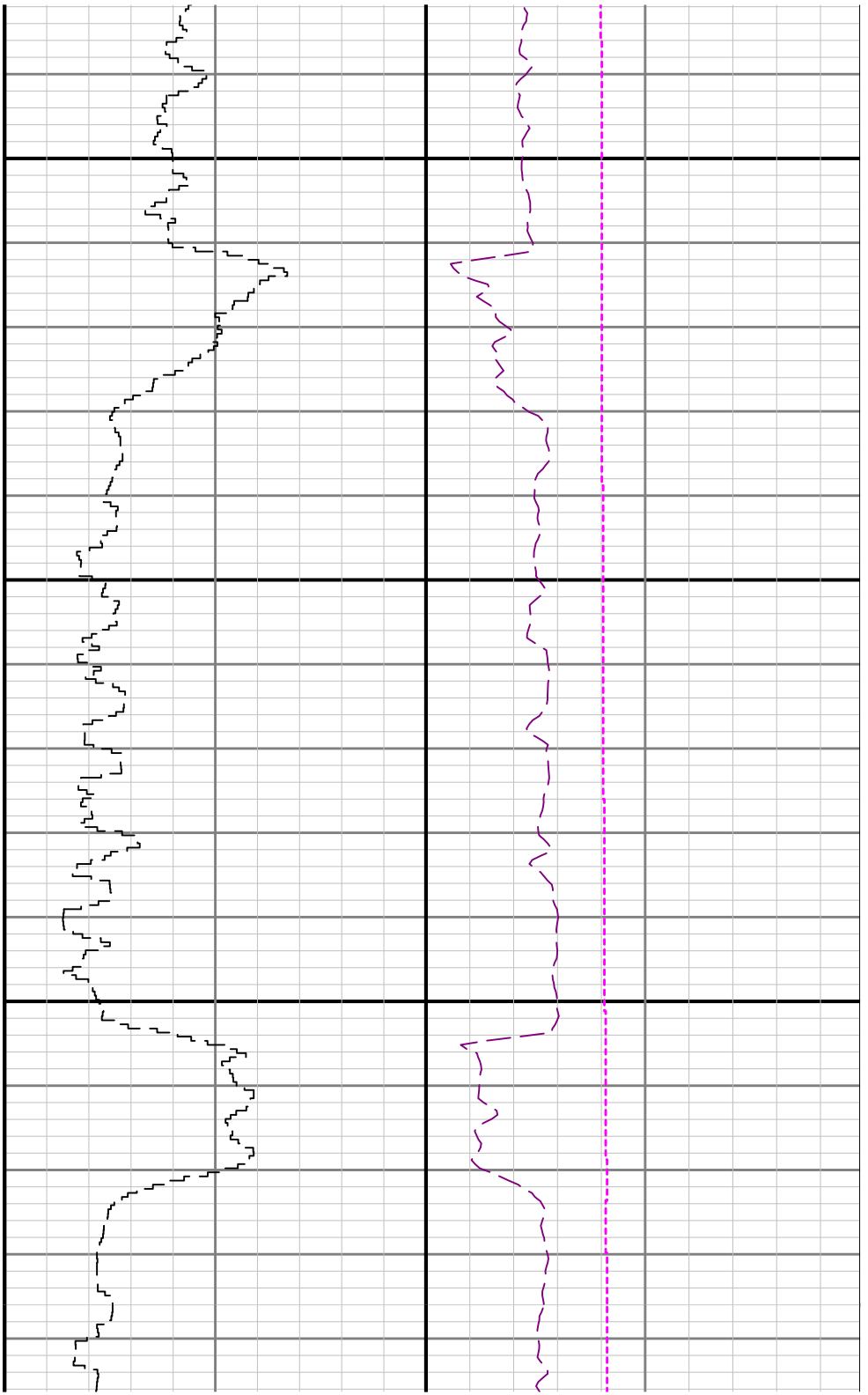
2300

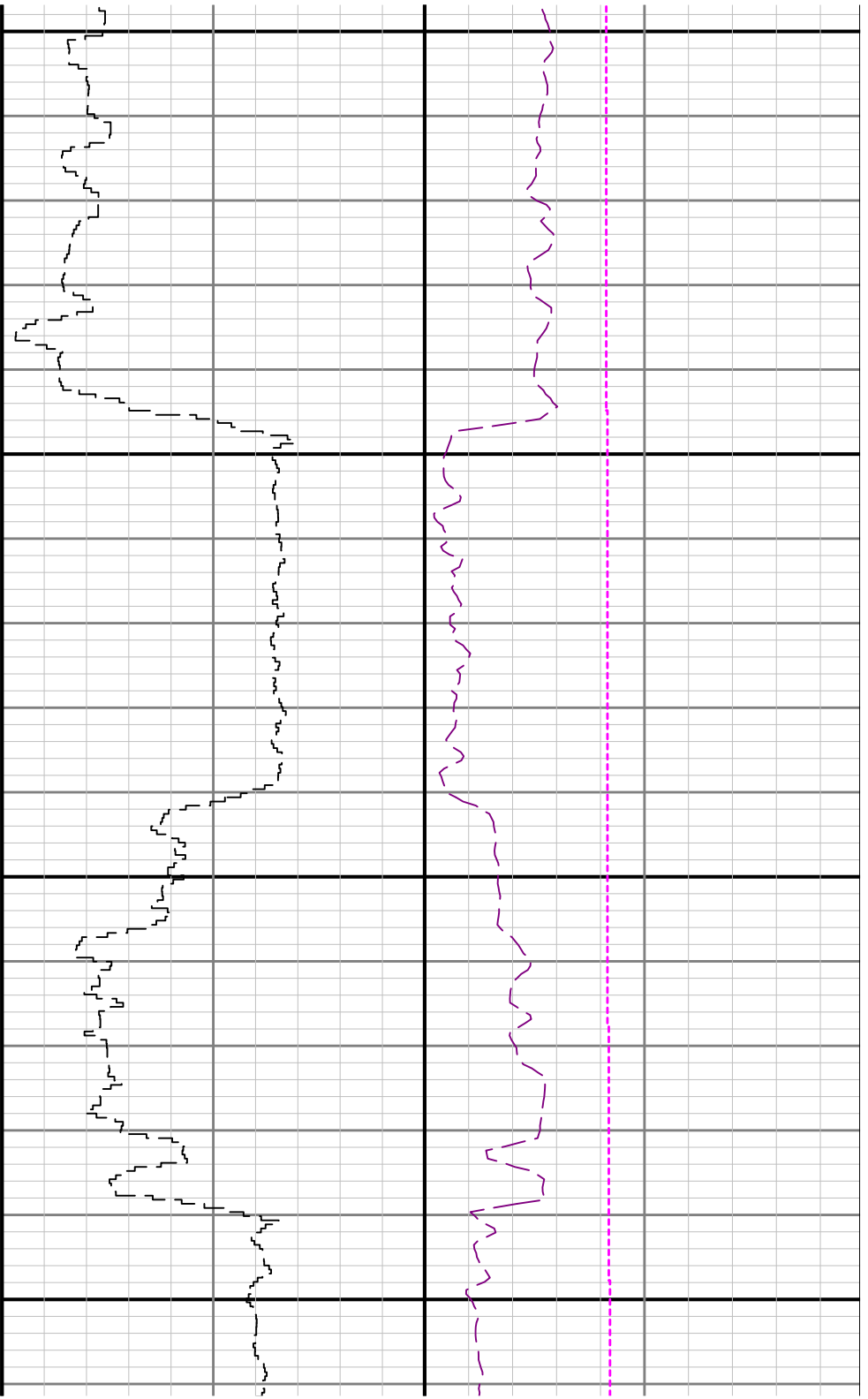






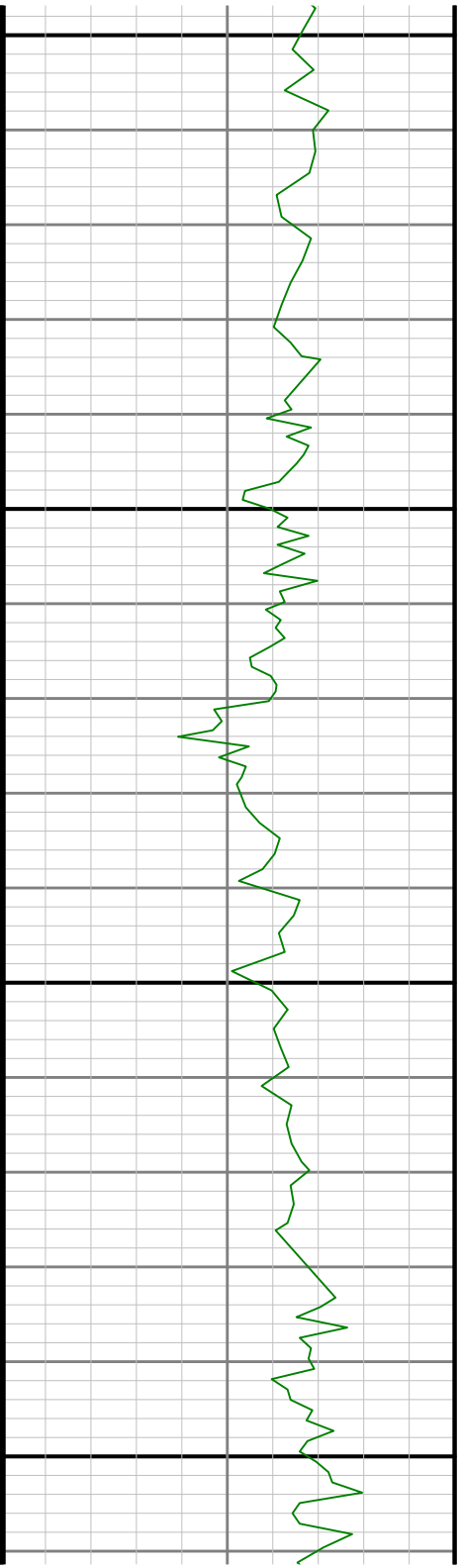
2600

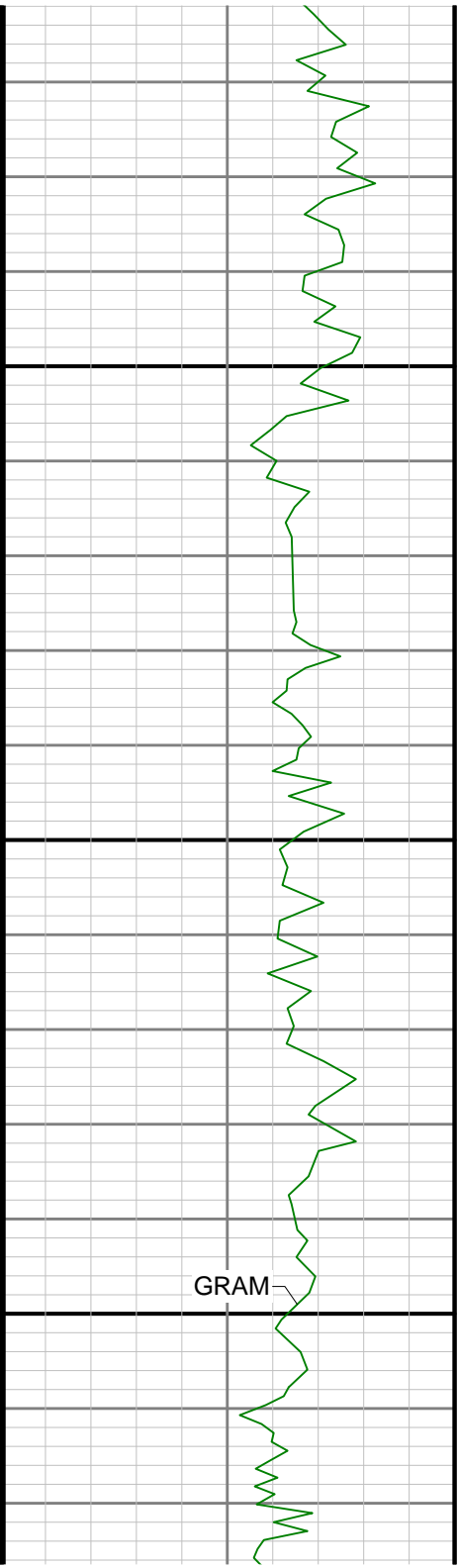




2700

2800

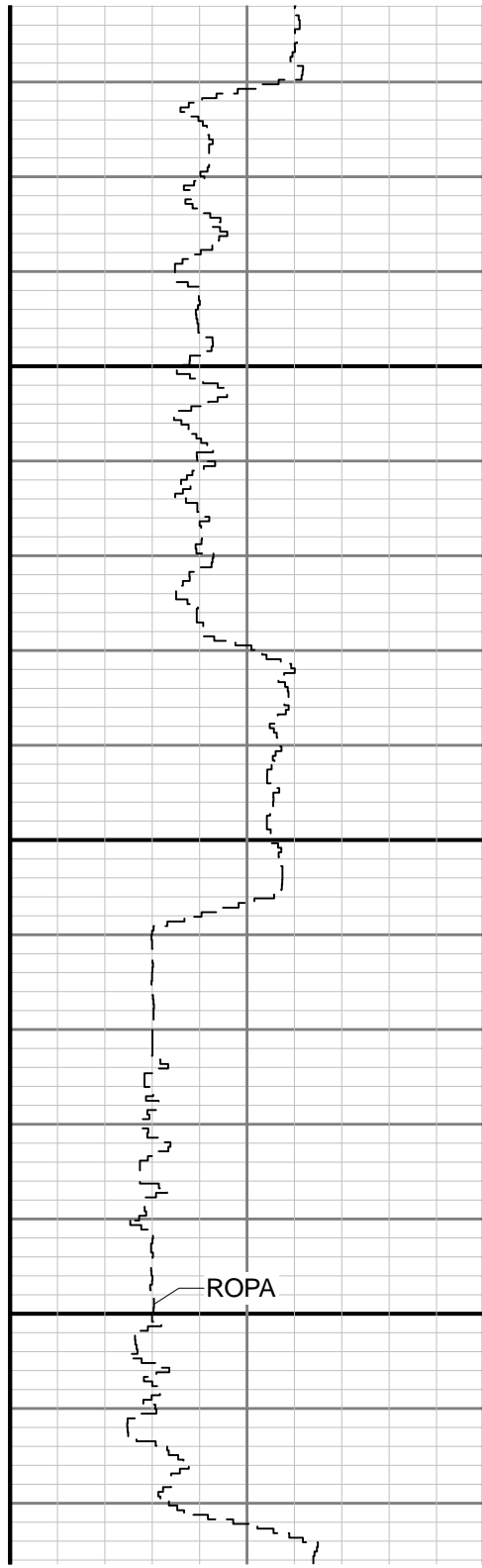




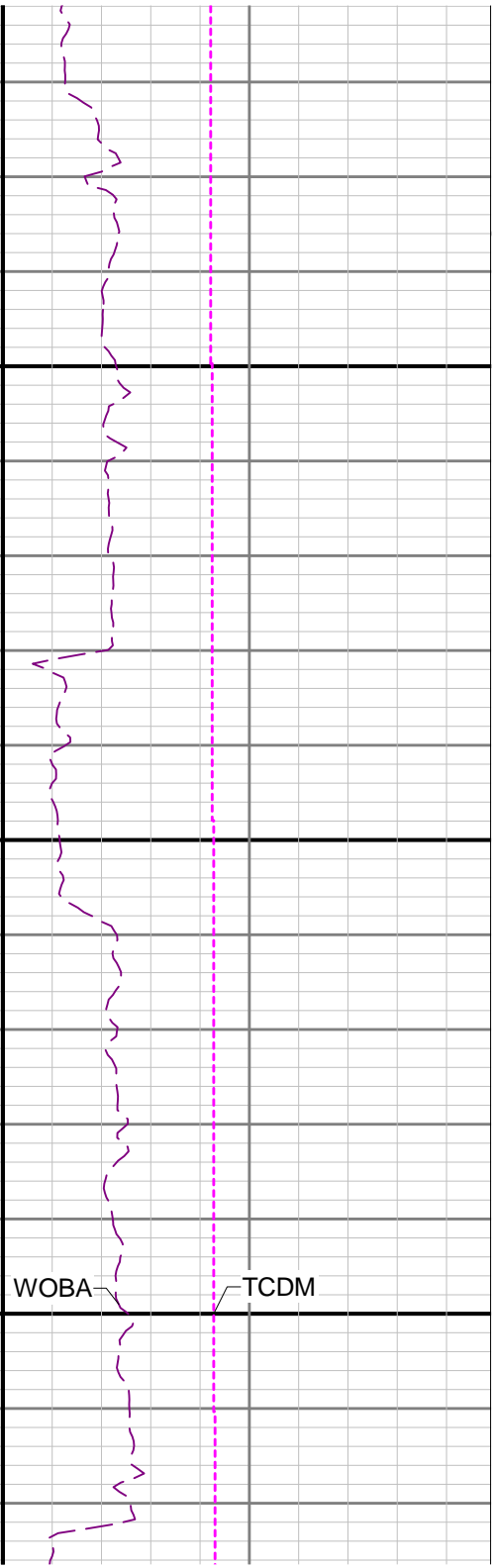
2900

3000

GRAM



ROPA

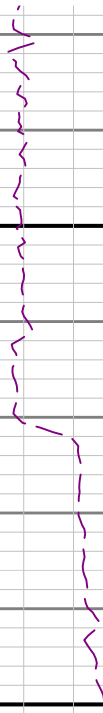
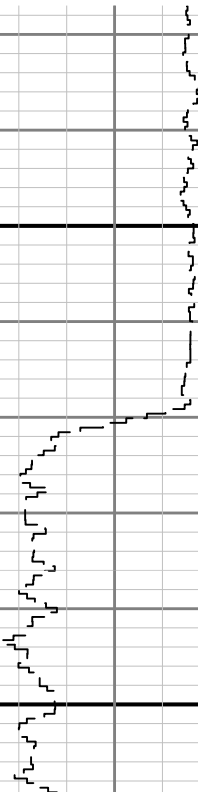


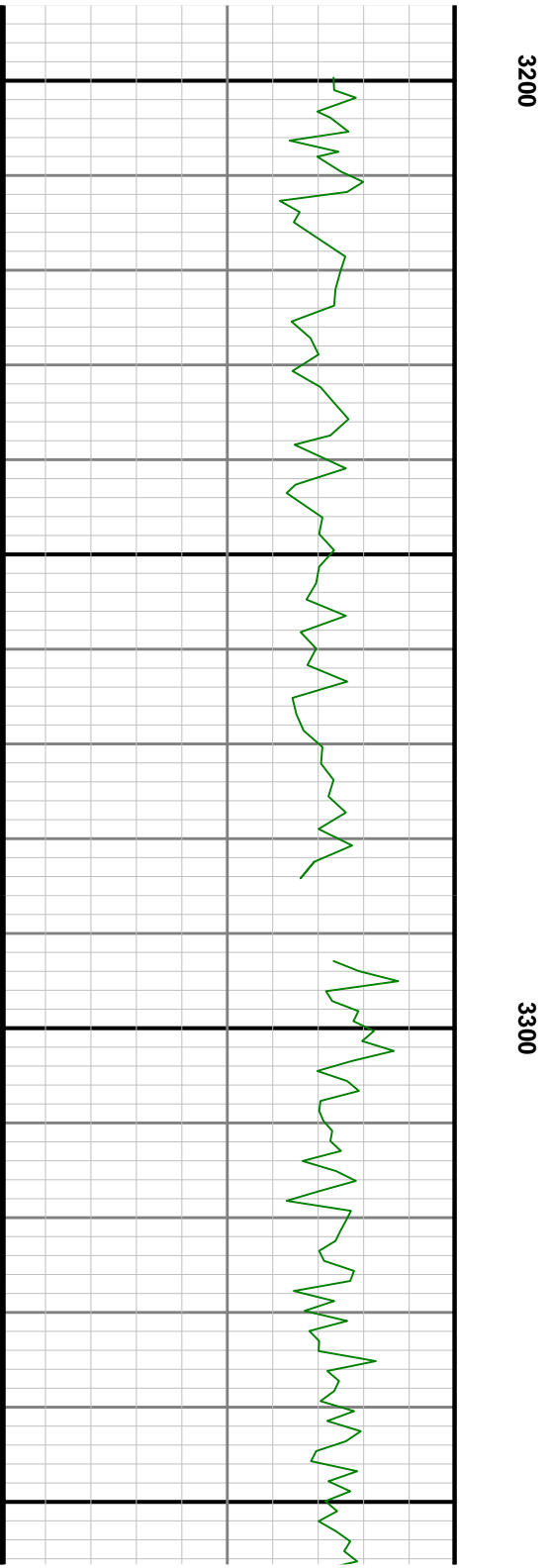
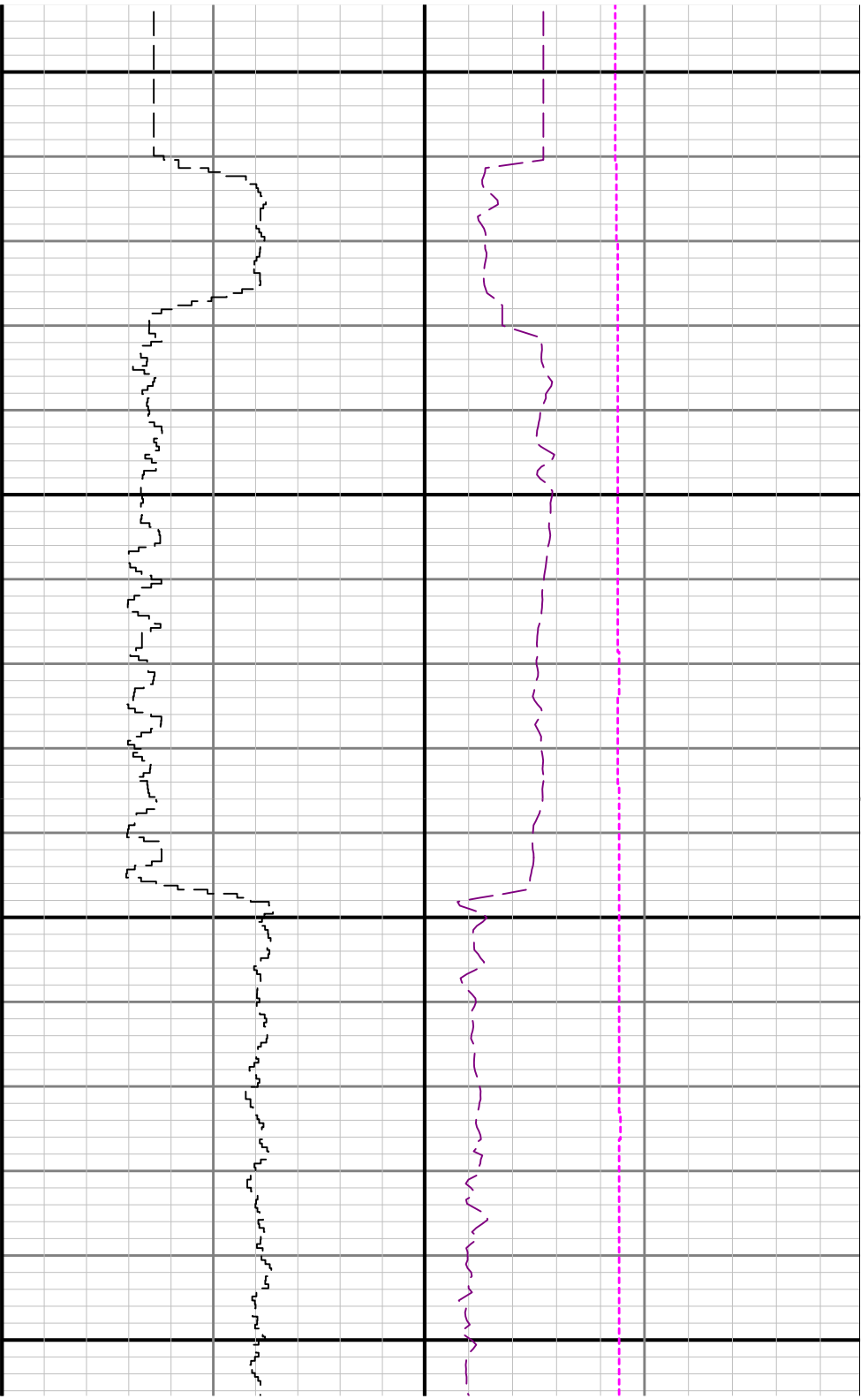
WOBA

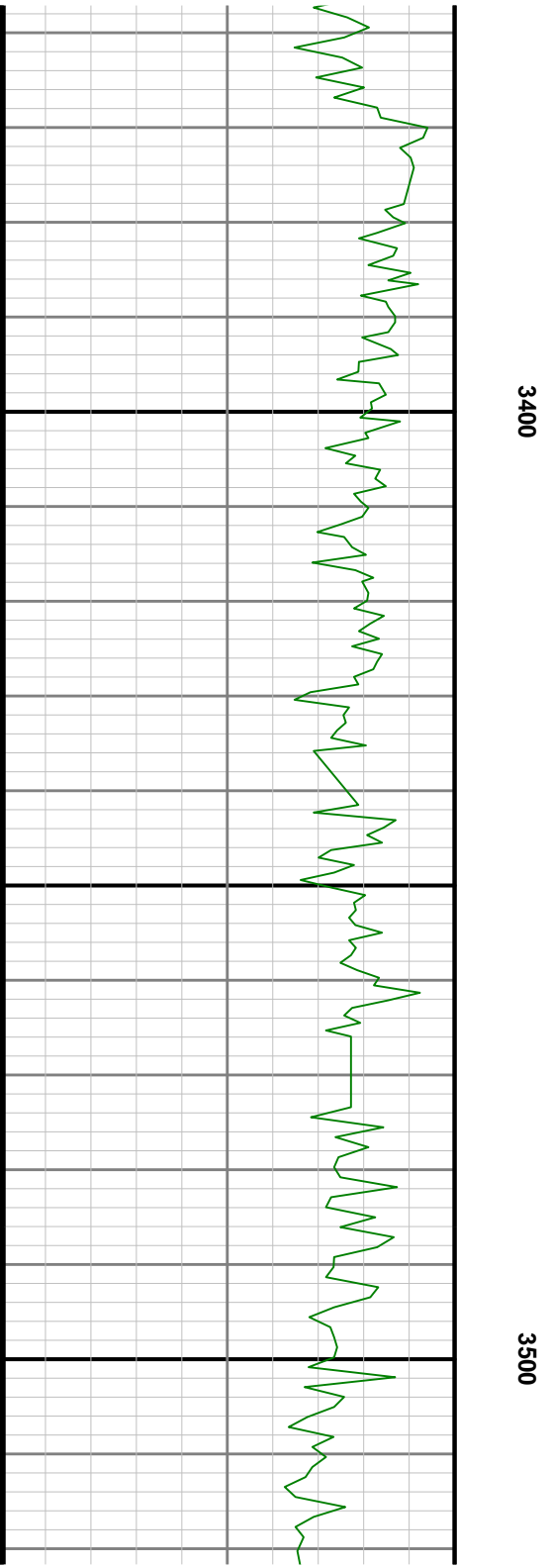
TCDM

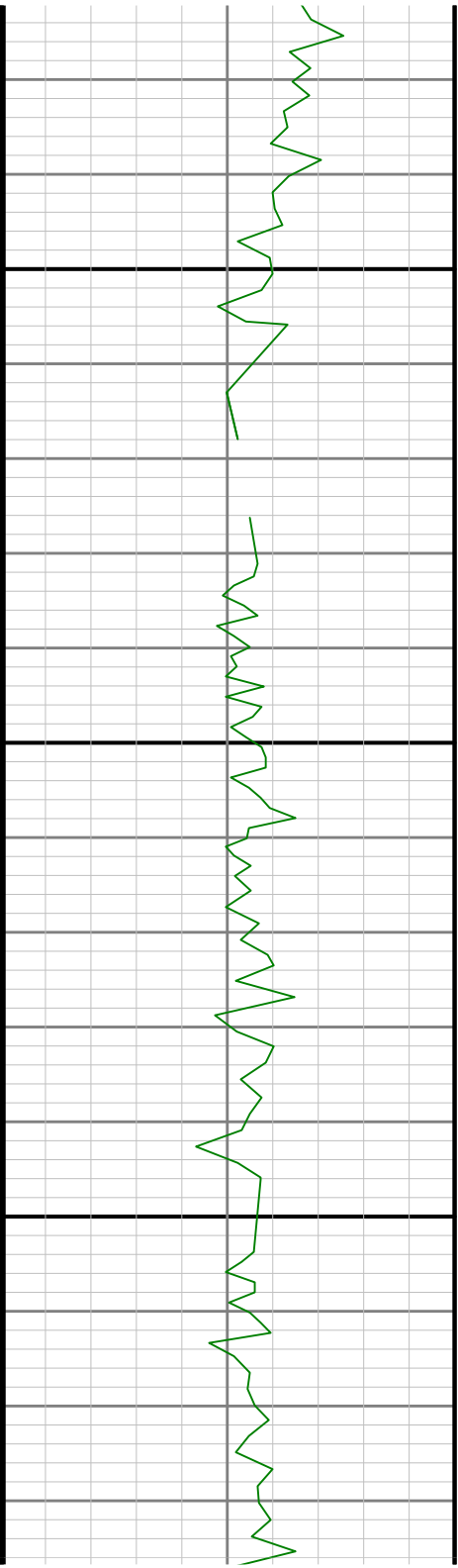
3100

See Remark 3

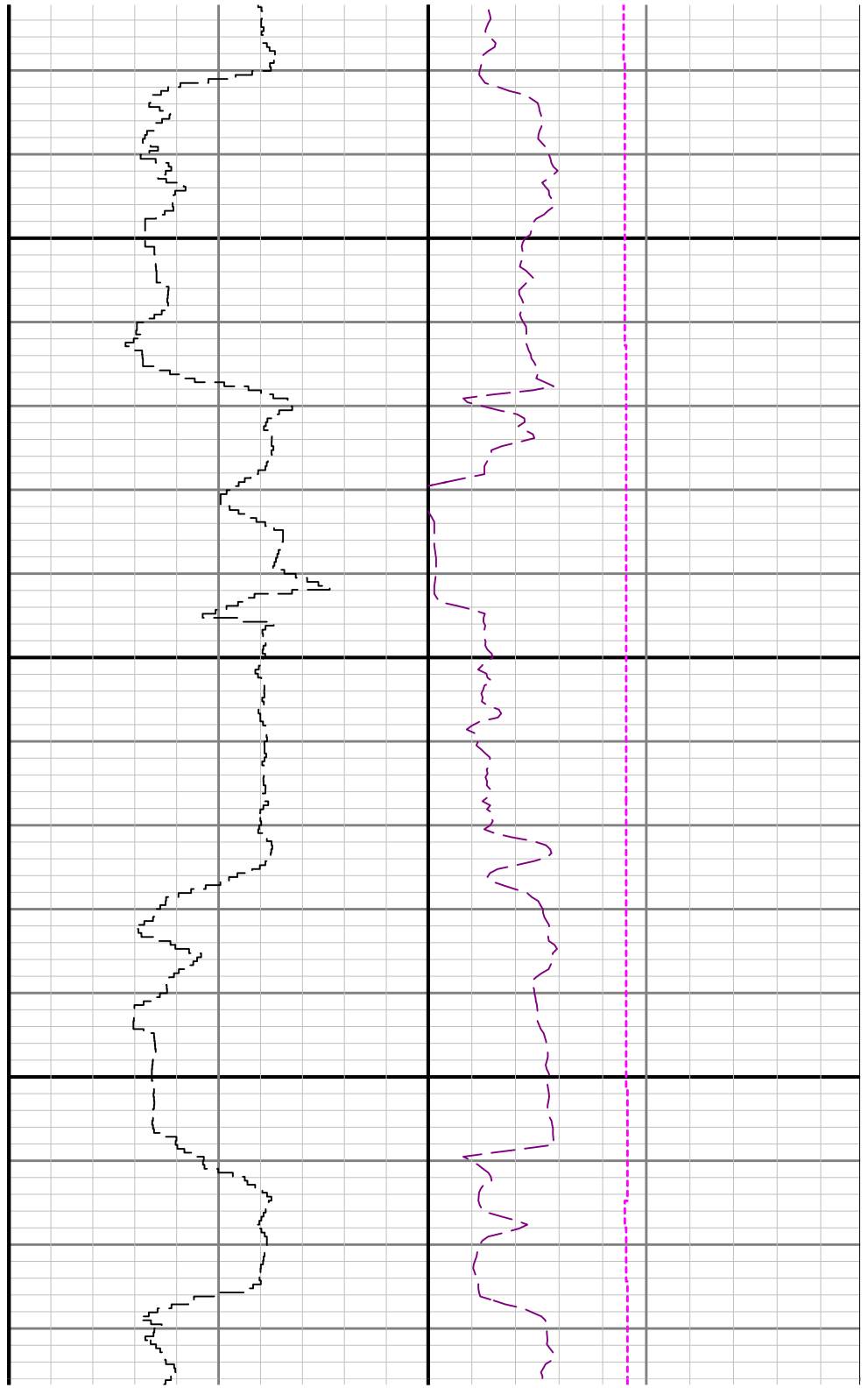


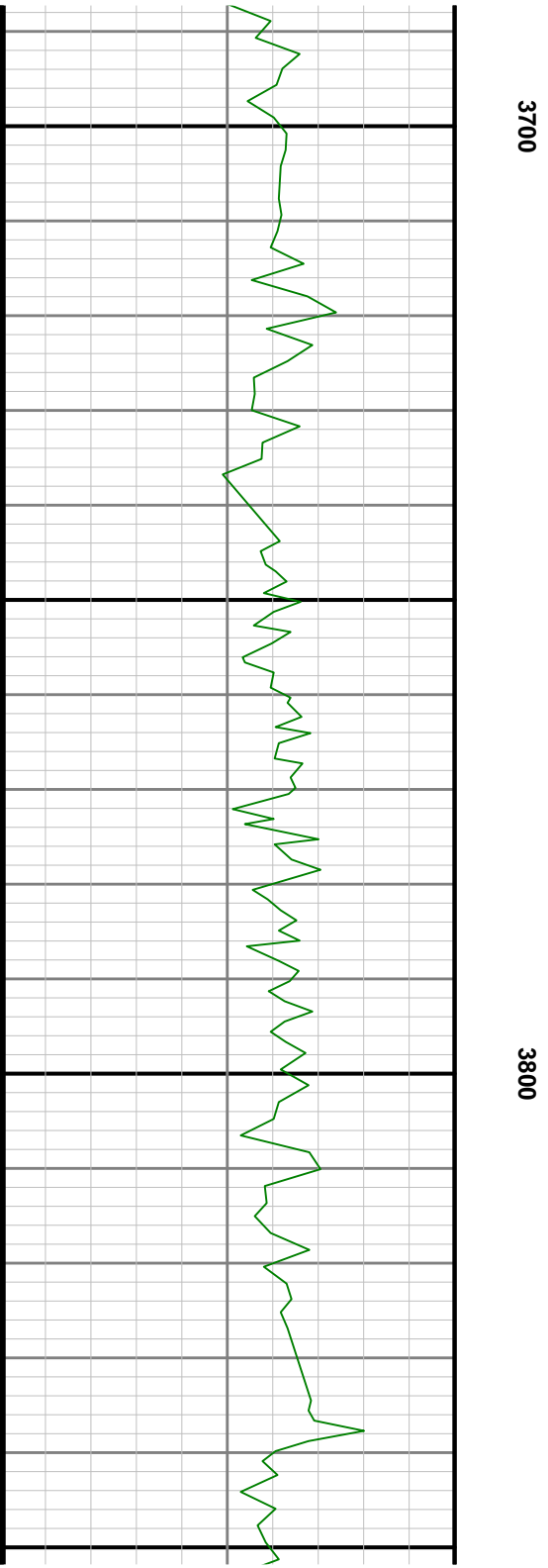
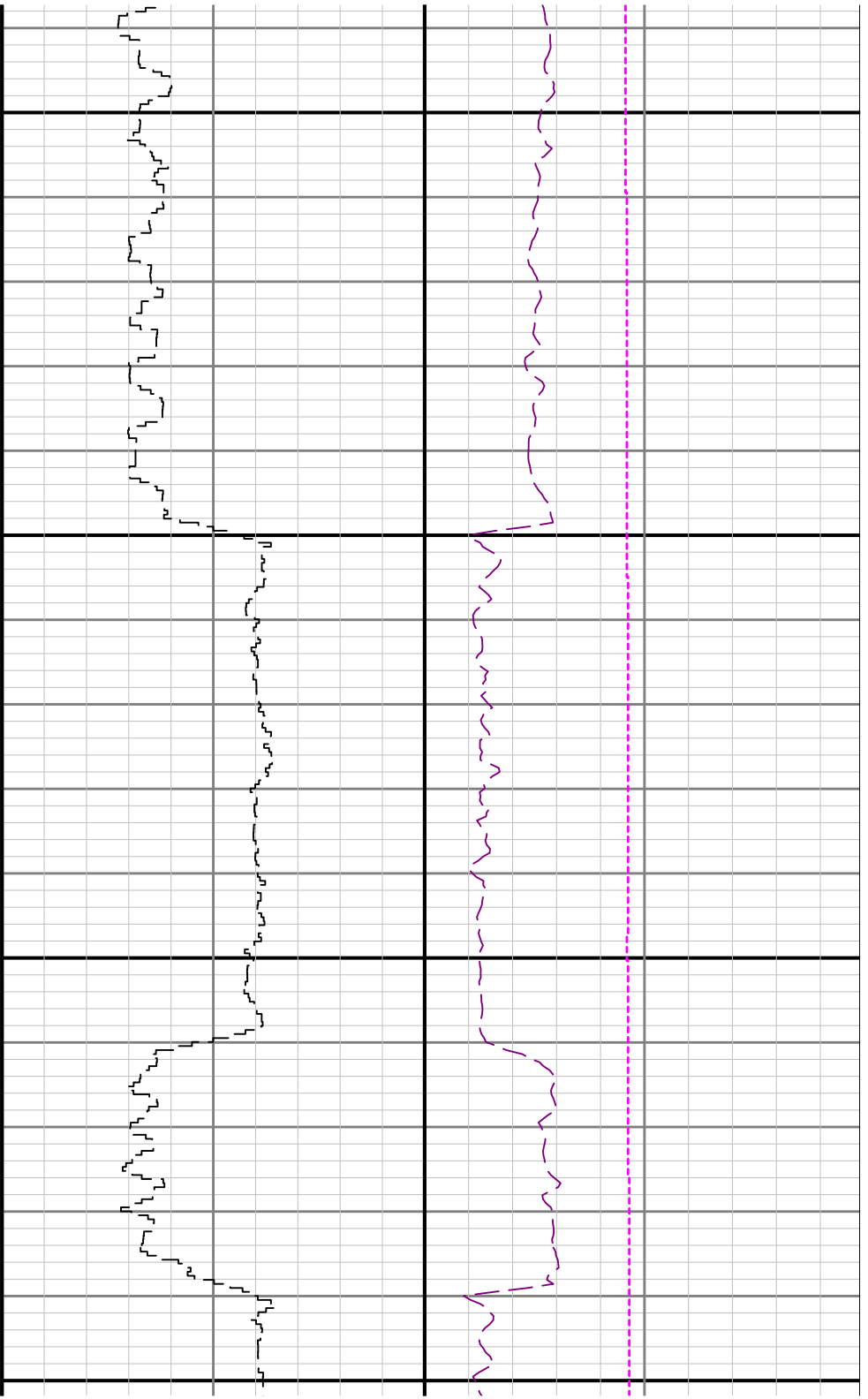






3600



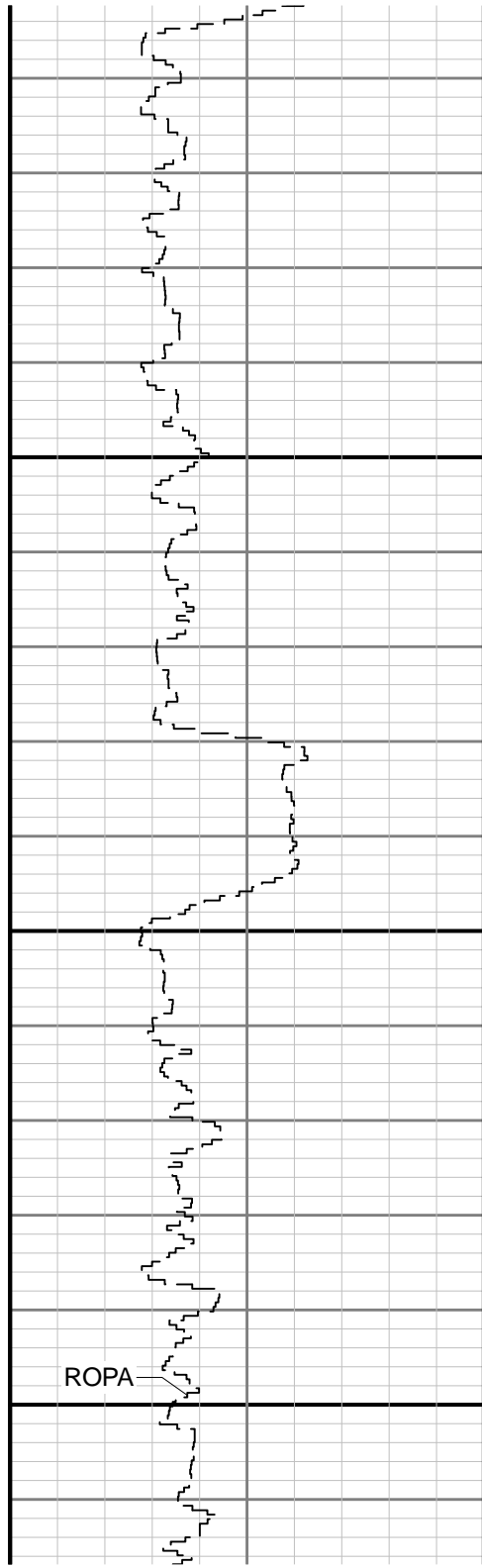




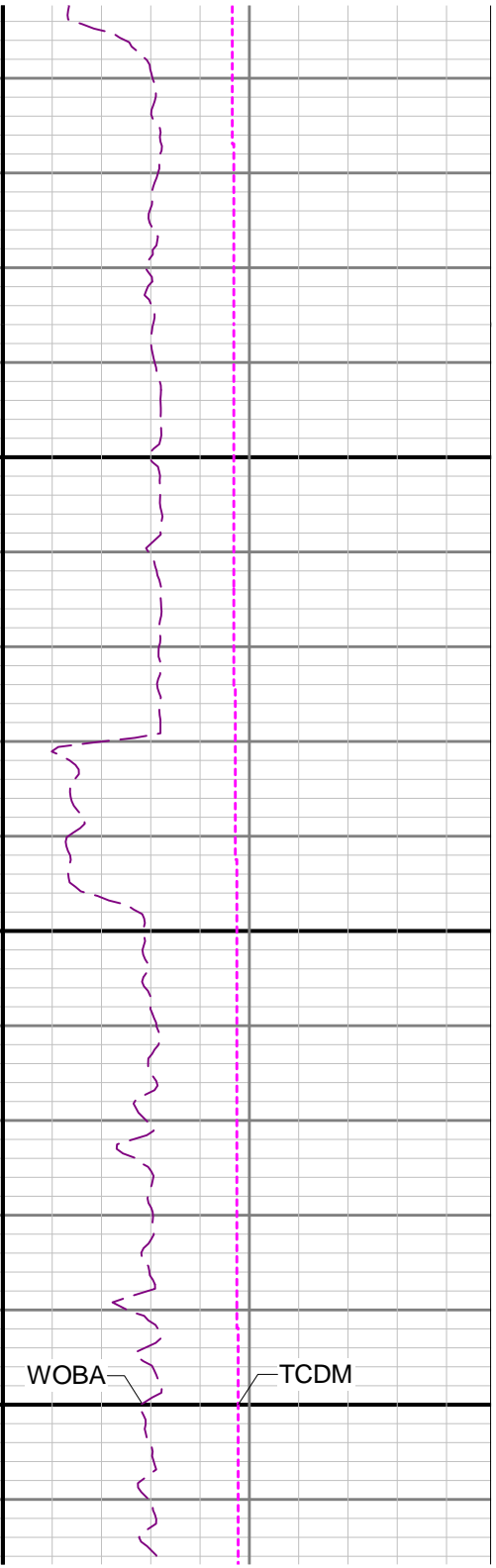
3900

4000

GRAM

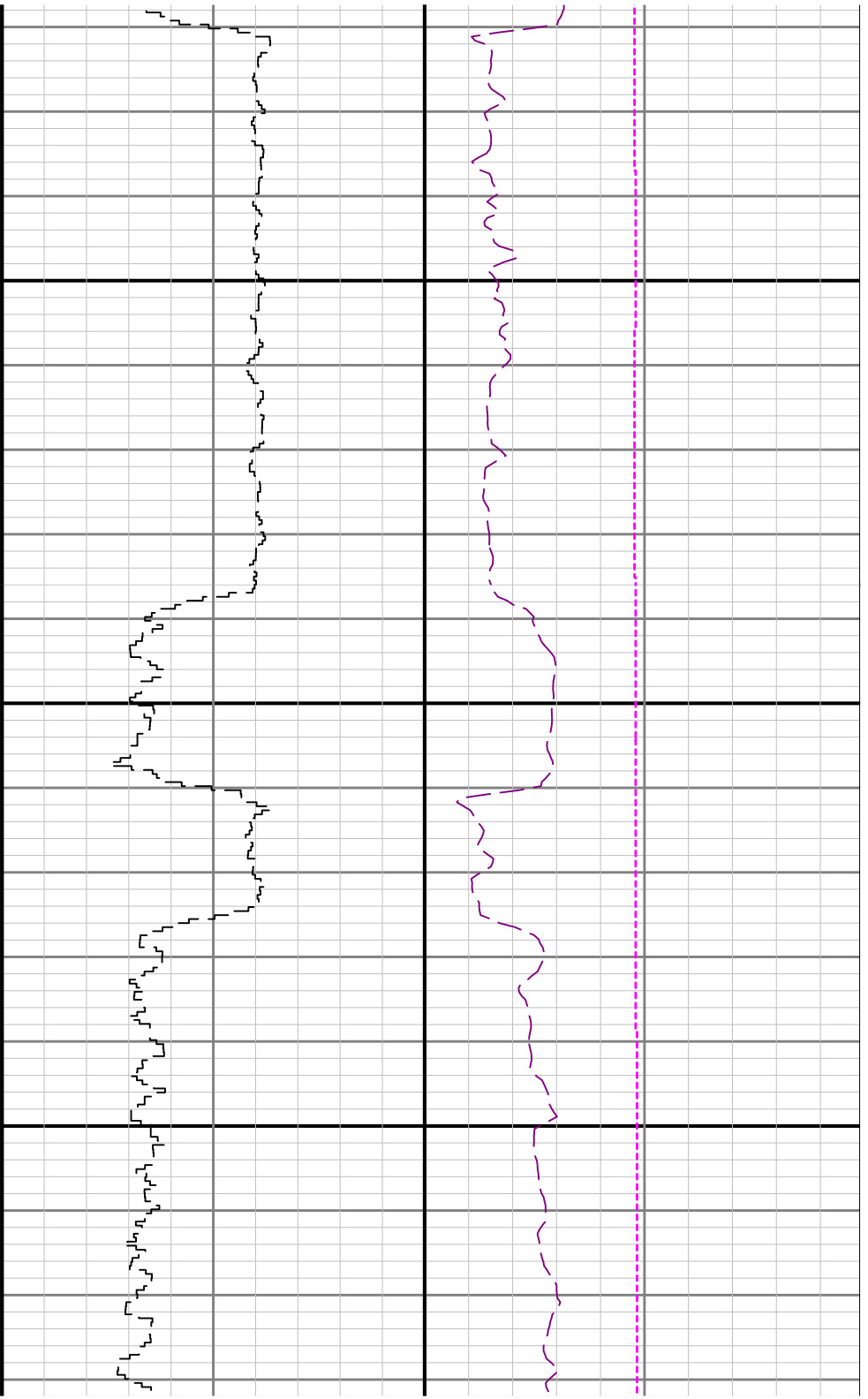


ROPA

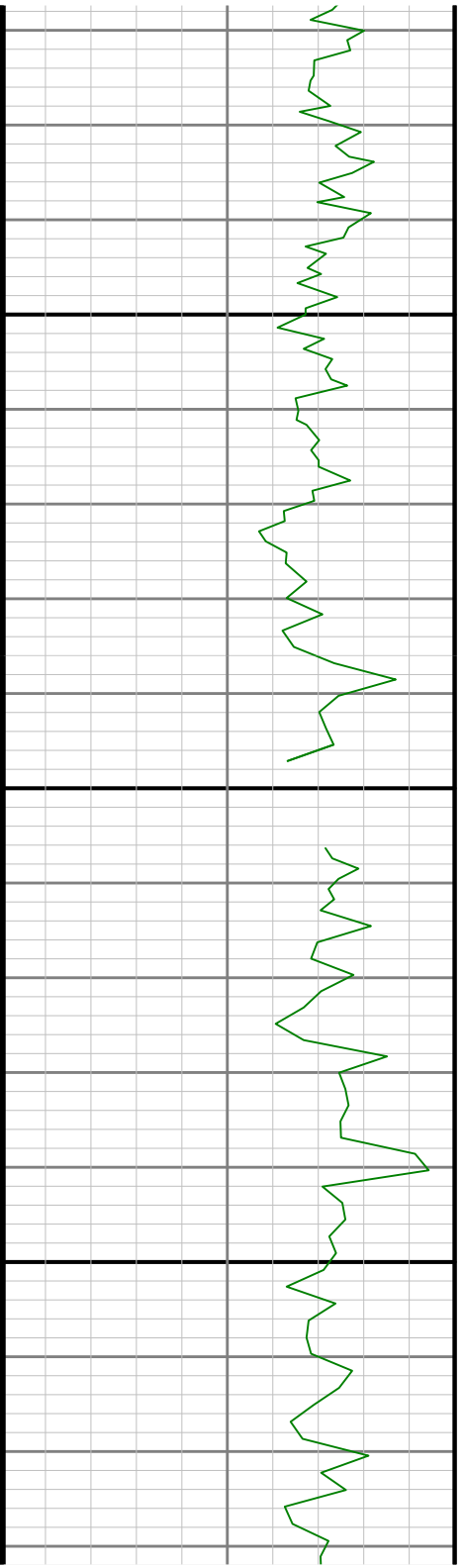


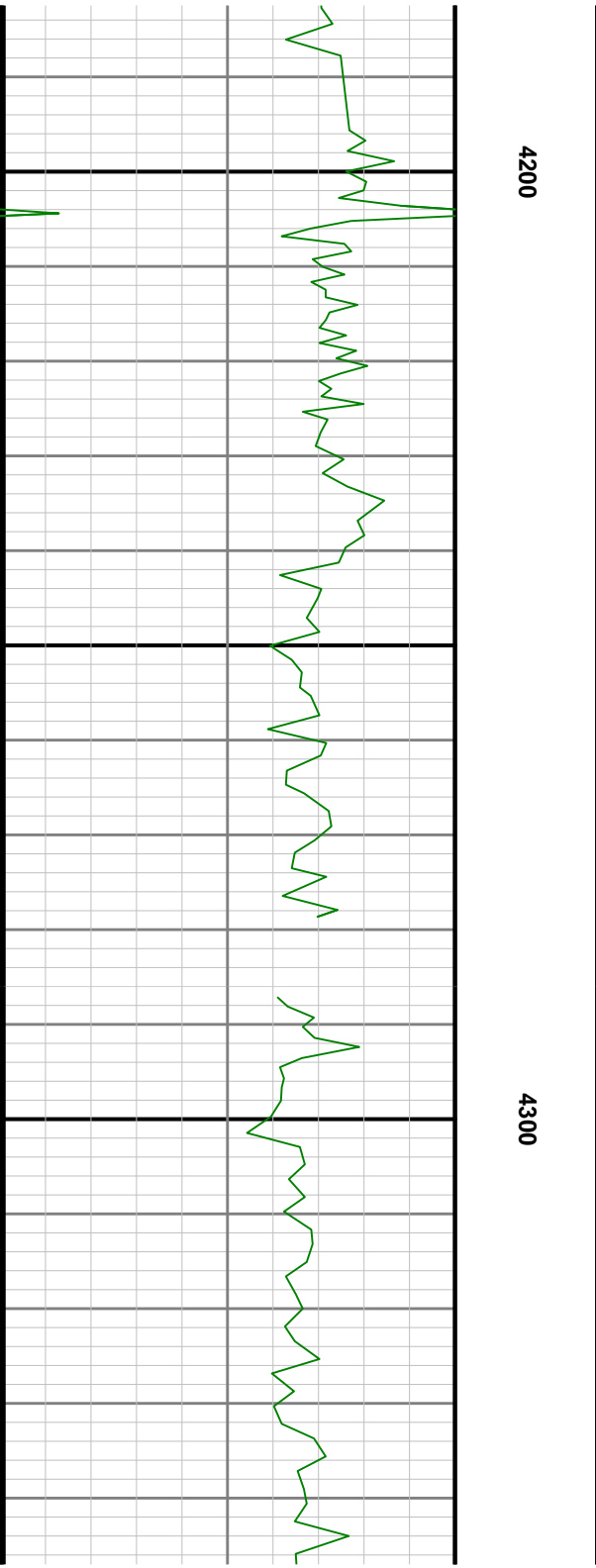
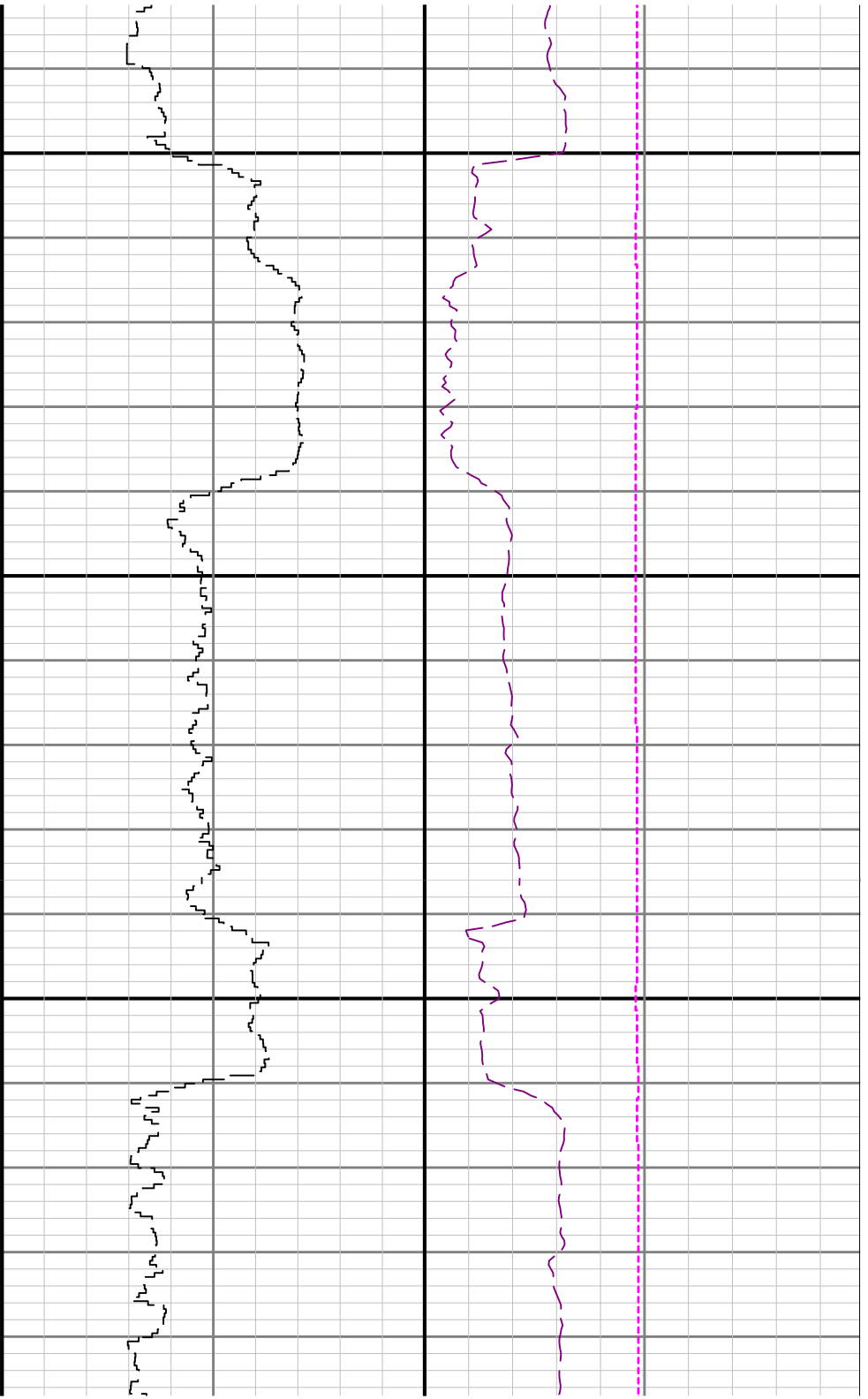
WOBA

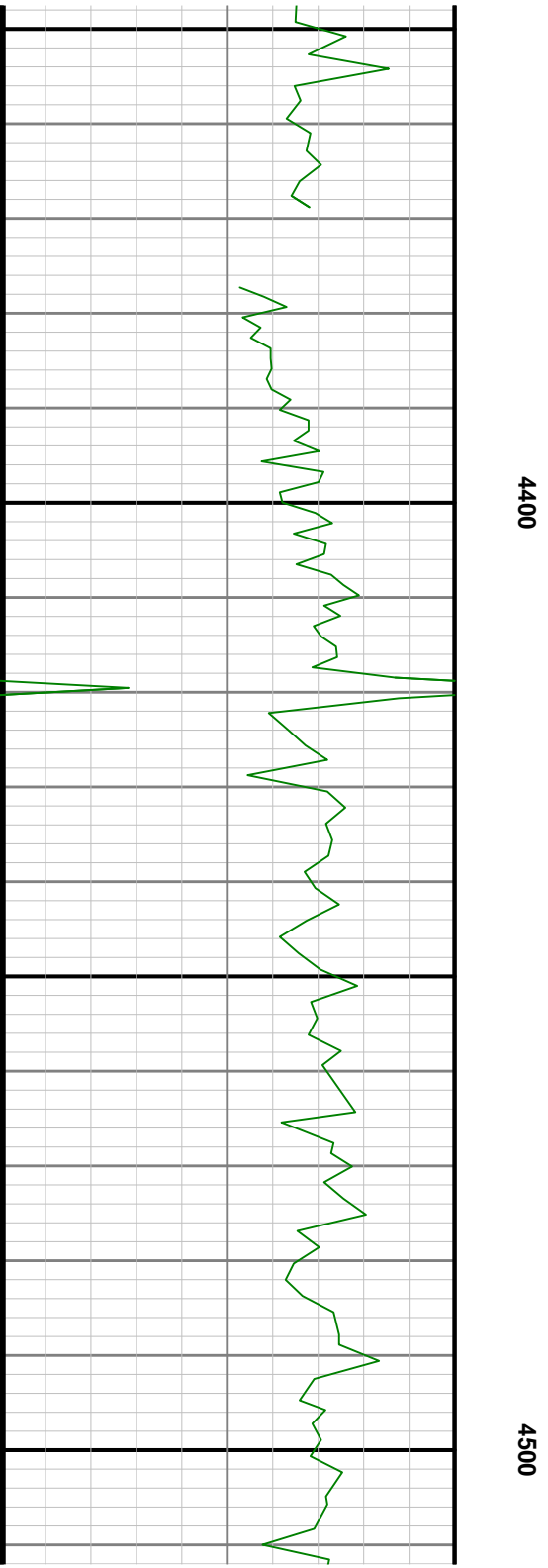
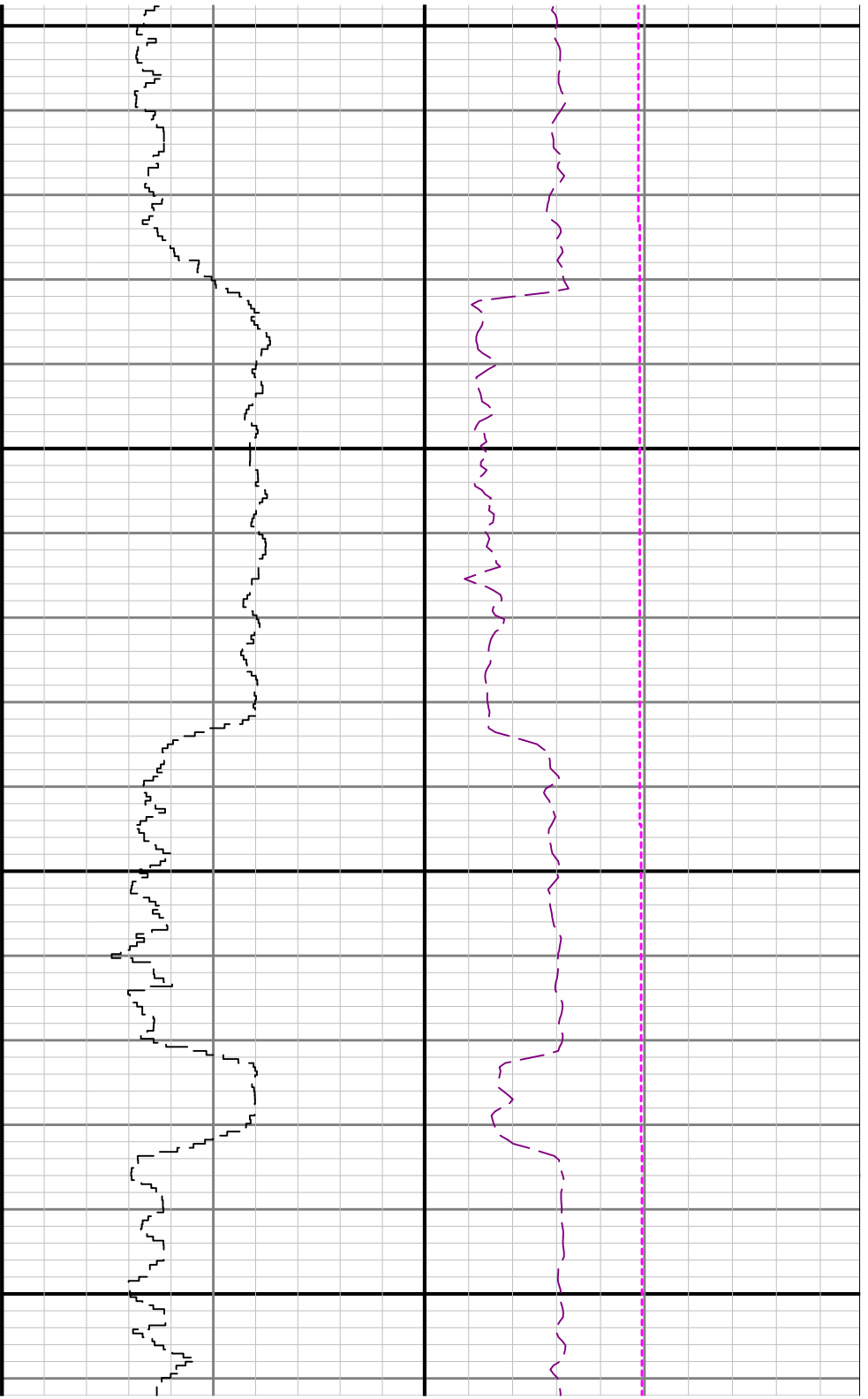
TCDM

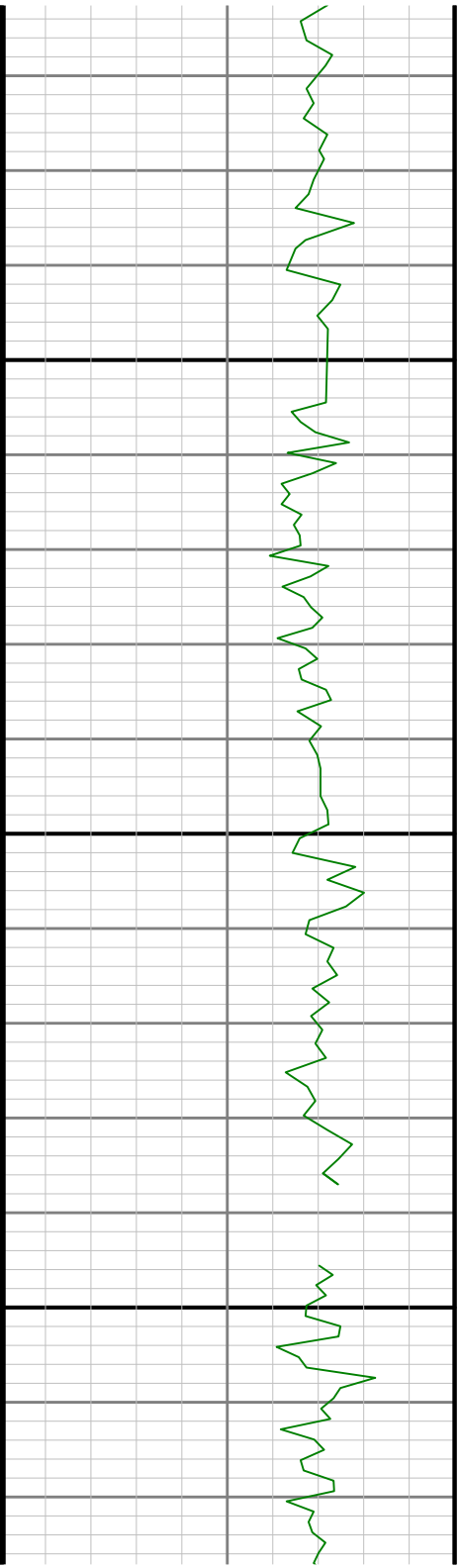


4100

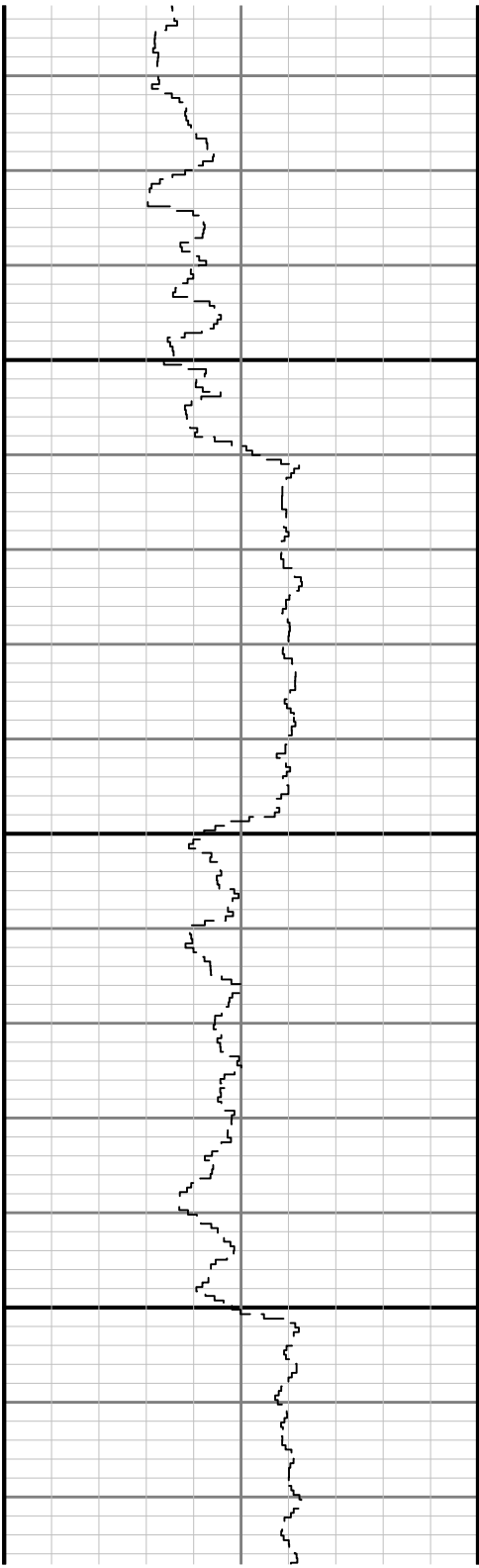


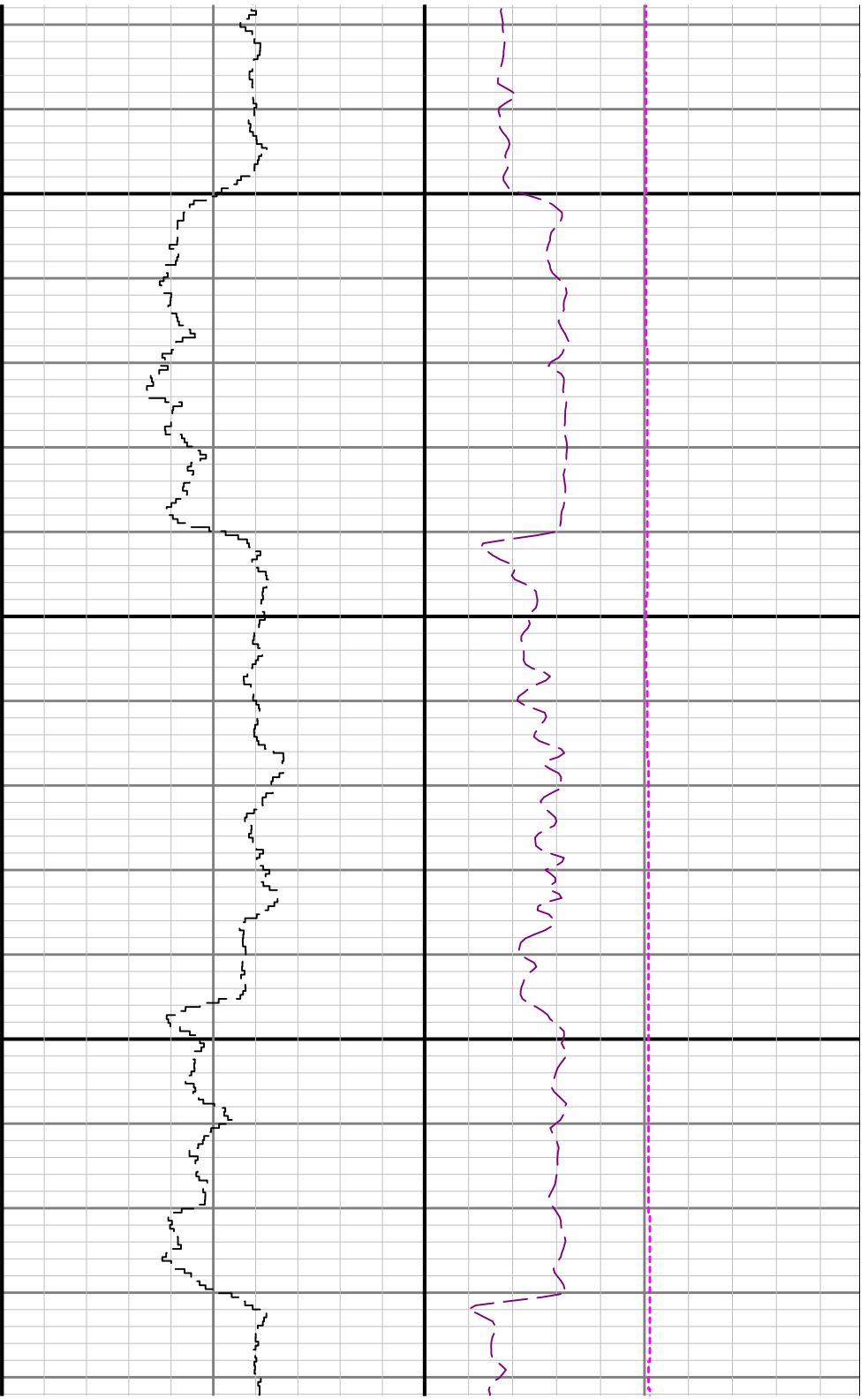






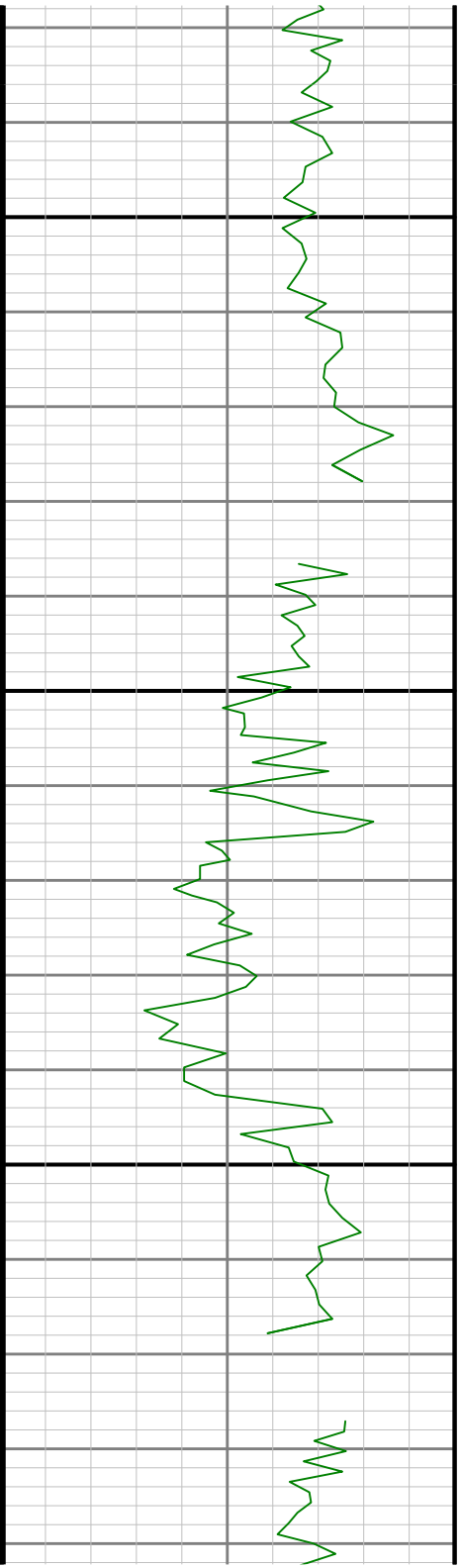
4600

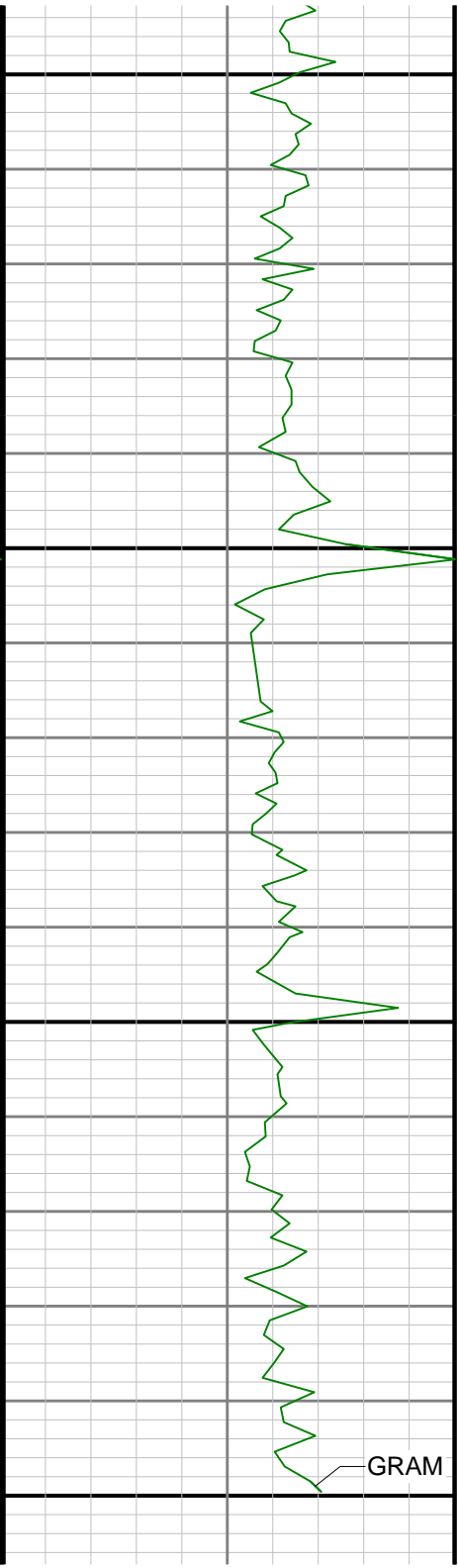




4700

4800

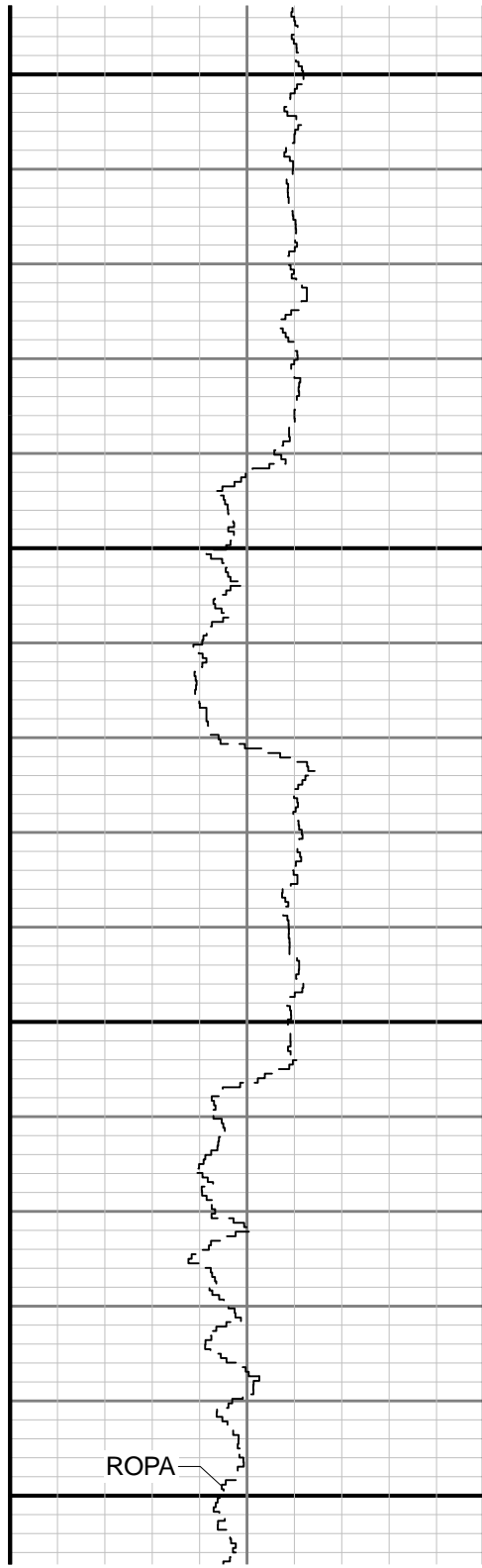




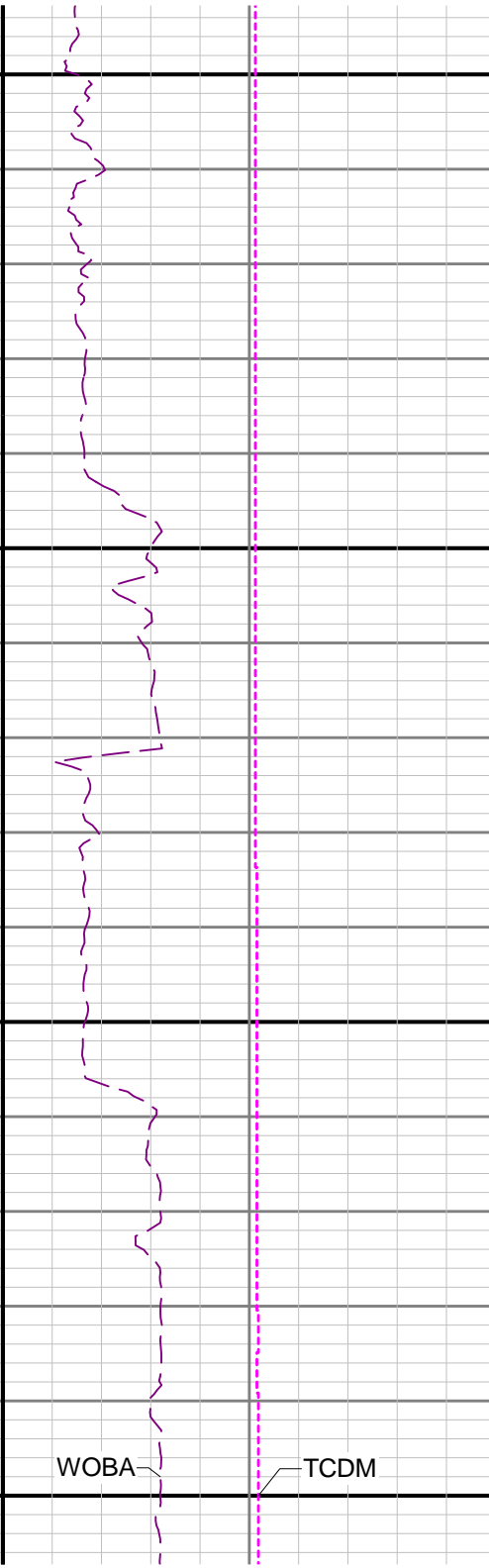
4900

5000

GRAM



ROPA

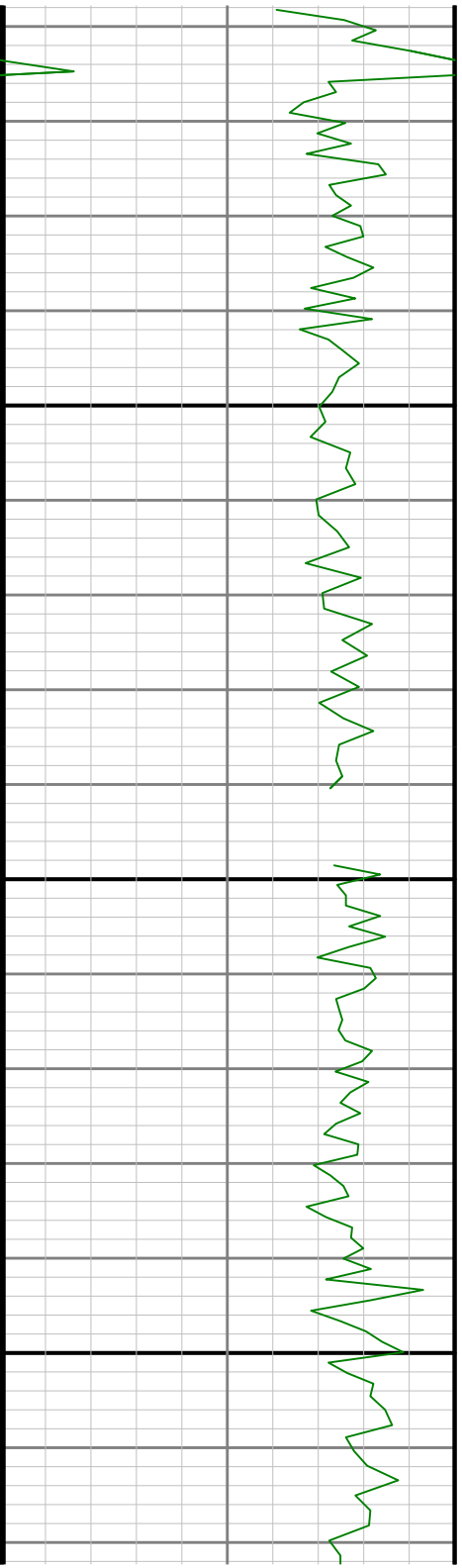


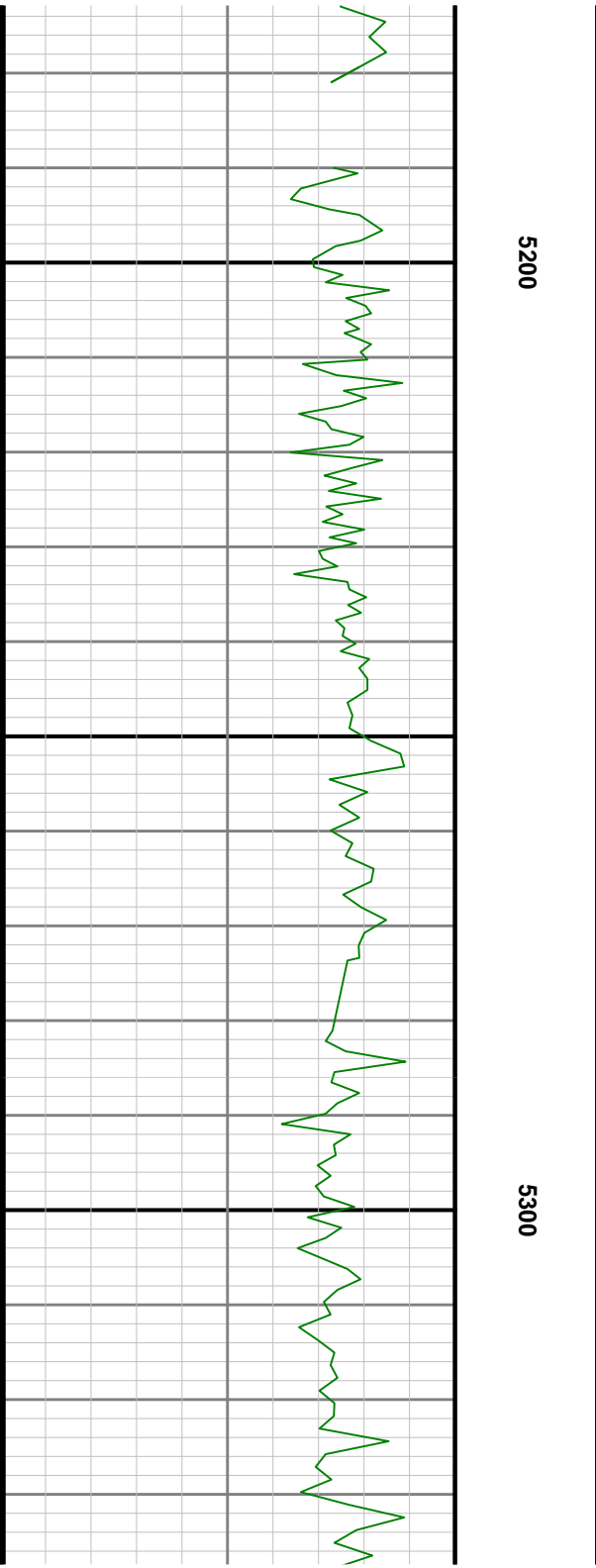
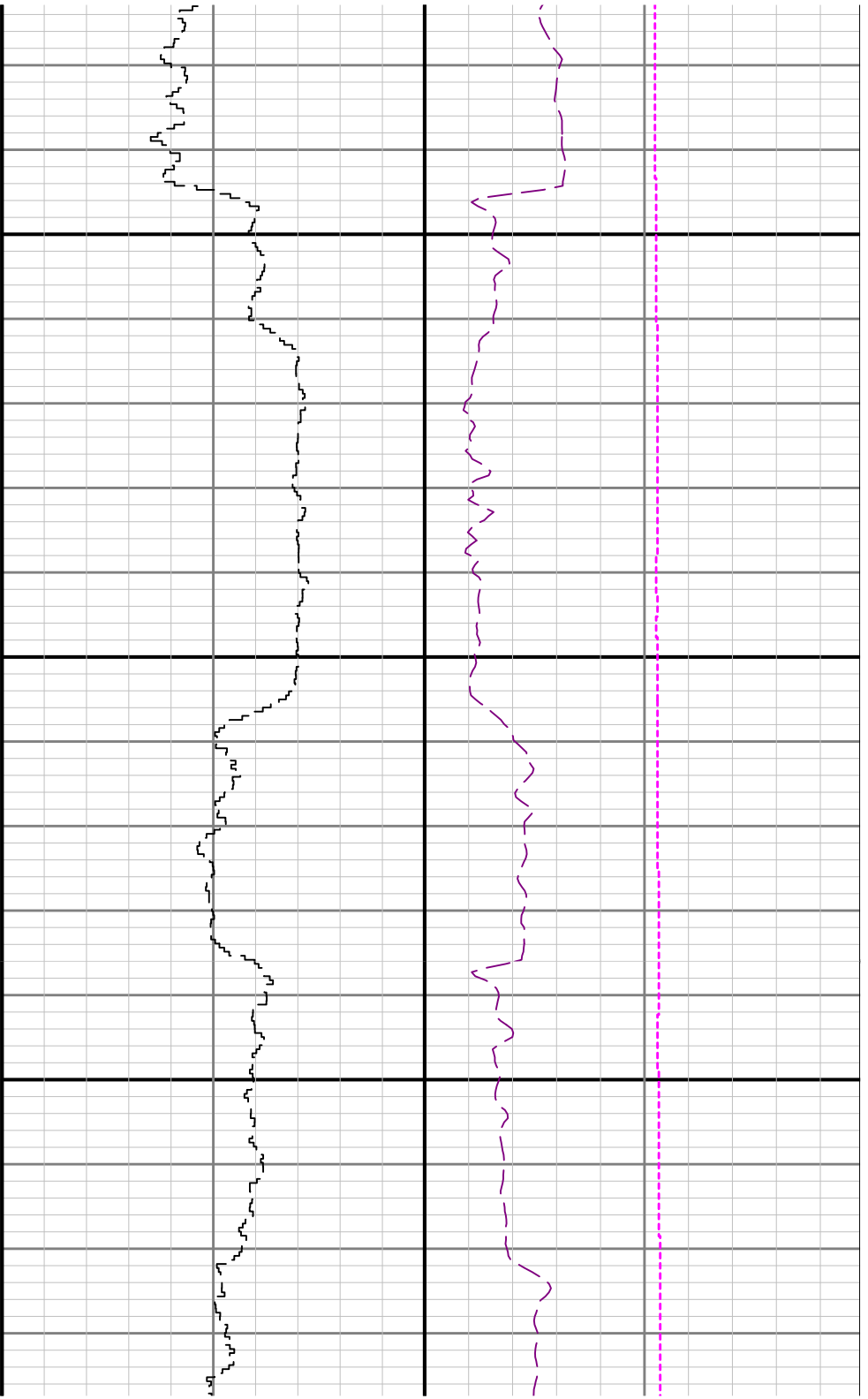
WOBA

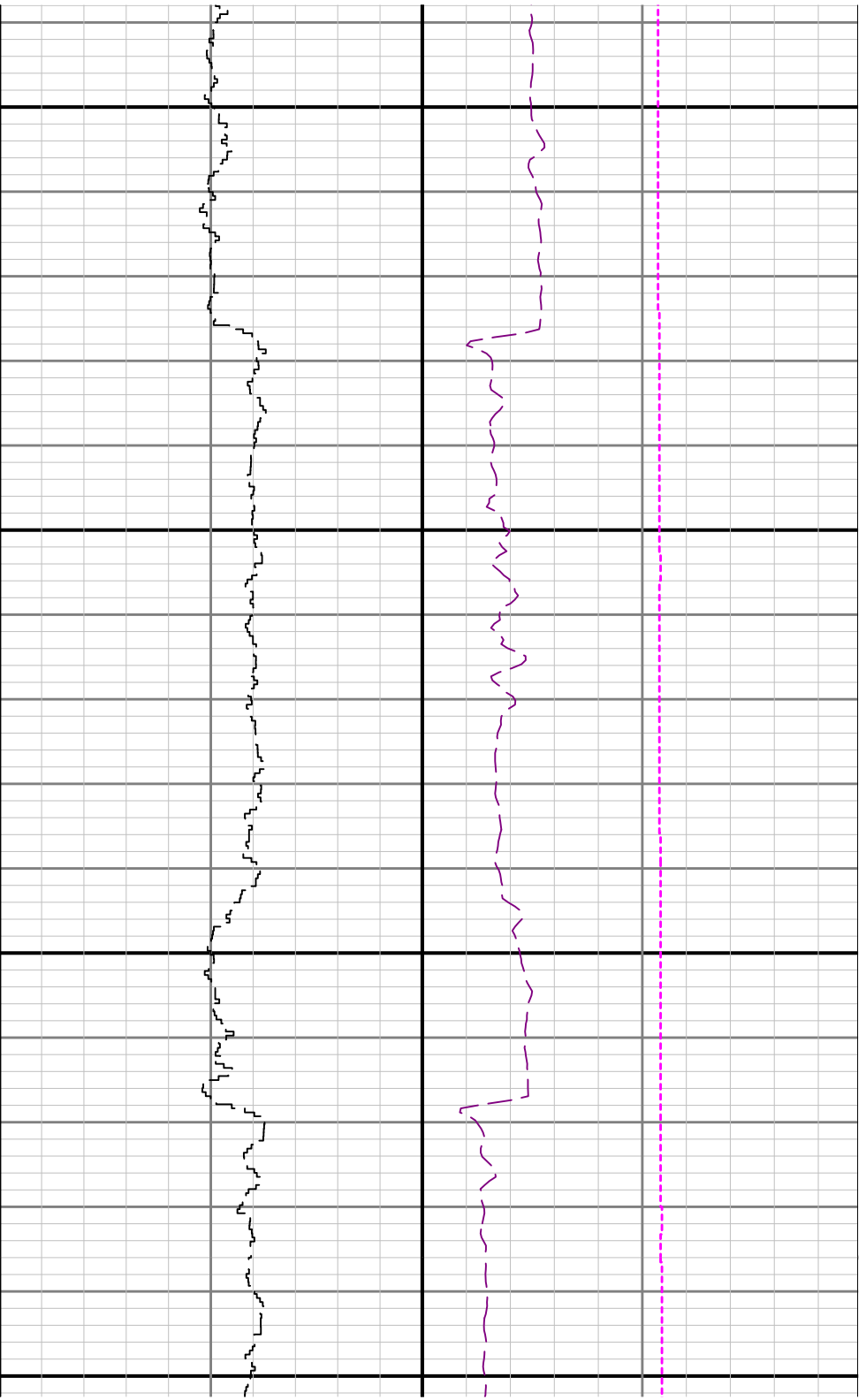
TCDM



5100

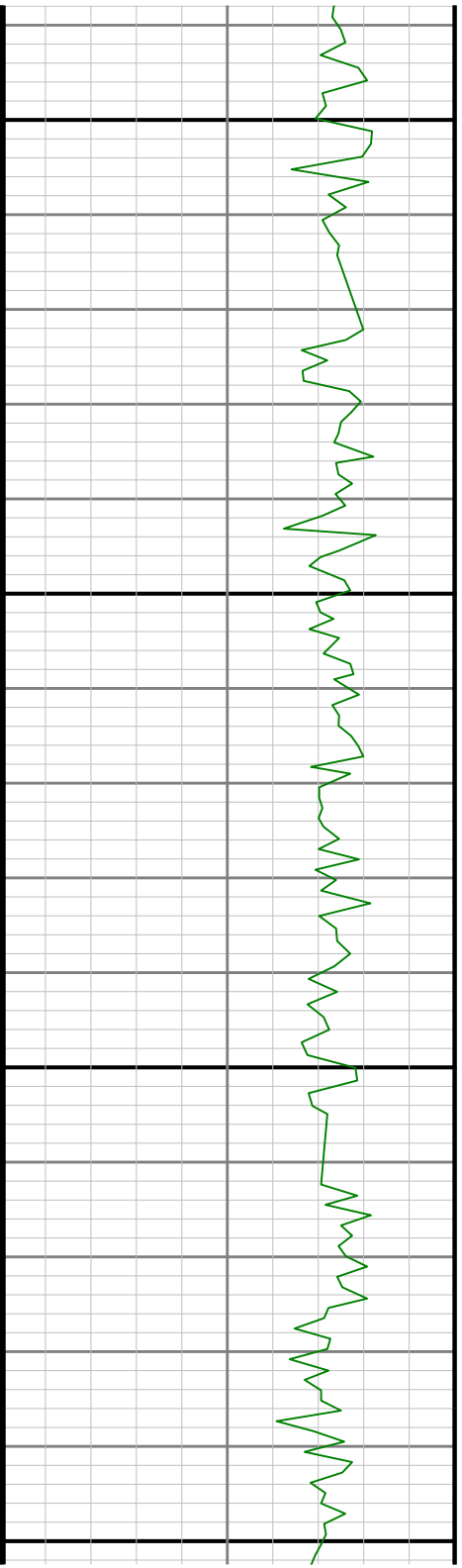


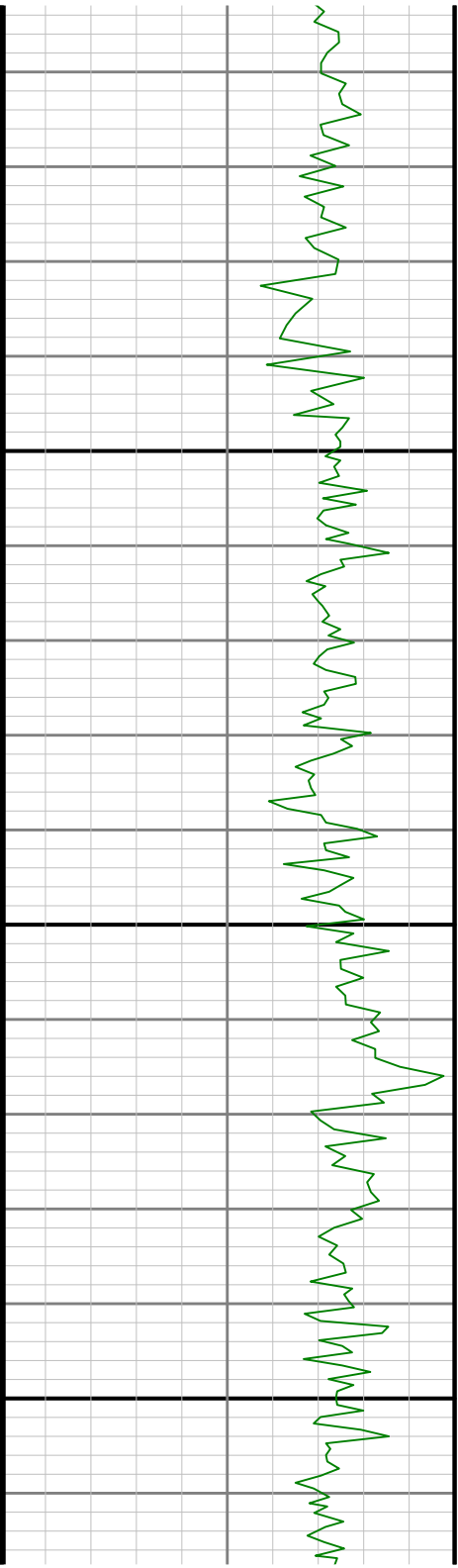




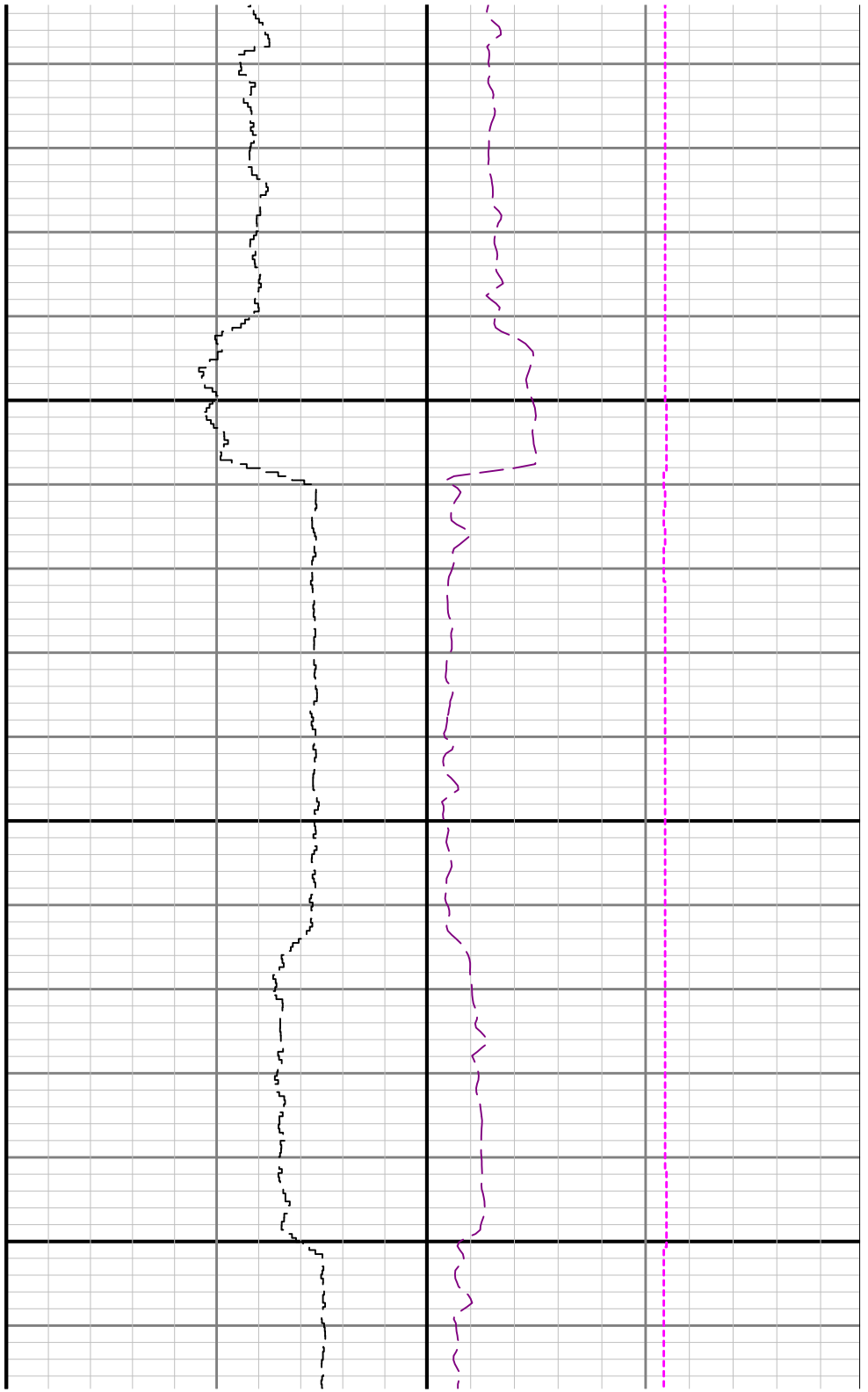
5400

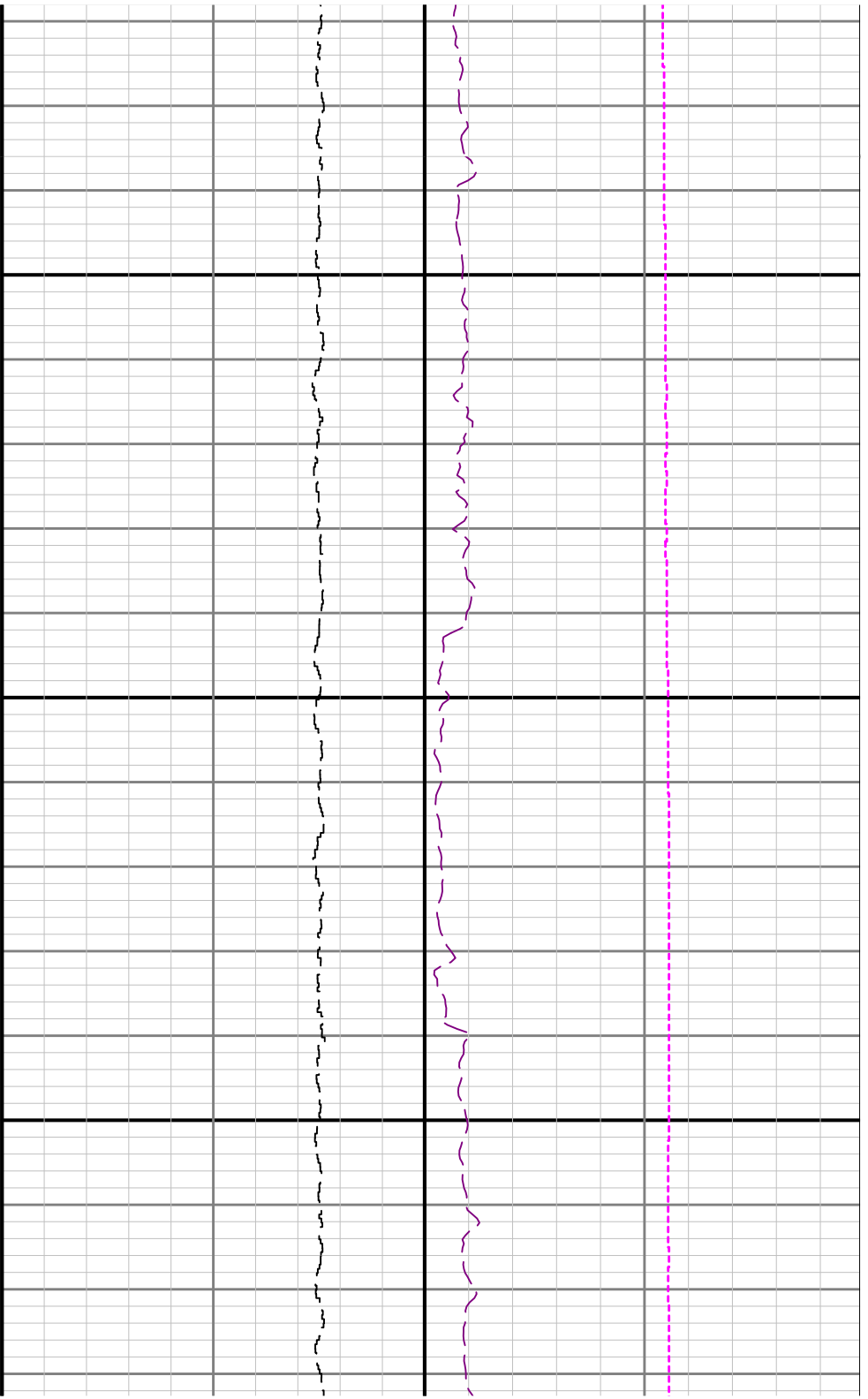
5500





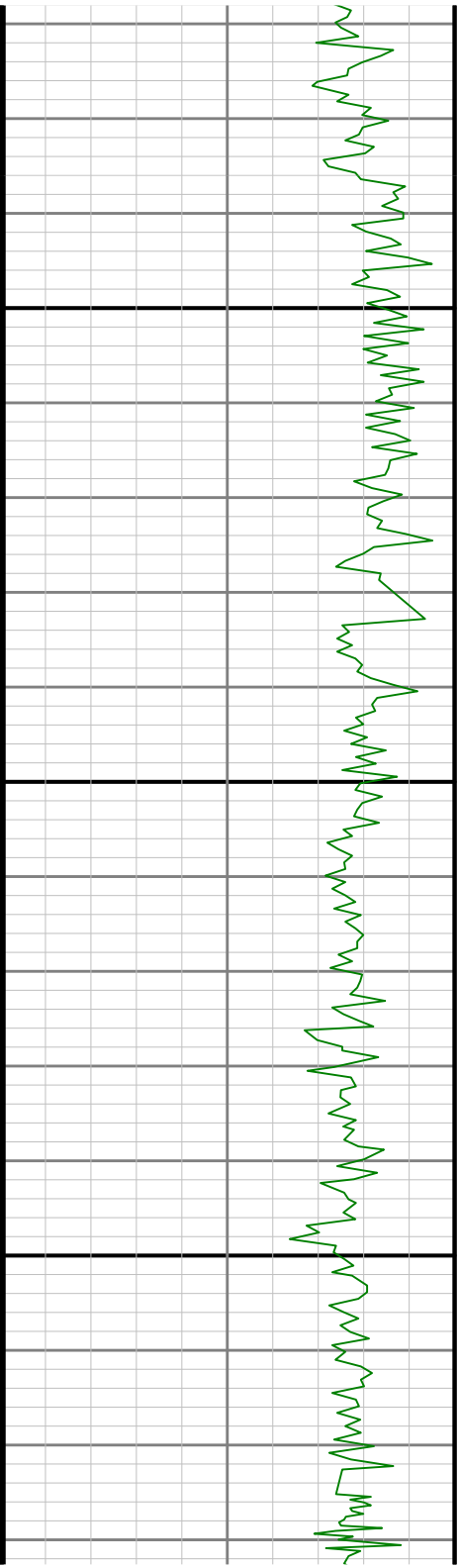
5600

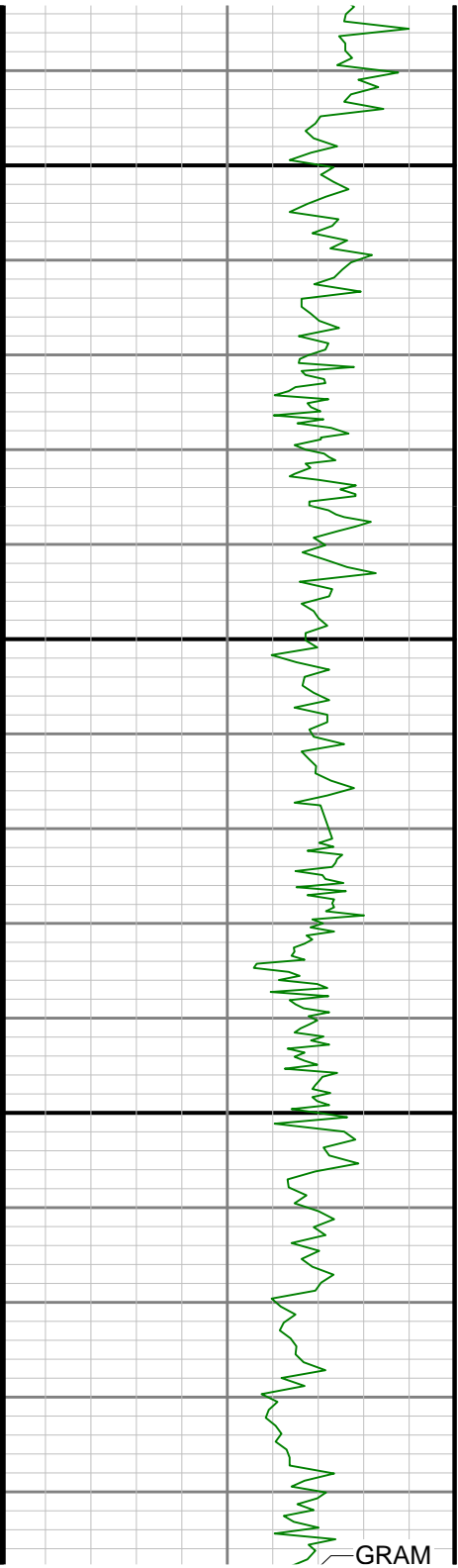




5700

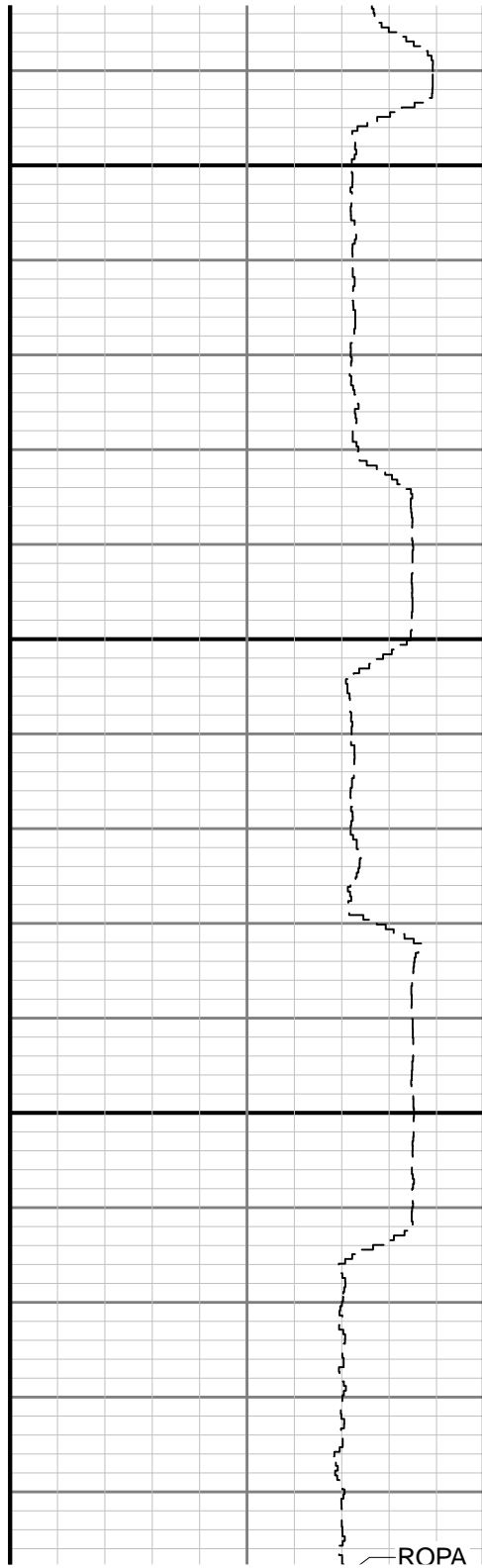
5800



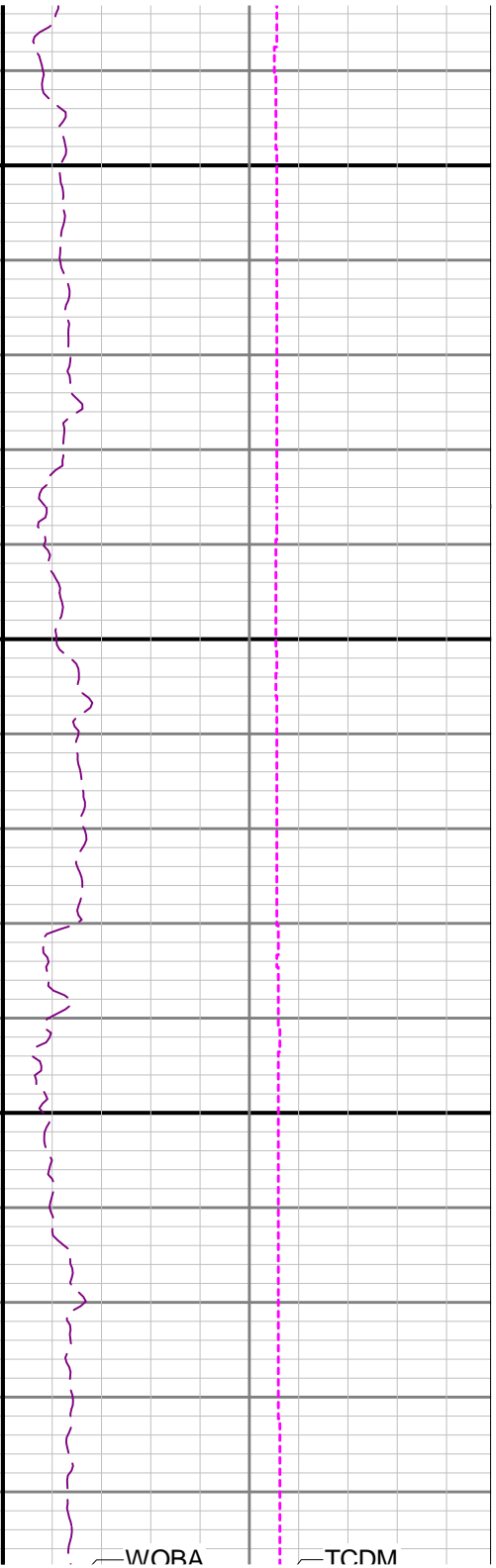


GRAM

5900

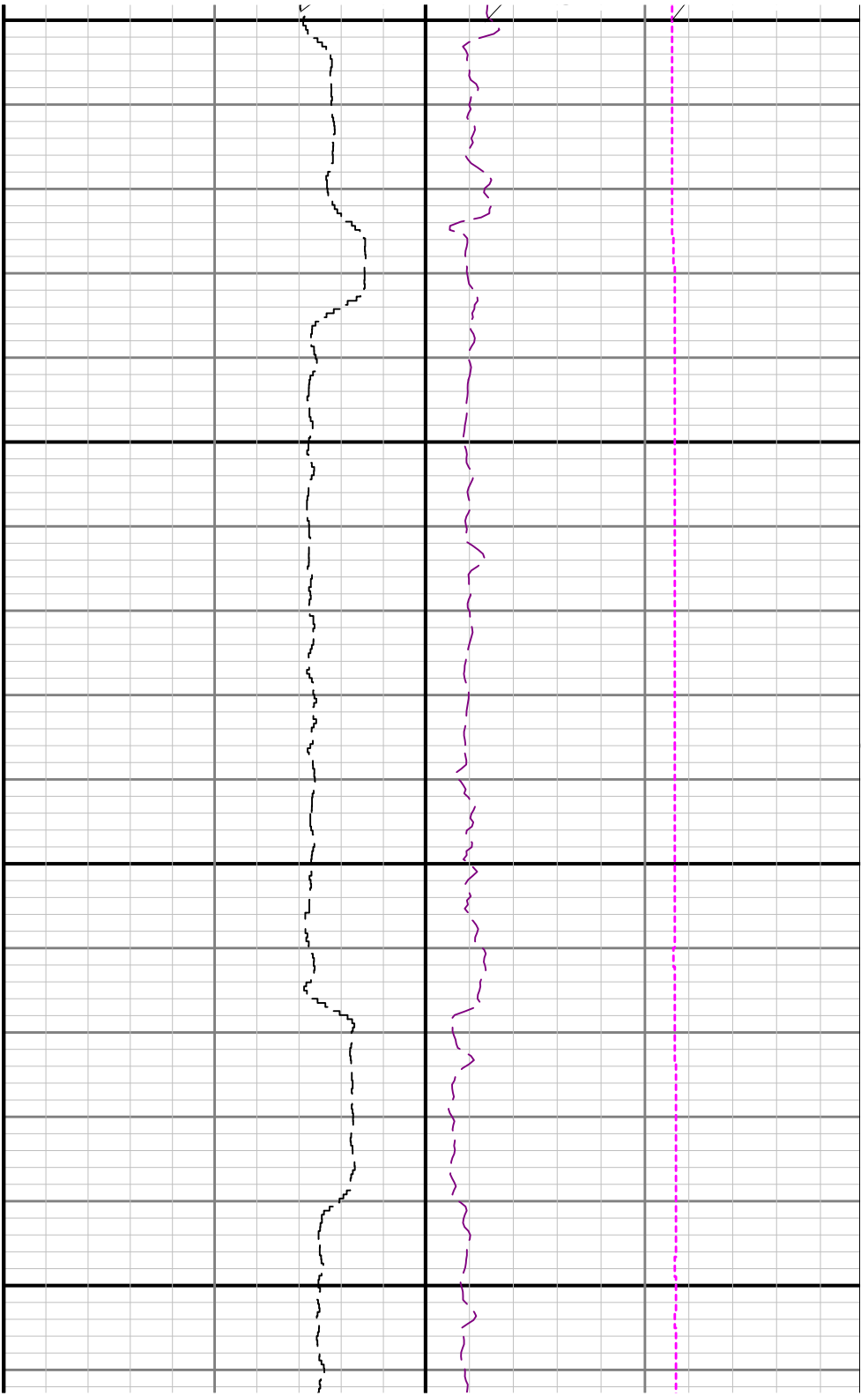


ROPA



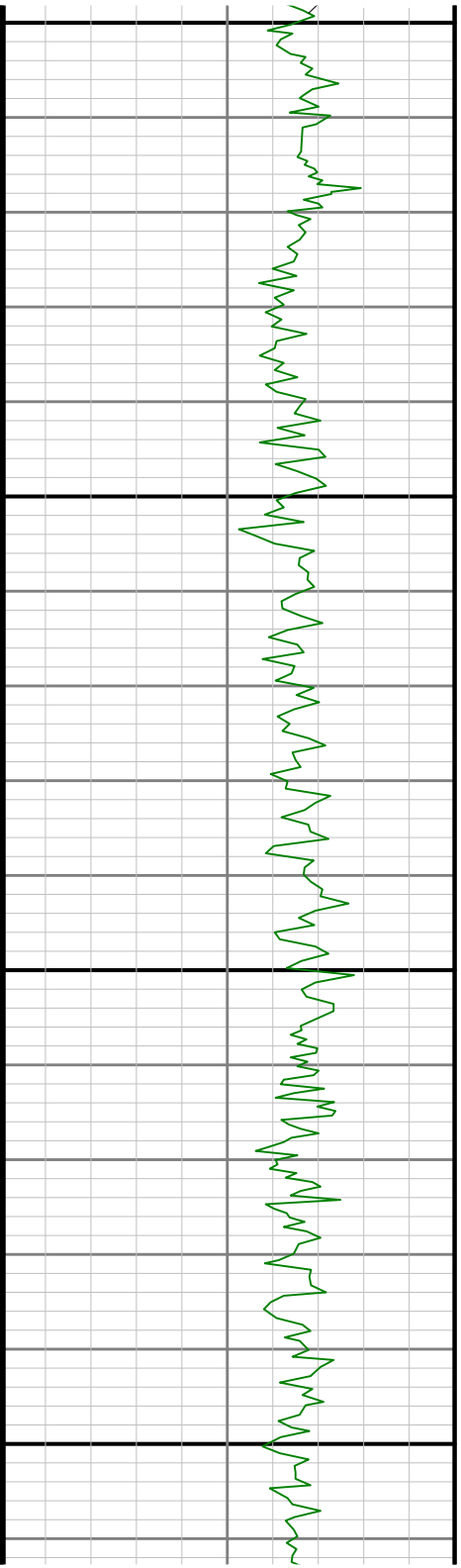
WORA

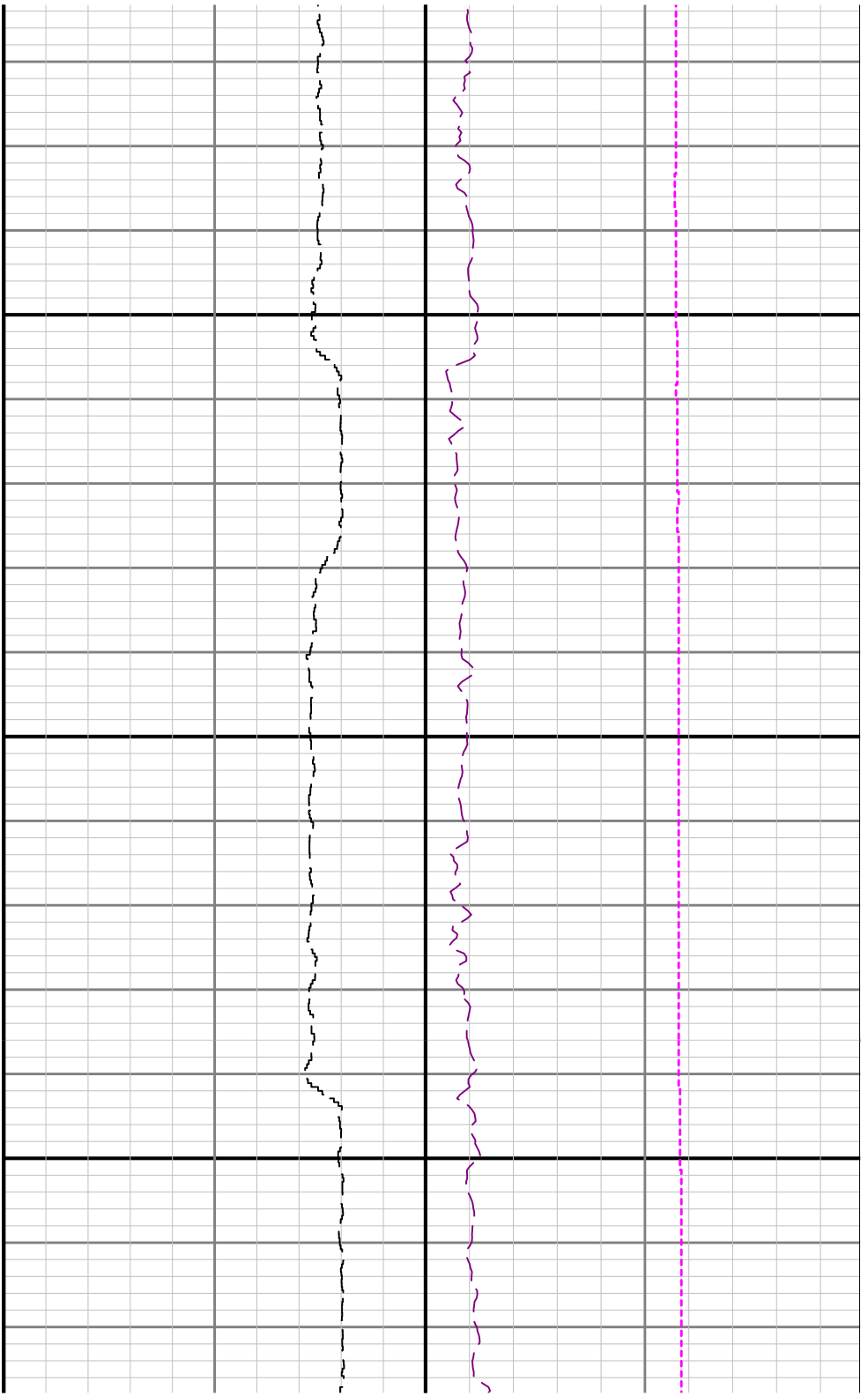
TCDM



1000

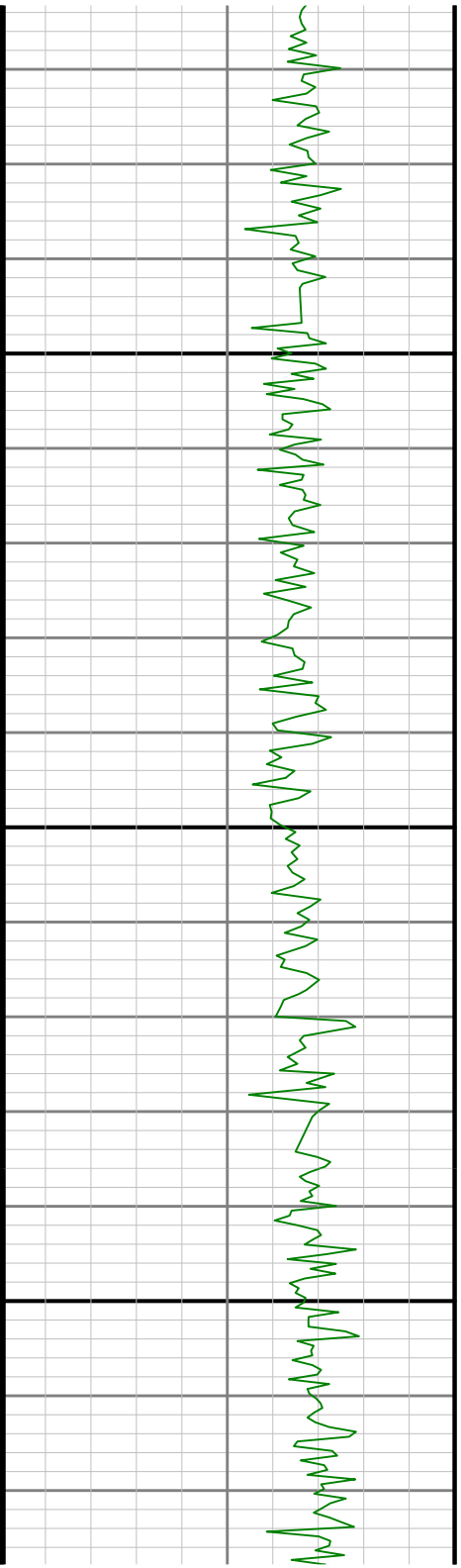
6100





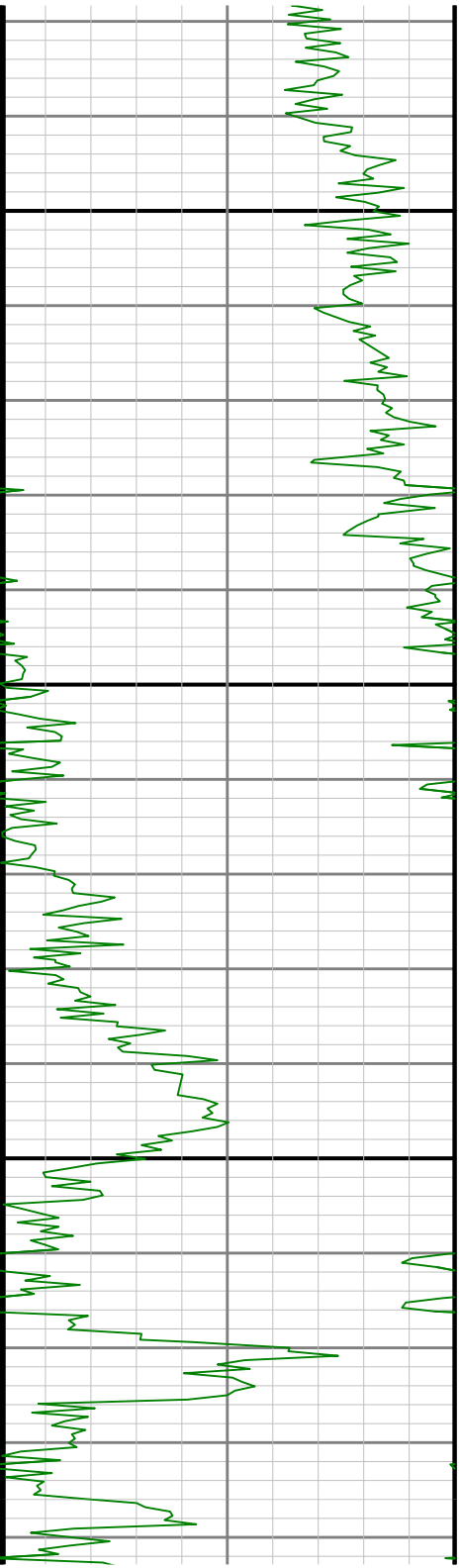
6200

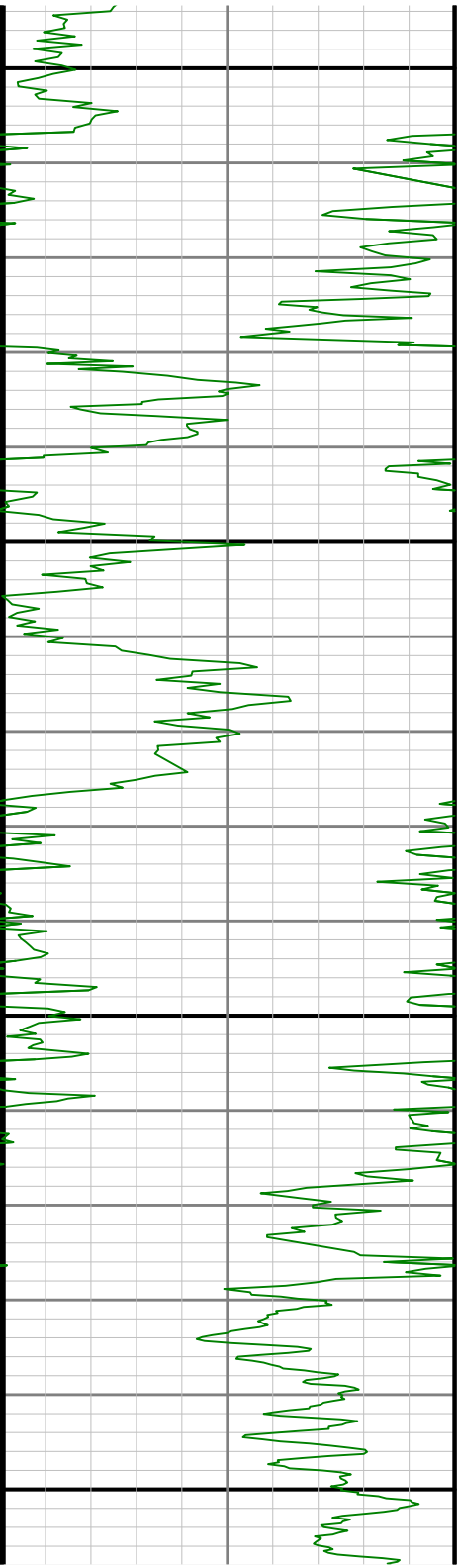
6300





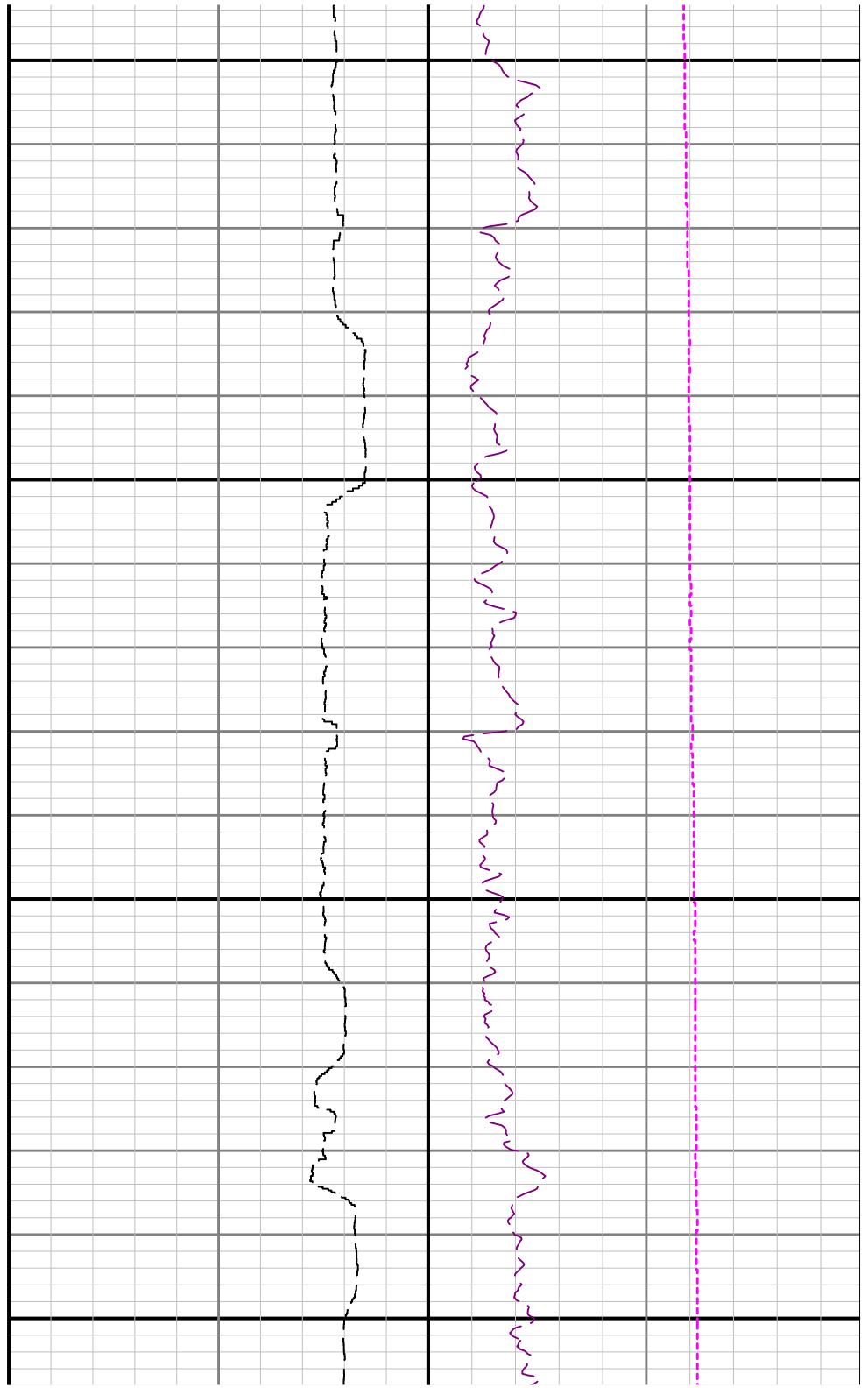
6400

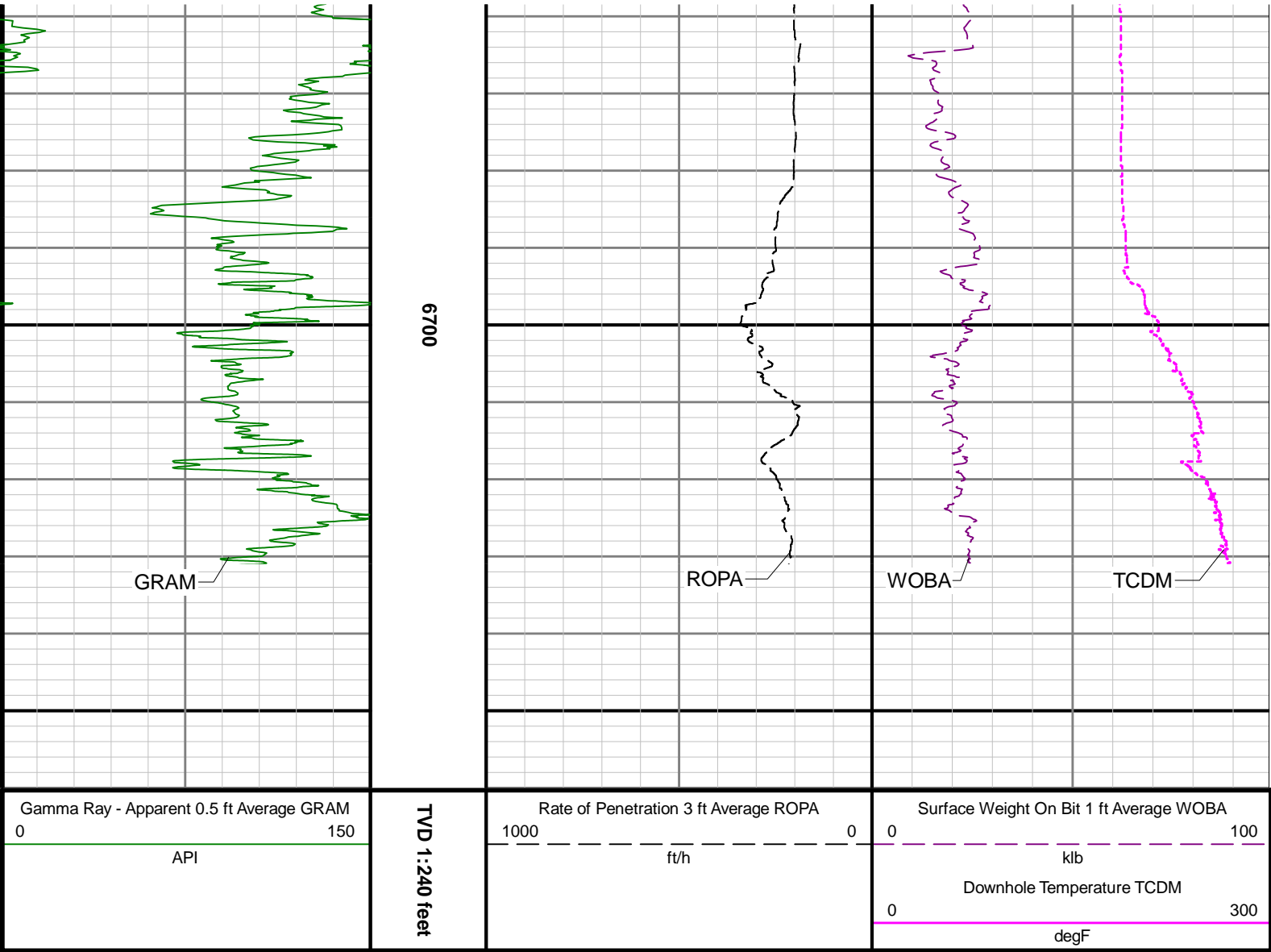




6500

0099





Directional Survey Summary

Latitude: $6^{\circ} 04' 00''$ N	Longitude: $102^{\circ} 00' 00''$ W
North Reference: Grid	Drill Depth Zero: Rig Floor
Vertical Datum is: Ground Level	Vertical Datum to DDZ: (ft) 30.00
Vertical Section North: (m) 0.00	Vertical Section East: (m) 0.00
Vertical Section Azimuth: (deg) 269.25	
Grid Convergence: (deg) -0.64	Magnetic Declination: (deg) 8.11
Total Correction: (deg) 7.47	TVD Calculation Method: Minimum Curvature
Magnetic Correction: Off	Local Magnetic Field: (nT) 52531
Local Magnetic Dip Angle: (deg) 67.13	Local Gravity Field: (m/s ²) 9.801

Tie-In / Projection	Measured Depth	Inclination	Azimuth	Temperature	North	East	True Vertical Depth	Vertical Section	Course Length	Dog Leg Severity	Build Rate	Turn Rate
---------------------	----------------	-------------	---------	-------------	-------	------	---------------------	------------------	---------------	------------------	------------	-----------

	(ft)	(deg)	(deg)	(degF)	(ft)	(ft)	(ft)	(ft)	(ft)	(deg/100ft)	(deg/100ft)	(deg/100ft)
Tie-In	0.00	0.00	0.00	N/A	0.00	0.00	0.00	0.00	0.00	0.00	0.00	0.00
	1886.00	0.45	97.53	N/A	-0.05	2.12	1885.99	-2.12	1886.00	0.45	0.42	-22.00
	1978.00	0.99	95.31	104.1	-0.17	3.27	1977.98	-3.27	92.00	0.59	0.59	-2.41
	2073.00	0.07	207.24	N/A	-0.30	4.06	2072.98	-4.06	95.00	1.07	-0.97	117.82
	2167.00	1.66	74.55	N/A	0.02	5.35	2166.96	-5.35	94.00	1.82	1.69	-141.16
	2262.00	5.06	70.55	N/A	1.78	10.63	2261.79	-10.65	95.00	3.59	3.58	-4.21
	2356.00	7.68	69.81	N/A	5.33	20.43	2355.20	-20.50	94.00	2.79	2.79	-0.79
	2451.00	10.52	71.21	N/A	10.31	34.60	2448.99	-34.74	95.00	3.00	2.99	1.47
	2546.00	12.80	74.53	N/A	15.91	52.96	2542.03	-53.16	95.00	2.50	2.40	3.49
	2640.00	12.73	75.80	N/A	21.23	73.03	2633.70	-73.31	94.00	0.31	-0.07	1.35
	2735.00	12.84	76.38	N/A	26.28	93.44	2726.35	-93.78	95.00	0.18	0.12	0.61
	2830.00	13.84	76.36	N/A	31.45	114.74	2818.78	-115.14	95.00	1.05	1.05	-0.02
	2924.00	13.89	77.63	N/A	36.52	136.69	2910.05	-137.16	94.00	0.33	0.05	1.35
	3019.00	13.78	81.80	N/A	40.58	159.03	3002.29	-159.54	95.00	1.06	-0.12	4.39
	3113.00	15.33	86.51	N/A	42.93	182.51	3093.28	-183.06	94.00	2.07	1.65	5.01
	3208.00	16.79	90.95	N/A	43.47	208.77	3184.57	-209.32	95.00	2.01	1.54	4.67
	3303.00	17.75	96.06	N/A	41.71	236.89	3275.29	-237.42	95.00	1.89	1.01	5.38
	3397.00	17.61	99.20	N/A	37.92	265.18	3364.85	-265.65	94.00	1.03	-0.15	3.34
	3492.00	17.81	97.28	N/A	33.78	293.77	3455.35	-294.19	95.00	0.65	0.21	-2.02
	3586.00	17.93	89.08	N/A	32.19	322.50	3544.83	-322.90	94.00	2.68	0.13	-8.72
	3681.00	17.92	75.06	N/A	36.20	351.26	3635.26	-351.70	95.00	4.53	-0.01	-14.76
	3776.00	17.94	65.81	N/A	45.96	378.73	3725.67	-379.30	95.00	2.99	0.02	-9.74
	3870.00	17.56	62.35	N/A	58.48	404.50	3815.19	-405.23	94.00	1.19	-0.40	-3.68
	3965.00	17.52	67.02	N/A	70.71	430.36	3905.78	-431.25	95.00	1.48	-0.04	4.92
	4059.00	17.64	75.48	N/A	79.81	457.18	3995.41	-458.18	94.00	2.72	0.13	9.00
	4154.00	17.58	80.36	N/A	85.82	485.26	4085.96	-486.34	95.00	1.55	-0.06	5.14
	4249.00	17.41	88.37	N/A	88.63	513.61	4176.58	-514.73	95.00	2.54	-0.18	8.43
	4343.00	17.65	92.47	N/A	88.41	541.91	4266.22	-543.02	94.00	1.34	0.26	4.36
	4438.00	17.58	87.89	N/A	88.32	570.64	4356.77	-571.74	95.00	1.46	-0.07	-4.82
	4533.00	17.33	83.77	N/A	90.38	599.04	4447.40	-600.17	95.00	1.33	-0.26	-4.34
	4627.00	17.34	85.48	N/A	93.01	626.92	4537.13	-628.09	94.00	0.54	0.01	1.82
	4722.00	17.41	88.45	N/A	94.51	655.24	4627.79	-656.42	95.00	0.94	0.07	3.13
	4817.00	17.39	84.10	N/A	96.35	683.57	4718.45	-684.77	95.00	1.37	-0.02	-4.58
	4911.00	17.53	76.54	N/A	101.09	711.32	4808.13	-712.58	94.00	2.42	0.15	-8.04
	5006.00	17.51	72.38	N/A	108.75	738.85	4898.73	-740.21	95.00	1.32	-0.02	-4.38
	5101.00	17.61	75.59	N/A	116.65	766.39	4989.30	-767.85	95.00	1.02	0.11	3.38
	5196.00	16.46	83.64	N/A	121.72	793.69	5080.15	-795.22	95.00	2.76	-1.21	8.47
	5291.00	15.06	88.75	N/A	123.48	819.41	5171.58	-820.96	95.00	2.07	-1.47	5.38
	5385.00	15.52	89.00	N/A	123.96	844.19	5262.25	-845.74	94.00	0.49	0.49	0.27
	5480.00	17.40	90.02	N/A	124.18	871.11	5353.35	-872.66	95.00	2.00	1.98	1.07
	5575.00	17.36	91.72	N/A	123.75	899.48	5444.02	-901.02	95.00	0.54	-0.04	1.79
	5669.00	17.43	93.14	N/A	122.56	927.55	5533.72	-929.08	94.00	0.46	0.07	1.51
	5764.00	16.61	83.94	N/A	123.21	955.27	5624.57	-956.80	95.00	2.96	-0.86	-9.68
	5859.00	11.54	49.76	N/A	130.80	976.07	5716.84	-977.70	95.00	10.03	-5.34	-35.98
	5954.00	7.69	0.33	N/A	143.32	983.38	5810.64	-985.17	95.00	9.20	-4.05	-52.03
	6048.00	4.55	281.57	N/A	150.37	979.75	5904.22	-981.64	94.00	8.65	-3.34	-83.79
	6143.00	7.83	280.15	N/A	152.27	969.69	5998.66	-971.60	95.00	3.46	3.45	-1.49
	6237.00	12.35	281.53	N/A	155.41	953.53	6091.18	-955.48	94.00	4.82	4.81	1.47
	6332.00	18.67	281.55	N/A	160.49	928.65	6182.67	-930.67	95.00	6.65	6.65	0.02
	6427.00	24.01	279.49	N/A	166.72	894.67	6271.13	-896.77	95.00	5.68	5.62	-2.17
	6522.00	31.10	278.26	N/A	173.44	851.27	6355.30	-853.46	95.00	7.49	7.46	-1.29
	6617.00	37.71	276.20	N/A	180.11	798.04	6433.64	-800.33	95.00	7.06	6.96	-2.17
	6711.00	45.90	272.42	N/A	184.65	735.62	6503.66	-737.98	94.00	9.11	8.71	-4.02
	6806.00	51.84	265.32	N/A	183.04	664.20	6566.17	-666.54	95.00	8.41	6.25	-7.47

	6901.00	60.93	262.38	N/A	174.47	585.65	6618.71	-587.88	95.00	9.91	9.57	-3.09
	6996.00	70.67	263.08	N/A	163.54	499.80	6657.61	-501.90	95.00	10.27	10.25	0.74
	7090.00	79.41	264.50	N/A	153.75	409.60	6681.85	-411.58	94.00	9.41	9.30	1.51
	7185.00	88.27	266.85	N/A	146.65	315.52	6692.04	-317.41	95.00	9.64	9.33	2.47
	7280.00	89.44	267.44	N/A	141.92	220.66	6693.94	-222.50	95.00	1.38	1.23	0.62
	7374.00	89.78	266.75	N/A	137.15	126.78	6694.58	-128.57	94.00	0.82	0.36	-0.73
	7469.00	90.09	267.41	N/A	132.31	31.91	6694.68	-33.64	95.00	0.77	0.33	0.69
	7564.00	89.69	266.95	N/A	127.64	-62.98	6694.87	61.30	95.00	0.64	-0.42	-0.48
	7658.00	89.81	268.45	N/A	123.87	-156.90	6695.28	155.26	94.00	1.60	0.13	1.60
	7753.00	89.60	269.23	N/A	121.94	-251.88	6695.76	250.26	95.00	0.85	-0.22	0.82
	7847.00	89.66	269.95	N/A	121.27	-345.87	6696.37	344.25	94.00	0.77	0.06	0.77
	7942.00	89.50	269.67	N/A	120.96	-440.87	6697.07	439.25	95.00	0.34	-0.17	-0.29
	8037.00	89.63	268.98	N/A	119.84	-535.86	6697.79	534.24	95.00	0.74	0.14	-0.73
	8131.00	89.69	268.31	N/A	117.61	-629.83	6698.35	628.24	94.00	0.72	0.06	-0.71
	8226.00	89.90	267.86	N/A	114.44	-724.78	6698.69	723.22	95.00	0.52	0.22	-0.47
	8321.00	89.84	266.91	N/A	110.11	-819.68	6698.90	818.16	95.00	1.00	-0.06	-1.00
	8416.00	89.87	266.51	N/A	104.65	-914.52	6699.14	913.07	95.00	0.42	0.03	-0.42
	8510.00	89.90	267.13	N/A	99.44	-1008.37	6699.33	1006.98	94.00	0.66	0.03	0.66
	8605.00	89.53	268.58	N/A	95.88	-1103.30	6699.80	1101.95	95.00	1.58	-0.39	1.53
	8700.00	89.53	269.00	N/A	93.88	-1198.28	6700.58	1196.95	95.00	0.44	0.00	0.44
	8794.00	89.66	267.33	N/A	90.87	-1292.22	6701.25	1290.92	94.00	1.78	0.14	-1.78
	8889.00	89.72	267.39	N/A	86.49	-1387.12	6701.76	1385.87	95.00	0.09	0.06	0.06
	8984.00	89.62	268.98	N/A	83.48	-1482.07	6702.31	1480.85	95.00	1.68	-0.11	1.67
	9078.00	89.78	270.36	N/A	82.94	-1576.06	6702.80	1574.84	94.00	1.48	0.17	1.47
	9173.00	89.99	269.69	N/A	82.98	-1671.06	6702.99	1669.83	95.00	0.74	0.22	-0.71
	9268.00	89.87	269.60	N/A	82.39	-1766.06	6703.11	1764.83	95.00	0.16	-0.13	-0.09
	9362.00	89.84	269.40	N/A	81.57	-1860.06	6703.35	1858.83	94.00	0.22	-0.03	-0.21
	9457.00	90.08	269.34	N/A	80.53	-1955.05	6703.41	1953.83	95.00	0.26	0.25	-0.06
	9552.00	90.02	269.67	N/A	79.71	-2050.05	6703.33	2048.83	95.00	0.35	-0.06	0.35
	9646.00	89.75	272.14	N/A	81.19	-2144.03	6703.52	2142.78	94.00	2.64	-0.29	2.63
	9741.00	89.68	276.02	N/A	87.95	-2238.77	6703.99	2237.43	95.00	4.08	-0.07	4.08
	9836.00	89.78	271.12	N/A	93.87	-2333.55	6704.44	2332.13	95.00	5.16	0.11	-5.16
	9931.00	89.87	268.92	N/A	93.90	-2428.55	6704.73	2427.11	95.00	2.32	0.09	-2.32
	10025.00	89.90	268.28	N/A	91.60	-2522.52	6704.92	2521.10	94.00	0.68	0.03	-0.68
	10120.00	89.78	265.93	N/A	86.80	-2617.39	6705.18	2616.03	95.00	2.48	-0.13	-2.47
	10215.00	89.53	264.83	N/A	79.15	-2712.08	6705.76	2710.81	95.00	1.19	-0.26	-1.16
	10309.00	90.15	267.40	N/A	72.78	-2805.85	6706.02	2804.66	94.00	2.81	0.66	2.73
	10404.00	89.62	266.69	N/A	67.89	-2900.73	6706.21	2899.59	95.00	0.93	-0.56	-0.75
	10499.00	89.50	267.04	N/A	62.69	-2995.58	6706.94	2994.50	95.00	0.39	-0.13	0.37
	10593.00	90.08	266.13	N/A	57.09	-3089.41	6707.28	3088.40	94.00	1.15	0.62	-0.97
	10688.00	89.75	270.15	N/A	54.01	-3184.34	6707.42	3183.36	95.00	4.25	-0.35	4.23
	10783.00	89.99	270.75	N/A	54.76	-3279.34	6707.64	3278.34	95.00	0.68	0.25	0.63
	10877.00	89.84	269.73	N/A	55.15	-3373.34	6707.78	3372.33	94.00	1.10	-0.16	-1.09
	10972.00	89.81	265.37	N/A	51.09	-3468.23	6708.07	3467.26	95.00	4.59	-0.03	-4.59
	11067.00	89.62	264.41	N/A	42.63	-3562.85	6708.54	3561.98	95.00	1.03	-0.20	-1.01
	11162.00	90.48	267.90	N/A	36.26	-3657.62	6708.46	3656.83	95.00	3.78	0.91	3.67
	11256.00	89.71	266.17	N/A	31.40	-3751.49	6708.30	3750.75	94.00	2.01	-0.82	-1.84
	11351.00	89.81	264.16	N/A	23.39	-3846.14	6708.70	3845.51	95.00	2.12	0.11	-2.12
	11445.00	89.93	270.74	N/A	19.21	-3940.00	6708.91	3939.41	94.00	7.00	0.13	7.00
	11539.00	89.62	272.52	N/A	21.88	-4033.96	6709.28	4033.32	94.00	1.92	-0.33	1.89
	11634.00	89.87	269.48	N/A	23.54	-4128.93	6709.71	4128.27	95.00	3.21	0.26	-3.20
	11728.00	89.53	266.98	N/A	20.64	-4222.88	6710.20	4222.24	94.00	2.68	-0.36	-2.66
	11823.00	89.71	265.08	N/A	14.06	-4317.64	6710.83	4317.09	95.00	2.01	0.19	-2.00
	11918.00	89.59	264.35	N/A	5.31	-4412.23	6711.41	4411.79	95.00	0.78	-0.13	-0.77
	12012.00	89.56	264.84	N/A	-3.54	-4505.81	6712.11	4505.47	94.00	0.52	-0.03	0.52

		12107.00	89.56	267.06	N/A	-10.25	-4600.57	6712.84	4600.31	95.00	2.34	0.00	2.34
		12202.00	89.71	267.32	N/A	-14.91	-4695.45	6713.44	4695.24	95.00	0.32	0.16	0.27
		12297.00	89.74	268.93	N/A	-18.02	-4790.40	6713.90	4790.22	95.00	1.70	0.03	1.69
		12391.00	90.14	270.87	N/A	-18.18	-4884.39	6714.00	4884.21	94.00	2.11	0.43	2.06
		12486.00	90.08	271.13	N/A	-16.52	-4979.38	6713.81	4979.17	95.00	0.28	-0.06	0.27
		12581.00	90.08	271.13	N/A	-14.65	-5074.36	6713.68	5074.12	95.00	0.00	0.00	0.00
		12675.00	90.02	270.50	N/A	-13.31	-5168.35	6713.60	5168.08	94.00	0.67	-0.06	-0.67
		12770.00	90.08	269.68	N/A	-13.16	-5263.35	6713.52	5263.07	95.00	0.87	0.06	-0.86
		12865.00	90.02	269.77	N/A	-13.62	-5358.35	6713.43	5358.07	95.00	0.11	-0.06	0.09
		12959.00	90.05	268.32	N/A	-15.19	-5452.33	6713.38	5452.06	94.00	1.54	0.03	-1.54
		13053.00	89.61	267.28	N/A	-18.79	-5546.26	6713.65	5546.03	94.00	1.20	-0.47	-1.11
		13147.00	89.76	266.36	N/A	-24.01	-5640.11	6714.17	5639.94	94.00	0.99	0.16	-0.98
		13242.00	89.64	265.95	N/A	-30.38	-5734.90	6714.67	5734.80	95.00	0.45	-0.13	-0.43
		13337.00	89.50	266.45	N/A	-36.68	-5829.69	6715.38	5829.67	95.00	0.55	-0.15	0.53
		13431.00	89.69	267.53	N/A	-41.61	-5923.55	6716.05	5923.59	94.00	1.17	0.20	1.15
		13526.00	89.52	267.21	N/A	-45.97	-6018.45	6716.70	6018.54	95.00	0.38	-0.18	-0.34
		13621.00	89.53	267.00	N/A	-50.77	-6113.32	6717.49	6113.47	95.00	0.22	0.01	-0.22
		13715.00	89.52	267.27	N/A	-55.47	-6207.20	6718.27	6207.40	94.00	0.29	-0.01	0.29
		13810.00	89.40	268.15	N/A	-59.26	-6302.12	6719.16	6302.36	95.00	0.93	-0.13	0.93
		13904.00	90.02	268.73	N/A	-61.82	-6396.09	6719.64	6396.35	94.00	0.90	0.66	0.62
		13999.00	89.71	268.60	N/A	-64.03	-6491.06	6719.86	6491.34	95.00	0.35	-0.33	-0.14
		14094.00	89.77	268.94	N/A	-66.07	-6586.04	6720.29	6586.34	95.00	0.36	0.06	0.36
		14188.00	89.89	268.64	N/A	-68.06	-6680.02	6720.57	6680.33	94.00	0.34	0.13	-0.32
		14283.00	89.77	269.24	N/A	-69.82	-6775.00	6720.85	6775.33	95.00	0.64	-0.13	0.63
		14378.00	89.68	270.37	N/A	-70.14	-6870.00	6721.31	6870.32	95.00	1.19	-0.09	1.19
		14472.00	89.90	270.82	N/A	-69.16	-6963.99	6721.65	6964.30	94.00	0.53	0.23	0.48
		14567.00	89.96	270.01	N/A	-68.47	-7058.99	6721.77	7059.28	95.00	0.85	0.06	-0.85
		14661.00	89.96	269.03	N/A	-69.26	-7152.98	6721.84	7153.27	94.00	1.04	0.00	-1.04
		14756.00	89.84	267.83	N/A	-71.87	-7247.94	6722.00	7248.26	95.00	1.27	-0.13	-1.26
		14851.00	89.68	263.63	N/A	-78.94	-7342.66	6722.40	7343.06	95.00	4.42	-0.17	-4.42
		14945.00	90.02	269.40	N/A	-84.65	-7436.44	6722.65	7436.91	94.00	6.15	0.36	6.14
		15040.00	89.99	270.75	N/A	-84.52	-7531.44	6722.64	7531.90	95.00	1.42	-0.03	1.42
		15134.00	89.81	272.33	N/A	-82.00	-7625.40	6722.80	7625.82	94.00	1.69	-0.19	1.68
		15229.00	89.68	269.14	N/A	-80.78	-7720.38	6723.23	7720.78	95.00	3.36	-0.14	-3.36
		15324.00	89.81	268.94	N/A	-82.37	-7815.37	6723.65	7815.78	95.00	0.25	0.14	-0.21
		15419.00	89.65	265.90	N/A	-86.65	-7910.26	6724.10	7910.72	95.00	3.20	-0.17	-3.20
		15513.00	90.06	259.78	N/A	-98.36	-8003.48	6724.33	8004.08	94.00	6.53	0.44	-6.51
		15608.00	90.06	265.05	N/A	-110.89	-8097.62	6724.23	8098.38	95.00	5.55	0.00	5.55
		15703.00	90.06	268.15	N/A	-116.53	-8192.44	6724.14	8193.26	95.00	3.26	0.00	3.26
		15797.00	89.53	269.56	N/A	-118.40	-8286.42	6724.47	8287.26	94.00	1.60	-0.56	1.50
		15892.00	89.69	269.80	N/A	-118.93	-8381.41	6725.12	8382.25	95.00	0.30	0.17	0.25
		15987.00	89.69	270.59	N/A	-118.61	-8476.41	6725.63	8477.24	95.00	0.83	0.00	0.83
		16081.00	89.62	271.35	N/A	-117.02	-8570.40	6726.20	8571.19	94.00	0.81	-0.07	0.81
		16176.00	89.66	272.55	N/A	-113.79	-8665.34	6726.80	8666.08	95.00	1.26	0.04	1.26
		16271.00	89.69	271.82	N/A	-110.17	-8760.27	6727.33	8760.96	95.00	0.77	0.03	-0.77
		16365.00	89.90	270.55	N/A	-108.22	-8854.24	6727.67	8854.90	94.00	1.37	0.22	-1.35
		16460.00	89.72	268.99	N/A	-108.60	-8949.24	6727.99	8949.89	95.00	1.65	-0.19	-1.64
		16554.00	89.69	266.40	N/A	-112.38	-9043.15	6728.47	9043.85	94.00	2.76	-0.03	-2.76
		16649.00	89.72	267.22	N/A	-117.67	-9138.00	6728.96	9138.76	95.00	0.86	0.03	0.86
		16744.00	89.87	266.97	N/A	-122.48	-9232.88	6729.30	9233.69	95.00	0.31	0.16	-0.26
		16838.00	89.69	266.88	N/A	-127.53	-9326.74	6729.66	9327.62	94.00	0.21	-0.19	-0.10
		16933.00	89.66	269.47	N/A	-130.55	-9421.69	6730.20	9422.59	95.00	2.73	-0.03	2.73
		17027.00	89.69	270.78	N/A	-130.35	-9515.68	6730.73	9516.57	94.00	1.39	0.03	1.39
		17122.00	89.69	271.65	N/A	-128.33	-9610.66	6731.25	9611.52	95.00	0.92	0.00	0.92
		17217.00	90.12	271.38	N/A	-125.82	-9705.63	6731.40	9706.44	95.00	0.53	0.45	-0.28

	17312.00	89.90	269.59	N/A	-125.02	-9800.62	6731.39	9801.42	95.00	1.90	-0.23	-1.88
Projection	17347.00	89.90	269.59	N/A	-125.27	-9835.62	6731.45	9836.41	35.00	0.00	0.00	0.00