

LWD Composite Log



Azimuthal Gamma Ray
Gamma Ray
Natural Formation Evaluation

Scale:

1:1200 TVD

Company: Noble Energy

Well: Shadow A26-646

Depth Reference:

Field: Weld County (Noble NAD 83 Grid)

Driller's Depth

County: Weld County

State: Colorado

Status:

Final Print

Surface Location:

Latitude:

Longitude:

Directional
Rotary Steerable
VSS

Other Services:

API No: 05-123-42882-00

Job ID: 7952654

SEC: 30

TWN: 6N

RGE: 63W

Permanent Datum (P.D.): Ground Level

Elevation:

4643.00 ft

KB:

D/F:

N/A

Log Measured From: Rig Floor

Above P.D.

30.00 ft

GL:

4643.00 ft

Dates

Interval Logged

Magnetic Field Reference

Date From: 2016-05-13

Top: (ft)

1916.00

Azi Reference North:

Grid

Dip Angle: (deg)

67.13

Date To: 2016-05-16

Bottom: (ft)

17659.00

Total Magnetic Field Strength: (nT)

52541

Spud Date: 2016-05-12

Mag to Reference North Correction: (deg)

7.48 E

Borehole Record

Casing Record

Hole Size (in)

From (ft)

To (ft)

17659.00

Size (in)

Weight (lb/ft)

From (ft)

To (ft)

1918.00

8.500

1927.00

17659.00

9.625

36.00

0.00

1918.00

Mud Record

Deviation Record

Type

From (ft)

To (ft)

17659.00

Hole Size (in)

Interval (ft)

Inc | Az (Start)

Inc | Az (End)

1927.00

17659.00

8.500

15732.00

1.14 | 358.44

90.12 | 268.80

Oil Based Mud

1927.00

17659.00

8.500

15732.00

1.14 | 358.44

90.12 | 268.80

1927.00

17659.00

8.500

15732.00

1.14 | 358.44

90.12 | 268.80

Acquisition System

Software Version

Other

Baker Hughes Cadence

G3.2

Rig:

H&P 321

Prior Studio

3.2.7268.7

Contractor:

Helmerich & Payne Drilling Co

District:

RMD

Unit:

D&E

"These interpretations and analyses ("Interpretations") are opinions provided by Baker Hughes Oilfield Operations, Inc ("Baker Hughes"), based upon industry practice, empirical relationships, assumptions and measurements, (many of which may be provided by the customer). The Interpretations are not infallible and may be subject to different opinions. Vjwu."Dcmgt"Jwijgu"fqgu"pqv"ycttcpv"vjgkt"ceewtce{."eqttgevpguu."qt"eqorngvgpguu."qt"vjcv"vjg"ewuvqogtøu"cpflqt"cp{"vjktf"rctv{øu"tgnkcpeg"qp"uwej"Kpvgtrtgv cvkqpu"yknn"ceeqrnkuj"cp{"rctvkewnct"tguwnvu0"Vjg"ewuvqogt"cuuwogu"hwnn"responsibility for the use of the Interpretations and for decisions based thereon and the customer agrees to release, defend and indemnify Baker Hughes, its parent, subsidiaries and affiliated or related entities, and subcontractors, together with its and their officers, directors, employees, agents and invitees against, any and all claims, losses, damages, or expenses sustained by the customer or any third party arising out of reliance upon or use of the Interpretations, without regard to the cause(s) thereof, including without limitation any form of negligence on the

part of Baker Hughes. Unless other contract terms have been agreed to by the parties, each party's liabilities and obligations shall be limited to the amount of cash or cash equivalents that the party has received from the other party in connection with the contract. This limitation shall not apply to the extent that the party is entitled to reimbursement of costs incurred in connection with the contract. The parties agree that the limitation on damages shall not apply to the extent that the party is entitled to reimbursement of costs incurred in connection with the contract. The parties agree that the limitation on damages shall not apply to the extent that the party is entitled to reimbursement of costs incurred in connection with the contract.

Log Run Summary

Run No	Bit Run No.	Bit Size (in)	Bit Type	Bit Gauge Length (in)	Assembly Type	Logged Interval		Bit Depth Interval		Date / Time		Circ. Hours (h)
						Top	Bottom	From	To	Start Logging	End Logging	
						(ft)	(ft)	(ft)	(ft)			
1	2	8.500	PDC	2.00	AutoTrak Curve	1916.00	17659.00	1927.00	17659.00	2016-05-13 19:58	2016-05-17 04:39	69.55

Crew

Name		Arrive Wellsite	Depart Wellsite	Name		Arrive Wellsite	Depart Wellsite	Name		Arrive Wellsite	Depart Wellsite
Alex Osborne		2016-05-12	2016-05-16	Matthew Delmore		2016-05-12	2016-05-17	Michael Gurnsey		2016-05-12	2016-05-13
William Drake		2016-05-12	2016-05-17	Chad Hough		2016-05-14	2016-05-17	David Browning		2016-05-16	2016-05-17
Hans Cary		2016-05-16	2016-05-17								

Mud Properties Record

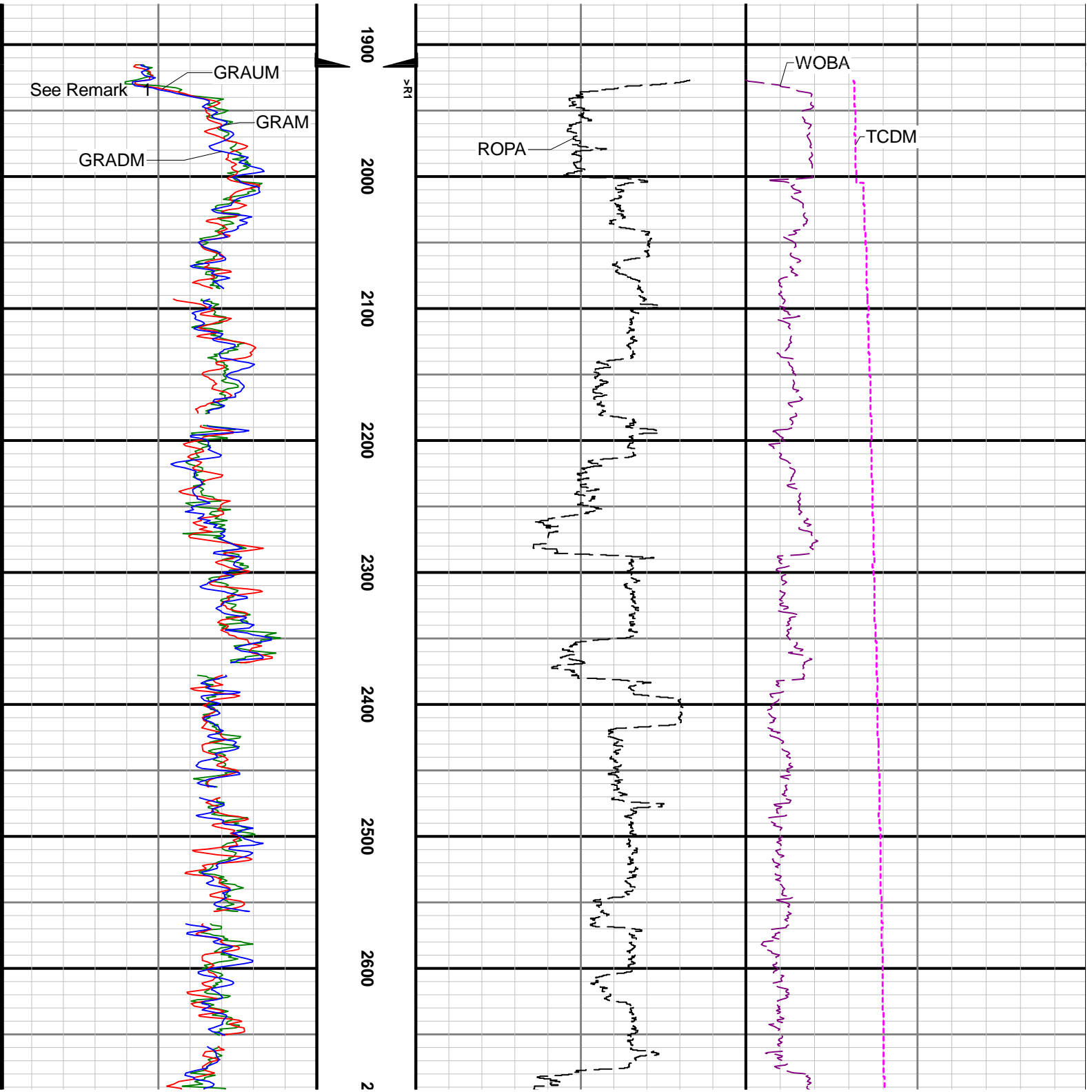
Date / Time		Run No.	Measured Depth (ft)	Mud Type	Density (ppg)	Viscosity (cP)	pH	Fluid Loss (cm3)	Oil / Water	Source	Total Chlorides (ppm)	K+ (%)
2016-05-13 13:45		1	1927.00	Oil Based Mud	9.5	13	N/A	16.4	64.8/25.0	Active Pit	43000	0.00
2016-05-14 02:30		1	3750.00	Oil Based Mud	9.1	13	N/A	16.0	65.5/26.0	Active Pit	46000	0.00
2016-05-14 13:30		1	6438.00	Oil Based Mud	9.2	11	N/A	16.8	67.0/24.0	Active Pit	44000	0.00
2016-05-15 02:30		1	9103.31	Oil Based Mud	9.3	11	N/A	16.6	66.0/24.0	Active Pit	44000	0.00
2016-05-15 13:40		1	11275.00	Oil Based Mud	9.5	13	N/A	17.2	64.5/24.0	Active Pit	41000	0.00
2016-05-16 02:35		1	13940.00	Oil Based Mud	9.5	12	N/A	17.4	66.0/22.0	Active Pit	40000	0.00
2016-05-16 13:45		1	15711.00	Oil Based Mud	9.7	13	N/A	17.8	66.0/20.5	Active Pit	39000	0.00
2016-05-17 02:45		1	17560.00	Oil Based Mud	9.7	13	N/A	18.0	63.0/23.5	Active Pit	39000	0.00

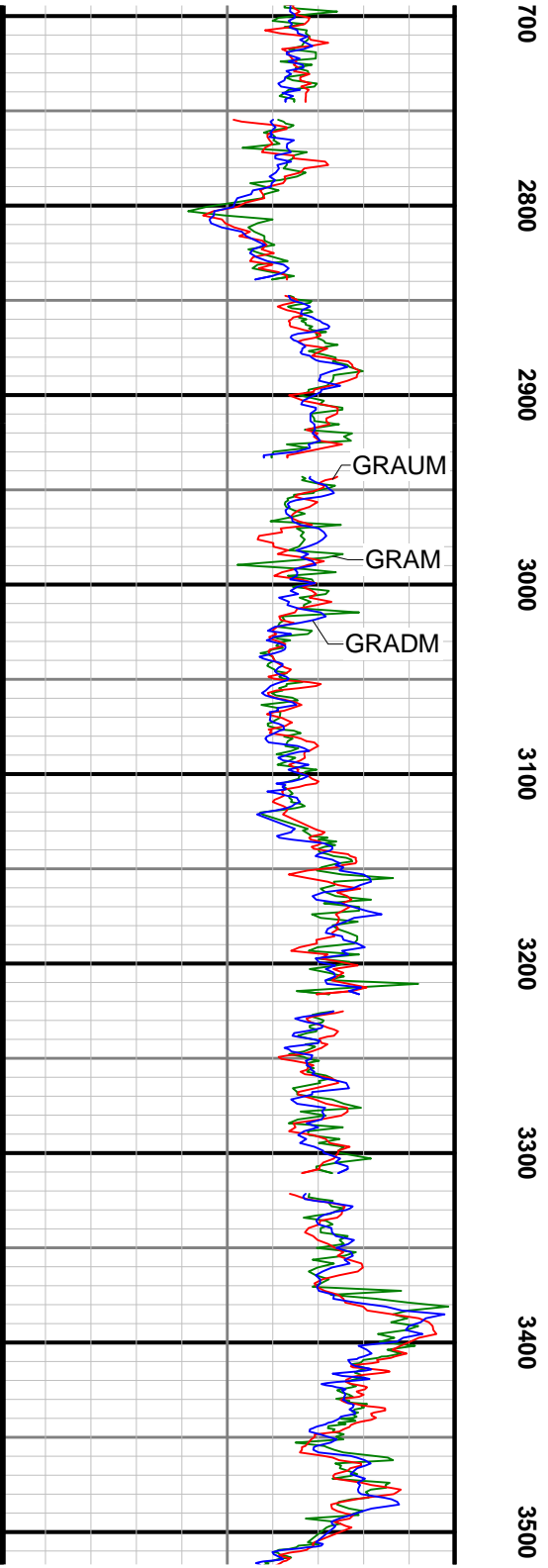
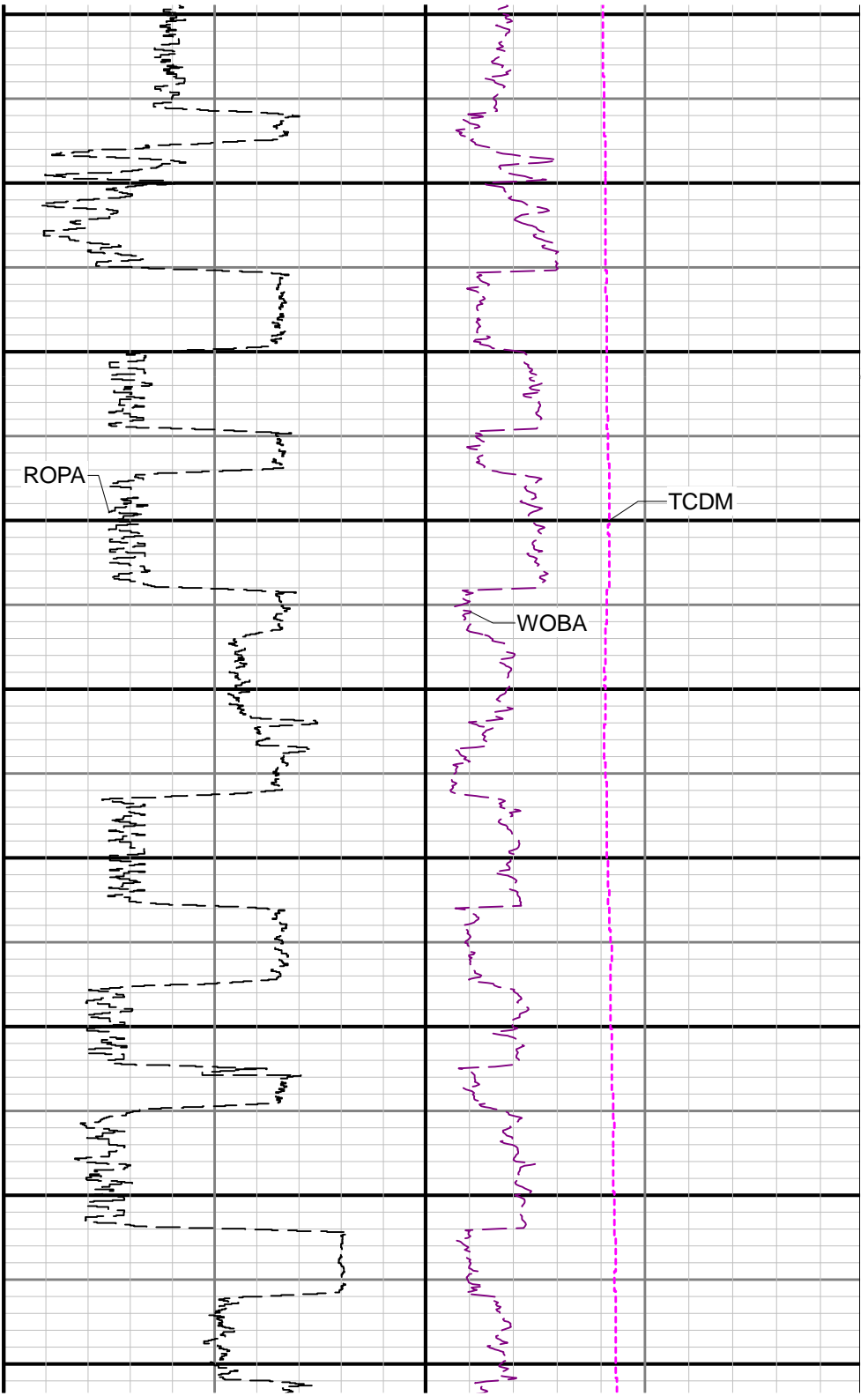
Equipment and Service Data

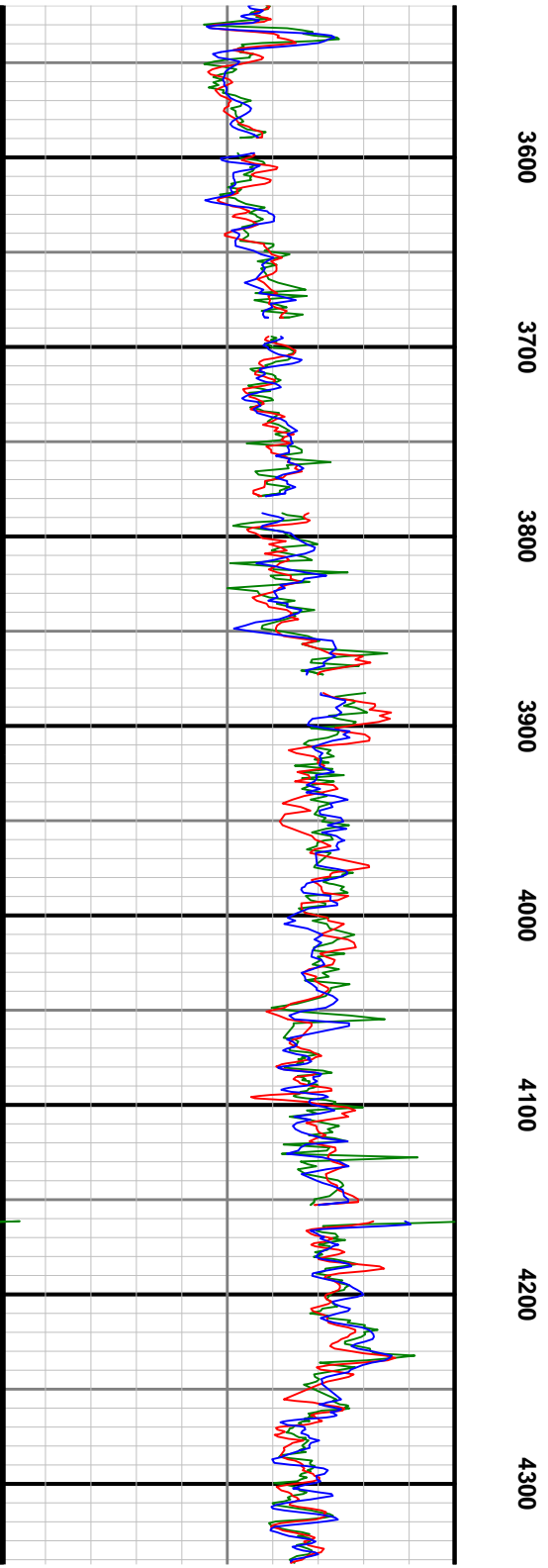
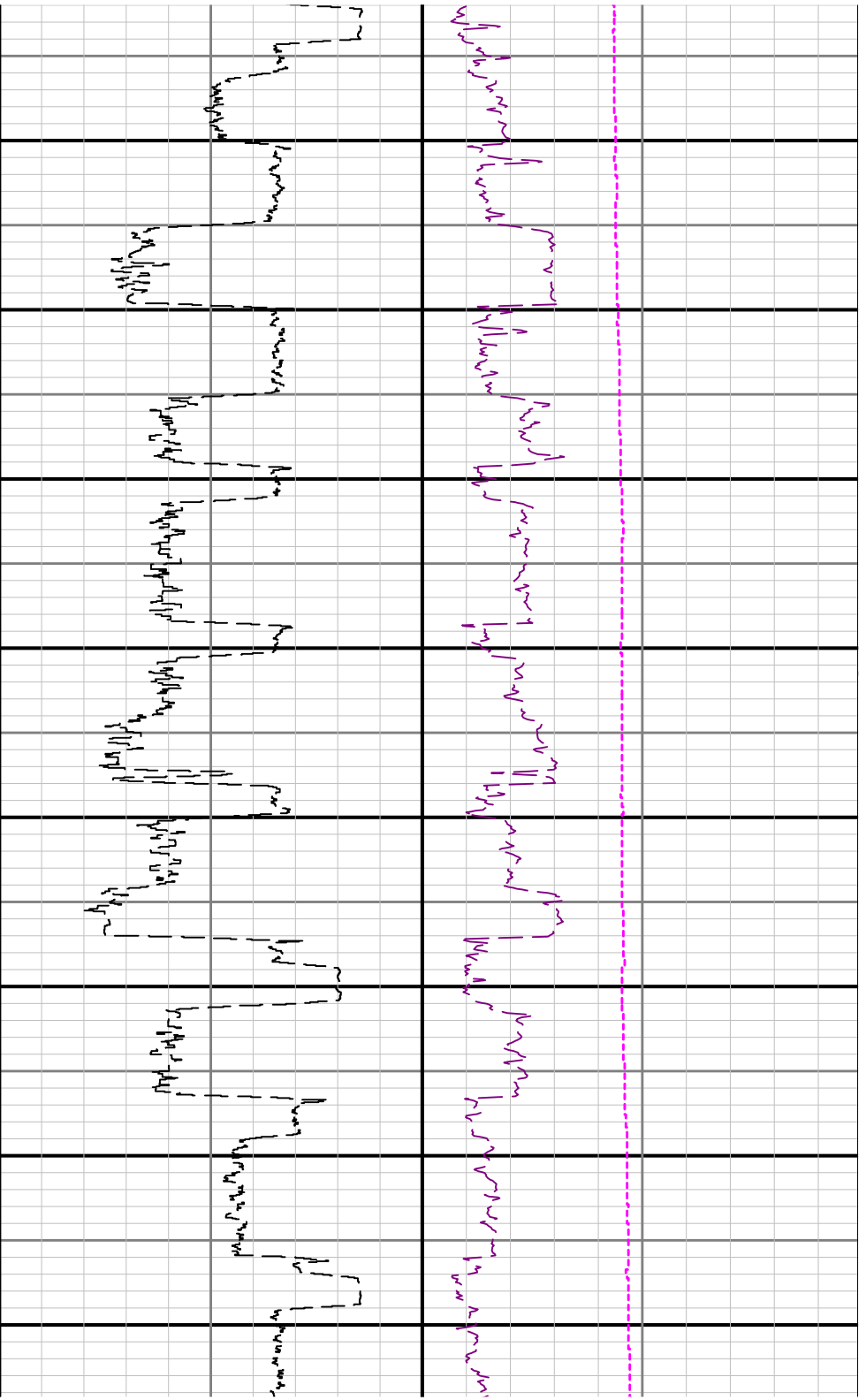
Run No.	Tool	Serial Number	Measurement	Sensor Offset (ft)	Bit Offset (ft)	Max O.D. (in)	Min I.D. (in)
1	ATC_SU	11813726	Near Bit Inclination	5.93	6.55	7.000	4.330
1	ATC_SU	11813726	Near Bit VSS	5.93	6.55	7.000	4.330
1	ATC_MWD	12706130	Gamma (single)	2.76	12.72	7.000	3.250
1	ATC_MWD	12706130	Directional (mag)	12.28	22.24	7.000	3.250

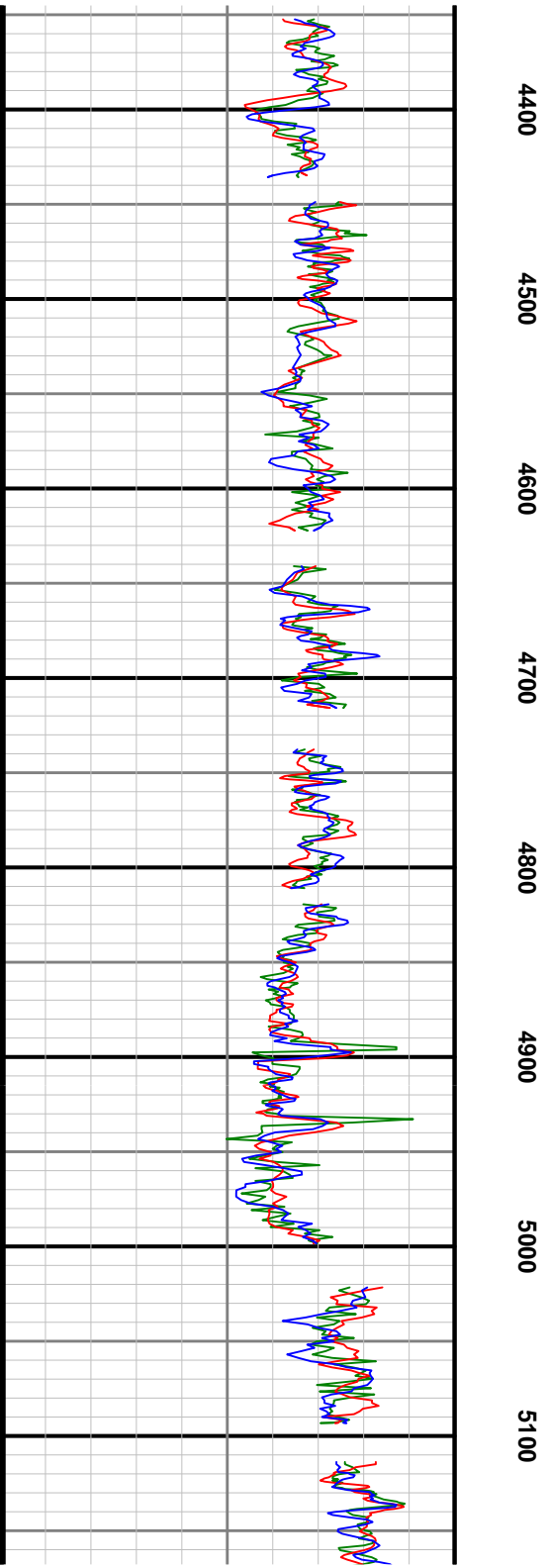
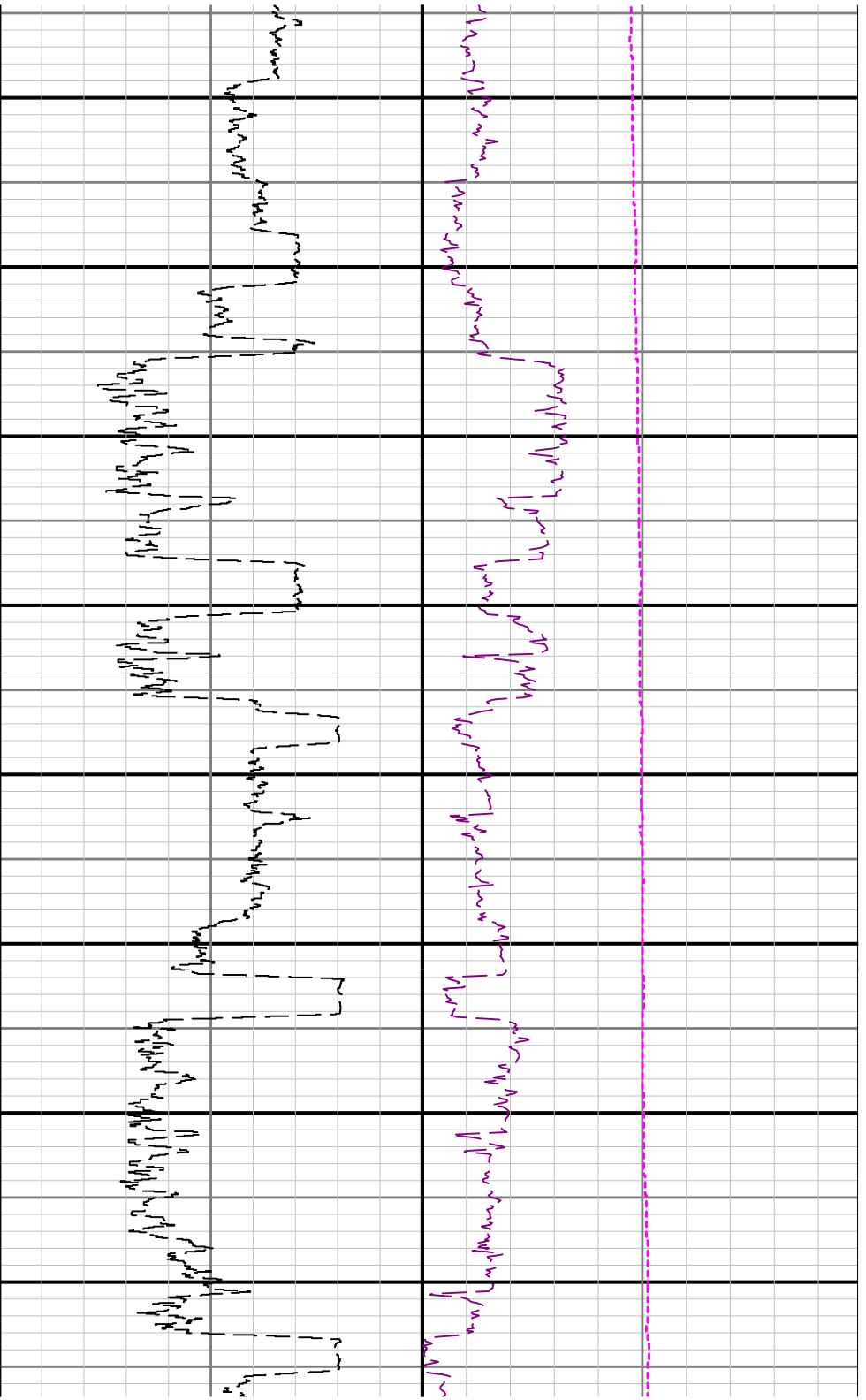
Service and Tool Mnemonics

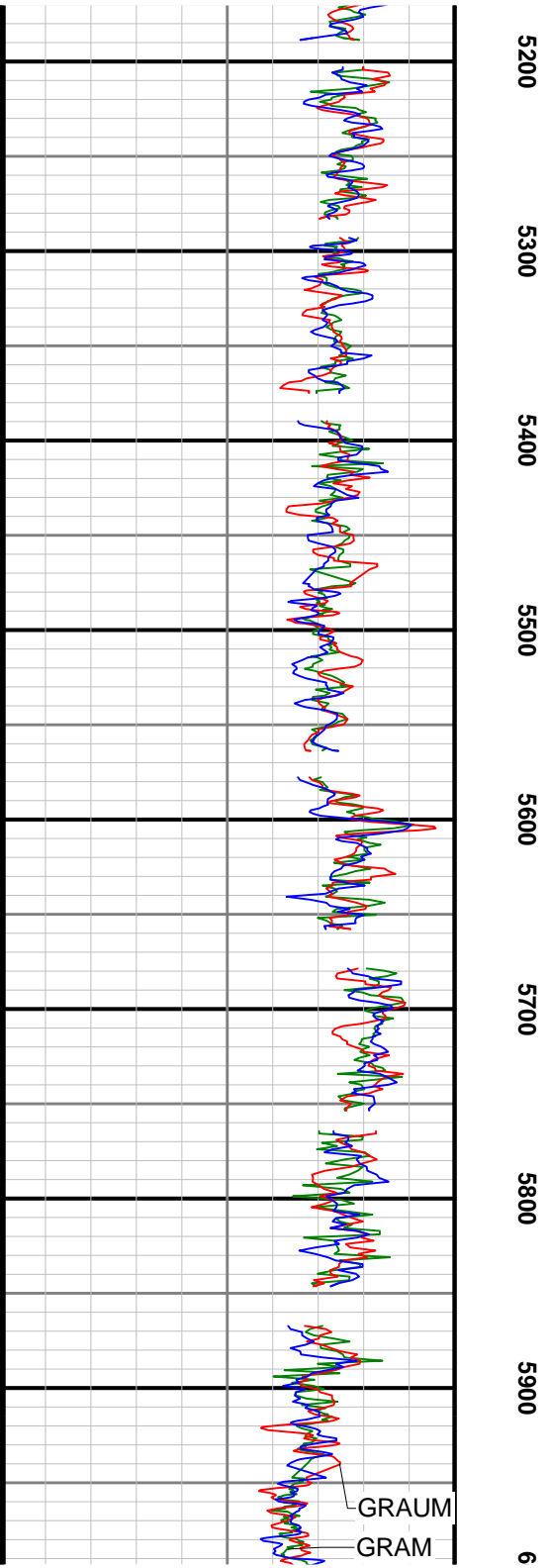
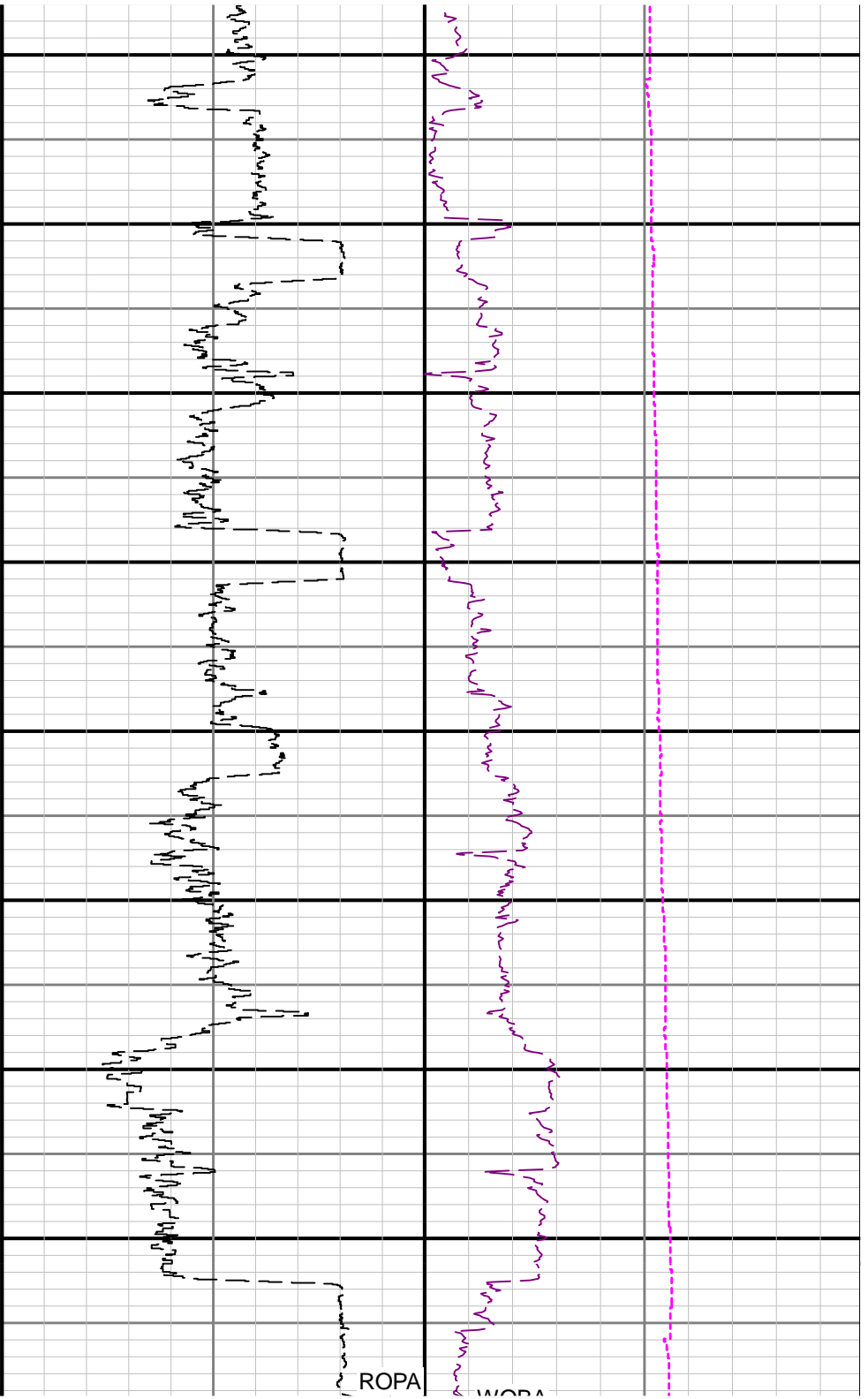
[illegible]

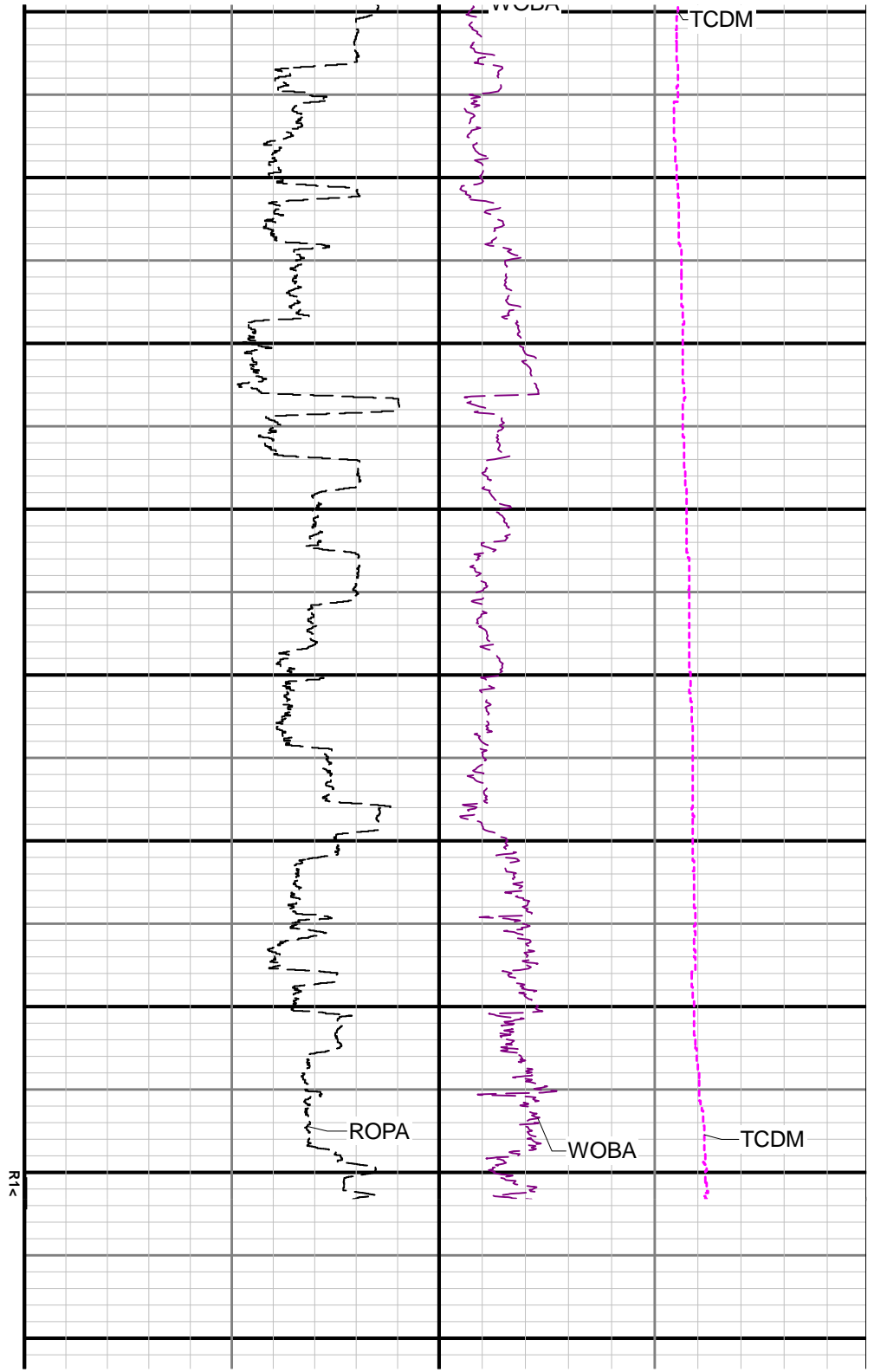
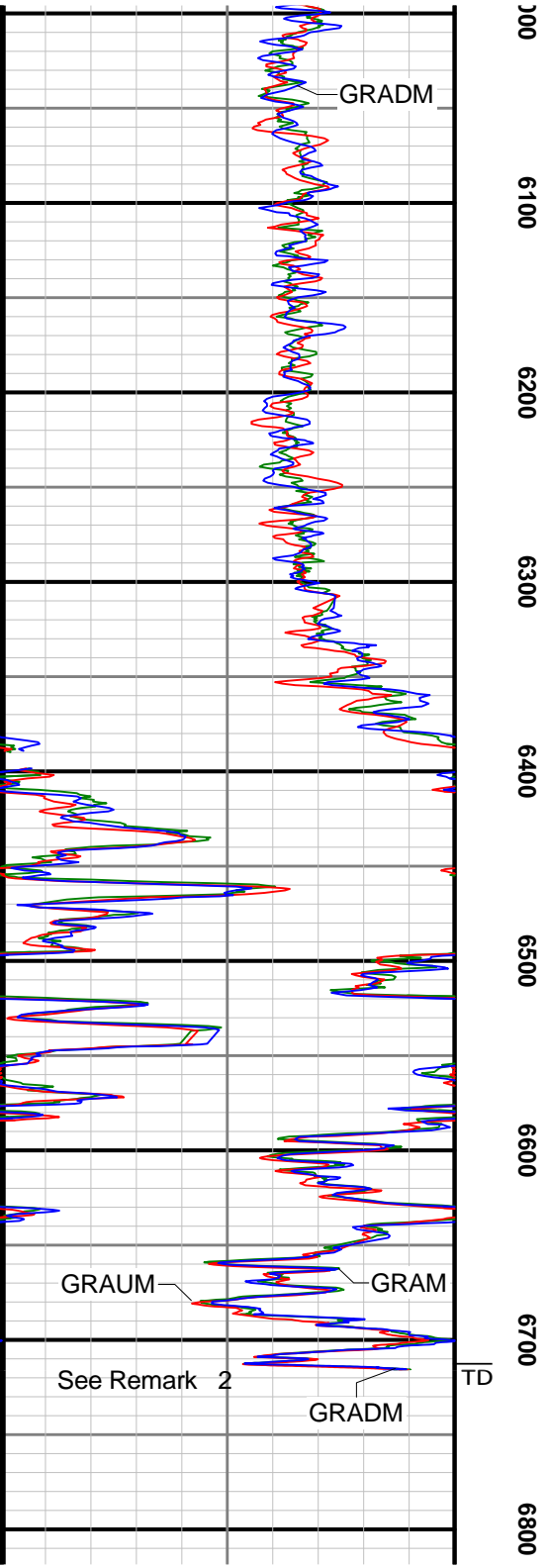












	4439.00	6.41	94.37	N/A	57.43	238.27	4423.93	-238.71	95.00	1.10	0.03	-9.93
	4533.00	6.23	84.78	N/A	57.50	248.58	4517.37	-249.02	94.00	1.14	-0.19	-10.20
	4628.00	6.12	83.67	N/A	58.52	258.75	4611.82	-259.19	95.00	0.17	-0.12	-1.17
	4722.00	6.33	99.72	N/A	58.20	268.84	4705.27	-269.28	94.00	1.86	0.22	17.07
	4817.00	6.47	100.33	N/A	56.36	279.27	4799.68	-279.69	95.00	0.16	0.15	0.64
	4912.00	6.42	79.18	N/A	56.39	289.75	4894.09	-290.18	95.00	2.49	-0.05	-22.26
	5006.00	5.99	63.06	N/A	59.60	299.29	4987.55	-299.73	94.00	1.90	-0.46	-17.15
	5101.00	6.29	83.66	N/A	62.42	308.88	5082.01	-309.35	95.00	2.33	0.32	21.68
	5195.00	5.97	95.54	N/A	62.52	318.86	5175.48	-319.33	94.00	1.39	-0.34	12.64
	5290.00	6.41	98.47	N/A	61.26	329.02	5269.92	-329.49	95.00	0.57	0.46	3.08
	5385.00	6.13	85.32	N/A	60.89	339.33	5364.36	-339.78	95.00	1.54	-0.29	-13.84
	5480.00	6.08	66.57	N/A	63.31	349.00	5458.83	-349.47	95.00	2.09	-0.05	-19.74
	5574.00	6.54	57.00	N/A	68.20	358.06	5552.26	-358.57	94.00	1.22	0.49	-10.18
	5669.00	6.38	56.32	N/A	74.08	366.99	5646.66	-367.54	95.00	0.19	-0.17	-0.72
	5763.00	6.76	56.64	N/A	80.02	375.95	5740.04	-376.56	94.00	0.41	0.40	0.34
	5858.00	6.54	60.84	N/A	85.73	385.35	5834.40	-385.99	95.00	0.56	-0.23	4.42
	5953.00	6.82	66.11	N/A	90.65	395.23	5928.76	-395.91	95.00	0.71	0.29	5.55
	6047.00	7.73	316.04	N/A	97.48	395.95	6022.34	-396.68	94.00	12.69	0.97	-117.10
	6142.00	16.10	306.42	N/A	109.93	380.88	6115.22	-381.72	95.00	9.03	8.81	-10.13
	6237.00	18.74	274.00	N/A	118.83	355.00	6206.06	-355.90	95.00	10.44	2.78	-34.13
	6331.00	22.93	262.13	N/A	117.38	321.76	6293.94	-322.66	94.00	6.31	4.46	-12.63
	6426.00	30.86	264.46	N/A	112.48	279.11	6378.60	-279.97	95.00	8.42	8.35	2.45
	6521.00	36.37	271.55	N/A	110.89	226.64	6457.71	-227.49	95.00	7.11	5.80	7.46
	6616.00	46.00	273.99	N/A	114.04	164.25	6529.13	-165.12	95.00	10.28	10.14	2.57
	6710.00	54.20	272.86	N/A	118.30	92.33	6589.37	-93.23	94.00	8.77	8.72	-1.20
	6805.00	60.70	270.44	N/A	120.54	12.33	6640.46	-13.26	95.00	7.17	6.84	-2.55
	6900.00	67.89	266.97	N/A	118.53	-73.17	6681.65	72.26	95.00	8.25	7.57	-3.65
	6994.00	79.58	266.71	N/A	113.56	-163.11	6707.93	162.24	94.00	12.44	12.44	-0.28
	7089.00	90.19	266.68	N/A	108.11	-257.44	6716.39	256.60	95.00	11.17	11.17	-0.03
	7184.00	90.16	268.07	N/A	103.76	-352.34	6716.10	351.53	95.00	1.46	-0.03	1.46
	7278.00	90.37	266.88	N/A	99.62	-446.25	6715.67	445.47	94.00	1.29	0.22	-1.27
	7373.00	90.16	265.24	N/A	93.09	-541.02	6715.23	540.29	95.00	1.74	-0.22	-1.73
	7467.00	90.22	264.54	N/A	84.72	-634.64	6714.92	633.97	94.00	0.75	0.06	-0.74
	7562.00	90.16	264.90	N/A	75.98	-729.24	6714.60	728.63	95.00	0.38	-0.06	0.38
	7657.00	90.34	266.97	N/A	69.25	-823.99	6714.19	823.44	95.00	2.19	0.19	2.18
	7751.00	90.13	268.25	N/A	65.33	-917.91	6713.80	917.38	94.00	1.38	-0.22	1.36
	7846.00	90.28	269.99	N/A	63.87	-1012.89	6713.46	1012.37	95.00	1.84	0.16	1.83
	7940.00	90.13	270.19	N/A	64.01	-1106.89	6713.12	1106.37	94.00	0.27	-0.16	0.21
	8035.00	90.28	270.49	N/A	64.58	-1201.89	6712.78	1201.36	95.00	0.35	0.16	0.32
	8129.00	90.00	269.19	N/A	64.32	-1295.89	6712.55	1295.36	94.00	1.41	-0.30	-1.38
	8224.00	89.79	269.82	N/A	63.49	-1390.88	6712.73	1390.35	95.00	0.70	-0.22	0.66
	8319.00	90.13	270.37	N/A	63.65	-1485.88	6712.79	1485.35	95.00	0.68	0.36	0.58
	8414.00	89.91	271.07	N/A	64.85	-1580.87	6712.76	1580.33	95.00	0.77	-0.23	0.74
	8509.00	89.97	271.14	N/A	66.68	-1675.86	6712.86	1675.30	95.00	0.10	0.06	0.07
	8603.00	89.91	271.31	N/A	68.69	-1769.84	6712.96	1769.26	94.00	0.19	-0.06	0.18
	8698.00	90.03	271.29	N/A	70.84	-1864.81	6713.01	1864.21	95.00	0.13	0.13	-0.02
	8793.00	90.03	270.96	N/A	72.71	-1959.79	6712.96	1959.18	95.00	0.35	0.00	-0.35
	8887.00	89.85	270.60	N/A	73.99	-2053.78	6713.06	2053.15	94.00	0.43	-0.19	-0.38
	8982.00	89.91	269.42	N/A	74.00	-2148.78	6713.26	2148.15	95.00	1.24	0.06	-1.24
	9077.00	89.91	270.54	N/A	73.97	-2243.78	6713.41	2243.15	95.00	1.18	0.00	1.18
	9171.00	90.00	270.70	N/A	74.99	-2337.77	6713.48	2337.13	94.00	0.20	0.10	0.17
	9266.00	90.03	271.00	N/A	76.40	-2432.76	6713.45	2432.11	95.00	0.32	0.03	0.32
	9361.00	89.94	270.31	N/A	77.48	-2527.76	6713.48	2527.09	95.00	0.73	-0.09	-0.73
	9455.00	90.03	270.03	N/A	77.76	-2621.76	6713.50	2621.08	94.00	0.31	0.10	-0.30
	9550.00	89.91	269.59	N/A	77.45	-2716.76	6713.55	2716.08	95.00	0.48	-0.13	-0.46

	9645.00	90.06	268.82	N/A	76.13	-2811.75	6713.58	2811.08	95.00	0.83	0.16	-0.81
	9739.00	89.85	267.44	N/A	73.06	-2905.69	6713.65	2905.05	94.00	1.48	-0.22	-1.47
	9834.00	89.91	266.93	N/A	68.40	-3000.58	6713.85	2999.96	95.00	0.54	0.06	-0.54
	9929.00	89.91	265.98	N/A	62.52	-3095.40	6714.00	3094.82	95.00	1.00	0.00	-1.00
	10023.00	90.03	266.96	N/A	56.74	-3189.22	6714.05	3188.69	94.00	1.05	0.13	1.04
	10118.00	89.88	267.38	N/A	52.04	-3284.10	6714.12	3283.60	95.00	0.47	-0.16	0.44
	10213.00	90.06	266.71	N/A	47.15	-3378.97	6714.17	3378.51	95.00	0.73	0.19	-0.71
	10307.00	89.97	265.93	N/A	41.11	-3472.78	6714.15	3472.36	94.00	0.84	-0.10	-0.83
	10403.00	89.91	265.61	N/A	34.03	-3568.52	6714.25	3568.15	96.00	0.34	-0.06	-0.33
	10497.00	89.85	266.87	N/A	27.87	-3662.31	6714.45	3661.99	94.00	1.34	-0.06	1.34
	10592.00	90.13	268.40	N/A	23.95	-3757.23	6714.46	3756.93	95.00	1.64	0.29	1.61
	10686.00	89.79	269.40	N/A	22.14	-3851.21	6714.53	3850.93	94.00	1.12	-0.36	1.06
	10781.00	89.82	266.87	N/A	19.05	-3946.15	6714.85	3945.89	95.00	2.66	0.03	-2.66
	10876.00	89.85	263.20	N/A	10.83	-4040.78	6715.13	4040.58	95.00	3.86	0.03	-3.86
	10970.00	89.82	261.18	N/A	-1.94	-4133.90	6715.40	4133.79	94.00	2.15	-0.03	-2.15
	11065.00	89.85	267.05	N/A	-11.68	-4228.36	6715.67	4228.32	95.00	6.18	0.03	6.18
	11159.00	90.09	267.27	N/A	-16.33	-4322.24	6715.72	4322.24	94.00	0.35	0.26	0.23
	11254.00	90.03	266.07	N/A	-21.85	-4417.08	6715.62	4417.12	95.00	1.26	-0.06	-1.26
	11349.00	89.97	270.34	N/A	-24.83	-4512.01	6715.62	4512.07	95.00	4.50	-0.06	4.49
	11443.00	90.03	272.79	N/A	-22.26	-4605.97	6715.62	4606.00	94.00	2.61	0.06	2.61
	11538.00	90.37	274.17	N/A	-16.49	-4700.79	6715.29	4700.78	95.00	1.50	0.36	1.45
	11633.00	90.19	274.29	N/A	-9.49	-4795.53	6714.83	4795.46	95.00	0.23	-0.19	0.13
	11727.00	90.28	271.78	N/A	-4.51	-4889.39	6714.44	4889.28	94.00	2.67	0.10	-2.67
	11822.00	90.00	270.31	N/A	-2.78	-4984.37	6714.21	4984.25	95.00	1.58	-0.29	-1.55
	11917.00	90.16	271.26	N/A	-1.48	-5079.36	6714.07	5079.22	95.00	1.01	0.17	1.00
	12011.00	90.28	271.13	N/A	0.48	-5173.34	6713.71	5173.19	94.00	0.19	0.13	-0.14
	12106.00	89.91	271.08	N/A	2.32	-5268.32	6713.56	5268.15	95.00	0.39	-0.39	-0.05
	12201.00	90.16	271.42	N/A	4.39	-5363.30	6713.50	5363.11	95.00	0.44	0.26	0.36
	12296.00	90.00	271.28	N/A	6.63	-5458.27	6713.37	5458.06	95.00	0.22	-0.17	-0.15
	12390.00	90.28	270.74	N/A	8.28	-5552.26	6713.14	5552.03	94.00	0.65	0.30	-0.57
	12485.00	90.06	270.71	N/A	9.49	-5647.25	6712.85	5647.01	95.00	0.23	-0.23	-0.03
	12580.00	90.19	269.72	N/A	9.84	-5742.25	6712.65	5742.00	95.00	1.05	0.14	-1.04
	12674.00	89.69	268.63	N/A	8.49	-5836.24	6712.75	5836.00	94.00	1.28	-0.53	-1.16
	12769.00	90.16	267.13	N/A	4.97	-5931.17	6712.87	5930.96	95.00	1.65	0.49	-1.58
	12864.00	89.85	267.47	N/A	0.50	-6026.06	6712.86	6025.88	95.00	0.48	-0.33	0.36
	12959.00	89.94	267.94	N/A	-3.30	-6120.99	6713.04	6120.83	95.00	0.50	0.09	0.49
	13054.00	89.91	268.83	N/A	-5.98	-6215.95	6713.16	6215.81	95.00	0.94	-0.03	0.94
	13148.00	89.91	269.84	N/A	-7.07	-6309.94	6713.31	6309.81	94.00	1.07	0.00	1.07
	13243.00	90.19	270.49	N/A	-6.80	-6404.94	6713.22	6404.80	95.00	0.74	0.29	0.68
	13337.00	89.97	269.01	N/A	-7.21	-6498.94	6713.09	6498.80	94.00	1.59	-0.23	-1.57
	13432.00	90.03	268.92	N/A	-8.93	-6593.92	6713.09	6593.79	95.00	0.11	0.06	-0.09
	13527.00	90.06	269.40	N/A	-10.32	-6688.91	6713.02	6688.79	95.00	0.51	0.03	0.51
	13622.00	90.09	271.06	N/A	-9.94	-6783.91	6712.89	6783.78	95.00	1.75	0.03	1.75
	13716.00	89.94	272.15	N/A	-7.30	-6877.87	6712.87	6877.72	94.00	1.17	-0.16	1.16
	13811.00	90.12	272.03	N/A	-3.84	-6972.80	6712.82	6972.63	95.00	0.23	0.19	-0.13
	13906.00	90.15	270.01	N/A	-2.15	-7067.78	6712.60	7067.59	95.00	2.13	0.03	-2.13
	14000.00	89.75	270.36	N/A	-1.85	-7161.78	6712.68	7161.59	94.00	0.57	-0.43	0.37
	14095.00	89.97	269.03	N/A	-2.35	-7256.78	6712.91	7256.58	95.00	1.42	0.23	-1.40
	14189.00	89.85	268.86	N/A	-4.08	-7350.76	6713.06	7350.58	94.00	0.22	-0.13	-0.18
	14284.00	89.66	268.03	N/A	-6.66	-7445.73	6713.46	7445.56	95.00	0.90	-0.20	-0.87
	14379.00	89.88	268.57	N/A	-9.48	-7540.68	6713.85	7540.53	95.00	0.61	0.23	0.57
	14473.00	90.09	270.27	N/A	-10.43	-7634.67	6713.87	7634.53	94.00	1.82	0.22	1.81
	14568.00	90.00	272.85	N/A	-7.84	-7729.63	6713.80	7729.46	95.00	2.72	-0.09	2.72
	14663.00	90.00	272.14	N/A	-3.71	-7824.54	6713.80	7824.34	95.00	0.75	0.00	-0.75
	14758.00	90.03	268.78	N/A	-2.95	-7919.52	6713.77	7919.31	95.00	3.54	0.03	-3.54

	14852.00	90.00	273.50	N/A	-1.08	-8013.48	6713.75	8013.25	94.00	5.02	-0.03	5.02
	14947.00	89.97	271.99	N/A	3.47	-8108.37	6713.77	8108.10	95.00	1.59	-0.03	-1.59
	15041.00	90.15	268.27	N/A	3.69	-8202.35	6713.67	8202.08	94.00	3.96	0.19	-3.96
	15136.00	90.09	267.24	N/A	-0.03	-8297.28	6713.47	8297.03	95.00	1.09	-0.06	-1.08
	15230.00	90.12	267.16	N/A	-4.63	-8391.16	6713.30	8390.95	94.00	0.09	0.03	-0.09
	15325.00	90.03	268.07	N/A	-8.58	-8486.08	6713.18	8485.90	95.00	0.96	-0.09	0.96
	15420.00	89.94	268.50	N/A	-11.42	-8581.04	6713.20	8580.87	95.00	0.46	-0.09	0.45
	15514.00	89.66	266.80	N/A	-15.28	-8674.95	6713.53	8674.82	94.00	1.83	-0.30	-1.81
	15609.00	89.85	266.99	N/A	-20.42	-8769.81	6713.94	8769.71	95.00	0.28	0.20	0.20
	15704.00	89.91	266.51	N/A	-25.81	-8864.66	6714.13	8864.60	95.00	0.51	0.06	-0.51
	15798.00	89.97	265.20	N/A	-32.60	-8958.41	6714.23	8958.40	94.00	1.40	0.06	-1.39
	15893.00	89.88	267.73	N/A	-38.46	-9053.22	6714.36	9053.25	95.00	2.66	-0.09	2.66
	15987.00	89.81	268.12	N/A	-41.86	-9147.16	6714.61	9147.21	94.00	0.42	-0.07	0.41
	16082.00	90.12	267.59	N/A	-45.42	-9242.09	6714.67	9242.17	95.00	0.65	0.33	-0.56
	16177.00	89.85	266.85	N/A	-50.03	-9336.98	6714.69	9337.09	95.00	0.83	-0.28	-0.78
	16271.00	89.94	266.76	N/A	-55.27	-9430.84	6714.87	9430.98	94.00	0.14	0.10	-0.10
	16366.00	89.97	266.43	N/A	-60.91	-9525.67	6714.94	9525.85	95.00	0.35	0.03	-0.35
	16461.00	89.81	268.15	N/A	-65.40	-9620.56	6715.12	9620.78	95.00	1.82	-0.17	1.81
	16555.00	89.94	266.43	N/A	-69.84	-9714.45	6715.33	9714.70	94.00	1.84	0.14	-1.83
	16650.00	90.12	267.84	N/A	-74.59	-9809.33	6715.28	9809.61	95.00	1.50	0.19	1.48
	16745.00	89.81	270.96	N/A	-75.59	-9904.31	6715.34	9904.60	95.00	3.30	-0.33	3.28
	16839.00	89.94	271.19	N/A	-73.82	-9998.29	6715.54	9998.57	94.00	0.28	0.14	0.24
	16934.00	90.06	270.44	N/A	-72.47	-10093.28	6715.54	10093.54	95.00	0.80	0.13	-0.79
	17029.00	89.91	270.39	N/A	-71.78	-10188.28	6715.57	10188.53	95.00	0.17	-0.16	-0.05
	17123.00	89.97	270.94	N/A	-70.69	-10282.27	6715.67	10282.51	94.00	0.59	0.06	0.59
	17218.00	90.00	274.36	N/A	-66.30	-10377.16	6715.69	10377.36	95.00	3.60	0.03	3.60
	17312.00	90.15	278.23	N/A	-56.00	-10470.57	6715.57	10470.70	94.00	4.12	0.16	4.12
	17407.00	90.12	272.35	N/A	-47.24	-10565.13	6715.34	10565.18	95.00	6.19	-0.03	-6.19
	17501.00	90.28	271.28	N/A	-44.26	-10659.08	6715.02	10659.10	94.00	1.15	0.17	-1.14
	17596.00	90.12	269.95	N/A	-43.24	-10754.07	6714.68	10754.09	95.00	1.41	-0.17	-1.40
	17635.00	90.12	268.80	N/A	-43.67	-10793.07	6714.60	10793.08	39.00	2.95	0.00	-2.95
Projection	17659.00	90.12	268.80	N/A	-44.17	-10817.06	6714.55	10817.08	24.00	0.00	0.00	0.00