

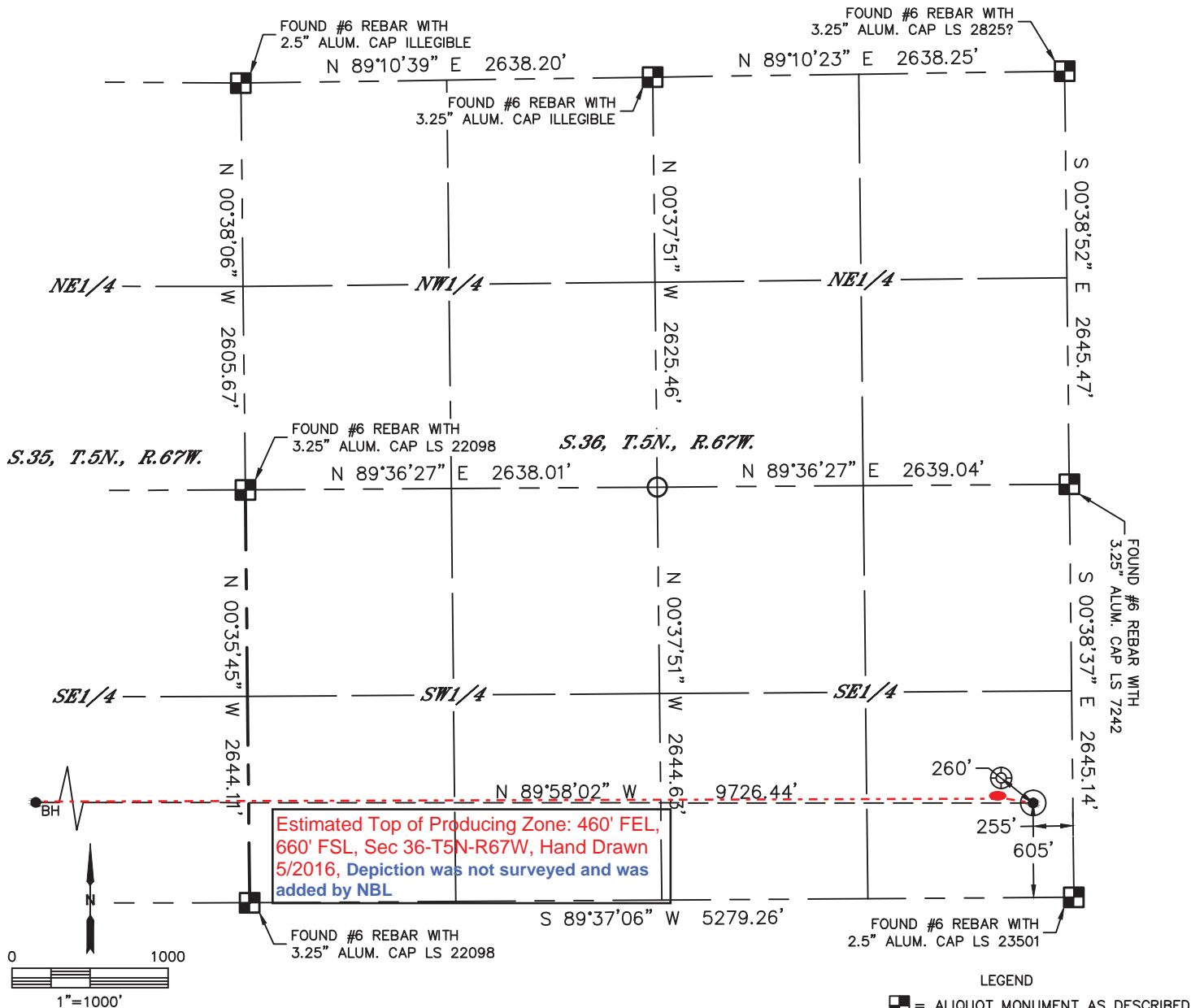


Lat40°, Inc. 6250 W. 10th Street, Unit 2, Greeley, CO 970-515-5294

# WELL LOCATION CERTIFICATE

BONA STATE N35-620

SECTION: 36  
TOWNSHIP: 5N  
RANGE: 67W  
6TH. P.M.  
WELD COUNTY, CO



CLIENT: NOBLE ENERGY						LANDMAN: NICK HAFFNER					
INSTRUMENT OPERATOR: BRIAN ROTTINGHAUS						SURVEY DATE: 3/29/2016		SURFACE USE: PASTURE			
SHL FOOTAGE				SHL LAT °		SHL LONG °		SHL PDOP	SHL ELEV (FT.)	SHL 1/4/1/4	SHL S-T-R
605	FSL	255	FEL	40.35047		-104.83290		1.6	4825	SESE	36-5-67

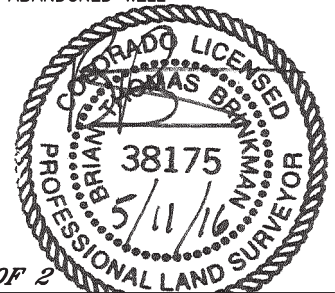
BHL FOOTAGE				BHL LAT °	BHL LONG °	BHL S-T-R
660	FSL	535	FWL	40.35068	-104.86779	35-5-67

NEAREST EXISTING WELL IN SHL 1/4/1/4	
EXISTING STATE N 36-16	±260' NW
NEAREST CULTURAL ITEMS	
BUILDING	±1794' SW
BUILDING UNIT	±2021' S
HIGH OCCUPANCY BUILDING UNIT	5280'+
DESIGNATED OUTSIDE ACTIVITY AREA	5280'+
PUBLIC ROAD (COUNTY ROAD 25)	±284' NE
ABOVE GROUND UTILITY	±229' E
RAILROAD	5280'+
PROPERTY LINE	±255' E

## NOTE:

- 1) Bearings shown are Grid Bearings of the Colorado State Plane Coordinate System, North Zone, North American Datum 1983. The lineal dimensions as contained herein are based upon the "U.S. Survey Foot."
- 2) Distances to section lines measured at 90 degrees from said section lines.
- 3) Ground elevations are based on an observed GPS elevation (NAVD 1988 DATUM).
- 4) Latitude and Longitude shown are (NAD 83 DATUM).
- 5) IMPROVEMENTS: See LOCATION DRAWING for all visible improvements within 500' of oil and gas location.
- 6) This map does not represent a boundary survey.

- LEGEND
- = ALIQUOT MONUMENT AS DESCRIBED
  - = CALCULATED POSITION
  - = SURFACE HOLE LOCATION (SHL)
  - ▲ = ENTRY POINT LOCATION (EP)
  - BH = BOTTOM HOLE LOCATION (BHL)
  - ⊙ = EXISTING WELL
  - ⊙ = ABANDONED WELL



SHEET 1 OF 2

Brian T. Brinkman—On behalf of Lat40°, Inc.  
Colorado Licensed Professional Land Surveyor No. 38175  
DATE: 5/11/2016  
PROJECT#: 2016030

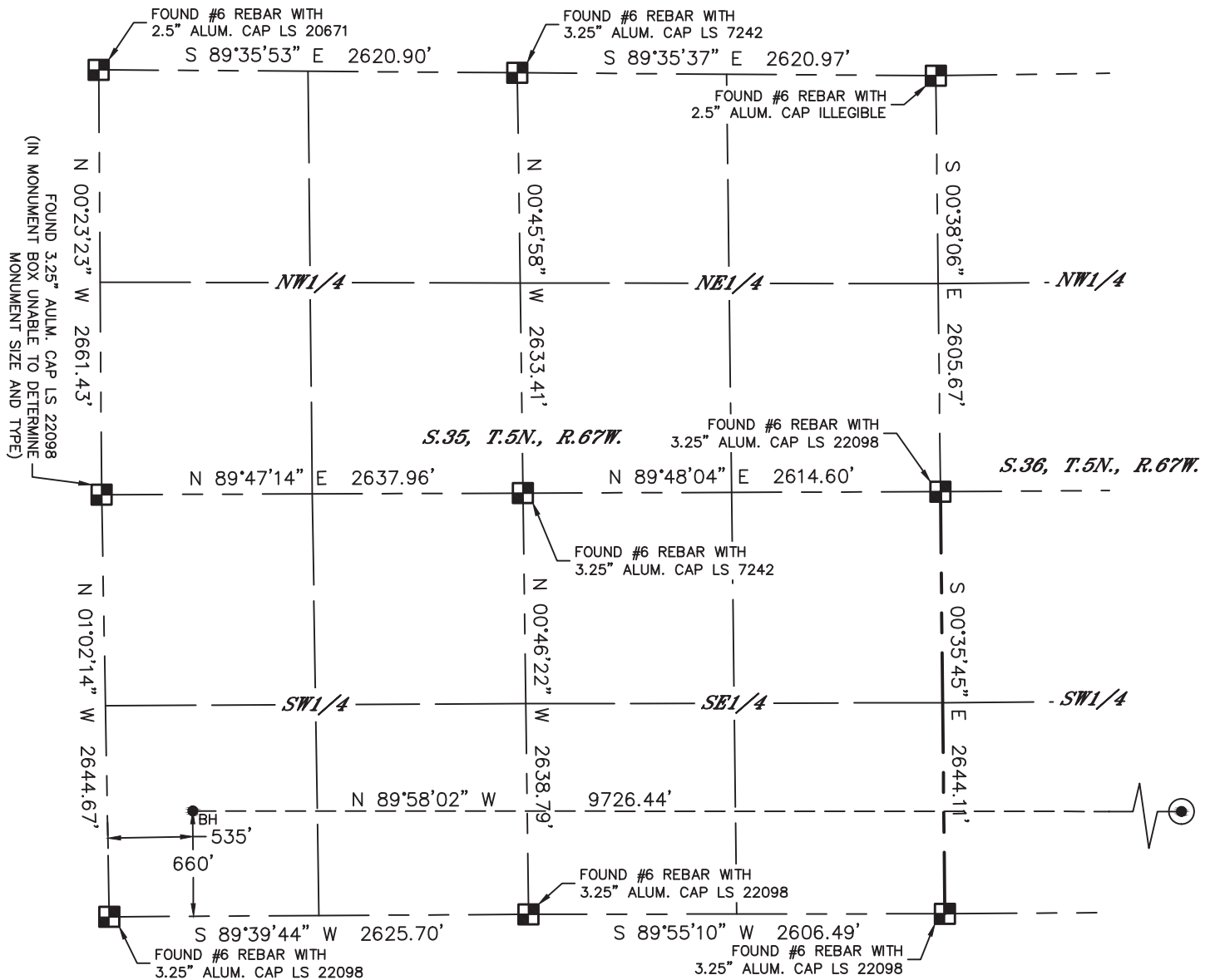


Lat40°, Inc. 6250 W. 10th Street, Unit 2, Greeley, CO 970-515-5294

# WELL LOCATION CERTIFICATE

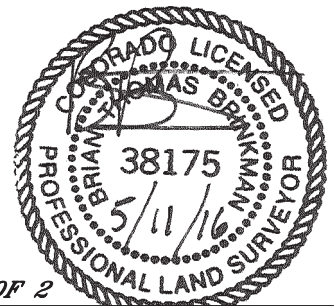
BONA STATE N35-620

SECTION: 36  
TOWNSHIP: 5N  
RANGE: 67W  
6TH. P.M.  
WELD COUNTY, CO



## LEGEND

- = ALIQUOT MONUMENT AS DESCRIBED
- = CALCULATED POSITION
- = SURFACE HOLE LOCATION (SHL)
- ▲ = ENTRY POINT LOCATION (EP)
- <sub>BH</sub> = BOTTOM HOLE LOCATION (BHL)
- ⊙ = EXISTING WELL
- ⊙ = ABANDONED WELL



SHEET 2 OF 2

Brian T. Brinkman—On behalf of Lat40°, Inc.  
Colorado Licensed Professional Land Surveyor No. 38175  
DATE: 5/11/2016  
PROJECT#: 2016030