


PROJECT DETAILS: North Park Basin

Geodetic System: US State Plane 1983
Datum: North American Datum 1983
Ellipsoid: GRS 1980
Zone: Colorado Northern Zone

System Datum: Mean Sea Level

G
↑
T
M



Azimuths to Grid North
True North: 0.60°
Magnetic North: 10.50°

Magnetic Field
Strength: 53179.4snT
Dip Angle: 66.96°
Date: 12/31/2009
Model: IGRF200510

CASING DETAILS

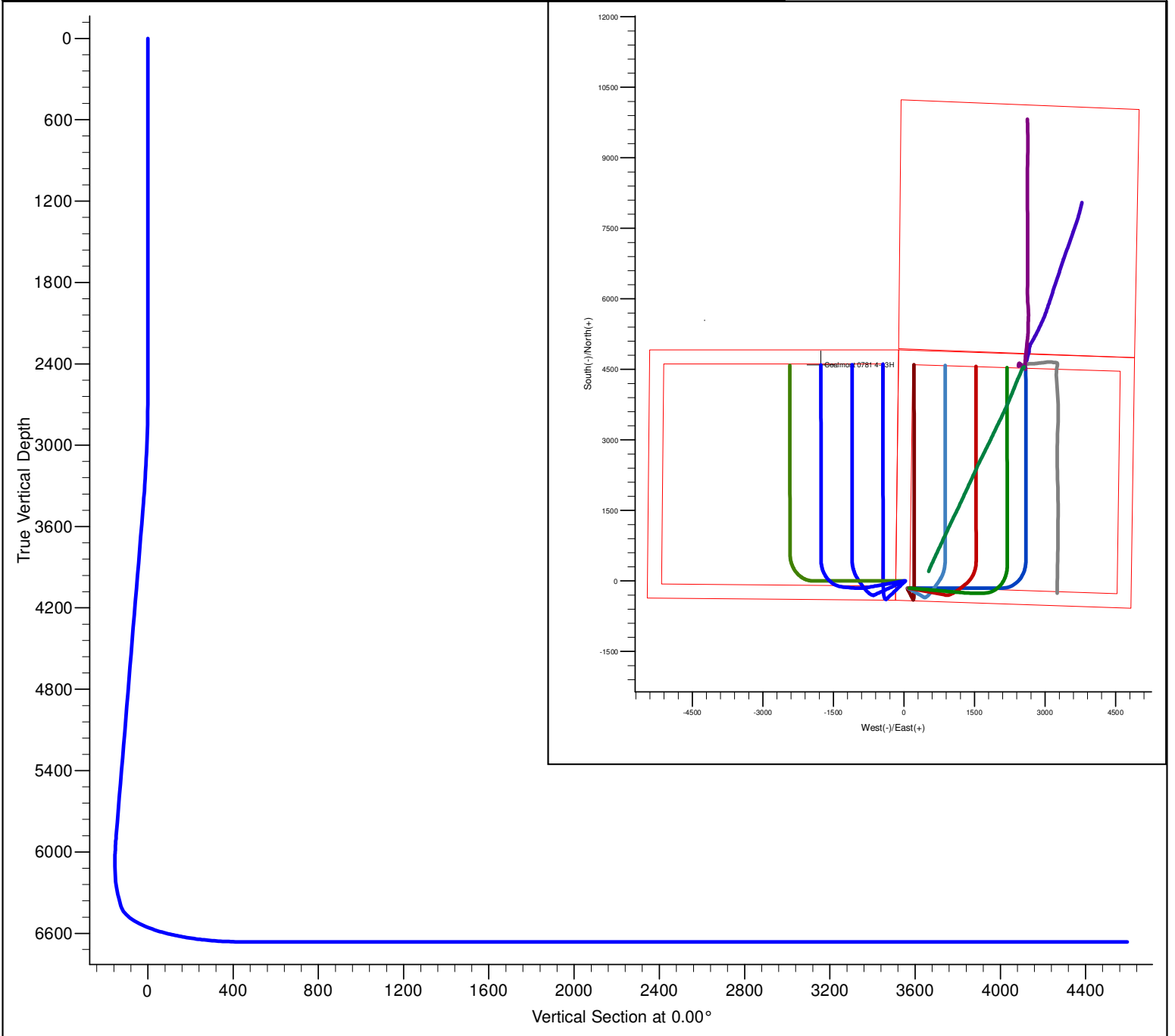
No casing data is available

DESIGN DETAILS: Design #1

0' Vertical Section coordinates

Type	Target	Azimuth	Origin	Type	N/S	E/W	From	TVD
Target	No Target (For command slot)	0.0	0.0		0.0	0.0		0.0

Project: North Park Basin
Site: T7N-R80W-S18
Well: Coalmont 0781 4-13H
Wellbore: Wellbore #1
Design: Design #1



SECTION DETAILS												
Sec	MD	Inc	Azi	TVD	+N/-S	+E/-W	Dleg	TFace	VSect	Target		
1	0.0	0.00	0.00	0.0	0.0	0.0	0.00	0.00	0.0			
2	2600.0	0.00	0.00	2600.0	0.0	0.0	0.00	0.00	0.0			
3	3433.4	16.67	259.99	3421.7	-20.9	-118.5	2.00	259.99	-20.9			
4	6022.9	16.67	259.99	5902.4	-150.0	-850.0	0.00	0.00	-150.0			
5	6574.2	60.00	275.75	6325.4	-139.3	-1181.9	8.00	19.75	-139.3			
6	6724.2	60.00	275.75	6400.4	-126.3	-1311.2	0.00	0.00	-126.3			
7	7574.1	90.00	359.96	6662.9	444.2	-1763.9	10.00	87.10	444.2	Coalmont 4-13H		
8	11725.1	90.00	359.96	6662.9	4595.2	-1766.5	0.00	0.00	4595.2	Coalmont 4-13H		