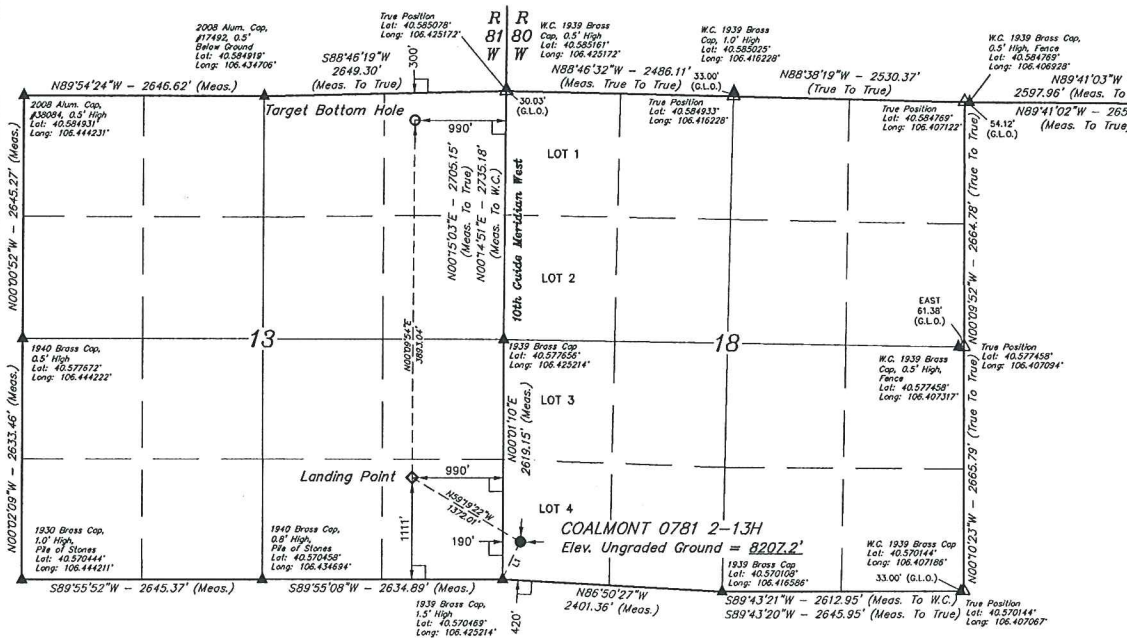


T7N, R80W, 6th P.M.

SandRidge Exploration & Production, LLC

COALMONT 0781 2-13H  
LOT 4, SECTION 18, T7N, R80W, 6th P.M.  
JACKSON COUNTY, COLORADO

BASIS OF BEARINGS  
BASIS OF BEARINGS IS A G.P.S. OBSERVATION  
BASIS OF ELEVATION  
SPOT ELEVATION AT THE SOUTHEAST CORNER OF SECTION 29,  
T7N, R80W, 6th P.M., TAKEN FROM THE COALMONT QUADRANGLE,  
COLORADO, JACKSON COUNTY 7.5 MINUTE QUAD.  
(TOPOGRAPHIC MAP) PUBLISHED BY THE UNITED STATES  
DEPARTMENT OF THE INTERIOR, GEOLOGICAL SURVEY. SAID  
ELEVATION IS MARKED AS BEING 8156 FEET



LINE TABLE		
LINE	DIRECTION	LENGTH
L1	N24°52'45"E	451.86'

LEGEND:

- 90° SYMBOL
- PROPOSED WELLHEAD
- LANDING POINT
- TARGET BOTTOM HOLE
- SECTION CORNERS LOCATED (NAD 83)
- SECTION CORNERS RE-ESTABLISHED (Not Set on Grounds) (NAD 83)

NAD 83 (SURFACE LOCATION)	NAD 83 (LANDING POINT)	NAD 83 (TARGET BOTTOM HOLE)
LATITUDE = 40°34'17.74" (40.571594)	LATITUDE = 40°34'24.65" (40.573514)	LATITUDE = 40°35'03.11" (40.584197)
LONGITUDE = 106°25'28.31" (106.424531)	LONGITUDE = 106°25'43.60" (106.428778)	LONGITUDE = 106°25'43.60" (106.428778)
NAD 27 (SURFACE LOCATION)	NAD 27 (LANDING POINT)	NAD 27 (TARGET BOTTOM HOLE)
LATITUDE = 40°34'17.82" (40.571617)	LATITUDE = 40°34'24.73" (40.573536)	LATITUDE = 40°35'03.18" (40.584217)
LONGITUDE = 106°25'28.19" (106.424519)	LONGITUDE = 106°25'41.48" (106.428189)	LONGITUDE = 106°25'41.33" (106.428153)
STATE PLANE NAD 83 (CO. NORTH)	STATE PLANE NAD 83 (CO. NORTH)	STATE PLANE NAD 83 (CO. NORTH)
N: 1453412.06 E: 2743165.29	N: 1453123.73 E: 2741992.96	N: 1457014.83 E: 2745911.75
STATE PLANE NAD 27 (CO. NORTH)	STATE PLANE NAD 27 (CO. NORTH)	STATE PLANE NAD 27 (CO. NORTH)
N: 452409.89 E: 1743371.63	N: 453121.55 E: 1742149.30	N: 457012.66 E: 1742200.05

PDOP = 1.4

REV: 3 07-14-16 M.D. (WELL NAME CHANGE)

**UINTAH**  
ENGINEERING & LAND SURVEYING

SURVEYED BY: DARREN SHANKS, G.W. 06-10-16  
DRAWN BY: T.B. 06-16-16

UELS, LLC  
Corporate Office \* 85 South 200 East  
Vernal, UT 84078 \* (435) 789-1017

SCALE  
1" = 1000'

**WELL LOCATION PLAT**