


PROJECT DETAILS: North Park Basin

Geodetic System: US State Plane 1983  
Datum: North American Datum 1983  
Ellipsoid: GRS 1980  
Zone: Colorado Northern Zone  
  
System Datum: Mean Sea Level

G  
↑  
T  
M



Azimuths to Grid North  
True North: 0.60°  
Magnetic North: 10.50°  
  
Magnetic Field  
Strength: 53179.4snT  
Dip Angle: 66.96°  
Date: 12/31/2009  
Model: IGRF200510

CASING DETAILS

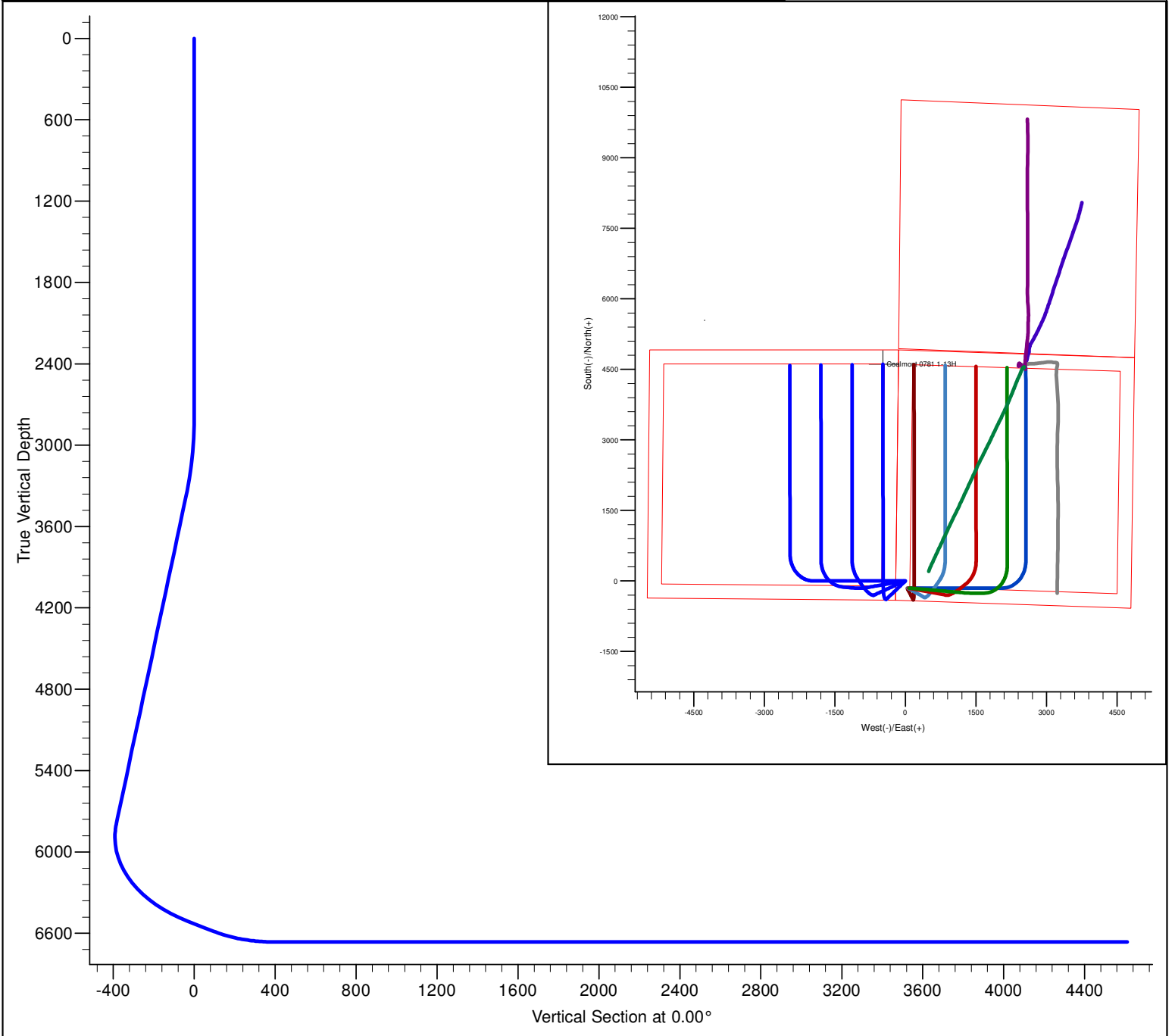
No casing data is available

DESIGN DETAILS: Design #1

0' Vertical Section coordinates

Type	Target	Azimuth	Origin	Type	N/S	E/W	From TVD
Target	No Target (For command slot)	0.0	0.0		0.0	0.0	0.0

Project: North Park Basin  
Site: T7N-R80W-S18  
Well: Coalmont 0781 1-13H  
Wellbore: Wellbore #1  
Design: Design #1



SECTION DETAILS											
Sec	MD	Inc	Azi	TVD	+N/-S	+E/-W	Dleg	TFace	VSect	Target	
1	0.0	0.00	0.00	0.0	0.0	0.0	0.00	0.00	0.0		
2	2800.0	0.00	0.00	2800.0	0.0	0.0	0.00	0.00	0.0		
3	3383.4	11.67	226.31	3379.4	-40.9	-42.8	2.00	226.31	-40.9		
4	5846.6	11.67	226.31	5791.7	-385.0	-403.0	0.00	0.00	-385.0		
5	6701.1	60.00	359.97	6511.2	-31.7	-474.3	8.00	137.62	-31.7	Coalmont 1-13H	
6	6851.1	60.00	359.97	6586.2	98.2	-474.4	0.00	0.00	98.2		
7	7151.1	90.00	359.97	6663.0	384.6	-474.6	10.00	0.00	384.6	Coalmont 1-13H	
8	11376.8	90.00	359.97	6663.0	4610.4	-476.7	0.00	0.00	4610.4	Coalmont 1-13H	