

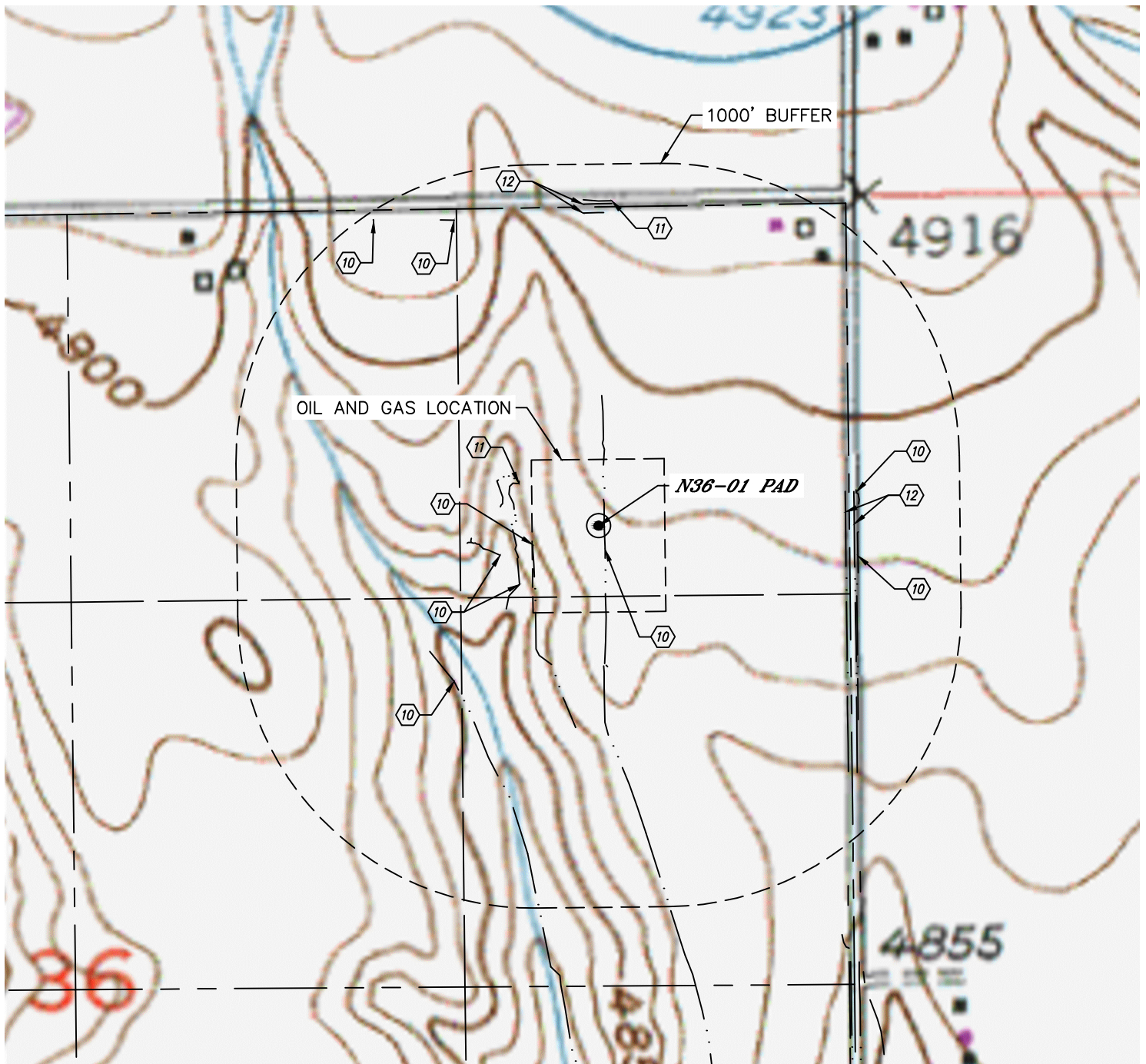


Lat40°, Inc. 6250 W. 10th Street, Unit 2, Greeley, CO 970-515-5294

HYDROLOGY MAP

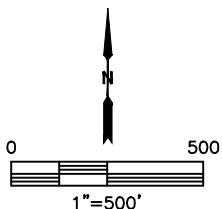
N36-01 PAD

SECTION: 36
TOWNSHIP: 5N
RANGE: 67W
6TH. P.M.
WELD COUNTY, CO



DISTANCES MEASURED FROM THE EDGE OF THE OIL AND GAS LOCATION.

- ⑩ DITCH (2) INSIDE LOCATION, 45' & 109' W, 354' SW, 649' & 652' E, 854' & 970' NW
- ⑪ LOW AREA 43' W, 875' N
- ⑫ BORROW DITCH 612' & 641' E, 835' & 865' N



DATE: 5/4/2016
PROJECT#: 2016030