

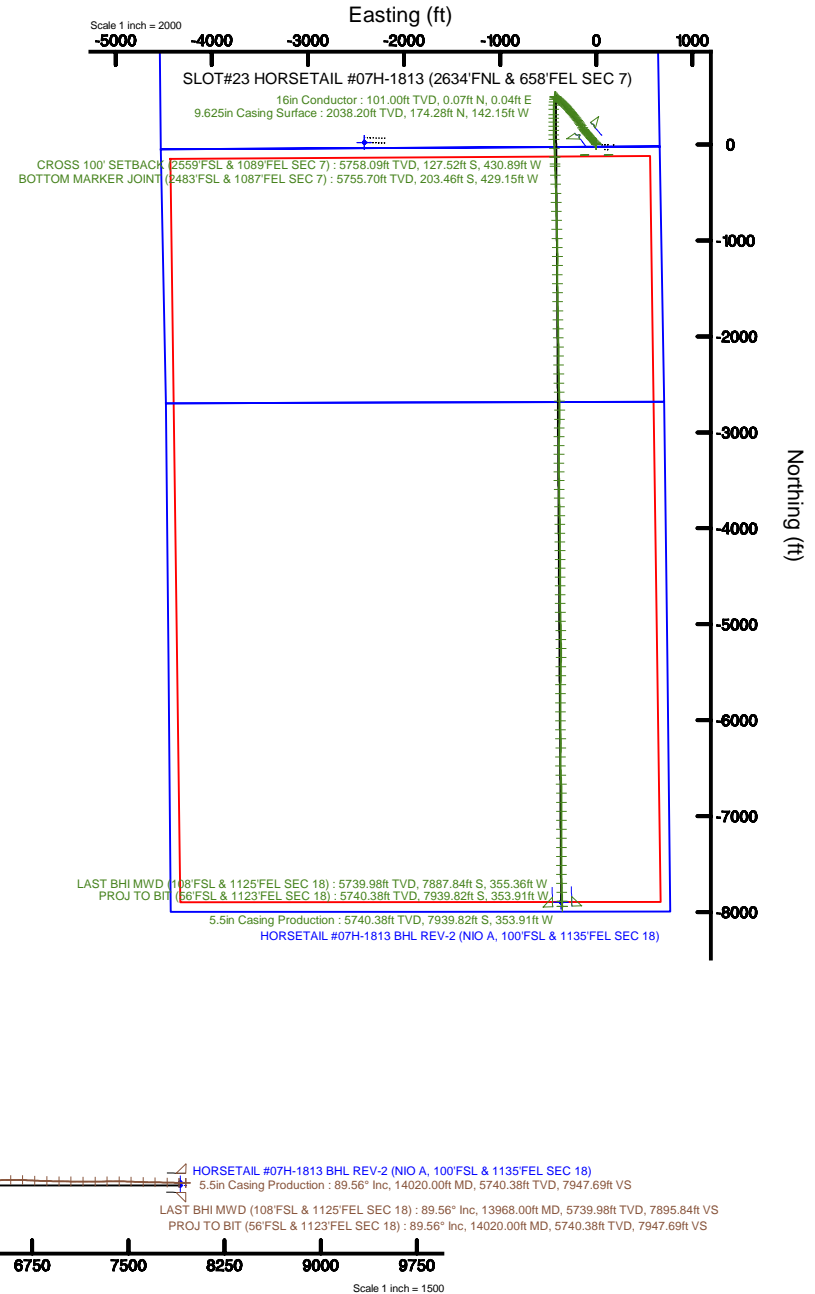
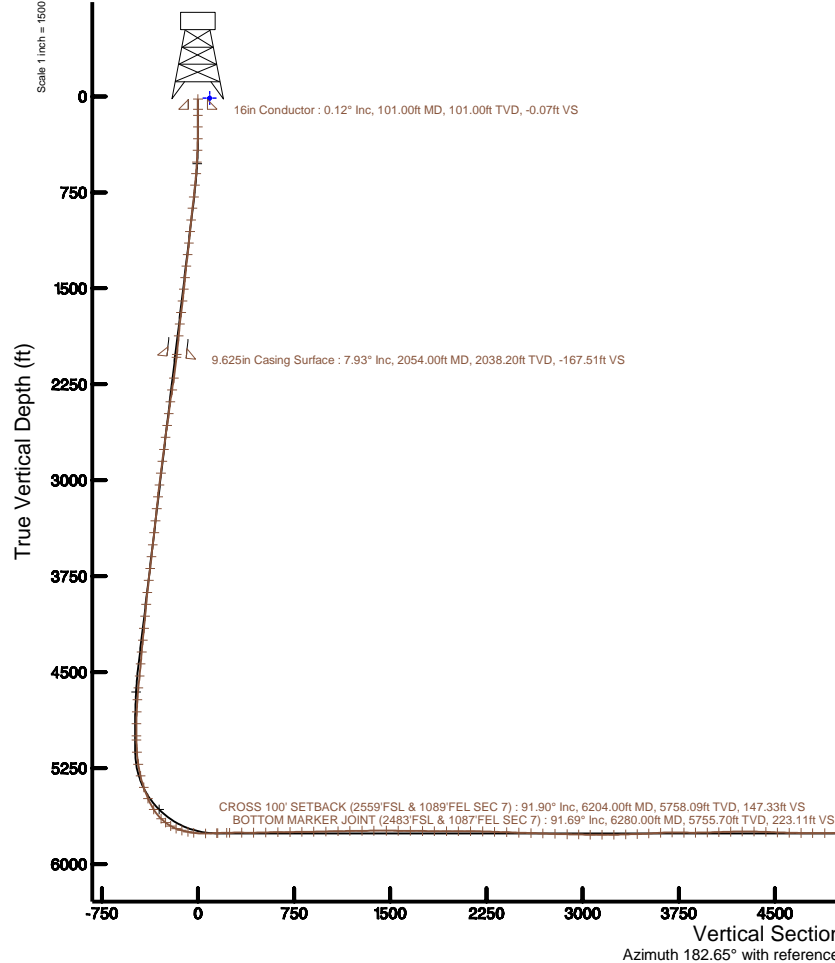
WHITING OIL & GAS CORPORATION

Location: COLORADO Slot: SLOT#23 HORSETAIL #07H-1813 (2634'FNL & 658'FEL SEC 7)
Field: WELD COUNTY Well: HORSETAIL #07H-1813
Facility: SEC.07-T10N-R57W Wellbore: HORSETAIL #07H-1813 PWB

Plot reference wellpath is HORSETAIL #07H-1813 REV-B.0 PWB	Grid System: NAD83 / Lambert Colorado SP, Northern Zone (501), US feet
True vertical depths are referenced to UNIT 406 (21) (RKB)	* - Wellpath was transformed from a different geodetic datum
Measured depths are referenced to UNIT 406 (21) (RKB)	North Reference: True north
UNIT 406 (21) (RKB) to Mean Sea Level: 4933 feet	Scale: True distance
Mean Sea Level to Mud line (At Slot: SLOT#23 HORSETAIL #07H-1813 (2634'FNL & 658'FEL SEC 7)): 0 feet	Depths are in feet
Coordinates are in feet referenced to Slot	Created by: waqjam on 2016-07-18
	Database: WA_DEN_Denver_Defn

Location Information

Facility Name				Grid East (US ft)	Grid North (US ft)	Latitude	Longitude
SEC.07-T10N-R57W				3471270.155	1558347.593	40°5'11.010"N	103°47'46.990"W
Slot	Local N (ft)	Local E (ft)	Grid East (US ft)	Grid North (US ft)	Latitude	Longitude	
SLOT#23 HORSETAIL #07H-1813 (2634'FNL & 658'FEL SEC 7)	-21.13	2413.72	3473683.860	1558372.832	40°5'12.890"N	103°47'15.580"W	
UNIT 406 (21) (RKB) to Mud line (At Slot: SLOT#23 HORSETAIL #07H-1813 (2634'FNL & 658'FEL SEC 7))				4933ft			
Mean Sea Level to Mud line (At Slot: SLOT#23 HORSETAIL #07H-1813 (2634'FNL & 658'FEL SEC 7))				0ft			
UNIT 406 (21) (RKB) to Mean Sea Level				4933ft			





Actual Wellpath Report

HORSETAIL #07H-1813 AWP

Page 1 of 9



REFERENCE WELLPATH IDENTIFICATION

Operator	WHITING OIL & GAS CORPORATION	Slot	SLOT#23 HORSETAIL #07H-1813 (2634'FNL & 658'FEL SEC 7)
Area	COLORADO	Well	HORSETAIL #07H-1813
Field	WELD COUNTY	Wellbore	HORSETAIL #07H-1813 AWB
Facility	SEC.07-T10N-R57W		

REPORT SETUP INFORMATION

Projection System	NAD83 / Lambert Colorado SP, Northern Zone (501), US feet	Software System	WellArchitect® 5.0
North Reference	True	User	Wagnjam
Scale	1.000012	Report Generated	7/18/2016 at 12:26:17 PM
Convergence at slot	1.11° East	Database/Source file	WA_DEN_Denver_Defn/HORSETAIL_#07H-1813_AWP.xml

WELLPATH LOCATION

	Local coordinates		Grid coordinates		Geographic coordinates	
	North[ft]	East[ft]	Easting[US ft]	Northing[US ft]	Latitude	Longitude
Slot Location	-21.13	2413.72	3473683.86	1558372.83	40°51'12.800"N	103°47'15.580"W
Facility Reference Pt			3471270.16	1558347.59	40°51'13.010"N	103°47'46.990"W
Field Reference Pt			3471270.16	1558347.59	40°51'13.010"N	103°47'46.990"W

WELLPATH DATUM

Calculation method	Minimum curvature	UNIT 406 (21') (RKB) to Facility Vertical Datum	4933.00ft
Horizontal Reference Pt	Slot	UNIT 406 (21') (RKB) to Mean Sea Level	4933.00ft
Vertical Reference Pt	UNIT 406 (21') (RKB)	UNIT 406 (21') (RKB) to Mud Line at Slot (SLOT#23 HORSETAIL #07H-1813 (2634'FNL & 658'FEL SEC 7))	4933.00ft
MD Reference Pt	UNIT 406 (21') (RKB)	Section Origin	N 0.00, E 0.00 ft
Field Vertical Reference	Mean Sea Level	Section Azimuth	182.65°



Actual Wellpath Report

HORSETAIL #07H-1813 AWP

Page 2 of 9



REFERENCE WELLPATH IDENTIFICATION

Operator	WHITING OIL & GAS CORPORATION	Slot	SLOT#23 HORSETAIL #07H-1813 (2634'FNL & 658'FEL SEC 7)
Area	COLORADO	Well	HORSETAIL #07H-1813
Field	WELD COUNTY	Wellbore	HORSETAIL #07H-1813 AWB
Facility	SEC.07-T10N-R57W		

WELLPATH DATA (156 stations) † = interpolated/extrapolated station

MD [ft]	Inclination [°]	Azimuth [°]	TVD [ft]	Vert Sect [ft]	North [ft]	East [ft]	DLS [°/100ft]	Comments
0.00†	0.000	30.320	0.00	0.00	0.00	0.00	0.00	
21.00	0.000	30.320	21.00	0.00	0.00	0.00	0.00	
148.00	0.190	30.320	148.00	-0.19	0.18	0.11	0.15	
239.00	0.450	35.540	239.00	-0.62	0.60	0.39	0.29	
331.00	1.010	350.230	330.99	-1.72	1.70	0.46	0.83	
422.00	2.600	332.380	421.94	-4.28	4.32	-0.63	1.83	
514.00	3.930	328.410	513.79	-8.69	8.85	-3.25	1.47	
605.00	5.730	321.850	604.47	-14.71	15.08	-7.69	2.07	
696.00	7.960	318.310	694.81	-22.65	23.36	-14.69	2.49	
788.00	9.180	319.580	785.78	-32.57	33.70	-23.68	1.34	
878.00	8.920	317.940	874.66	-42.77	44.35	-33.01	0.41	
970.00	8.370	318.180	965.62	-52.62	54.63	-42.26	0.60	
1062.00	7.940	317.880	1056.69	-61.91	64.34	-50.98	0.47	
1153.00	9.390	316.270	1146.65	-71.49	74.36	-60.33	1.62	
1244.00	9.200	317.800	1236.45	-81.77	85.12	-70.35	0.34	
1335.00	8.920	316.620	1326.32	-91.82	95.63	-80.08	0.37	
1427.00	8.320	317.750	1417.28	-101.49	105.75	-89.45	0.68	
1518.00	7.790	317.910	1507.38	-110.54	115.20	-98.01	0.58	
1610.00	9.030	323.180	1598.39	-120.54	125.60	-106.52	1.59	
1702.00	9.270	322.840	1689.22	-131.80	137.29	-115.32	0.27	
1793.00	7.910	321.660	1779.19	-142.16	148.04	-123.64	1.51	
1885.00	6.260	326.290	1870.49	-150.98	157.18	-130.35	1.90	
2033.00	7.660	324.760	2017.40	-165.26	171.95	-140.52	0.95	
2219.00	10.030	327.760	2201.17	-188.33	195.78	-156.31	1.30	
2313.00	10.410	327.990	2293.68	-202.03	209.90	-165.18	0.41	
2407.00	10.150	327.430	2386.17	-215.78	224.08	-174.14	0.30	
2502.00	9.250	327.950	2479.81	-228.90	237.61	-182.70	0.95	
2596.00	10.300	320.490	2572.45	-241.34	250.50	-192.06	1.75	
2690.00	10.130	319.720	2664.96	-253.62	263.29	-202.75	0.23	
2785.00	9.740	319.570	2758.54	-265.61	275.78	-213.36	0.41	



Actual Wellpath Report

HORSETAIL #07H-1813 AWP

Page 3 of 9



REFERENCE WELLPATH IDENTIFICATION

Operator	WHITING OIL & GAS CORPORATION	Slot	SLOT#23 HORSETAIL #07H-1813 (2634'FNL & 658'FEL SEC 7)
Area	COLORADO	Well	HORSETAIL #07H-1813
Field	WELD COUNTY	Wellbore	HORSETAIL #07H-1813 AWB
Facility	SEC.07-T10N-R57W		

WELLPATH DATA (156 stations)

MD [ft]	Inclination [°]	Azimuth [°]	TVD [ft]	Vert Sect [ft]	North [ft]	East [ft]	DLS [°/100ft]	Comments
2879.00	9.760	320.750	2851.18	-277.34	288.00	-223.56	0.21	
2973.00	9.700	320.890	2943.83	-289.18	300.31	-233.59	0.07	
3068.00	9.690	319.530	3037.47	-300.98	312.61	-243.83	0.24	
3162.00	8.450	323.000	3130.29	-312.08	324.14	-253.12	1.44	
3256.00	7.160	325.050	3223.42	-322.04	334.46	-260.64	1.40	
3351.00	8.150	320.970	3317.57	-331.76	344.54	-268.27	1.19	
3445.00	9.220	317.470	3410.49	-342.04	355.27	-277.55	1.27	
3540.00	9.010	318.020	3504.29	-352.70	366.41	-287.68	0.24	
3634.00	8.750	319.390	3597.17	-363.14	377.31	-297.25	0.36	
3728.00	8.870	320.340	3690.06	-373.71	388.31	-306.53	0.20	
3822.00	9.700	316.920	3782.83	-384.59	399.68	-316.57	1.06	
3917.00	8.610	317.030	3876.62	-395.15	410.73	-326.88	1.15	
4011.00	8.030	314.410	3969.63	-404.45	420.47	-336.37	0.74	
4105.00	8.630	305.450	4062.64	-412.64	429.15	-346.80	1.52	
4200.00	9.700	311.010	4156.43	-421.47	438.54	-358.65	1.46	
4294.00	9.430	308.230	4249.12	-430.86	448.50	-370.67	0.57	
4388.00	8.570	307.740	4341.96	-439.37	457.55	-382.26	0.92	
4482.00	8.250	308.150	4434.95	-447.31	466.01	-393.10	0.35	
4577.00	7.930	320.370	4529.01	-456.12	475.27	-402.64	1.84	
4671.00	7.330	320.450	4622.18	-465.36	484.88	-410.60	0.64	
4765.00	5.710	314.070	4715.57	-472.89	492.76	-417.78	1.89	
4859.00	3.440	314.600	4809.26	-477.87	497.99	-423.14	2.42	
4953.00	2.220	283.430	4903.15	-480.10	500.40	-426.92	2.04	
5047.00	0.650	190.140	4997.13	-479.91	500.30	-428.79	2.50	
5081.00	0.470	213.220	5031.13	-479.60	499.99	-428.90	0.84	
5175.00	3.570	184.430	5125.06	-476.34	496.75	-429.34	3.37	
5270.00	8.630	192.680	5219.49	-466.36	486.84	-431.13	5.39	
5363.00	13.410	189.340	5310.75	-448.77	469.38	-434.41	5.18	
5457.00	18.280	186.190	5401.15	-423.21	443.95	-437.77	5.26	
5551.00	23.220	185.180	5489.03	-389.96	410.82	-441.04	5.27	



Actual Wellpath Report

HORSETAIL #07H-1813 AWP

Page 4 of 9



REFERENCE WELLPATH IDENTIFICATION

Operator	WHITING OIL & GAS CORPORATION	Slot	SLOT#23 HORSETAIL #07H-1813 (2634'FNL & 658'FEL SEC 7)
Area	COLORADO	Well	HORSETAIL #07H-1813
Field	WELD COUNTY	Wellbore	HORSETAIL #07H-1813 AWB
Facility	SEC.07-T10N-R57W		

WELLPATH DATA (156 stations) † = interpolated/extrapolated station

MD [ft]	Inclination [°]	Azimuth [°]	TVD [ft]	Vert Sect [ft]	North [ft]	East [ft]	DLS [°/100ft]	Comments
5646.00	32.000	179.860	5573.14	-346.02	366.91	-442.67	9.59	
5739.00	45.520	179.930	5645.49	-288.00	308.82	-442.57	14.54	
5786.00	53.120	180.260	5676.10	-252.42	273.20	-442.64	16.18	
5834.00	60.610	180.300	5702.32	-212.29	233.04	-442.83	15.60	
5881.00	68.690	179.590	5722.43	-169.90	190.60	-442.78	17.25	
5928.00	75.310	179.360	5736.95	-125.29	145.92	-442.37	14.09	
5975.00	78.980	179.400	5747.40	-79.55	100.11	-441.88	7.81	
6023.00	81.360	178.540	5755.59	-32.36	52.83	-441.03	5.26	
6116.00	91.930	175.050	5761.03	59.85	-39.72	-435.83	11.97	
6204.00†	91.902	178.514	5758.09	147.33	-127.52	-430.89	3.93	CROSS 100' SETBACK (2559'FSL & 1089'FEL SEC 7)
6210.00	91.900	178.750	5757.89	153.31	-133.51	-430.75	3.93	
6280.00†	91.691	178.638	5755.70	223.11	-203.46	-429.15	0.34	BOTTOM MARKER JOINT (2483'FSL & 1087'FEL SEC 7)
6304.00	91.620	178.600	5755.00	247.04	-227.44	-428.58	0.34	
6398.00	89.160	177.830	5754.36	340.75	-321.39	-425.65	2.74	
6492.00	90.420	177.920	5754.71	434.42	-415.32	-422.16	1.34	
6586.00	91.990	179.090	5752.73	528.15	-509.26	-419.71	2.08	
6681.00	90.700	178.850	5750.50	622.92	-604.22	-418.00	1.38	
6775.00	90.300	178.550	5749.68	716.69	-698.19	-415.87	0.53	
6869.00	90.760	178.500	5748.81	810.45	-792.16	-413.45	0.49	
6962.00	91.100	177.830	5747.30	903.15	-885.10	-410.47	0.81	
7056.00	91.650	178.410	5745.05	996.83	-979.02	-407.39	0.85	
7151.00	90.790	178.920	5743.02	1091.57	-1073.97	-405.18	1.05	
7245.00	91.470	179.630	5741.17	1185.39	-1167.94	-403.99	1.05	
7339.00	90.300	180.680	5739.72	1279.29	-1261.93	-404.24	1.67	
7433.00	90.210	179.920	5739.30	1373.21	-1355.93	-404.73	0.81	
7528.00	89.870	179.710	5739.23	1468.09	-1450.92	-404.43	0.42	
7622.00	89.680	179.220	5739.60	1561.94	-1544.92	-403.55	0.56	
7716.00	89.440	178.970	5740.32	1655.76	-1638.90	-402.07	0.37	
7811.00	88.920	178.910	5741.68	1750.55	-1733.88	-400.31	0.55	
7904.00	89.440	178.950	5743.01	1843.34	-1826.85	-398.57	0.56	



Actual Wellpath Report

HORSETAIL #07H-1813 AWP

Page 5 of 9



REFERENCE WELLPATH IDENTIFICATION			
Operator	WHITING OIL & GAS CORPORATION	Slot	SLOT#23 HORSETAIL #07H-1813 (2634'FNL & 658'FEL SEC 7)
Area	COLORADO	Well	HORSETAIL #07H-1813
Field	WELD COUNTY	Wellbore	HORSETAIL #07H-1813 AWB
Facility	SEC.07-T10N-R57W		

WELLPATH DATA (156 stations)									
MD [ft]	Inclination [°]	Azimuth [°]	TVD [ft]	Vert Sect [ft]	North [ft]	East [ft]	DLS [°/100ft]	Comments	
7999.00	90.000	179.630	5743.48	1938.18	-1921.84	-397.39	0.93		
8093.00	90.610	178.500	5742.98	2031.99	-2015.83	-395.86	1.37		
8187.00	89.690	178.550	5742.73	2125.75	-2109.79	-393.44	0.98		
8281.00	88.120	179.980	5744.53	2219.56	-2203.76	-392.24	2.26		
8375.00	87.840	179.500	5747.84	2313.38	-2297.70	-391.81	0.59		
8470.00	87.850	178.990	5751.41	2408.14	-2392.63	-390.56	0.54		
8564.00	88.090	178.980	5754.74	2501.89	-2486.56	-388.89	0.26		
8659.00	87.990	178.110	5757.99	2596.59	-2581.47	-386.48	0.92		
8753.00	88.210	177.820	5761.11	2690.23	-2675.36	-383.15	0.39		
8847.00	88.120	179.860	5764.12	2783.96	-2769.28	-381.25	2.17		
8942.00	88.490	181.870	5766.93	2878.87	-2864.23	-382.68	2.15		
9033.00	88.980	181.680	5768.94	2969.84	-2955.16	-385.50	0.58		
9124.00	89.010	180.640	5770.53	3060.79	-3046.13	-387.34	1.14		
9215.00	89.840	179.990	5771.45	3151.71	-3137.12	-387.84	1.16		
9307.00	91.260	180.090	5770.56	3243.61	-3229.11	-387.90	1.55		
9399.00	91.630	180.090	5768.24	3335.49	-3321.08	-388.05	0.40		
9490.00	92.000	179.770	5765.36	3426.34	-3412.04	-387.94	0.54		
9581.00	93.750	179.520	5760.80	3517.09	-3502.92	-387.37	1.94		
9673.00	92.890	179.520	5755.47	3608.80	-3594.76	-386.60	0.93		
9763.00	89.750	179.260	5753.40	3698.62	-3684.72	-385.65	3.50		
9855.00	89.250	178.220	5754.20	3790.40	-3776.69	-383.62	1.25		
9946.00	90.300	178.760	5754.56	3881.16	-3867.66	-381.23	1.30		
10038.00	91.690	179.580	5752.96	3972.97	-3959.63	-379.89	1.75		
10129.00	91.930	179.800	5750.09	4063.80	-4050.58	-379.40	0.36		
10220.00	91.690	179.430	5747.21	4154.63	-4141.54	-378.79	0.48		
10311.00	90.390	179.240	5745.56	4245.46	-4232.51	-377.73	1.44		
10403.00	88.610	179.930	5746.36	4337.32	-4324.50	-377.07	2.08		
10495.00	88.150	179.780	5748.96	4429.18	-4416.47	-376.83	0.53		
10587.00	87.560	179.770	5752.41	4520.99	-4508.40	-376.47	0.64		
10678.00	88.580	179.410	5755.47	4611.81	-4599.35	-375.82	1.19		



Actual Wellpath Report

HORSETAIL #07H-1813 AWP

Page 6 of 9



REFERENCE WELLPATH IDENTIFICATION

Operator	WHITING OIL & GAS CORPORATION	Slot	SLOT#23 HORSETAIL #07H-1813 (2634'FNL & 658'FEL SEC 7)
Area	COLORADO	Well	HORSETAIL #07H-1813
Field	WELD COUNTY	Wellbore	HORSETAIL #07H-1813 AWB
Facility	SEC.07-T10N-R57W		

WELLPATH DATA (156 stations)

MD [ft]	Inclination [°]	Azimuth [°]	TVD [ft]	Vert Sect [ft]	North [ft]	East [ft]	DLS [°/100ft]	Comments
10770.00	89.320	180.100	5757.16	4703.68	-4691.33	-375.43	1.10	
10860.00	89.940	179.710	5757.74	4793.57	-4781.32	-375.28	0.81	
10955.00	90.240	178.890	5757.59	4888.41	-4876.32	-374.12	0.92	
11049.00	90.670	178.000	5756.84	4982.15	-4970.28	-371.57	1.05	
11143.00	90.370	179.400	5755.99	5075.92	-5064.25	-369.44	1.52	
11237.00	90.430	179.030	5755.33	5169.75	-5158.24	-368.15	0.40	
11331.00	91.930	179.250	5753.40	5263.55	-5252.20	-366.74	1.61	
11426.00	92.300	180.820	5749.89	5358.38	-5347.14	-366.80	1.70	
11520.00	93.220	181.060	5745.37	5452.23	-5441.01	-368.34	1.01	
11615.00	91.410	180.730	5741.53	5547.10	-5535.92	-369.82	1.94	
11708.00	91.500	181.040	5739.17	5640.03	-5628.88	-371.25	0.35	
11803.00	91.740	180.510	5736.48	5734.94	-5723.83	-372.54	0.61	
11897.00	92.640	180.070	5732.89	5828.79	-5817.76	-373.01	1.07	
11991.00	90.790	179.780	5730.08	5922.64	-5911.71	-372.89	1.99	
12085.00	90.450	179.650	5729.06	6016.51	-6005.71	-372.42	0.39	
12179.00	91.440	179.570	5727.51	6110.36	-6099.69	-371.78	1.06	
12273.00	92.490	179.220	5724.29	6204.15	-6193.63	-370.79	1.18	
12368.00	90.510	180.290	5721.80	6298.99	-6288.59	-370.39	2.37	
12462.00	90.640	181.460	5720.86	6392.94	-6382.57	-371.82	1.25	
12557.00	90.850	178.620	5719.62	6487.82	-6477.55	-371.89	3.00	
12651.00	90.880	177.470	5718.20	6581.51	-6571.49	-368.68	1.22	
12745.00	88.480	177.670	5718.73	6675.13	-6665.39	-364.70	2.56	
12840.00	86.760	180.000	5722.67	6769.83	-6760.28	-362.77	3.05	
12935.00	88.820	180.610	5726.33	6864.67	-6855.20	-363.27	2.26	
13029.00	89.040	179.650	5728.09	6958.56	-6949.19	-363.49	1.05	
13123.00	89.070	178.650	5729.64	7052.37	-7043.16	-362.09	1.06	
13217.00	89.840	181.600	5730.53	7146.27	-7137.15	-362.30	3.24	
13311.00	90.090	179.350	5730.59	7240.19	-7231.14	-363.08	2.41	
13405.00	91.440	180.350	5729.34	7334.07	-7325.13	-362.83	1.79	
13499.00	89.690	180.050	5728.41	7427.97	-7419.12	-363.16	1.89	



Actual Wellpath Report

HORSETAIL #07H-1813 AWP

Page 7 of 9



REFERENCE WELLPATH IDENTIFICATION

Operator	WHITING OIL & GAS CORPORATION	Slot	SLOT#23 HORSETAIL #07H-1813 (2634'FNL & 658'FEL SEC 7)
Area	COLORADO	Well	HORSETAIL #07H-1813
Field	WELD COUNTY	Wellbore	HORSETAIL #07H-1813 AWB
Facility	SEC.07-T10N-R57W		

WELLPATH DATA (156 stations)

MD [ft]	Inclination [°]	Azimuth [°]	TVD [ft]	Vert Sect [ft]	North [ft]	East [ft]	DLS [°/100ft]	Comments
13593.00	87.400	180.230	5730.80	7521.85	-7513.08	-363.39	2.44	
13686.00	88.200	179.110	5734.37	7614.65	-7606.01	-362.85	1.48	
13780.00	89.500	178.560	5736.25	7708.42	-7699.97	-360.94	1.50	
13874.00	88.200	178.110	5738.14	7802.13	-7793.91	-358.21	1.46	
13968.00	89.560	178.410	5739.98	7895.84	-7887.84	-355.36	1.48	LAST BHI MWD (108'FSL & 1125'FEL SEC 18)
14020.00	89.560	178.410	5740.38	7947.69	-7939.82	-353.91	0.00	PROJ TO BIT (56'FSL & 1123'FEL SEC 18)

HOLE & CASING SECTIONS - Ref Wellbore: HORSETAIL #07H-1813 AWB Ref Wellpath: HORSETAIL #07H-1813 AWP

String/Diameter	Start MD [ft]	End MD [ft]	Interval [ft]	Start TVD [ft]	End TVD [ft]	Start N/S [ft]	Start E/W [ft]	End N/S [ft]	End E/W [ft]
16in Conductor	21.00	101.00	80.00	21.00	101.00	0.00	0.00	0.07	0.04
13.5in Open Hole	21.00	2066.00	2045.00	21.00	2050.09	0.00	0.00	175.65	-143.10
8.5in Open Hole	2066.00	14020.00	11954.00	2050.09	5740.38	175.65	-143.10	-7939.82	-353.91
9.625in Casing Surface	21.00	2054.00	2033.00	21.00	2038.20	0.00	0.00	174.28	-142.15
5.5in Casing Production	21.00	14020.00	13999.00	21.00	5740.38	0.00	0.00	-7939.82	-353.91



Actual Wellpath Report

HORSETAIL #07H-1813 AWP
Page 8 of 9



REFERENCE WELLPATH IDENTIFICATION			
Operator	WHITING OIL & GAS CORPORATION	Slot	SLOT#23 HORSETAIL #07H-1813 (2634'FNL & 658'FEL SEC 7)
Area	COLORADO	Well	HORSETAIL #07H-1813
Field	WELD COUNTY	Wellbore	HORSETAIL #07H-1813 AWB
Facility	SEC.07-T10N-R57W		

TARGETS								
Name	TVD [ft]	North [ft]	East [ft]	Grid East [US ft]	Grid North [US ft]	Latitude	Longitude	Shape
SEC.07-T10N-R57W	13.00	21.37	-2413.72	3471270.16	1558347.59	40°51'13.010"N	103°47'46.990"W	polygon
SEC.18-T10N-R57W	13.00	21.37	-2413.72	3471270.16	1558347.59	40°51'13.010"N	103°47'46.990"W	polygon
HORSETAIL #07H-1813 BHL REV-1 (NIO A, 100'FSL & 1135'FEL SEC 18)	5737.00	-7896.04	-365.90	3473470.49	1550471.12	40°49'54.780"N	103°47'20.340"W	point
HORSETAIL #07H-1813 BHL REV-2 (NIO A, 100'FSL & 1135'FEL SEC 18)	5760.00	-7896.04	-365.90	3473470.49	1550471.12	40°49'54.780"N	103°47'20.340"W	point
HORSETAIL FED #07F SOUTH HARDLINES 100'N 1/2 SECTION, 100' S/E/W	5853.00	21.37	-2413.72	3471270.16	1558347.59	40°51'13.010"N	103°47'46.990"W	polygon

WELLPATH COMPOSITION - Ref Wellbore: HORSETAIL #07H-1813 AWB				Ref Wellpath: HORSETAIL #07H-1813 AWP	
Start MD [ft]	End MD [ft]	Positional Uncertainty Model	Log Name/Comment		Wellbore
21.00	2033.00	Custom BHI NaviTrak (IFR1, Standard Rotating, SAG) (Rockies 0.03Gt model)	BHI/INTEQ NAVITRAK MWD ROCKIES GT, SURCON IFR SAG 13 1/2"<148-2033>		HORSETAIL #07H-1813 AWB
2033.00	13968.00	Custom BHI NaviTrak (IFR1, Standard Rotating, SAG) (Rockies 0.03Gt model)	BHI/INTEQ NAVITRAK MWD ROCKIES GT, SURCON IFR SAG 8 1/2"<2219-13968>		HORSETAIL #07H-1813 AWB
13968.00	14020.00	Blind Drilling (std)	Projection to bit		HORSETAIL #07H-1813 AWB



Actual Wellpath Report

HORSETAIL #07H-1813 AWP

Page 9 of 9



REFERENCE WELLPATH IDENTIFICATION			
Operator	WHITING OIL & GAS CORPORATION	Slot	SLOT#23 HORSETAIL #07H-1813 (2634'FNL & 658'FEL SEC 7)
Area	COLORADO	Well	HORSETAIL #07H-1813
Field	WELD COUNTY	Wellbore	HORSETAIL #07H-1813 AWB
Facility	SEC.07-T10N-R57W		

WELLPATH COMMENTS					
MD [ft]	Inclination [°]	Azimuth [°]	TVD [ft]	Comment	
6204.00	91.902	178.514	5758.09	CROSS 100' SETBACK (2559'FSL & 1089'FEL SEC 7)	
6280.00	91.691	178.638	5755.70	BOTTOM MARKER JOINT (2483'FSL & 1087'FEL SEC 7)	
13968.00	89.560	178.410	5739.98	LAST BHI MWD (108'FSL & 1125'FEL SEC 18)	
14020.00	89.560	178.410	5740.38	PROJ TO BIT (56'FSL & 1123'FEL SEC 18)	