

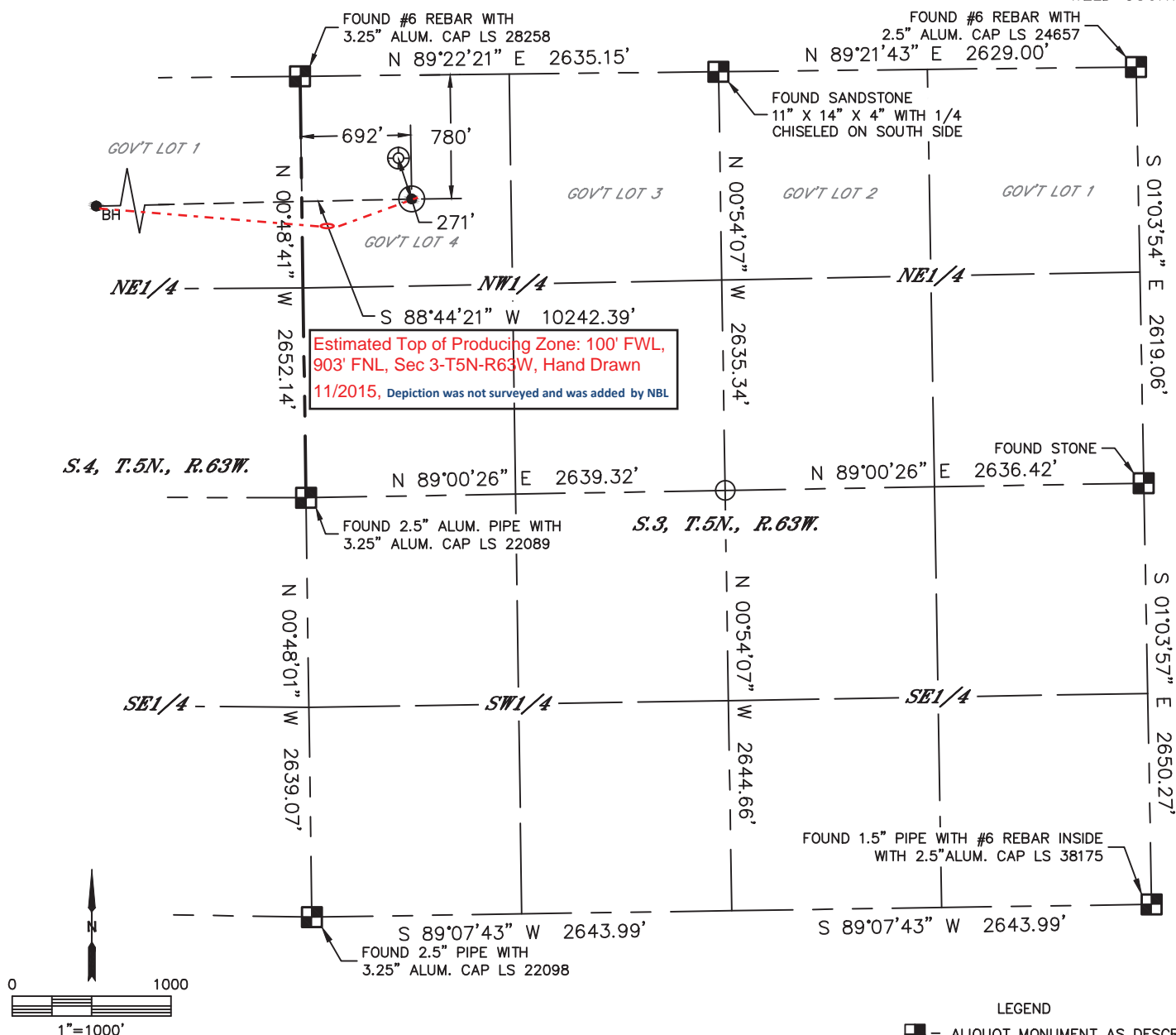


Lat40°, Inc. 6250 W. 10th Street, Unit 2, Greeley, CO 970-515-5294

# WELL LOCATION CERTIFICATE

WELLS RANCH STATE BB05-678

SECTION: 3  
TOWNSHIP: 5N  
RANGE: 63W  
6TH. P.M.  
WELD COUNTY, CO



CLIENT: NOBLE ENERGY INC					LANDMAN: GREG WILSON				
INSTRUMENT OPERATOR: CASEY KOHOUT					SURVEY DATE: 8/19/2015		SURFACE USE: RANGELAND		
SHL FOOTAGE				SHL LAT °	SHL LONG °	SHL PDOP	SHL ELEV (FT.)	SHL 1/4/1/4	SHL S-T-R
780	FNL	692	FWL	40.43352	-104.43007	2.0	4780	NWNW	3-5-63

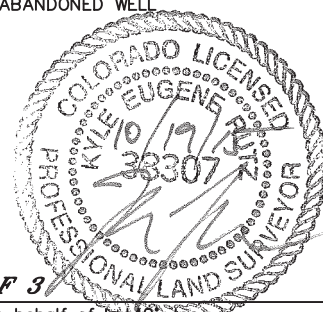
BHL FOOTAGE				BHL LAT °	BHL LONG °	BHL S-T-R
905	FNL	935	FWL	40.43323	-104.46685	5-5-63

## NOTE:

- 1) Bearings shown are Grid Bearings of the Colorado State Plane Coordinate System, North Zone, North American Datum 1983. The lineal dimensions as contained herein are based upon the "U.S. Survey Foot."
- 2) Distances to section lines measured at 90 degrees from said section lines.
- 3) Ground elevations are based on an observed GPS elevation (NAVD 1988 DATUM).
- 4) Latitude and Longitude shown are (NAD 83 DATUM).
- 5) IMPROVEMENTS: See LOCATION DRAWING for all visible improvements within 500' of oil and gas location.
- 6) This map does not represent a boundary survey.

NEAREST EXISTING WELL IN SHL 1/4/1/4	
EX. WELLS RANCH USX BB 3-4	±271' NW
NEAREST CULTURAL ITEMS	
BUILDING	±3301' NW
BUILDING UNIT	±4162' NE
HIGH OCCUPANCY BUILDING UNIT	5280'+
DESIGNATED OUTSIDE ACTIVITY AREA	5280'+
PUBLIC ROAD	5280'+
ABOVE GROUND UTILITY	±3776' NE
RAILROAD	5280'+
PROPERTY LINE	±692' W

- LEGEND
- = ALIQUOT MONUMENT AS DESCRIBED
  - = CALCULATED POSITION
  - = SURFACE HOLE LOCATION (SHL)
  - ▲ = ENTRY POINT LOCATION (EP)
  - BH = BOTTOM HOLE LOCATION (BHL)
  - ⊕ = EXISTING WELL
  - ⊖ = ABANDONED WELL



SHEET 1 OF 3

Kyle E. Rutz-On behalf of Lat40°, Inc.  
Colorado Licensed Professional Land Surveyor No. 38307  
DATE: 10/19/2015  
PROJECT#: 2015126

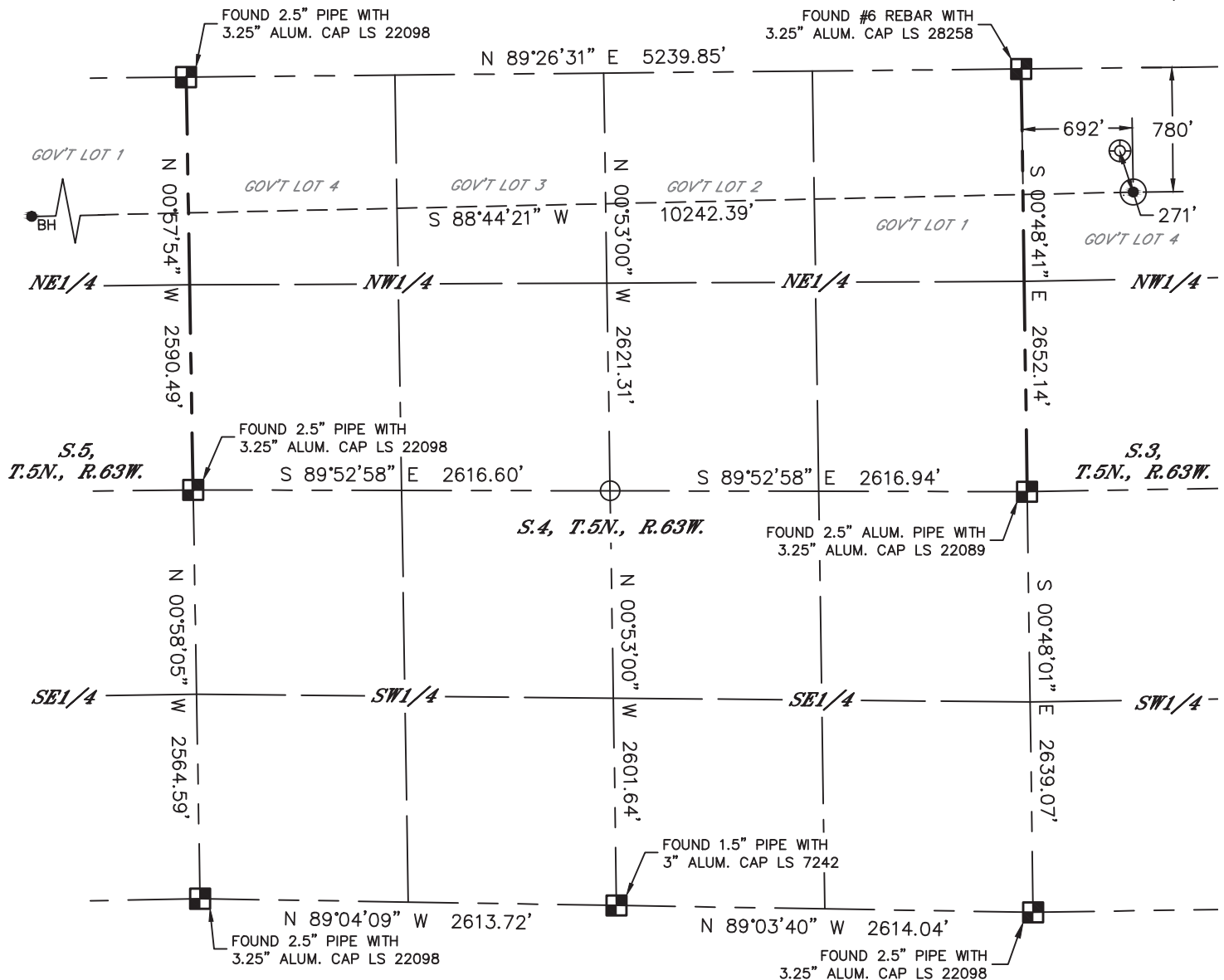


Lat40°, Inc. 6250 W. 10th Street, Unit 2, Greeley, CO 970-515-5294

# WELL LOCATION CERTIFICATE

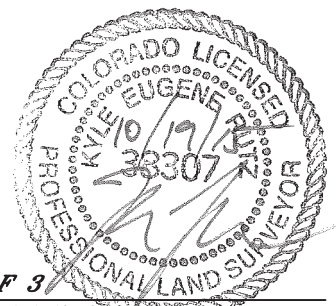
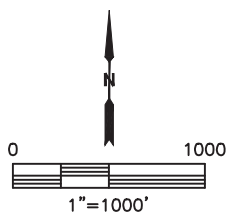
WELLS RANCH STATE BB05-678

SECTION: 3  
TOWNSHIP: 5N  
RANGE: 63W  
6TH. P.M.  
WELD COUNTY, CO



## LEGEND

- = ALIQUOT MONUMENT AS DESCRIBED
- = CALCULATED POSITION
- ⊙ = SURFACE HOLE LOCATION (SHL)
- ▲ = ENTRY POINT LOCATION (EP)
- = BOTTOM HOLE LOCATION (BHL)
- ⊕ = EXISTING WELL
- ⊖ = ABANDONED WELL



**SHEET 2 OF 3**

Kyle E. Rutz—On behalf of Lat40°, Inc.  
Colorado Licensed Professional Land Surveyor No. 38307  
DATE: 10/19/2015  
PROJECT#: 2015126

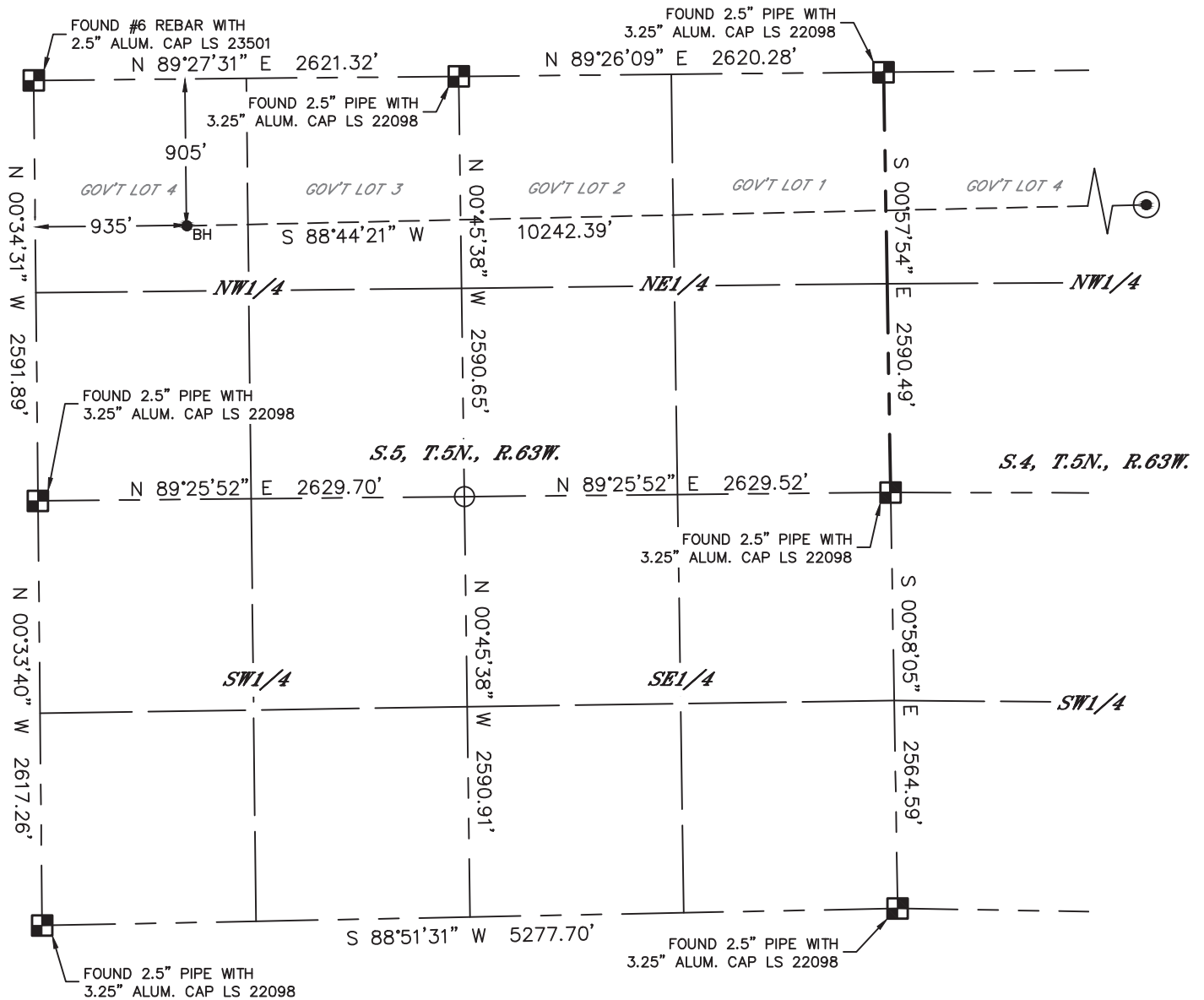


Lat40°, Inc. 6250 W. 10th Street, Unit 2, Greeley, CO 970-515-5294

# WELL LOCATION CERTIFICATE

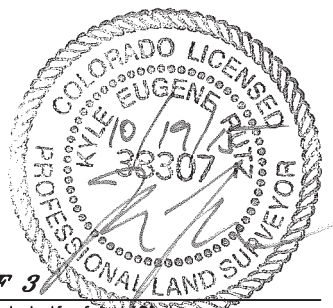
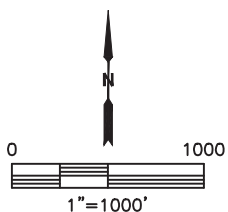
WELLS RANCH STATE BB05-678

SECTION: 3  
TOWNSHIP: 5N  
RANGE: 63W  
6TH. P.M.  
WELD COUNTY, CO



## LEGEND

- = ALIQUOT MONUMENT AS DESCRIBED
- = CALCULATED POSITION
- ⊙ = SURFACE HOLE LOCATION (SHL)
- ▲ = ENTRY POINT LOCATION (EP)
- BH = BOTTOM HOLE LOCATION (BHL)
- ⊕ = EXISTING WELL
- ⊖ = ABANDONED WELL



**SHEET 3 OF 3**

Kyle E. Rutz—On behalf of Lat40°, Inc.  
Colorado Licensed Professional Land Surveyor No. 38307  
DATE: 10/19/2015  
PROJECT#: 2015126