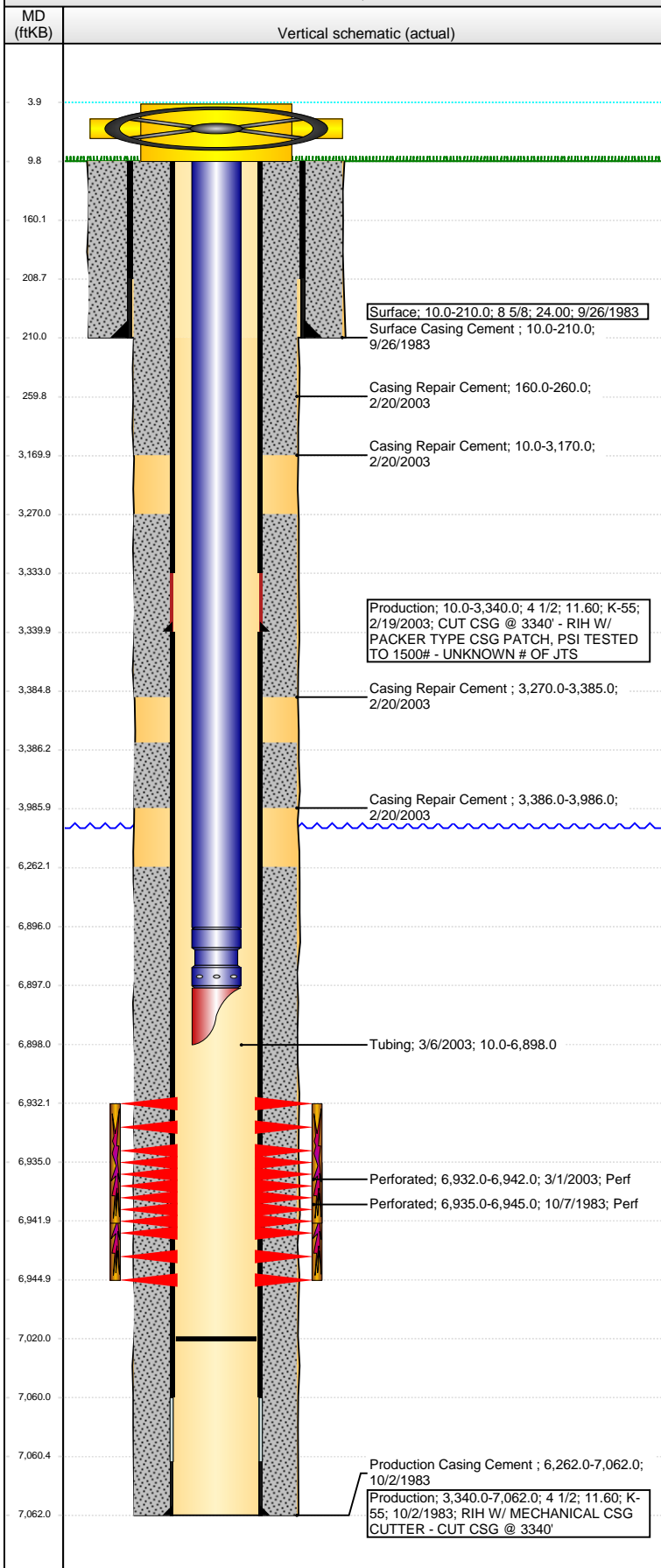


**Well Name: GILL LAND 22-3**

VERTICAL - ORIGINAL HOLE, 8/8/2016 11:36:35 AM



## Well Header

API	Business Unit	District	Well Config
05-123-11359	DJ BASIN	15	VERTICAL
Original KB Elevation (ft)	KB - GL / MSL (ftKB)	Spud Date	P & A Date
4,754	10.00	9/26/1983	

## Comment

WELL DATA FOR NEW DRILL IS SKETCHY AND LIMITED.

CSG RPR @ 3340 - RPR'D WITH PATCH AND CMT

## Directions To Well

## Congressional Location

Quarter 3	Quarter 4	Section	Township	Twnshp N/S Dir	Range	Range E/W Dir
NW	NW	22	6	N	64	W

## Bottom Hole Location

North-South Distance (ft)	From N or S Line	East-West Distance (ft)	From E or W Line

## Plug Back Total Depths

Date	Depth (ftKB)	Method	Com
10/5/1983	7,010.0	CASED HOLE LOG	DEPTH LOGGER FROM CBL
3/6/2003	7,020.0	TAG	CLEAN OUT AND LAND TBG

## Wellbore Sections

Section Des	Size (in)	Act Top, MD (ftKB)	Act Btm, MD (ftKB)
SURFACE	12 1/4	10	210
PRODUCTION	7 7/8	210	7,062

## Zone Statuses

Zone Name	Status Date	Status	Fluid Type	Job	Prod Method
CODELL	10/25/1983	PR		DRILLING/CO...	
CODELL	3/11/2003	PR		RE-FRAC, 11/1...	

## Casing Strings

### Surface, 210.0ftKB

Casing Description	Run Date	OD (in)	Wt/Len (l...)	Grade	Top, MD (ft...)	MD (ftKB)
Surface	9/26/1983	8 5/8	24.00		10.0	210.0

### Production, 3,340.0ftKB

Casing Description	Run Date	OD (in)	Wt/Len (l...)	Grade	Top, MD (ft...)	MD (ftKB)
Production	2/19/2003	4 1/2	11.60	K-55	10.0	3,340.0

### Production, 7,062.0ftKB

Casing Description	Run Date	OD (in)	Wt/Len (l...)	Grade	Top, MD (ft...)	MD (ftKB)
Production	10/2/1983	4 1/2	11.60	K-55	10.0	7,062.0

## Cement

Description	Top Depth (ftKB)	Bottom Depth (ftKB)
Surface Casing Cement	10.0	210.0
Production Casing Cement	6,262.0	7,062.0
Casing Repair Cement	3,270.0	3,385.0
Casing Repair Cement	3,386.0	3,986.0
Casing Repair Cement	10.0	3,170.0
Casing Repair Cement	160.0	260.0

## Tubing Strings

Tubing Description	Run Date	String...	ID (in)	Wt (lb/ft)	Grade	Len (ft)	Set De...
Tubing	3/6/2003	2 3/8				6,888.00	

## Tubing Components

Item Des	OD (in)	Wt (lb/ft)	Grade	Jts	Len (ft)	Btm (ftKB)	Btm (TVD) (ftKB)
Tubing	2 3/8			213	6,886.00	6,896.0	
Pump Seating Nipple	2 3/8	1.10			1.00	6,897.0	
Mule Shoe	2 3/8	4.70			1.00	6,898.0	

## Perforation Data

Zone	Bnch/St g	Entered Shot Total	Top (ftKB)	Btm (ftKB)	Date
CODELL, ORIGINAL HOLE		40	6,932.00	6,942.00	3/1/2003
CODELL, ORIGINAL HOLE		20	6,935.00	6,945.00	10/7/1983

**Well Name: GILL LAND 22-3**

VERTICAL - ORIGINAL HOLE, 8/8/2016 11:36:37 AM

## Stimulations & Treatments

Date 10/8/1983	Zone CODELL, ORIGINAL HOLE	Primary Job Type DRILLING/COMPLETION - ORIGINAL
Technical Result Failure	Tech Result Details Screen-Out	Tech Result Note
Comment		

Date 3/4/2003	Zone CODELL, ORIGINAL HOLE	Primary Job Type RE-FRAC
Technical Result	Tech Result Details	Tech Result Note
Comment		

## Other In Hole

Run Date	Des	OD (in)	Top (ftKB)	Btm (ftKB)

## Logs

Date	Type	Top, MD (ftKB)	Btm, MD (ftKB)
10/1/1983	INDUCTION	210.0	7,061.0
10/1/1983	NEUTRON/DENSITY POROSITY	3,600.0	7,046.0
10/5/1983	CEMENT BOND	6,100.0	7,010.0
5/13/2015	GYRO	10.0	6,800.0

