

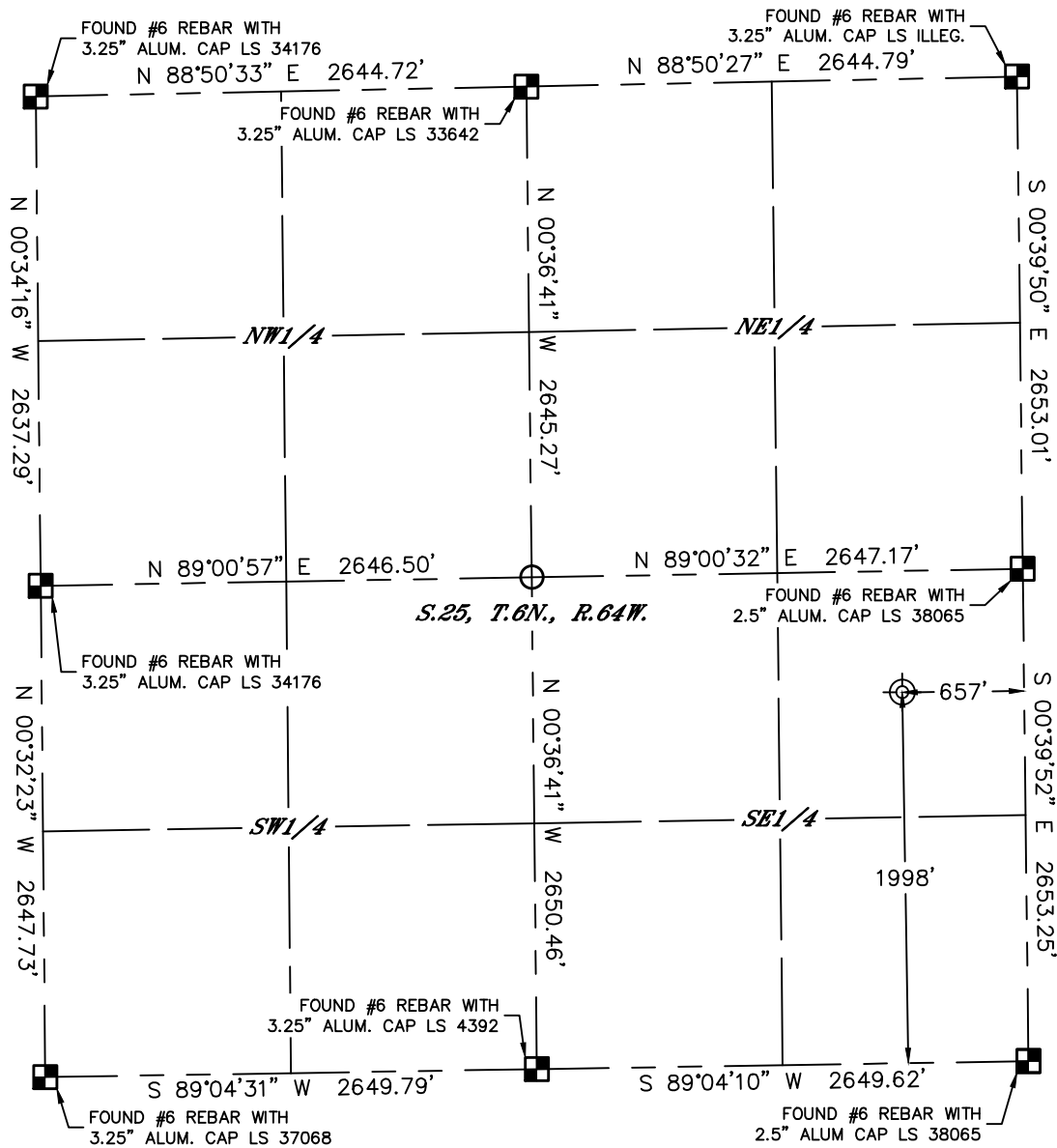


Lat40°, Inc. 6250 W. 10th Street, Unit 2, Greeley, CO 970-515-5294

ABANDONED WELL AS-BUILT APPROXIMATE

FAIRMEADOWS LAND CO 1 (API# 05-123-07163)

SECTION: 25
TOWNSHIP: 6N
RANGE: 64W
6TH. P.M.
WELD COUNTY, CO

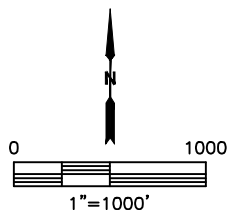


- LEGEND
- = ALIQUOT MONUMENT AS DESCRIBED
 - = CALCULATED POSITION
 - = SURFACE HOLE LOCATION (SHL)
 - ▲ = ENTRY POINT LOCATION (EP)
 - = BOTTOM HOLE LOCATION (BHL)
 - ⊙ = EXISTING WELL
 - ⊙ = ABANDONED WELL

SHL FOOTAGE	SHL LAT°	SHL LONG°	SHL PDOP	SHL ELEV	SHL 1/4/1/4	SHL S-T-R
1998 FSL 657 FEL	40.45568	-104.49113	1.9	4639	NESE	25-6-64

SURFACE DESCRIPTION

FOUND STRONG METAL LOCATOR READING APPROXIMATELY 3.0' IN DIAMETER



NOTE:

- 1) Bearings shown are Grid Bearings of the Colorado State Plane Coordinate System, North Zone, North American Datum 1983. The lineal dimensions as contained herein are based upon the "U.S. Survey Foot."
- 2) Distances to section lines measured at 90 degrees from said section lines.
- 3) Ground elevations are based on an observed GPS elevation (NAVD 1988 DATUM).
- 4) Latitude and Longitude shown are (NAD 83 DATUM).
- 5) This map does not represent a boundary survey.

DATE: 2/8/2016
PROJECT#: 2016008