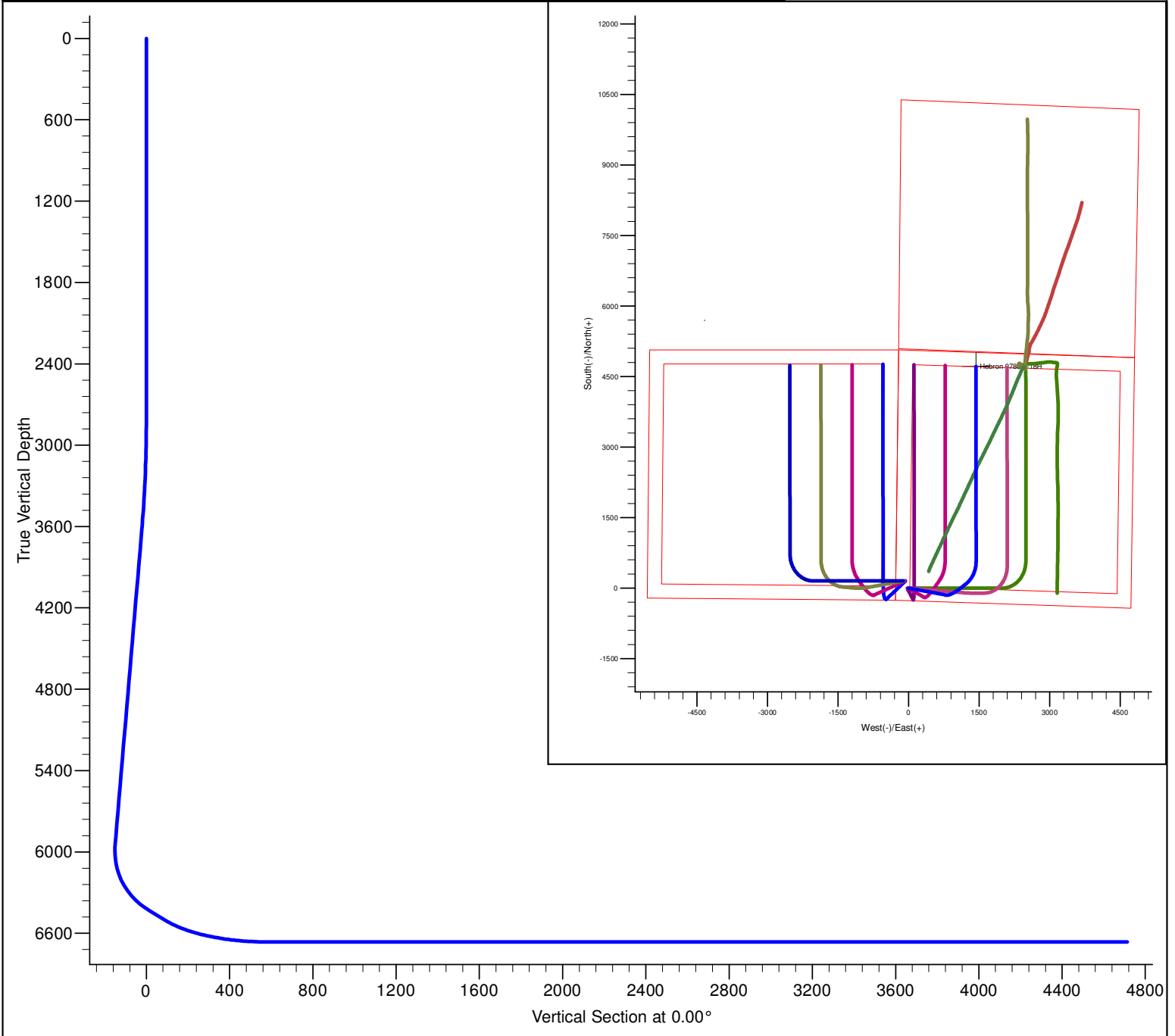


PROJECT DETAILS: North Park Basin										<div><div><div><div></div><div>G</div></div><div><div></div><div>T</div></div><div><div></div><div>M</div></div></div><div><div></div><div></div></div></div> <div><div>Azimuths to Grid North</div><div>True North: 0.60°</div><div>Magnetic North: 10.50°</div><div>Magnetic Field</div><div>Strength: 53179.2snT</div><div>Dip Angle: 66.96°</div><div>Date: 12/31/2009</div><div>Model: IGRF200510</div></div>			
Geodetic System: US State Plane 1983 Datum: North American Datum 1983 Ellipsoid: GRS 1980 Zone: Colorado Northern Zone System Datum: Mean Sea Level													
FORMATION TOP DETAILS												CASING DETAILS	
TVDPPath 6348.0		MDPath 6539.0		Formation Niobrara		DipAngle 0.00		DipDir		No casing data is available			
DESIGN DETAILS: Design #1												Project: North Park Basin Site: T7N-R80W-S18 Well: Hebron 0780 8-18H Wellbore: Wellbore #1 Design: Design #1	
0' Vertical Section coordinates													
Type Target	Target	Azimuth 0.00	Origin Slot	Type	N/S 0.0	E/W 0.0	From	TVD 0.0					



SECTION DETAILS											
Sec	MD	Inc	Azi	TVD	+N/-S	+E/-W	Dleg	TFace	VSect	Target	
1	0.0	0.00	0.00	0.0	0.0	0.0	0.00	0.00	0.0		
2	2800.0	0.00	0.00	2800.0	0.0	0.0	0.00	0.00	0.0		
3	3631.7	16.63	100.62	3620.1	-22.1	117.8	2.00	100.62	-22.1		
4	6056.2	16.63	100.62	5943.1	-150.0	800.0	0.00	0.00	-150.0		
5	6682.3	60.00	51.60	6431.0	12.3	1121.2	8.00	-58.48	12.3		
6	6832.3	60.00	51.60	6506.0	93.0	1223.1	0.00	0.00	93.0		
7	7407.1	90.00	359.97	6663.1	576.3	1436.1	10.00	-68.41	576.3	Hebron 8-18H	
8	11543.5	90.00	359.97	6663.1	4712.8	1433.7	0.00	0.00	4712.8	Hebron 8-18H	