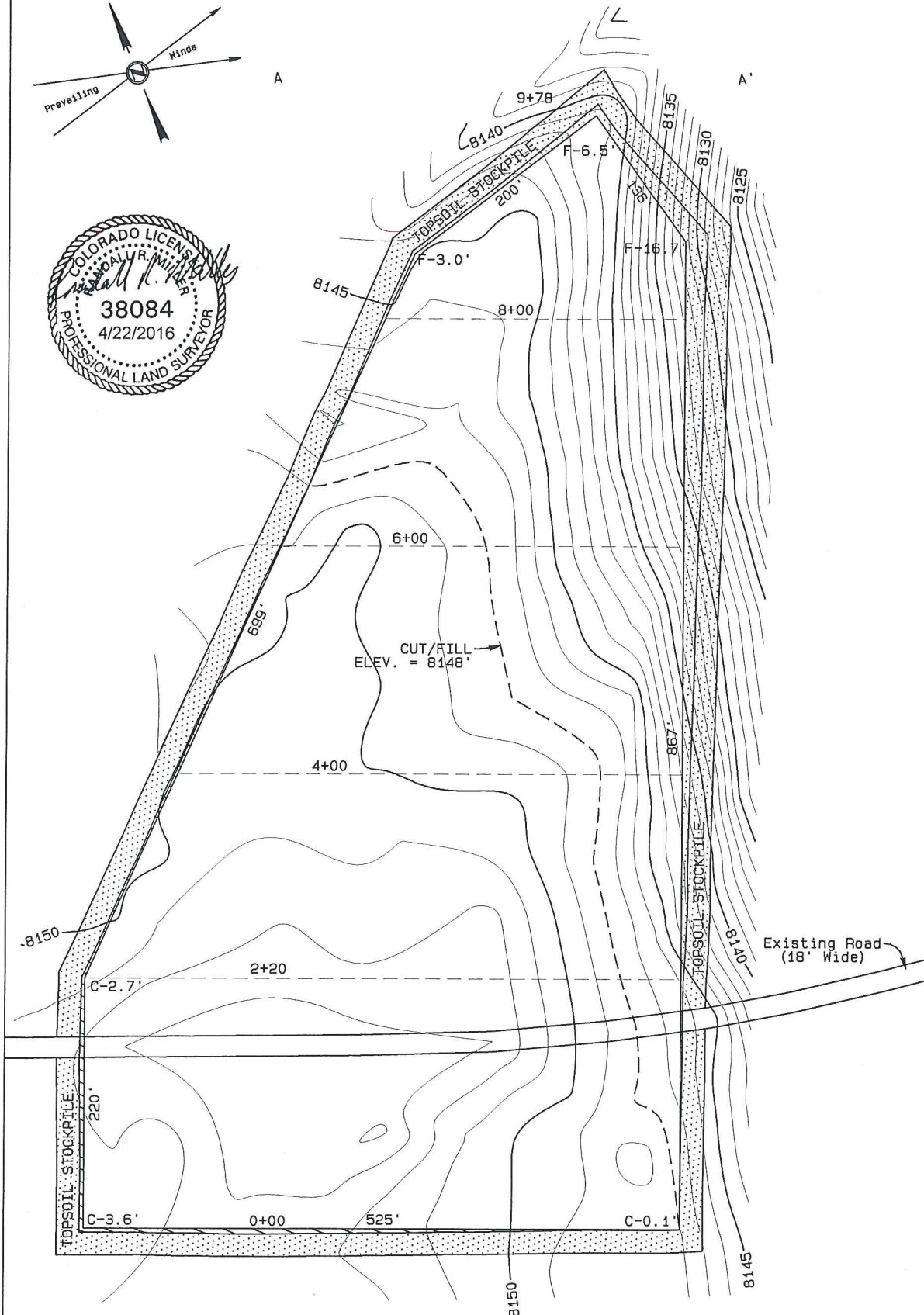
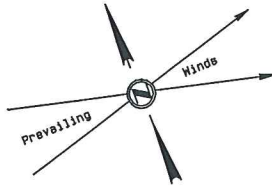


Earthwork:
 Total Excavation - 27236 Cu. Yd.
 Pad Fill/Borrow - 21701 Cu. Yd.
 Topsoil Stockpile - 5535 Cu. Yd.
 Total Pad = 8.57 acres
 Final Pad Elevation = 8148'

SandRidge Exploration & Production, LLC

CONSTRUCTION LAYOUT
 BIGHORN PRODUCTION FACILITY
 NE1/4NW1/4 of SECTION 17
 T7N, R80W, 6th P.M.



BASIS OF ELEVATION

SPOT ELEVATION AT THE NE CORNER OF SECTION 17, T7N, R80W, 6TH PM, TAKEN FROM THE COALMONT QUADRANGLE, USGS 7.5 MIN QUAD (TOPOGRAPHIC MAP) WITH SAID ELEVATION MARKED AS BEING 8122 FEET.

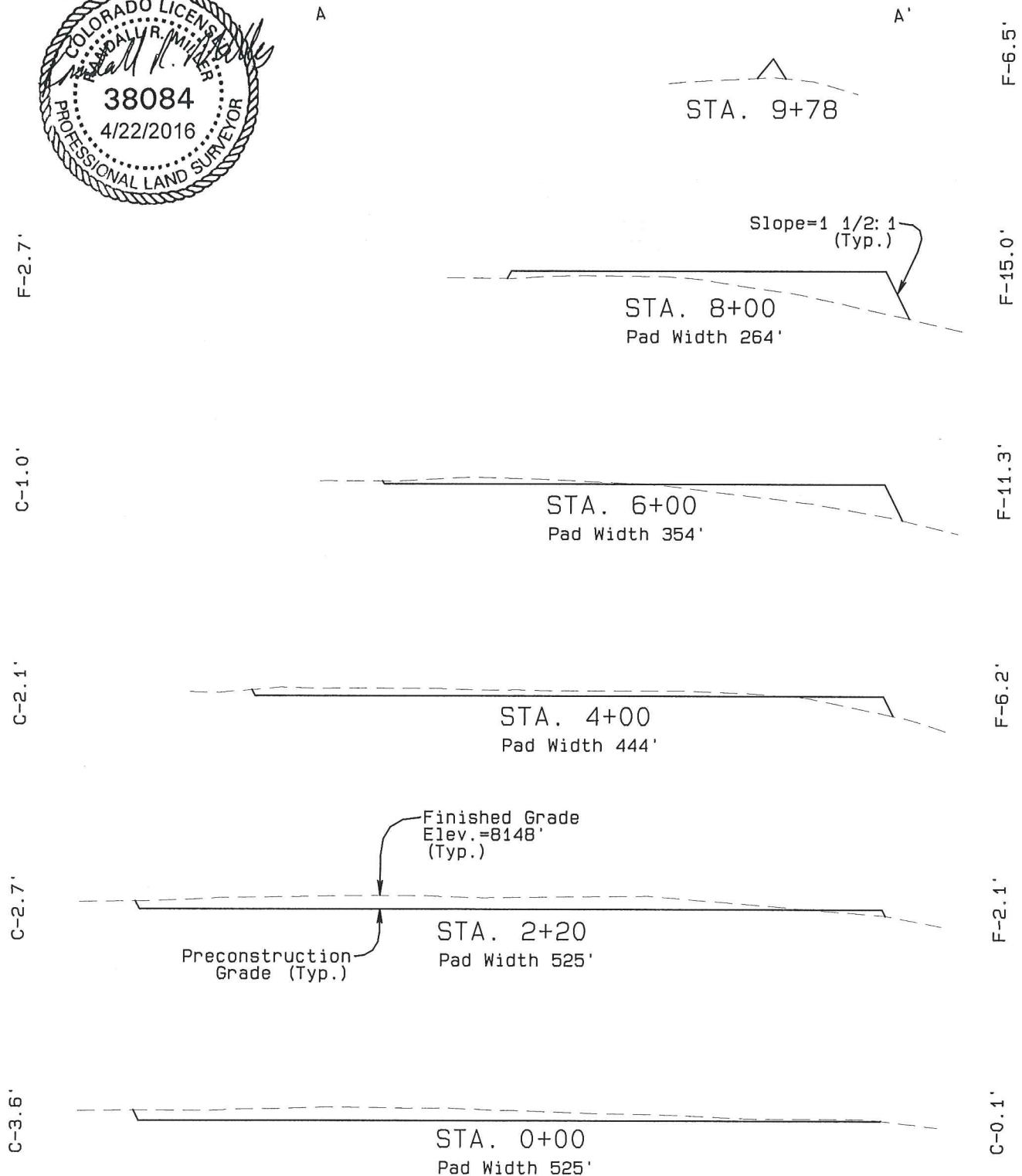
GRAPHIC SCALE 1"=100'



NORTH PARK ENGINEERING & CONSULTING, INC.
 PO Box 395 Walden, CO 80480 970-723-3725

SandRidge Exploration & Production, LLC

CONSTRUCTION LAYOUT CROSS SECTION
BIGHORN PRODUCTION FACILITY
NE1/4NW1/4 of SECTION 17,
T7N, R80W, 6th P.M.



BASIS OF ELEVATION

SPOT ELEVATION AT THE NE CORNER OF
SECTION 17, T7N, R80W, 6TH PM, TAKEN
FROM THE COALMONT QUADRANGLE, USGS
7.5 MIN QUAD (TOPOGRAPHIC MAP) WITH SAID
ELEVATION MARKED AS BEING 8122 FEET.

VERTICAL EXAGGERATION = 2X
GRAPHIC SCALE 1"=100'



NORTH PARK ENGINEERING & CONSULTING, INC.
PO Box 395 Walden, CO 80480 970-723-3725