



# Kerr-McGee Oil & Gas Onshore LP

A subsidiary of Anadarko Petroleum Corporation

1099 18<sup>th</sup> Street  
Denver, CO 80202  
720-929-6000

August 4, 2016

Matt Lepore  
Director, Colorado Oil and Gas Conservation Commission  
Department of Natural Resources  
The Chancery Building  
1120 Lincoln Street, Suite 801  
Denver, CO 80203

Re: **30 Day Certification Letter - 318A.e**  
HIGHLANDS 15N-16HZ (Doc No. 401072904)  
Township 1 North, Range 66 West  
Section 9: NW/4NE/4  
Unit Acreage: 560 acres  
Unit Spacing: 1N-66W-SEC 9: E/2  
1N-66W-SEC 16: N/2SE/4; NE/4  
Weld County, Colorado

Dear Director Lepore:

Kerr McGee Oil and Gas Onshore LP ("KMG") hereby certifies that KMG owns one hundred percent (100%) of the leasehold interest in the mineral rights in the proposed spacing unit. KMG hereby respectfully requests approval of this boundary well.

If you have any questions or issues regarding this permit, please contact our office.

Sincerely,

**Kerr-McGee Oil and Gas Onshore LP**

A handwritten signature in blue ink that reads 'Cheryl Light'.

Cheryl Light  
Senior Regulatory Analyst

Enclosure

**T1N, R66W**

NW. COR.  
SEC. 9, T1N, R66W  
FOUND 2 1/2" ALUM. CAP  
ILLEGIBLE

S 89°14'02" W 2651.03' (M)

N. 1/4 COR.  
SEC. 9, T1N, R66W  
FOUND 3 1/4" ALUM. CAP  
L.S. NO. 13155

S 89°00'20" W  
1325.34' (M)

E. 1/16 COR.  
SEC. 4 & SEC. 9  
T1N, R66W  
FOUND 2" ALUM. CAP  
L.S. NO. 25937

S 88°59'19" W  
1325.59' (M)

NE. COR.  
SEC. 9, T1N, R66W  
FOUND 2" ALUM. CAP  
ILLEGIBLE

**SURFACE LOCATION: NAD 83**  
GROUND ELEVATION= 4994.3'  
LATITUDE= 40.072127°  
LONGITUDE= -104.778003°  
LATITUDE= 40°04'19.657"  
LONGITUDE= -104°46'40.811"  
**HEEL LOCATION: NAD 83**  
LATITUDE= 40.069438°  
LONGITUDE= -104.778780°  
LATITUDE= 40°04'09.978"  
LONGITUDE= -104°46'43.610"  
**BOTTOM HOLE LOCATION: NAD 83**  
LATITUDE= 40.051388°  
LONGITUDE= -104.778816°  
LATITUDE= 40°03'04.997"  
LONGITUDE= -104°46'43.738"

**HIGHLANDS**

15N-16HZ  
SURFACE LOCATION

N 00°36'52" W  
2656.84' (M)

1297'  
1687'  
HEEL LOCATION

N 00°28'15" W  
1342.84' (M)

N. 1/16 COR.  
SEC. 9 & SEC. 10  
T1N, R66W  
SET 2 1/2" ALUM. CAP  
P.L.S. NO. 38512

W. 1/4 COR.  
SEC. 9, T1N, R66W  
FOUND 2" ALUM. CAP  
L.S. NO. 25937

S 89°35'15" W  
2641.94' (M)

CENTER 1/4 COR.  
SEC. 9, T1N, R66W  
FOUND 3 1/4" ALUM. CAP  
L.S. NO. 38046

S 89°35'39" W  
2644.15' (M)

E. 1/4 COR.  
SEC. 9, T1N, R66W  
FOUND 3 1/4" ALUM. CAP  
L.S. NO. 34995

N 00°47'43" W  
1320.25' (M)

S. 1/16 COR.  
SEC. 9 & SEC. 8  
T1N, R66W  
FOUND 2" ALUM. CAP  
L.S. NO. 25937

S 89°03'21" W  
1318.84' (M)  
SW. 1/16 COR.  
SEC. 9, T1N, R66W  
FOUND 3 1/4" ALUM. CAP  
W.C. 25' NORTH  
L.S. NO. 30086

CS. 1/16 COR.  
SEC. 9, T1N, R66W  
FOUND 2 1/2" ALUM. CAP  
L.S. NO. 38046

S 00°22'45" E 6575' GRID  
S 00°05'17" W TRUE  
S 08°18'45" E MAGNETIC

N 00°28'13" W  
1341.61' (M)

S. 1/16 COR.  
SEC. 9 & SEC. 10  
T1N, R66W  
FOUND 2 1/2" ALUM. CAP  
L.S. NO. 38046

N 00°47'58" W  
1320.78' (M)

SW. COR.  
SEC. 9, T1N, R66W  
FOUND 3 1/4" ALUM. CAP  
ILLEGIBLE

S 89°01'56" W 2633.46' (M)

S. 1/4 COR.  
SEC. 9, T1N, R66W  
FOUND 3 1/4" ALUM. CAP  
L.S. NO. 30086

S 88°58'05" W 2638.21' (M)

WELL BORE CONTINUES  
INTO SECTION 16

N 00°28'54" W  
1293.26' (M)

SE. COR.  
SEC. 9, T1N, R66W  
FOUND 3 1/4" ALUM. CAP  
L.S. NO. 30086

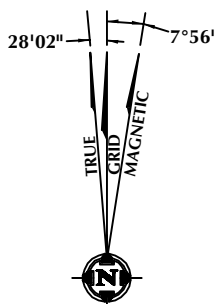
MATCH LINE  
SEE SHEET 2

**CERTIFICATE OF SURVEYOR:**

THIS IS TO CERTIFY THAT THE ABOVE PLAT WAS PREPARED FROM FIELD NOTES OF ACTUAL SURVEY MADE BY ME OR UNDER MY SUPERVISION AND THAT THE SAME ARE TRUE AND CORRECT TO THE BEST OF MY KNOWLEDGE AND BELIEF. THIS CERTIFICATE DOES NOT REPRESENT A LAND SURVEY PLAT OR IMPROVEMENT SURVEY PLAT AS DEFINED BY C.R.S. 38-51-302 AND CANNOT BE RELIED UPON TO DETERMINE OWNERSHIP.

*Randall K. French*  
RANDALL K. FRENCH  
PROFESSIONAL LAND SURVEYOR  
COLORADO REGISTRATION NUMBER 38512

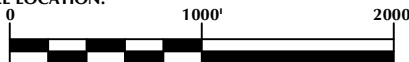
NOTICE:  
ACCORDING TO COLORADO STATE LAW YOU MUST COMMENCE ANY LEGAL ACTION BASED UPON ANY DEFECT IN THIS SURVEY WITHIN THREE YEARS AFTER YOU FIRST DISCOVER SUCH DEFECT. IN NO EVENT MAY ANY ACTION BASED UPON ANY DEFECT IN THIS SURVEY BE COMMENCED MORE THAN TEN YEARS FROM THE DATE ON THE CERTIFICATION SHOWN HEREON.



NOTE:  
MAGNETIC NORTH IS CURRENT AS OF 6/12/2015.  
MAGNETIC NORTH CHANGES WEST 0°06' PER YEAR.

**NOTES:**

- ▲ INDICATES SECTION CORNER
- INDICATES CALCULATED CORNER
- ELEVATION BASED ON NAVD88 (GEOID09)
- BASIS OF BEARING DERIVED FROM COLORADO COORDINATE SYSTEM OF 1983 NORTH ZONE.
- ALL MEASURED DISTANCES ARE GRID.  
COMBINED SCALE FACTOR: .99972674 CALCULATED FROM THE N. 1/4 CORNER OF SECTION 9, T1N, R66W
- OPERATOR: ROB WILSON / PDOP = 1.5
- SEE ADDENDUM TO WELL LOCATION CERTIFICATE FOR EXISTING IMPROVEMENTS WITHIN 500' OF THE WELL PAD.
- WELL FOOTAGES ARE MEASURED AT RIGHT ANGLES TO THE SECTION LINES.
- THE BOTTOM OF HOLE BEARS S00°22'45"E, 6575' FROM THE HEEL LOCATION.

**WELL PAD - HIGHLANDS 27C-33HZ**

HIGHLANDS 15N-16HZ  
WELL LOCATION CERTIFICATE  
320' FNL & 1469' FEL NWNE (SURFACE)  
1297' FNL & 1687' FEL NWNE (HEEL)  
LOCATED IN SECTION 9  
2600' FNL & 1698' FEL SWNE (BOTTOM)  
LOCATED IN SECTION 16  
T1N, R66W, 6TH P.M.  
WELD COUNTY, COLORADO

**Kerr-McGee Oil &  
Gas Onshore L.P.**  
1099 18th Street  
Denver, Colorado 80202

**CONSULTING, LLC**

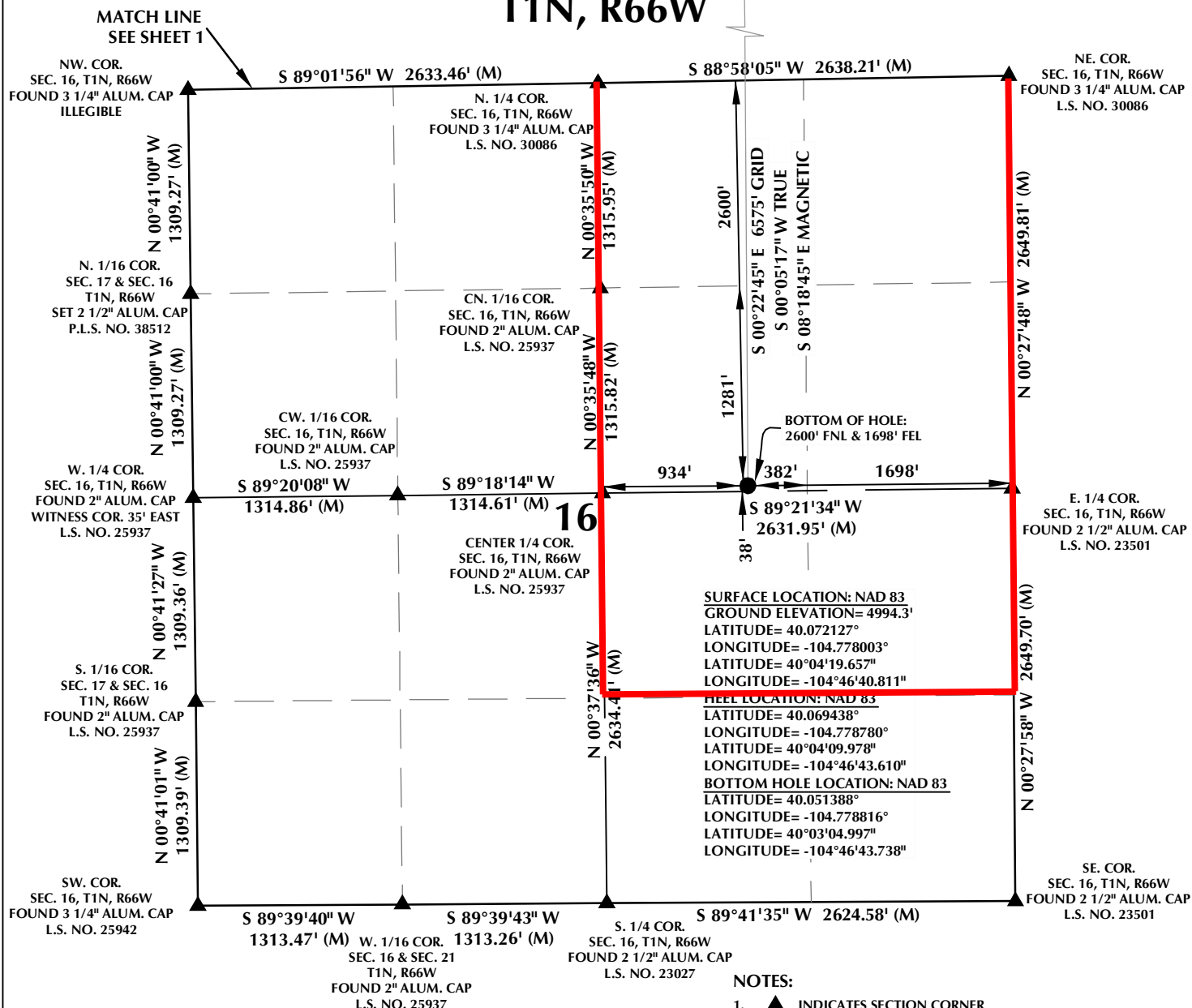
SHERIDAN OFFICE  
1095 Saberton Avenue  
Sheridan, Wyoming 82801  
Phone 307-674-0609

LOVELAND OFFICE  
1635 Foxtrail Drive, Suite 204  
Loveland, Colorado 80538  
Phone 970-776-4331

DRAFTED BY:	LMO	CHECKED BY:	RKF	SHEET NO:
DATE DRAFTED:	6/19/15	DATE SURVEYED:	3/13/15	1
REVISED:	6/23/16	FILE NAME:	14-116	1 OF 2

# PROPOSED SPACING UNIT

## T1N, R66W

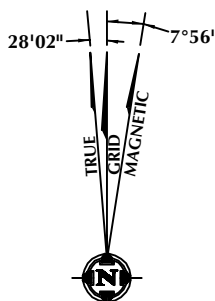


### CERTIFICATE OF SURVEYOR:

THIS IS TO CERTIFY THAT THE ABOVE PLAT WAS PREPARED FROM FIELD NOTES OF ACTUAL SURVEY MADE BY ME OR UNDER MY SUPERVISION AND THAT THE SAME ARE TRUE AND CORRECT TO THE BEST OF MY KNOWLEDGE AND BELIEF. THIS CERTIFICATE DOES NOT REPRESENT A LAND SURVEY PLAT OR IMPROVEMENT SURVEY PLAT AS DEFINED BY C.R.S. 38-51-302 AND CANNOT BE RELIED UPON TO DETERMINE OWNERSHIP.

*Randall K. French*  
 RANDALL K. FRENCH  
 PROFESSIONAL LAND SURVEYOR  
 COLORADO REGISTRATION NUMBER 38512

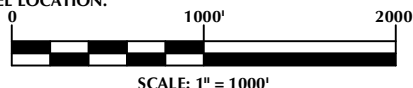
NOTICE:  
 ACCORDING TO COLORADO STATE LAW YOU MUST COMMENCE ANY LEGAL ACTION BASED UPON ANY DEFECT IN THIS SURVEY WITHIN THREE YEARS AFTER YOU FIRST DISCOVER SUCH DEFECT. IN NO EVENT MAY ANY ACTION BASED UPON ANY DEFECT IN THIS SURVEY BE COMMENCED MORE THAN TEN YEARS FROM THE DATE ON THE CERTIFICATION SHOWN HEREON.



NOTE:  
 MAGNETIC NORTH IS CURRENT AS OF 6/12/2015.  
 MAGNETIC NORTH CHANGES WEST 0°06' PER YEAR.

### NOTES:

- ▲ INDICATES SECTION CORNER
- INDICATES CALCULATED CORNER
- ELEVATION BASED ON NAVD88 (GEOID09)
- BASIS OF BEARING DERIVED FROM COLORADO COORDINATE SYSTEM OF 1983 NORTH ZONE.
- ALL MEASURED DISTANCES ARE GRID.  
 COMBINED SCALE FACTOR: .99972674 CALCULATED FROM THE N. 1/4 CORNER OF SECTION 9, T1N, R66W  
 OPERATOR: ROB WILSON / PDOP = 1.5
- SEE ADDENDUM TO WELL LOCATION CERTIFICATE FOR EXISTING IMPROVEMENTS WITHIN 500' OF THE WELL PAD.
- WELL FOOTAGES ARE MEASURED AT RIGHT ANGLES TO THE SECTION LINES.
- THE BOTTOM OF HOLE BEARS S00°22'45"E, 6575' FROM THE HEEL LOCATION.



### WELL PAD - HIGHLANDS 27C-33HZ

HIGHLANDS 15N-16HZ  
 WELL LOCATION CERTIFICATE  
 320' FNL & 1469' FEL NWNE (SURFACE)  
 1297' FNL & 1687' FEL NWNE (HEEL)  
 LOCATED IN SECTION 9  
 2600' FNL & 1698' FEL SWNE (BOTTOM)  
 LOCATED IN SECTION 16  
 T1N, R66W, 6TH P.M.  
 WELD COUNTY, COLORADO

**Kerr-McGee Oil &  
 Gas Onshore L.P.**  
 1099 18th Street  
 Denver, Colorado 80202



### CONSULTING, LLC

SHERIDAN OFFICE  
 1095 Saberton Avenue  
 Sheridan, Wyoming 82801  
 Phone 307-674-0609

LOVELAND OFFICE  
 1635 Foxtrail Drive, Suite 204  
 Loveland, Colorado 80538  
 Phone 970-776-4331

DRAFTED BY:	LMO	CHECKED BY:	RKF	SHEET NO:
DATE DRAFTED:	6/19/15	DATE SURVEYED:	3/13/15	2
REVISED:	6/23/16	FILE NAME:	14-116	2 OF 2