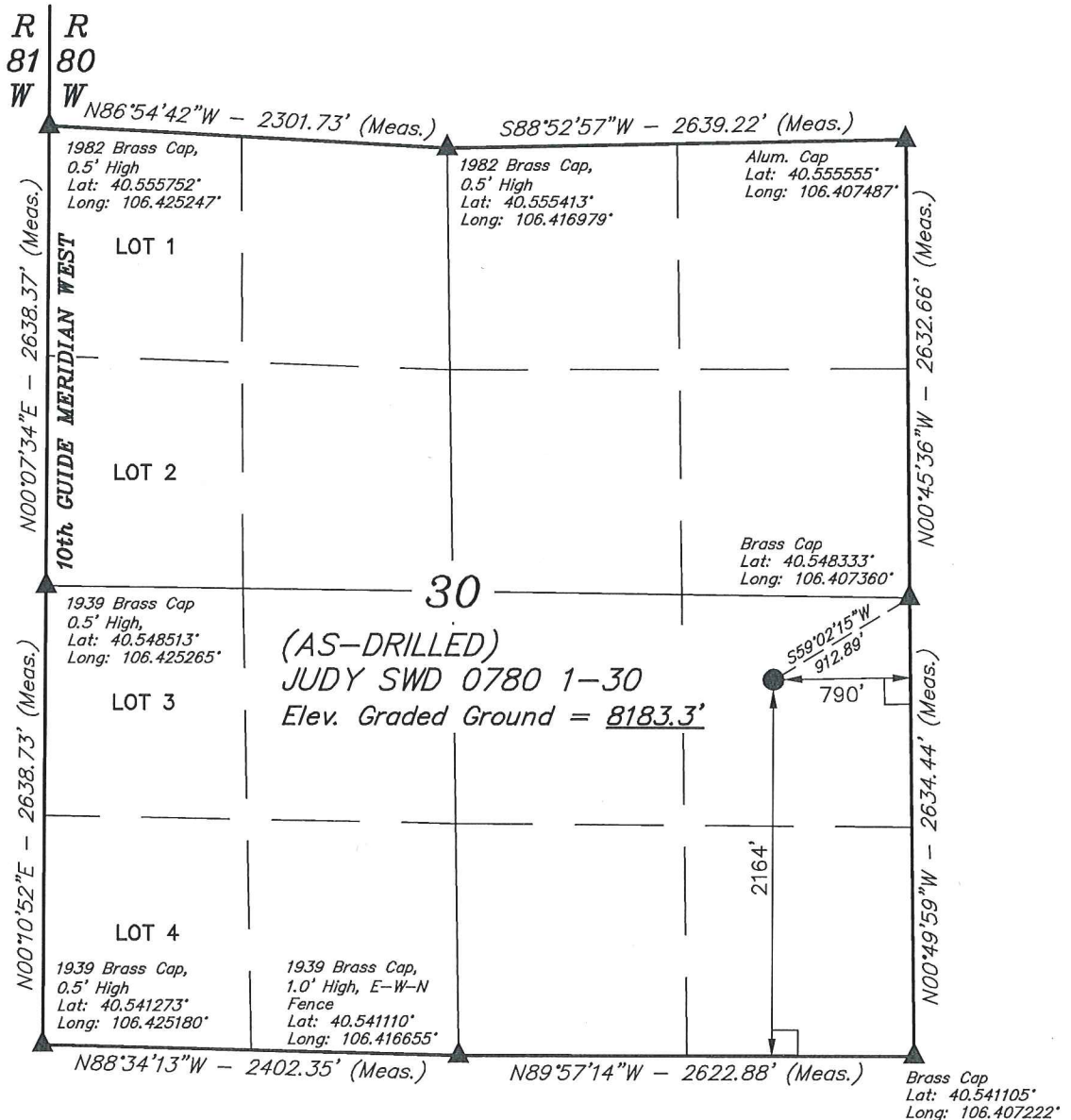


LEGEND:

- = 90° SYMBOL
- = AS-DRILLED WELLHEAD.
- ▲ = SECTION CORNERS LOCATED. (NAD 83)

T7N, R80W, 6th P.M.



CERTIFICATION

THIS IS TO CERTIFY THAT THE ABOVE PLAT WAS PREPARED FROM FIELD NOTES OF ACTUAL SURVEYS MADE BY ME OR UNDER MY SUPERVISION, AND THAT THE SAME ARE TRUE AND CORRECT TO THE BEST OF MY KNOWLEDGE AND BELIEF.

REGISTERED LAND SURVEYOR
REGISTRATION NO. 28285
STATE OF COLORADO
06-23-16

REV: 1 06-23-16 C.D.L. (NAME CHANGE)

NAD 83 (AS-DRILLED SURFACE LOCATION)
LATITUDE = 40°32'49.36" (40.547044)
LONGITUDE = 106°24'36.63" (106.410175)
NAD 27 (AS-DRILLED SURFACE LOCATION)
LATITUDE = 40°32'49.43" (40.547064)
LONGITUDE = 106°24'34.52" (106.409589)
STATE PLANE NAD 83 (CO. NORTH)
N: 1443427.00 E: 2747060.88
STATE PLANE NAD 27 (CO. NORTH)
N: 443424.83 E: 1747217.27

PDOP = 1.6

BASIS OF BEARINGS

BASIS OF BEARINGS IS A G.P.S. OBSERVATION

BASIS OF ELEVATION

SPOT ELEVATION LOCATED AT THE SOUTHEAST CORNER OF SECTION 29, T7N, R80W, 6th P.M. TAKEN FROM THE COALMONT QUADRANGLE, COLORADO, JACKSON COUNTY, 7.5 MINUTE QUAD. (TOPOGRAPHIC MAP) PUBLISHED BY THE UNITED STATES DEPARTMENT OF THE INTERIOR, GEOLOGICAL SURVEY. SAID ELEVATION IS MARKED AS BEING 8156 FEET.



UELS, LLC
Corporate Office * 85 South 200 East
Vernal, UT 84078 * (435) 789-1017



SandRidge Exploration & Production, LLC

(AS-DRILLED) JUDY SWD 0780 1-30
NE 1/4 SE 1/4, SECTION 30, T7N, R80W, 6th P.M.
JACKSON COUNTY, COLORADO

SURVEYED BY	DARREN SHANKS, G.W.	06-10-16	SCALE
DRAWN BY	S.S.	06-20-16	1" = 1000'

AS-DRILLED WELL LOCATION PLAT