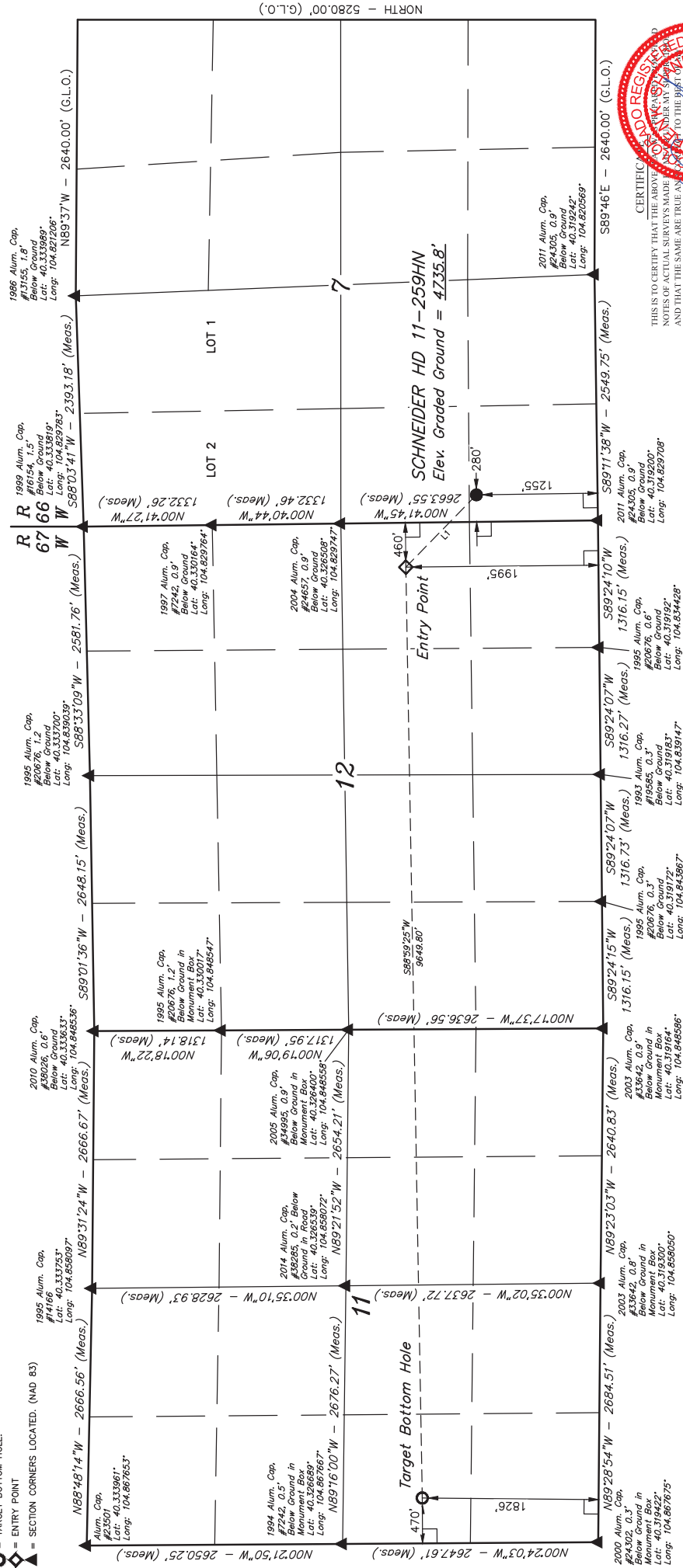


T4N, R66W, 6th P.M.

LEGEND:

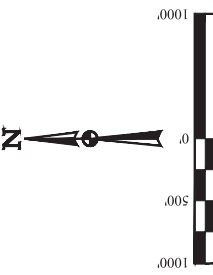
- 90° SYMBOL
- PROPOSED WELLHEAD.
- TARGET BOTTOM HOLE.
- ENTRY POINT
- SECTION CORNERS LOCATED. (NAD 83)



CERTIFICATE OF REGISTRATION
THIS IS TO CERTIFY THAT THE ABOVE
NOTES OF ACTUAL SURVEYS MADE
AND THAT THE SAME ARE TRUE AND
KNOWLEDGE AND BELIEF.

REV: 5 07-26-16 L.C.S. (BHL CHANGE)

LINE TABLE		
LINE	DIRECTION	LENGTH
L1	N45°41'39"W	1046.49'



BASIS OF BEARINGS
BASIS OF BEARINGS IS A GPS OBSERVATION
BASIS OF ELEVATION

USGS COOPERATIVE BASE NETWORK SHEET STATION,
DESIGNATION "VERMILYEA", NGS DATA SHEET LISTS THE
NAVD 88 ELEVATION AS BEING 5026 FEET.

UPLS, LLC
Corporate Office: * 85 South 200 East
Vernal, UT 84078 * (435) 789-1017

NAD 83 (SURFACE LOCATION)	
LATITUDE = 40°19'21.33" (40.322647)	LONGITUDE = 104°49'43.40" (104.828722)
NAD 27 (SURFACE LOCATION)	
LATITUDE = 40°19'21.60" (40.322667)	LONGITUDE = 104°49'41.51" (104.828197)
NAD 83 (ENTRY POINT)	
LATITUDE = 40°19'28.81" (40.324609)	LONGITUDE = 104°49'52.99" (104.831386)
NAD 27 (ENTRY POINT)	
LATITUDE = 40°19'28.88" (40.324609)	LONGITUDE = 104°49'51.10" (104.830861)
NAD 83 (TARGET BOTTOM HOLE)	
LATITUDE = 40°19'27.89" (40.324114)	LONGITUDE = 104°49'57.54" (104.865983)
NAD 27 (TARGET BOTTOM HOLE)	
LATITUDE = 40°19'27.95" (40.324131)	LONGITUDE = 104°49'55.64" (104.865456)

PDOP = 1.2

GREAT WESTERN OPERATING COMPANY
SCHNEIDER HD 11-259HN
SW 1/4 SW 1/4, SECTION 7, T4N, R66W, 6th P.M.
SURVEYED BY GREG WEIMER, J.S.
DRAWN BY K.B.

SCALE	
05-27-16	1" = 1000'

WELL LOCATION PLAT