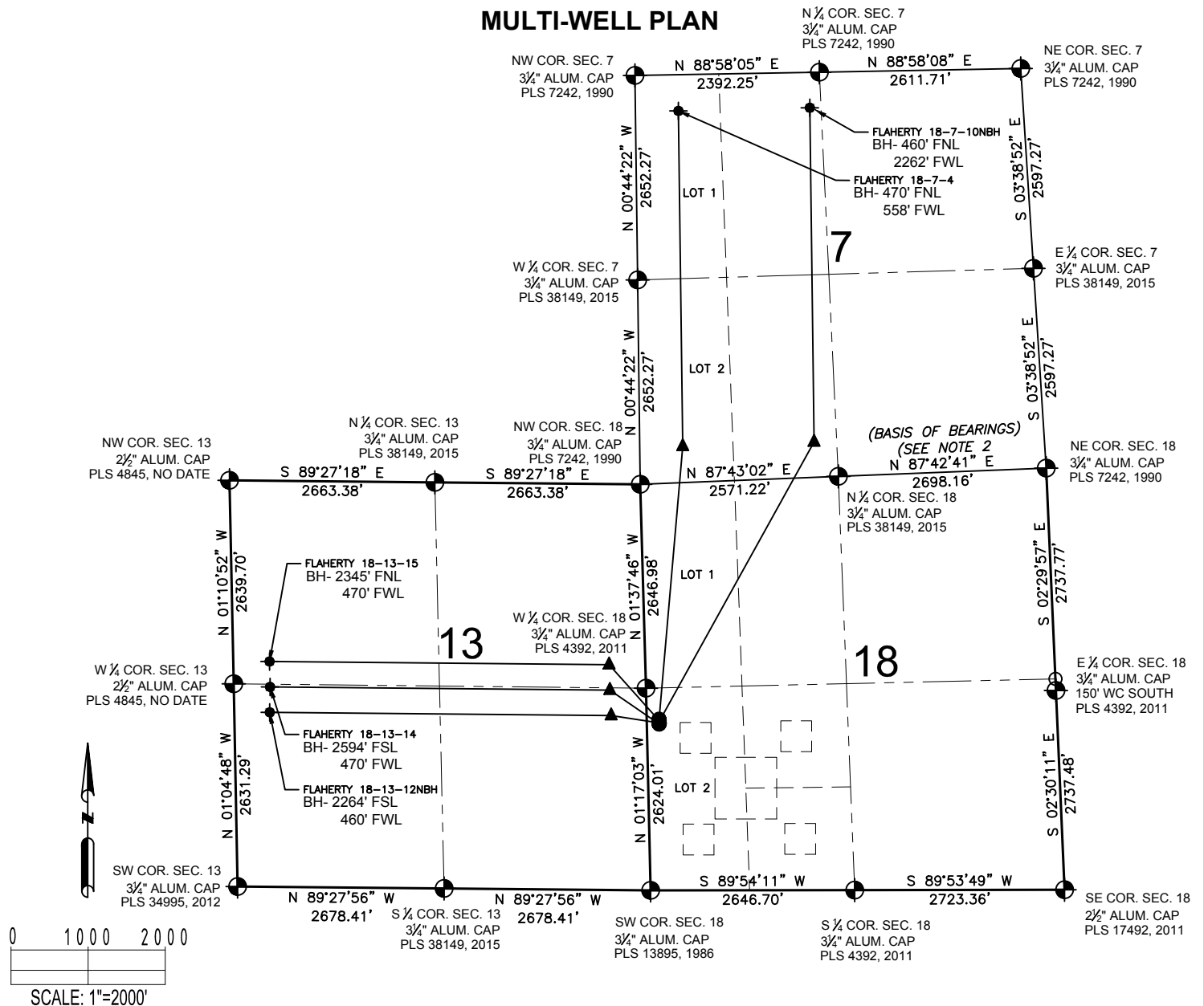


# FLAHERTY 18-I PAD MULTI-WELL PLAN



## LEGEND

- = EXISTING MONUMENT
- = CALCULATED POSITION
- = PROPOSED WELL
- ▲ = LANDING POINT
- ◆ = EXISTING WELL
- LP = LANDING POINT
- BH = BOTTOM HOLE

## NOTES:

- THIS FIELD SURVEY CONFORMS TO THE MINIMUM STANDARDS SET BY THE C.O.G.C.C., RULE NO. 215
- BEARINGS ARE BASED UPON THE ASSUMPTION THAT THE NORTH LINE OF THE NORTHEAST QUARTER OF SECTION 18, BEARS N87°42'41"E BETWEEN THE MONUMENTS SHOWN HEREON.
- GRID DISTANCES ARE SHOWN, AS GPS MEASURED IN THE FIELD, WITH TIES TO WELLS MEASURED PERPENDICULAR TO SECTION LINES. TO GET GROUND DISTANCES MULTIPLY THE SHOWN DISTANCE BY 1.000259204.
- FIELD VERIFICATION OF MONUMENTS COMPLETED WITHIN 1 YEAR OF SIGNATURE DATE.

## NOTES:

- FLAHERTY 18-7-4 TO BE AT 2219' FSL & 160' FWL.
- BOTTOM HOLE AT 470' FNL & 558' FWL, SEC 7.
- FLAHERTY 18-13-15 TO BE AT 2204' FSL & 160' FWL.
- BOTTOM HOLE AT 2345' FNL & 470' FWL, SEC 13, T4N, R63W.
- FLAHERTY 18-7-10NBH TO BE AT 2189' FSL & 160' FWL.
- BOTTOM HOLE AT 460' FNL & 2262' FWL, SEC 7.
- FLAHERTY 18-13-12NBH TO BE AT 2174' FSL & 160' FWL.
- BOTTOM HOLE AT 2264' FSL & 460' FWL, SEC 13, T4N, R63W.
- FLAHERTY 18-13-14 TO BE AT 2159' FSL & 160' FWL.
- BOTTOM HOLE AT 2594' FSL & 470' FWL, SEC 13, T4N, R63W.

PREPARED BY:



FIELD DATE:

09-16-15

DRAWING DATE:

08-01-16

BY:

TJN

CHECKED BY:

CSG

SITE NAME:

FLAHERTY 18-I PAD

SURFACE LOCATION:

LOT 2 SEC. 18, T4N, R62W, 6TH P.M.  
WELD COUNTY, COLORADO

PREPARED FOR:

EDGE  
ENERGY