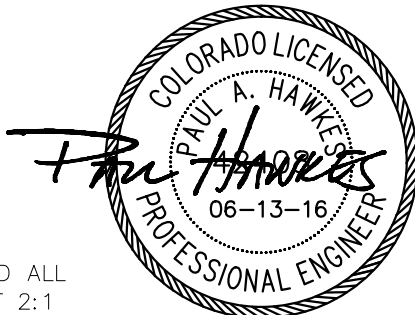
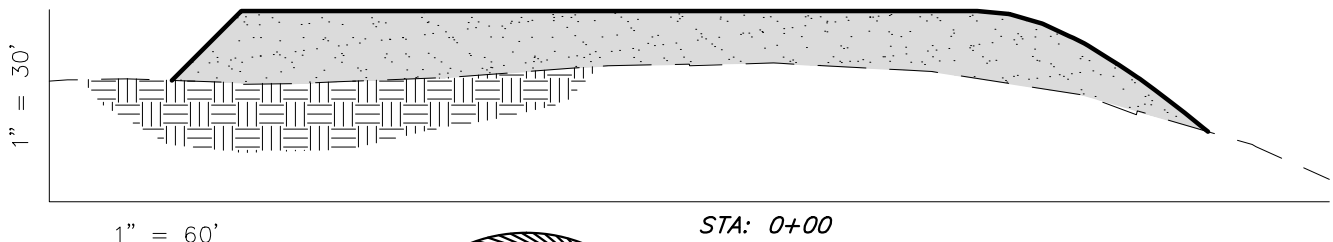
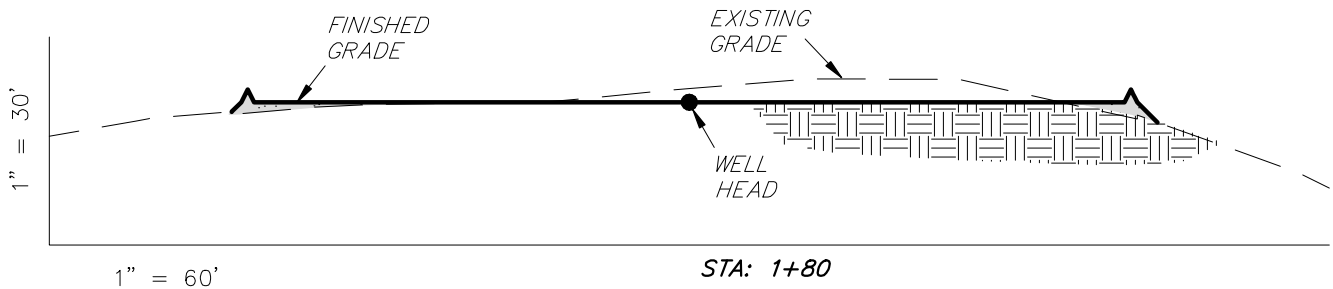
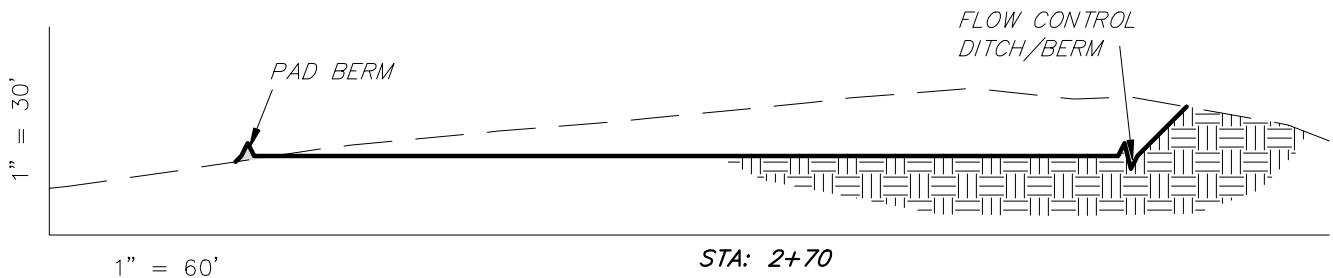
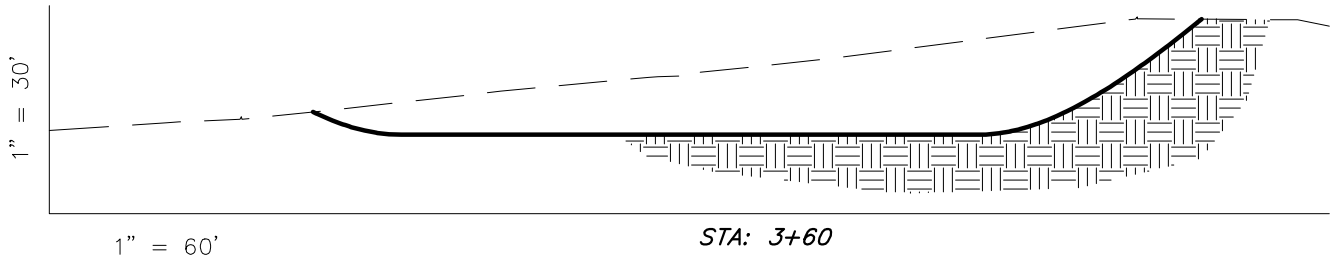


# GRMR Oil & Gas, LLC

## CROSS SECTIONS

### PETER MCCUE 30-3

Pad Location: Lot 7 (NENW) Section 30, T5N, R90W, 6th P.M.



NOTE:  
UNLESS OTHERWISE NOTED ALL  
CUT/FILL SLOPES ARE AT 2:1

#### ESTIMATED EARTHWORK QUANTITIES (No Shrink or swell adjustments have been used) (Expressed in Cubic Yards)

ITEM	CUT	FILL	6" TOPSOIL	EXCESS
PAD	11,960	11,960	Topsoil is not included in Pad Cut Volume	0
PIT	N/A	N/A		N/A
TOTALS	11,960	11,960	2,280	0

SURVEYED BY: K.G.S. DATE SURVEYED: 05-10-16  
DRAWN BY: F.T.M. DATE DRAWN: 04-19-16  
SCALE: 1" = 60' REVISED: F.T.M. 06-13-16

**Tri State**  
Land Surveying, Inc.  
180 NORTH VERNAL AVE. VERNAL, UTAH 84078  
(435) 781-2501