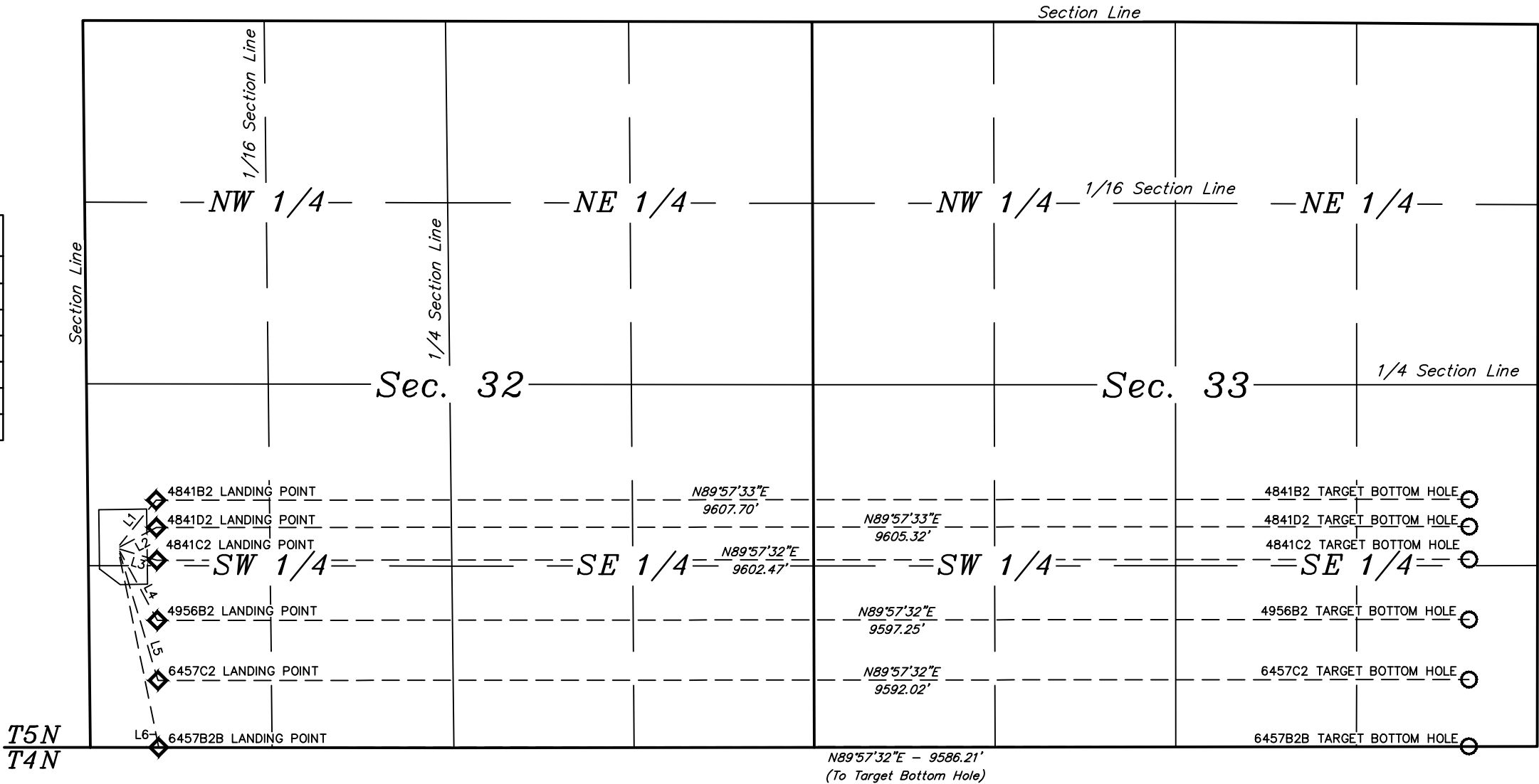




LEGEND:
○ = TARGET BOTTOM HOLE.
◇ = LANDING POINT.



| LINE TABLE | | |
|------------|-------------|----------|
| LINE | DIRECTION | LENGTH |
| L1 | N39°08'01"E | 422.58' |
| L2 | N62°01'20"E | 303.97' |
| L3 | S73°05'27"E | 282.97' |
| L4 | S28°28'59"E | 577.21' |
| L5 | S16°41'52"E | 973.29' |
| L6 | S11°33'29"E | 1420.36' |



REV: 1 07-11-16 C.C. (REMOVED 6457D2B WELL, AND GHOST PRODUCTION AREA)

NOTES:

BILL BARRETT CORPORATION

CVR 5-63-32 33 PAD
NW 1/4 SW 1/4, SECTION 32, T5N, R63W, 6th P.M.
WELD COUNTY, COLORADO

| | | | |
|-----------------|------------|-----------|------------|
| SURVEYED BY | Z.B., B.B. | 05-05-16 | SCALE |
| DRAWN BY | K.B. | 06-22-16 | 1" = 1000' |
| MULTI-WELL PLAN | | FIGURE #5 | |



UELS, LLC
Corporate Office * 85 South 200 East
Vernal, UT 84078 * (435) 789-1017