

PROCEED IN AN EASTERLY, THEN SOUTHEASTERLY DIRECTION FROM GREELEY, COLORADO ALONG US HIGHWAY 34 APPROXIMATELY 12.5 MILES TO THE JUNCTION OF THIS ROAD AND COUNTY ROAD 63 TO THE NORTH; TURN LEFT AND PROCEED IN A NORTHERLY DIRECTION APPROXIMATELY 340' TO THE BEGINNING OF THE PROPOSED ACCESS ROAD TO THE EAST; FOLLOW ROAD FLAGS IN AN EASTERLY DIRECTION APPROXIMATELY 70' TO THE PROPOSED LOCATION.

TOTAL DISTANCE FROM GREELEY, COLORADO TO THE PROPOSED LOCATION IS APPROXIMATELY 12.6 MILES.

**BILL BARRETT CORPORATION**

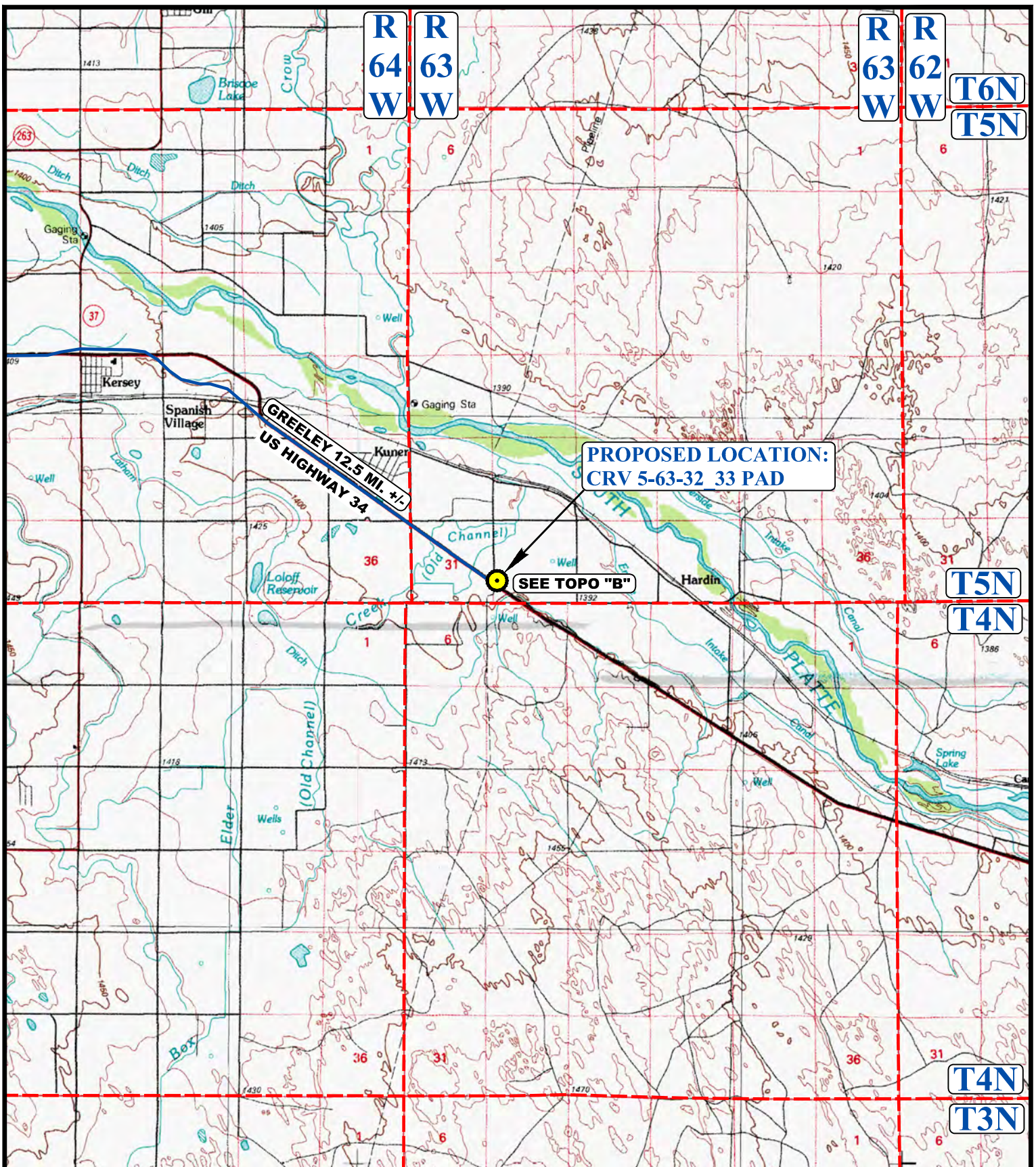
**CVR 5-63-32 33 PAD**  
**NW 1/4 SW 1/4, SECTION 32, T5N, R63W, 6th P.M.**  
**WELD COUNTY, COLORADO**



**UELS, LLC**  
Corporate Office \* 85 South 200 East  
Vernal, UT 84078 \* (435) 789-1017

SURVEYED BY	Z.B., B.B.	05-05-16	
DRAWN BY	J.L.G.	06-22-16	
ROAD DESCRIPTION			





# **LEGEND:**

 **PROPOSED LOCATION**



## **BILL BARRETT CORPORATION**

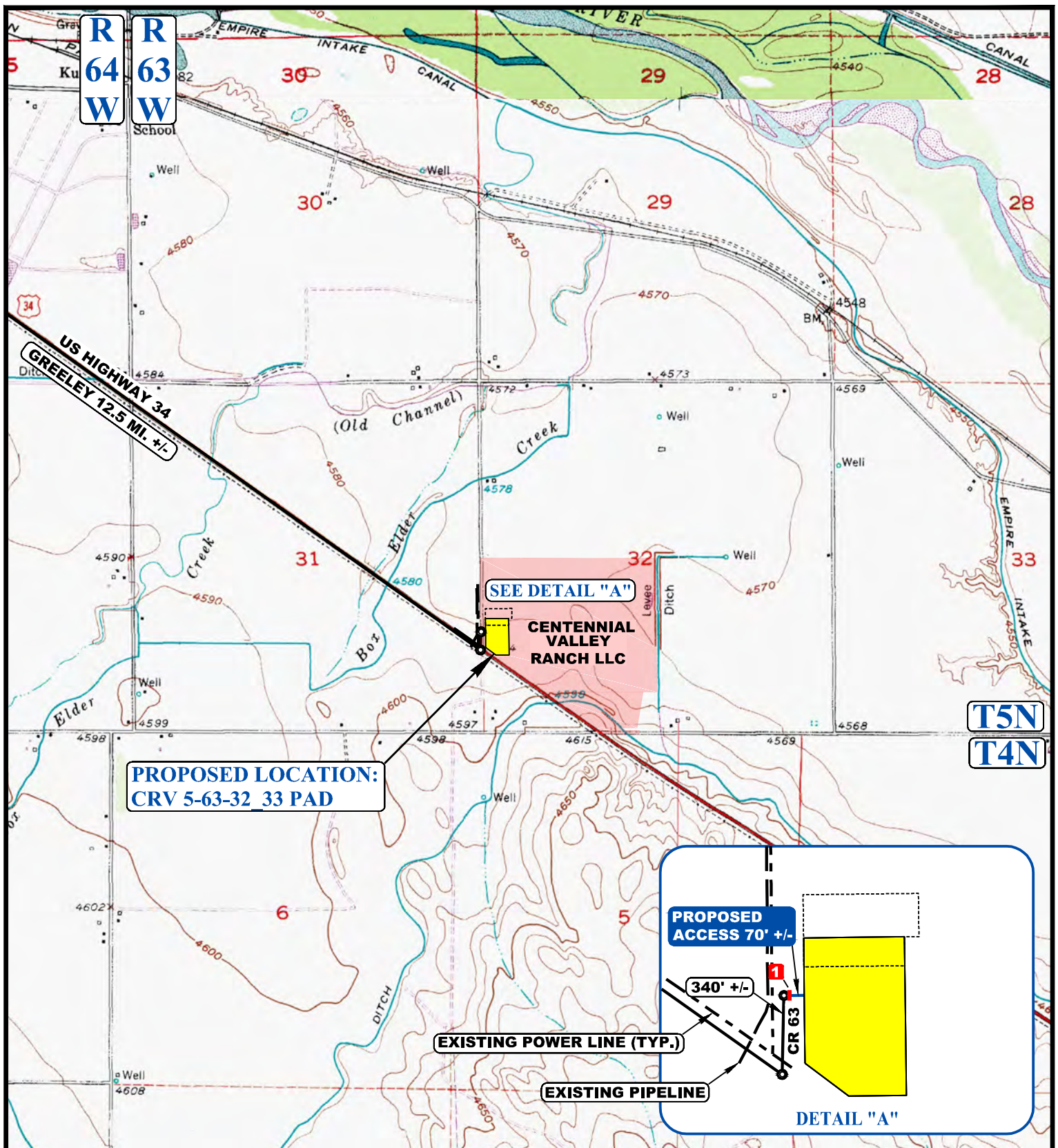
**CVR 5-63-32 33 PAD**  
**NW 1/4 SW 1/4, SECTION 32, T5N, R63W, 6th P.M.**  
**WELD COUNTY, COLORADO**



**UELS, LLC**  
 Corporate Office \* 85 South 200 East  
 Vernal, UT 84078 \* (435) 789-1017

SURVEYED BY	Z.B., B.B.	05-05-16	SCALE
DRAWN BY	J.L.G.	06-22-16	1 : 100,000
<b>ACCESS ROAD MAP</b>			<b>TOPO A</b>





NOTE: PARCEL DATA SHOWN HAS BEEN OBTAINED FROM VARIOUS SOURCES AND SHOULD BE USED FOR MAPPING, GRAPHIC AND PLANNING PURPOSES ONLY. NO WARRANTY IS MADE BY UINTAH ENGINEERING AND LAND SURVEYING (UELS) FOR ACCURACY OF THE PARCEL DATA.

#### LEGEND:

- EXISTING ROAD
- - - - PROPOSED ROAD
- - - - EXISTING POWER LINE
- - - - EXISTING PIPELINE
- 1 INSTALL 18" CULVERT



**UELS, LLC**  
Corporate Office \* 85 South 200 East  
Vernal, UT 84078 \* (435) 789-1017



#### BILL BARRETT CORPORATION

**CVR 5-63-32\_33 PAD**  
NW 1/4 SW 1/4, SECTION 32, T5N, R63W, 6th P.M.  
WELD COUNTY, COLORADO

SURVEYED BY	Z.B., B.B.	05-05-16	SCALE
DRAWN BY	J.L.G.	06-22-16	1 : 24,000
<b>ACCESS ROAD MAP</b>			<b>TOPO B</b>