



July 18, 2016

Mr. Matthew Lepore, Director
Colorado Oil & Gas Conservation Commission
1120 Lincoln Street, Ste. 801
Denver, Colorado 80203

RE: Rule 318.A.e.

GP-Jackson 1-17-13
GP-Jackson 2-17-13
GP-Jackson 3-17-13
GP-Jackson 4-17-13
GP-Jackson 5-17-13
GP-Jackson C6-17-13
GP-Jackson C7-17-13
GP-Jackson C8-17-13

Surface Location: NENE, Section 20, Township 5 North, Range 65 West, Weld County, CO

Dear Mr. Lepore,

Extraction Oil and Gas is planning to drill the captioned horizontal wells in accordance with the provision of COGCC Rule 318A.e.

The proposed wellbore spacing unit consists of:

Section 13-5N-66W: SE/4
Section 18-5N-65W: S/2
Section 17-5N-65W: SW/4

The spacing unit is a 640-acre wellbore spacing unit for the Niobrara and Codell formations. Extraction Oil and Gas hereby certifies to the Director that all Owners within the proposed spacing unit above were notified and 30 days have passed without objection. If you have any questions or issues regarding this permit, please contact Alyssa Andrews at (720) 481-2379.

Sincerely,

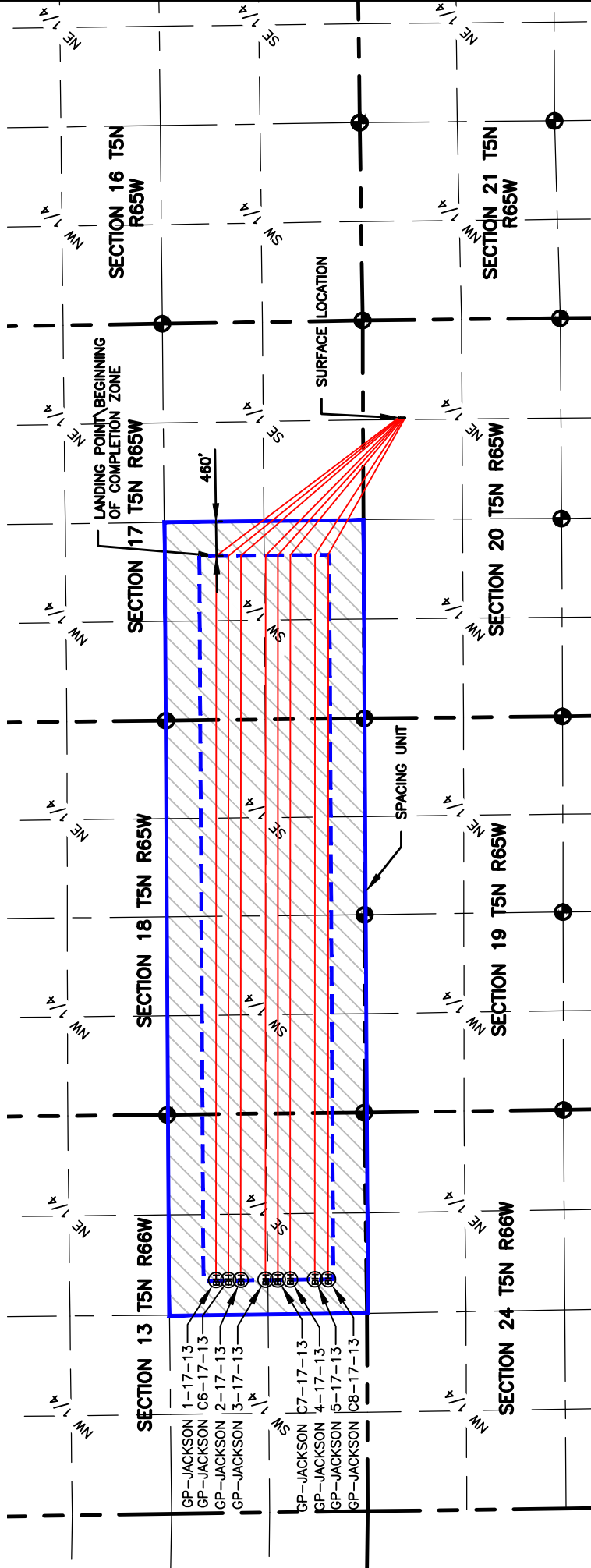
Alyssa Andrews
Regulatory Analyst
Extraction Oil & Gas, LLC


NAME: JACKSON
SPACING UNIT: SE/4 SEC 13, T5N, 66W S/2 SEC 18, SW/4 SEC 17, T5N, 65W UNIT ACREAGE: 640

| WELL NAME | SURFACE LOCATION | | | LANDING POINT/BEGIN HORIZONTAL COMPLETION ZONE | | | | BOTTOM HOLE/END HORIZONTAL COMPLETION ZONE | | | | COMPLETION ZONE BEARING | COMPLETION ZONE LENGTH |
|---------------------|------------------|------|-------|--|-------|------|-------|--|-------|------|-------|-------------------------|------------------------|
| | DIST. | DIR. | DIST. | DIR. | DIST. | DIR. | DIST. | DIR. | DIST. | DIR. | DIST. | | |
| GP-JACKSON 1-17-13 | 447' | FNL | 1305' | FEL | 1969' | FSL | 2190' | FWL | 2010' | FSL | 2216' | FEL | 9672.85 |
| GP-JACKSON C6-17-13 | 489' | FNL | 1305' | FEL | 1804' | FSL | 2191' | FWL | 1845' | FSL | 2216' | FEL | 9673.94 |
| GP-JACKSON 2-17-13 | 501' | FNL | 1305' | FEL | 1639' | FSL | 2191' | FWL | 1680' | FSL | 2218' | FEL | 9675.04 |
| GP-JACKSON 3-17-13 | 513' | FNL | 1305' | FEL | 1309' | FSL | 2193' | FWL | 1350' | FSL | 2219' | FEL | 9677.23 |
| GP-JACKSON C7-17-13 | 526' | FNL | 1305' | FEL | 1144' | FSL | 2193' | FWL | 1185' | FSL | 2219' | FEL | 9678.32 |
| GP-JACKSON 4-17-13 | 538' | FNL | 1305' | FEL | 979' | FSL | 2193' | FWL | 1020' | FSL | 2220' | FEL | 9679.42 |
| GP-JACKSON 5-17-13 | 550' | FNL | 1305' | FEL | 649' | FSL | 2195' | FWL | 690' | FSL | 2221' | FEL | 9681.61 |
| GP-JACKSON C8-17-13 | 562' | FNL | 1305' | FEL | 472' | FSL | 2196' | FWL | 513' | FSL | 2222' | FEL | 9682.78 |



0 2000
SCALE: 1" = 2000'
U.S. SURVEY FEET





LAMP RYNEARSON & ASSOCIATES

4715 Innovation Drive
Fort Collins, CO 80525
www.LRA-Inc.com

PLANNED SPACING UNIT EXHIBIT
GREELEY DIRECTIONAL
JACKSON SPACING UNIT

DATE: 9/22/16
DRAWN BY: JMC
PATH/FILENAME: P:\engineering\0213001\01\DRAWINGS\EXHIBITS\Planned Spacing Unit\0013001_01.dwg

COGOC ID: 332837
PROJECT - TASK NUMBER: 0213001.01

BOOK AND PAGE: MR01/MR02

SURFACE - LOCATION: NE/4, NE/4, SEC20, T5N, R65W

LEGEND

- ALIQUOT CORNER
- BOTTOM HOLE
- COMPUTED ALIQUOT CORNER FROM MONUMENT ACCESSORIES
- COMPUTED FROM GLO RECORDS
- SECTION LINE
- SIXTEENTH LINE
- QUARTER SECTION LINE