

#### NOTES:

1. DISTANCES ARE MEASURED PERPENDICULAR TO NEAREST SECTION LINE AND ARE SHOWN ON THE SAME SIDE OF THE SECTION LINE WHERE THE WELL IS LOCATED.
2. THIS MAP DOES NOT REPRESENT A MONUMENTED BOUNDARY SURVEY. SIXTEENTH CORNER LOCATIONS ARE COMPUTED, UNLESS OTHERWISE NOTED.
3. BOTTOM HOLE LOCATIONS AND HORIZONTAL COMPLETION ZONE PROVIDED BY OTHERS.

#### BASIS OF BEARING:

THE NORTH LINE OF THE NORTHEAST QUARTER OF SECTION 20-T5N-R65W BEARS N89°44'34"E BETWEEN THE NORTH QUARTER CORNER OF SECTION 20 MONUMENTED WITH 3 1/4" A.C. IN R.B. STAMPED "PLS 36053" AND THE NORTHEAST CORNER OF SECTION 20 MONUMENTED WITH A 3 1/4" A.C. IN R.B. STAMPED "LS 34990" BASED ON THE COLORADO NORTH 0501 STATE PLANE COORDINATE SYSTEM.

ELEVATIONS ARE BASED ON NAVD 88, AS OBSERVED FROM GPS OBSERVATIONS

#### LEGEND

- ALIQUOT CORNER A.C. ALUMINUM CAP
- ⊙ BOTTOM HOLE R.B. RANGE BOX
- PROPOSED WELL

#### LAND SURVEYOR'S CERTIFICATION

LAMP, RYNEARSON & ASSOCIATES, INC., OF FT. COLLINS, COLORADO HAS, IN ACCORDANCE WITH A REQUEST FROM DUSTIN DYK FROM EXTRACTION OIL AND GAS, DETERMINED THE SURFACE LOCATION OF THE WELL DESIGNATED AS GP-JACKSON C7-17-13 TO BE 526' FROM THE NORTH LINE AND 1305' FROM THE EAST LINE OF SECTION 20, TOWNSHIP 5 NORTH, RANGE 65 WEST OF THE 6TH P.M., WELD COUNTY, COLORADO.



FRANK A. KOHL  
 COLORADO PLS 37067  
 DATE OF SURVEY: 8/19/2010 (SECTION CONTROL)  
 DATE OF SURVEY: 7/31/2014 (WELL LOCATION)

0 1000  
 SCALE: 1" = 1000'  
 U.S. SURVEY FEET



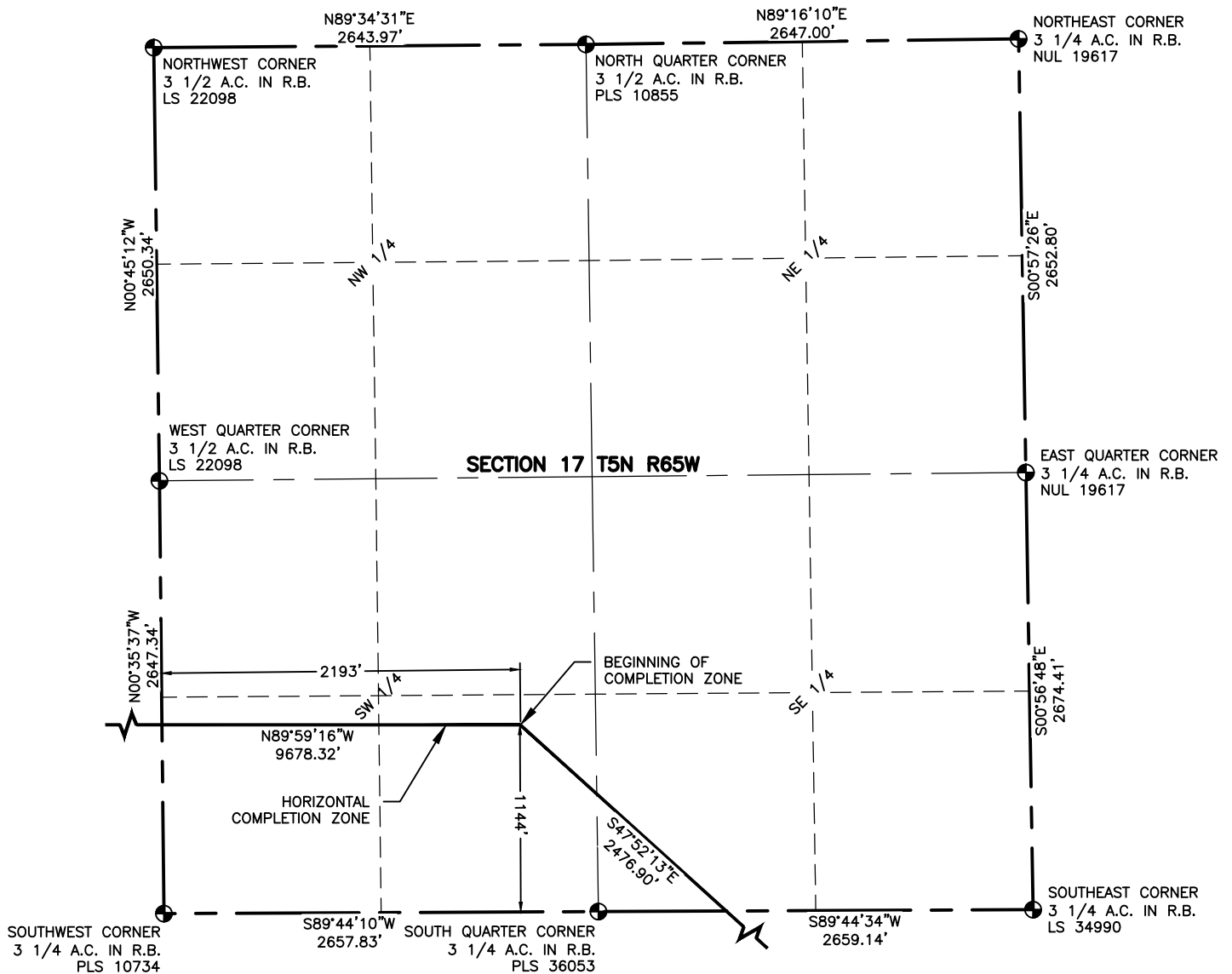
4715 Innovation Drive 970.226.0342 | P  
 Fort Collins, CO 80525 970.226.0879 | F  
 www.LRA-Inc.com

PROPOSED WELL LOCATION EXHIBIT  
 GP-JACKSON C7-17-13  
 1 OF 4

DRAWN BY JMC  
 DATE 9/22/16  
 COGCC ID 332837  
 PROJECT - TASK NUMBER 0213001.01  
 BOOK AND PAGE MR01/MR02

**SURFACE - LOCATION**  
 NE/4, NE/4, SEC20, T5N, R65W

PATH\FILENAME p:\\_engineering\0213001.01\DRAWINGS\EXHIBITS\0211012-04EXWPC13.dwg



#### NOTES:

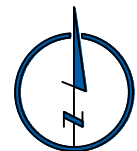
DISTANCES ARE MEASURED PERPENDICULAR TO NEAREST SECTION LINE AND ARE SHOWN ON THE SAME SIDE OF THE SECTION LINE WHERE THE WELL IS LOCATED.

THIS MAP DOES NOT REPRESENT A MONUMENTED BOUNDARY SURVEY.

SIXTEENTH CORNER LOCATIONS ARE COMPUTED, UNLESS OTHERWISE NOTED.

#### LEGEND

- ALIQUOT CORNER
- ⊙ BOTTOM HOLE
- A.C. ALUMINUM CAP
- R.B. RANGE BOX



0 1000  
 SCALE: 1"= 1000'  
 U.S. SURVEY FEET



**LAMP RYNEARSON**  
 & ASSOCIATES

4715 Innovation Drive 970.226.0342 | P  
 Fort Collins, CO 80525 970.226.0879 | F  
[www.LRA-Inc.com](http://www.LRA-Inc.com)

PROPOSED WELL LOCATION EXHIBIT  
 GP-JACKSON C7-17-13  
 2 OF 4

**DRAWN BY**  
 JMC  
**PATH\FILENAME**

**DATE**  
 9/22/16

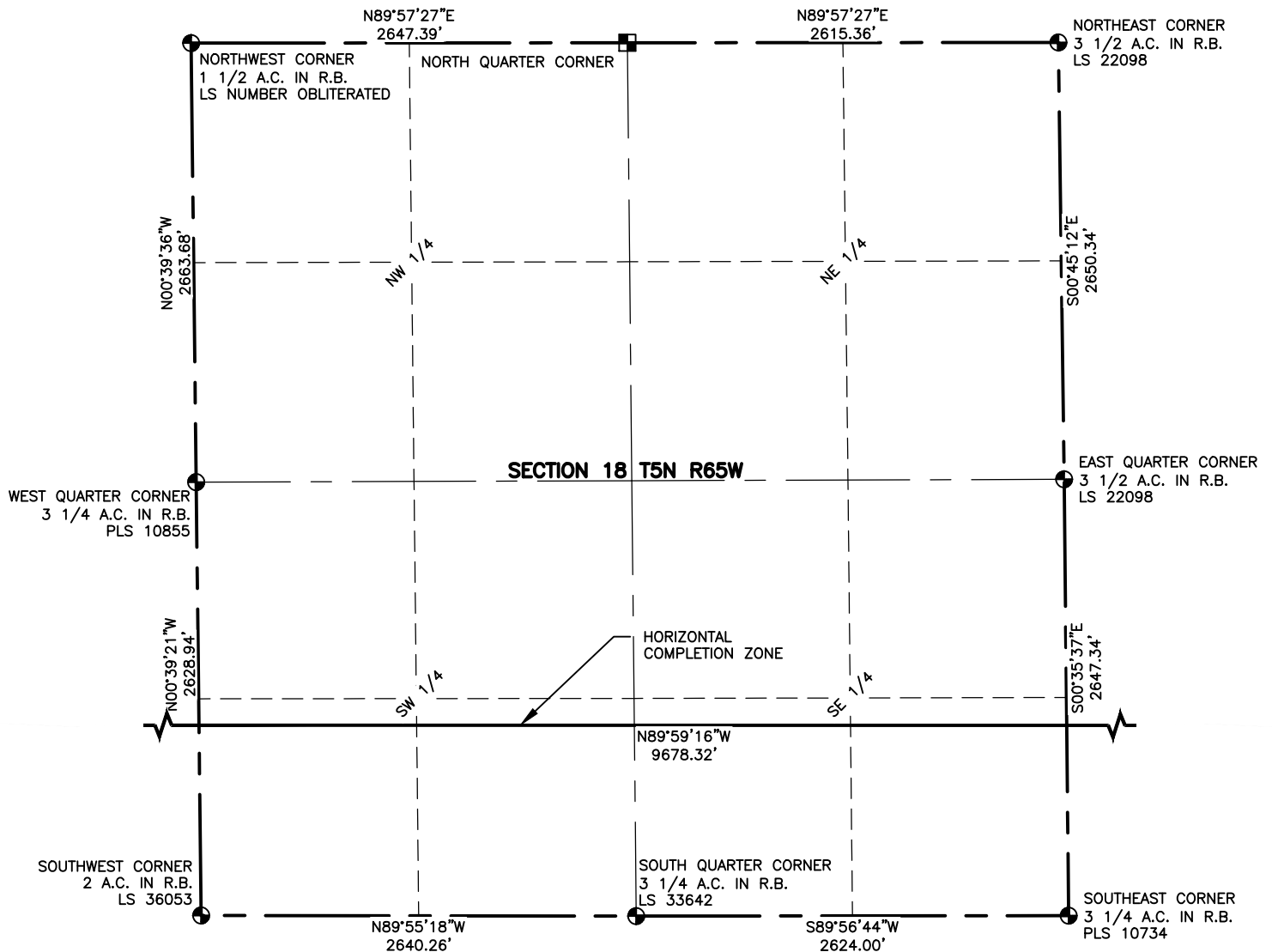
**COGCC ID**  
 332837

**PROJECT - TASK NUMBER**  
 0213001.01

**BOOK AND PAGE**  
 MR01/MR02

**SURFACE - LOCATION**  
 NE/4,NE/4, SEC20, T5N, R65W

p:\\_engineering\0213001.01\DRAWINGS\EXHIBITS\0211012-04EXWPC13B.dwg

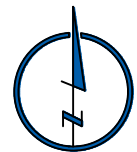


#### NOTES:

- DISTANCES ARE MEASURED PERPENDICULAR TO NEAREST SECTION LINE AND ARE SHOWN ON THE SAME SIDE OF THE SECTION LINE WHERE THE WELL IS LOCATED.
- THIS MAP DOES NOT REPRESENT A MONUMENTED BOUNDARY SURVEY.
- SIXTEENTH CORNER LOCATIONS ARE COMPUTED, UNLESS OTHERWISE NOTED.

#### LEGEND

- ALIQUOT CORNER
- BOTTOM HOLE
- COMPUTED ALIQUOT CORNER FROM GLO RECORDS
- A.C. ALUMINUM CAP
- R.B. RANGE BOX



0 1000

SCALE: 1"= 1000'  
U.S. SURVEY FEET



**LAMP RYNEARSON**  
& ASSOCIATES

4715 Innovation Drive 970.226.0342 | P  
Fort Collins, CO 80525 970.226.0879 | F  
[www.LRA-Inc.com](http://www.LRA-Inc.com)

PROPOSED WELL LOCATION EXHIBIT  
GP-JACKSON C7-17-13  
3 OF 4

DRAWN BY  
JMC

DATE  
9/22/16

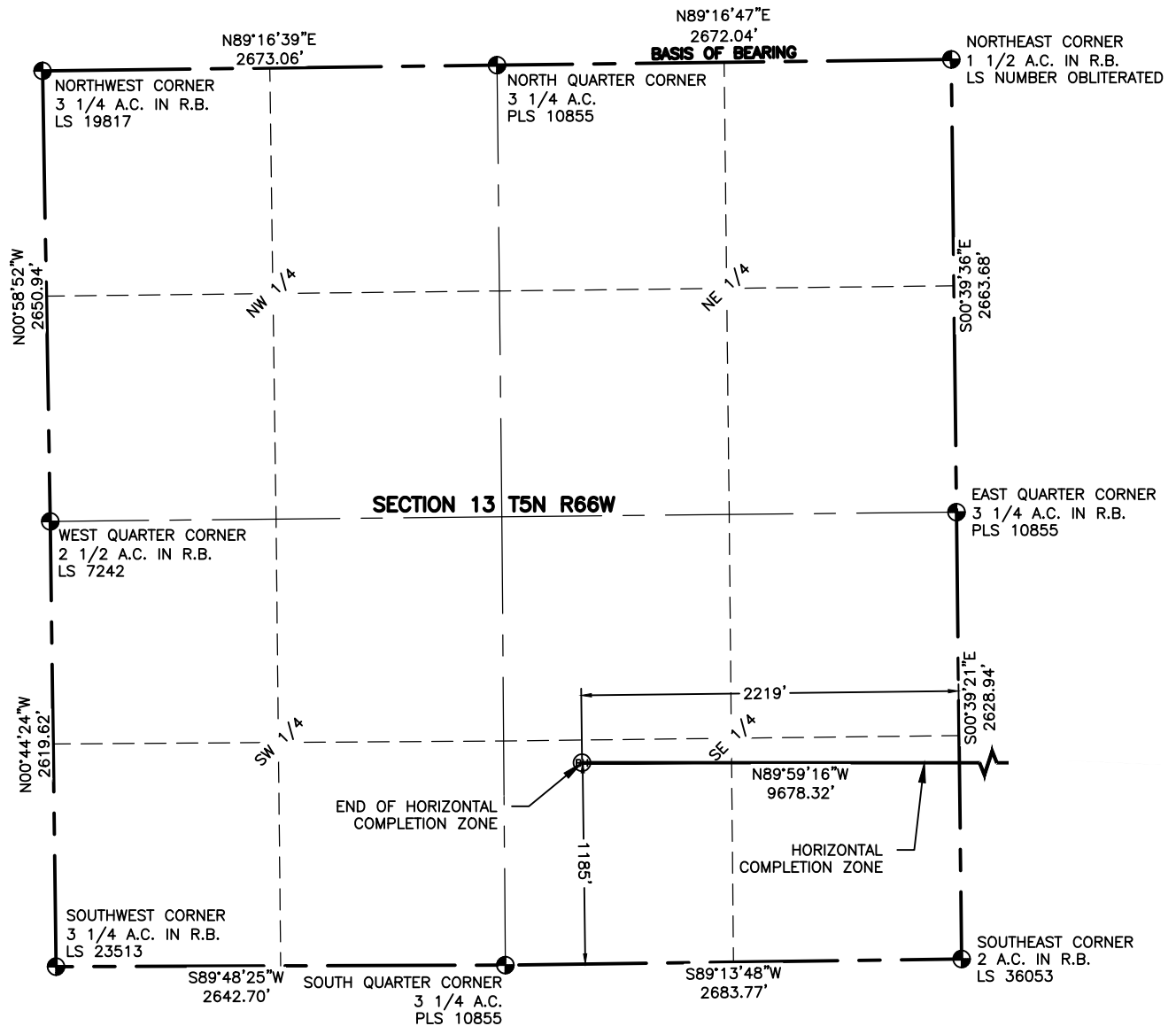
COGCC ID  
332837

PROJECT - TASK NUMBER  
0213001.01

BOOK AND PAGE  
MR01/MR02

**SURFACE - LOCATION**  
NE/4, NE/4, SEC20, T5N, R65W

PATH\FILENAME p:\\_engineering\0213001.01\DRAWINGS\EXHIBITS\0211012-04EXWPC13A.dwg

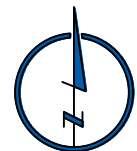


#### NOTES:

1. DISTANCES ARE MEASURED PERPENDICULAR TO NEAREST SECTION LINE AND ARE SHOWN ON THE SAME SIDE OF THE SECTION LINE WHERE THE WELL IS LOCATED.
2. THIS MAP DOES NOT REPRESENT A MONUMENTED BOUNDARY SURVEY. SIXTEENTH CORNER LOCATIONS ARE COMPUTED, UNLESS OTHERWISE NOTED.
3. BOTTOM HOLE LOCATIONS AND HORIZONTAL COMPLETION ZONE PROVIDED BY OTHERS.

#### LEGEND

- ALIQUOT CORNER
- ⊙ BOTTOM HOLE
- A.C. ALUMINUM CAP
- R.B. RANGE BOX



0 1000  
SCALE: 1"= 1000'  
U.S. SURVEY FEET



**LAMP RYNEARSON**  
& ASSOCIATES

4715 Innovation Drive 970.226.0342 | P  
Fort Collins, CO 80525 970.226.0879 | F  
[www.LRA-Inc.com](http://www.LRA-Inc.com)

PROPOSED WELL LOCATION EXHIBIT  
GP-JACKSON C7-17-13  
4 OF 4

DRAWN BY  
JMC  
PATH\FILENAME

DATE  
9/22/16

COGCC ID  
332837

PROJECT - TASK NUMBER  
0213001.01

BOOK AND PAGE  
MR01/MR02

SURFACE - LOCATION  
NE/4,NE/4, SEC20, T5N, R65W

p:\\_engineering\0213001.01\DRAWINGS\EXHIBITS\0211012-04EXWPC13C.dwg