

K:\LANDARKO\2014\2014.116.HIGHLANDS SEC. 9, T1N, R66W\PLATS\HIGHLANDS 27C-33HZ WEST.dwg, 6/27/2016 12:45:35 PM, lba

T1N, R66W

WELL BORE CONTINUES
INTO SECTION 4

E. 1/16 COR.
SEC. 4 & SEC. 9
T1N, R66W
FOUND 2" ALUM. CAP
L.S. NO. 25937

NE. COR.
SEC. 9, T1N, R66W
FOUND 2" ALUM. CAP
ILLEGIBLE

MATCH LINE
SEE SHEET 2

NW. COR.
SEC. 9, T1N, R66W
FOUND 2 1/2" ALUM. CAP
ILLEGIBLE

S 89°14'02" W 2651.03' (M)

N. 1/4 COR.
SEC. 9, T1N, R66W
FOUND 3 1/4" ALUM. CAP
L.S. NO. 13155

S 89°00'20" W
1325.34' (M)

S 88°59'19" W
1325.59' (M)

HIGHLANDS 2C-33HZ
SURFACE LOCATION

N 00°36'52" W
2656.84' (M)

1103'

1469'

1976'

HEEL LOCATION

N 00°28'15" W
1342.84' (M)

N. 1/16 COR.
SEC. 9 & SEC. 10
T1N, R66W
SET 2 1/2" ALUM. CAP
P.L.S. NO. 38512

N 00°28'13" W
1341.61' (M)

E. 1/4 COR.
SEC. 9, T1N, R66W
FOUND 3 1/4" ALUM. CAP
L.S. NO. 34995

N 00°28'42" W
1293.35' (M)

S. 1/16 COR.
SEC. 9 & SEC. 10
T1N, R66W
FOUND 2 1/2" ALUM. CAP
L.S. NO. 38046

N 00°28'54" W
1293.26' (M)

SE. COR.
SEC. 9, T1N, R66W
FOUND 3 1/4" ALUM. CAP
L.S. NO. 30086

SURFACE LOCATION: NAD 83
GROUND ELEVATION= 4994.0'
LATITUDE= 40.072209°
LONGITUDE= -104.778002°
LATITUDE= 40°04'19.953"
LONGITUDE= -104°46'40.808"
HEEL LOCATION: NAD 83
LATITUDE= 40.069964°
LONGITUDE= -104.779813°
LATITUDE= 40°04'11.869"
LONGITUDE= -104°46'47.327"
BOTTOM HOLE LOCATION: NAD 83
LATITUDE= 40.087876°
LONGITUDE= -104.780239°
LATITUDE= 40°05'16.354"
LONGITUDE= -104°46'48.860"

S 89°35'15" W
2641.94' (M)

CENTER 1/4 COR.
SEC. 9, T1N, R66W
FOUND 3 1/4" ALUM. CAP
L.S. NO. 38046

S 89°35'39" W
2644.15' (M)

9

N 00°36'41" W
1307.82' (M)

CS. 1/16 COR.
SEC. 9, T1N, R66W
FOUND 2 1/2" ALUM. CAP
L.S. NO. 38046

S 89°03'21" W
1318.84' (M)
SW. 1/16 COR.
SEC. 9, T1N, R66W
FOUND 3 1/4" ALUM. CAP
W.C. 25' NORTH
L.S. NO. 30086

N 00°47'43" W
1320.25' (M)

S. 1/16 COR.
SEC. 9 & SEC. 8
T1N, R66W
FOUND 2" ALUM. CAP
L.S. NO. 25937

N 00°47'58" W
1320.78' (M)

SW. COR.
SEC. 9, T1N, R66W
FOUND 3 1/4" ALUM. CAP
ILLEGIBLE

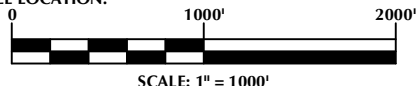
S 89°01'56" W 2633.46' (M)

S 88°58'05" W 2638.21' (M)

S. 1/4 COR.
SEC. 9, T1N, R66W
FOUND 3 1/4" ALUM. CAP
L.S. NO. 30086

NOTES:

- ▲ INDICATES SECTION CORNER
- INDICATES CALCULATED CORNER
- ELEVATION BASED ON NAVD88 (GEOID09)
- BASIS OF BEARING DERIVED FROM COLORADO COORDINATE SYSTEM OF 1983 NORTH ZONE.
- ALL MEASURED DISTANCES ARE GRID.
COMBINED SCALE FACTOR: .99972674 CALCULATED FROM THE N. 1/4 CORNER OF SECTION 9, T1N, R66W
OPERATOR: ROB WILSON / PDOP = 1.5
- SEE ADDENDUM TO WELL LOCATION CERTIFICATE FOR EXISTING IMPROVEMENTS WITHIN 500' OF THE WELL PAD.
- WELL FOOTAGES ARE MEASURED AT RIGHT ANGLES TO THE SECTION LINES.
- THE BOTTOM OF HOLE BEARS N01°30'41"W, 6526' FROM THE HEEL LOCATION.

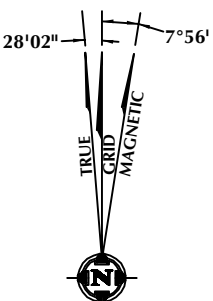


CERTIFICATE OF SURVEYOR:

THIS IS TO CERTIFY THAT THE ABOVE PLAT WAS PREPARED FROM FIELD NOTES OF ACTUAL SURVEY MADE BY ME OR UNDER MY SUPERVISION AND THAT THE SAME ARE TRUE AND CORRECT TO THE BEST OF MY KNOWLEDGE AND BELIEF. THIS CERTIFICATE DOES NOT REPRESENT A LAND SURVEY PLAT OR IMPROVEMENT SURVEY PLAT AS DEFINED BY C.R.S. 38-51-302 AND CANNOT BE RELIED UPON TO DETERMINE OWNERSHIP.

Randall K. French
RANDALL K. FRENCH
PROFESSIONAL LAND SURVEYOR
COLORADO REGISTRATION NUMBER 38512

NOTICE:
ACCORDING TO COLORADO STATE LAW YOU MUST COMMENCE ANY LEGAL ACTION BASED UPON ANY DEFECT IN THIS SURVEY WITHIN THREE YEARS AFTER YOU FIRST DISCOVER SUCH DEFECT. IN NO EVENT MAY ANY ACTION BASED UPON ANY DEFECT IN THIS SURVEY BE COMMENCED MORE THAN TEN YEARS FROM THE DATE ON THE CERTIFICATION SHOWN HEREON.



NOTE:
MAGNETIC NORTH IS CURRENT AS OF 6/12/2015.
MAGNETIC NORTH CHANGES WEST 0°06' PER YEAR.

WELL PAD - HIGHLANDS 27C-33HZ

HIGHLANDS 2C-33HZ
WELL LOCATION CERTIFICATE
290' FNL & 1469' FEL NWNE (SURFACE)
1103' FNL & 1976' FEL NWNE (HEEL)
LOCATED IN SECTION 9
T1N, R66W, 6TH P.M.
185' FSL & 2112' FEL SWSE (BOTTOM)
LOCATED IN SECTION 33
T2N, R66W, 6TH P.M.
WELD COUNTY, COLORADO

Kerr-McGee Oil &
Gas Onshore L.P.
1099 18th Street
Denver, Colorado 80202



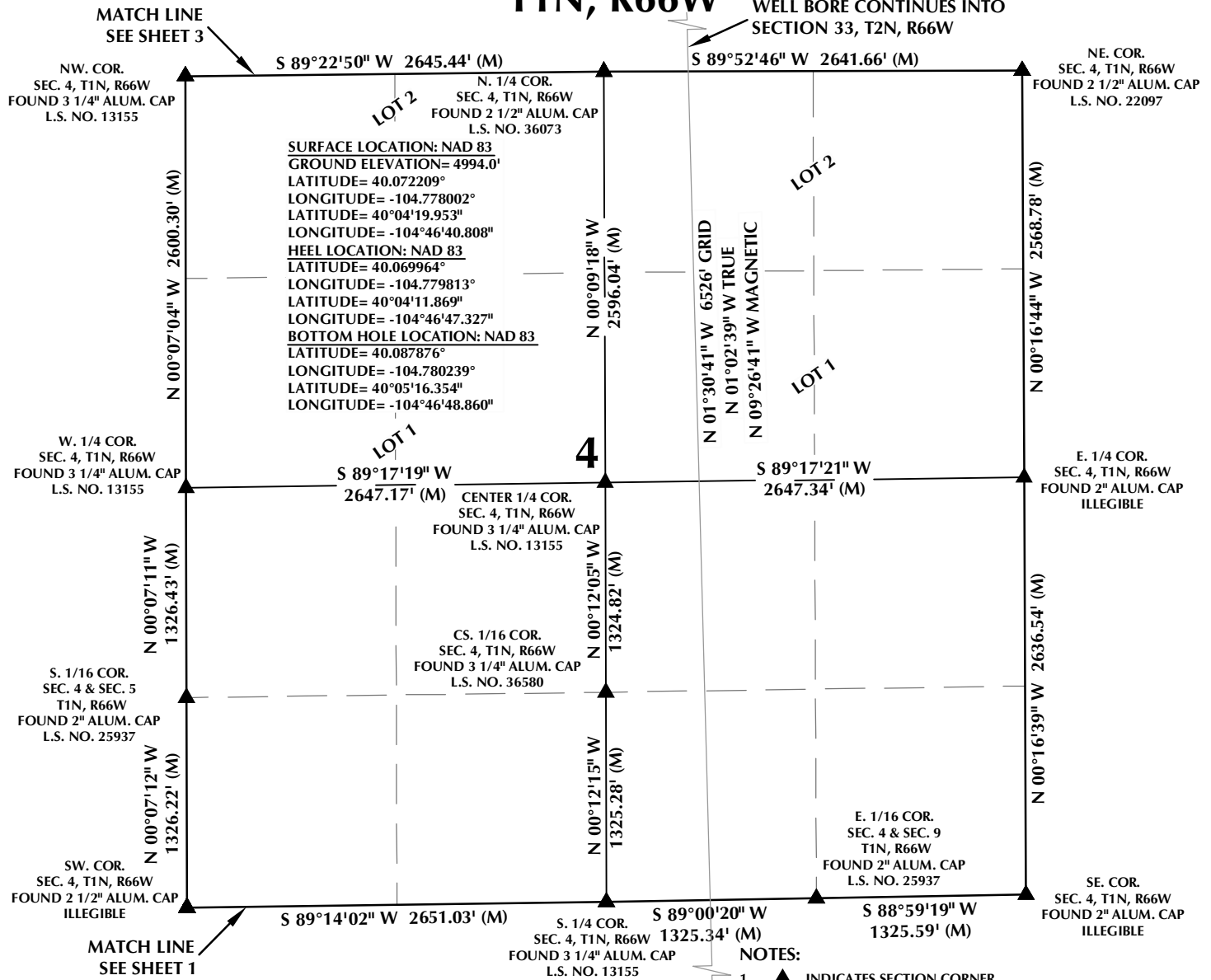
CONSULTING, LLC

SHERIDAN OFFICE
1095 Saberton Avenue
Sheridan, Wyoming 82801
Phone 307-674-0609

LOVELAND OFFICE
1635 Foxtrail Drive, Suite 204
Loveland, Colorado 80538
Phone 970-776-4331

DRAFTED BY:	LMO	CHECKED BY:	RKF	SHEET NO:
DATE DRAFTED:	6/19/15	DATE SURVEYED:	3/13/15	1
REVISED:	6/23/16	FILE NAME:	14-116	1 OF 3

T1N, R66W

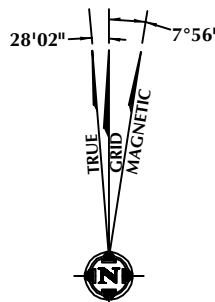


CERTIFICATE OF SURVEYOR:

THIS IS TO CERTIFY THAT THE ABOVE PLAT WAS PREPARED FROM FIELD NOTES OF ACTUAL SURVEY MADE BY ME OR UNDER MY SUPERVISION AND THAT THE SAME ARE TRUE AND CORRECT TO THE BEST OF MY KNOWLEDGE AND BELIEF. THIS CERTIFICATE DOES NOT REPRESENT A LAND SURVEY PLAT OR IMPROVEMENT SURVEY PLAT AS DEFINED BY C.R.S. 38-51-302 AND CANNOT BE RELIED UPON TO DETERMINE OWNERSHIP.

Randall K. French
 RANDALL K. FRENCH
 PROFESSIONAL LAND SURVEYOR
 COLORADO REGISTRATION NUMBER 18512

NOTICE:
 ACCORDING TO COLORADO STATE LAW YOU MUST COMMENCE ANY LEGAL ACTION BASED UPON ANY DEFECT IN THIS SURVEY WITHIN THREE YEARS AFTER YOU FIRST DISCOVER SUCH DEFECT. IN NO EVENT MAY ANY ACTION BASED UPON ANY DEFECT IN THIS SURVEY BE COMMENCED MORE THAN TEN YEARS FROM THE DATE ON THE CERTIFICATION SHOWN HEREON.



NOTE:
 MAGNETIC NORTH IS CURRENT AS OF 6/12/2015.
 MAGNETIC NORTH CHANGES WEST 0°06' PER YEAR.

WELL PAD - HIGHLANDS 27C-33HZ

HIGHLANDS 2C-33HZ
WELL LOCATION CERTIFICATE
 290' FNL & 1469' FEL NWNE (SURFACE)
 1103' FNL & 1976' FEL NWNE (HEEL)
 LOCATED IN SECTION 9
 T1N, R66W, 6TH P.M.
 185' FSL & 2112' FEL SWSE (BOTTOM)
 LOCATED IN SECTION 33
 T2N, R66W, 6TH P.M.
 WELD COUNTY, COLORADO

**Kerr-McGee Oil &
 Gas Onshore L.P.**
 1099 18th Street
 Denver, Colorado 80202



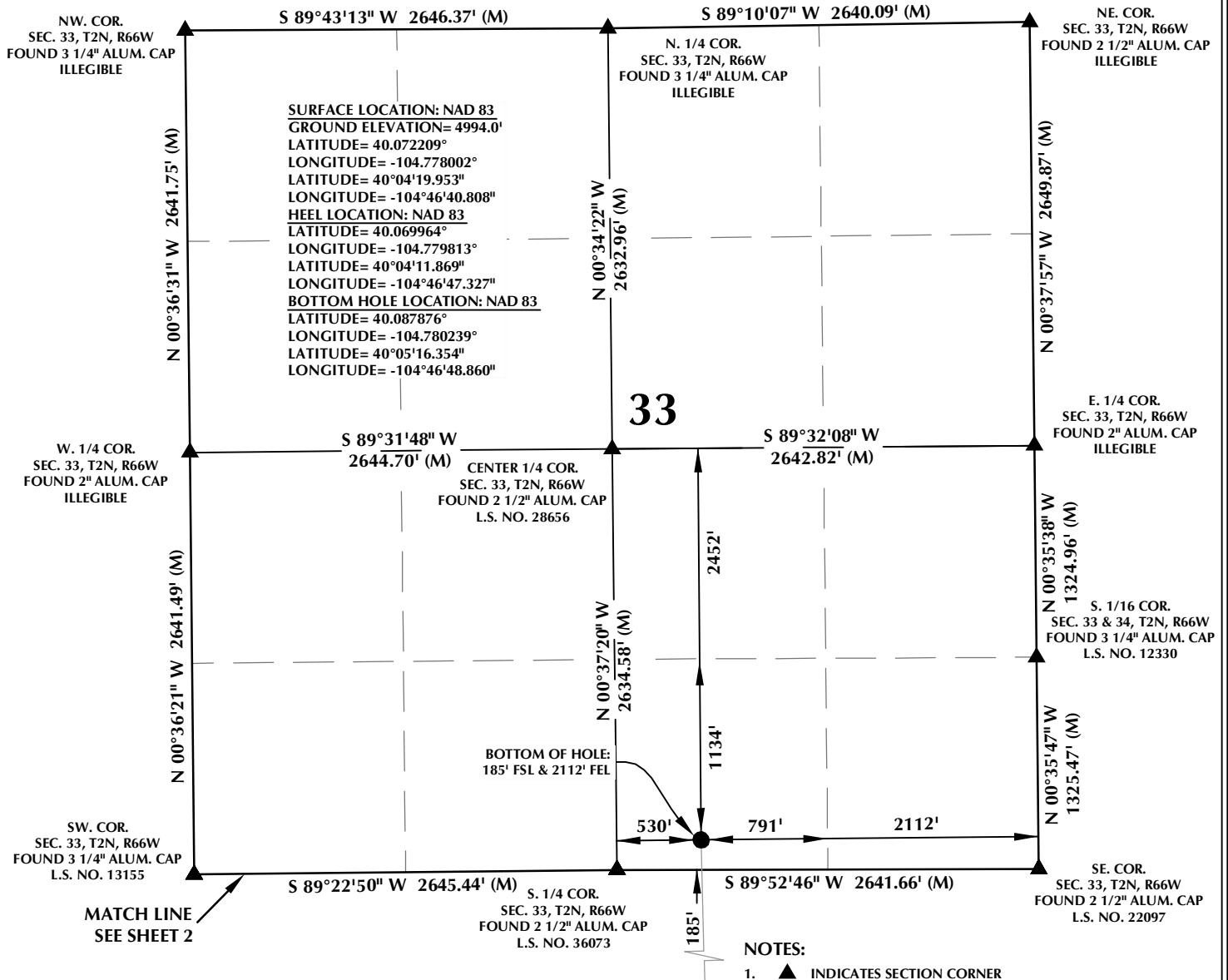
CONSULTING, LLC

SHERIDAN OFFICE
 1095 Saberton Avenue
 Sheridan, Wyoming 82801
 Phone 307-674-0609

LOVELAND OFFICE
 1635 Foxtrail Drive, Suite 204
 Loveland, Colorado 80538
 Phone 970-776-4331

DRAFTED BY:	LMO	CHECKED BY:	RKF	SHEET NO:
DATE DRAFTED:	6/19/15	DATE SURVEYED:	3/13/15	2
REVISED:	6/23/16	FILE NAME:	14-116	2 OF 3

T2N, R66W

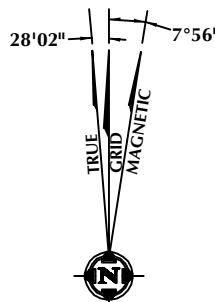


CERTIFICATE OF SURVEYOR:

THIS IS TO CERTIFY THAT THE ABOVE PLAT WAS PREPARED FROM FIELD NOTES OF ACTUAL SURVEY MADE BY ME OR UNDER MY SUPERVISION AND THAT THE SAME ARE TRUE AND CORRECT TO THE BEST OF MY KNOWLEDGE AND BELIEF. THIS CERTIFICATE DOES NOT REPRESENT A LAND SURVEY PLAT OR IMPROVEMENT SURVEY PLAT AS DEFINED BY C.R.S. 38-51-302 AND CANNOT BE RELIED UPON TO DETERMINE OWNERSHIP.

Randall K. French
RANDALL K. FRENCH
 PROFESSIONAL LAND SURVEYOR
 COLORADO REGISTRATION NUMBER 18512

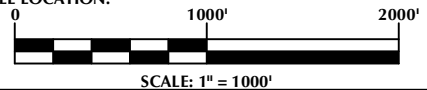
NOTICE:
 ACCORDING TO COLORADO STATE LAW YOU MUST COMMENCE ANY LEGAL ACTION BASED UPON ANY DEFECT IN THIS SURVEY WITHIN THREE YEARS AFTER YOU FIRST DISCOVER SUCH DEFECT. IN NO EVENT MAY ANY ACTION BASED UPON ANY DEFECT IN THIS SURVEY BE COMMENCED MORE THAN TEN YEARS FROM THE DATE ON THE CERTIFICATION SHOWN HEREON.



NOTE:
 MAGNETIC NORTH IS CURRENT AS OF 6/12/2015.
 MAGNETIC NORTH CHANGES WEST 0°06' PER YEAR.

NOTES:

- ▲ INDICATES SECTION CORNER
- INDICATES CALCULATED CORNER
- ELEVATION BASED ON NAVD88 (GEOID09)
- BASIS OF BEARING DERIVED FROM COLORADO COORDINATE SYSTEM OF 1983 NORTH ZONE.
- ALL MEASURED DISTANCES ARE GRID.
 COMBINED SCALE FACTOR: .99972674 CALCULATED FROM THE N. 1/4 CORNER OF SECTION 9, T1N, R66W
 OPERATOR: ROB WILSON / PDOP = 1.5
- SEE ADDENDUM TO WELL LOCATION CERTIFICATE FOR EXISTING IMPROVEMENTS WITHIN 500' OF THE WELL PAD.
- WELL FOOTAGES ARE MEASURED AT RIGHT ANGLES TO THE SECTION LINES.
- THE BOTTOM OF HOLE BEARS N01°30'41"W, 6526' FROM THE HEEL LOCATION.



WELL PAD - HIGHLANDS 27C-33HZ

HIGHLANDS 2C-33HZ
 WELL LOCATION CERTIFICATE
 290' FNL & 1469' FEL NWNE (SURFACE)
 1103' FNL & 1976' FEL NWNE (HEEL)
 LOCATED IN SECTION 9
 T1N, R66W, 6TH P.M.
 185' FSL & 2112' FEL SWSE (BOTTOM)
 LOCATED IN SECTION 33
 T2N, R66W, 6TH P.M.
 WELD COUNTY, COLORADO

**Kerr-McGee Oil &
 Gas Onshore L.P.**
 1099 18th Street
 Denver, Colorado 80202



CONSULTING, LLC

SHERIDAN OFFICE
 1095 Saberton Avenue
 Sheridan, Wyoming 82801
 Phone 307-674-0609

LOVELAND OFFICE
 1635 Foxtrail Drive, Suite 204
 Loveland, Colorado 80538
 Phone 970-776-4331

DRAFTED BY:	LMO	CHECKED BY:	RKF	SHEET NO:
DATE DRAFTED:	6/19/15	DATE SURVEYED:	3/13/15	3
REVISED:	6/23/16	FILE NAME:	14-116	3 OF 3