

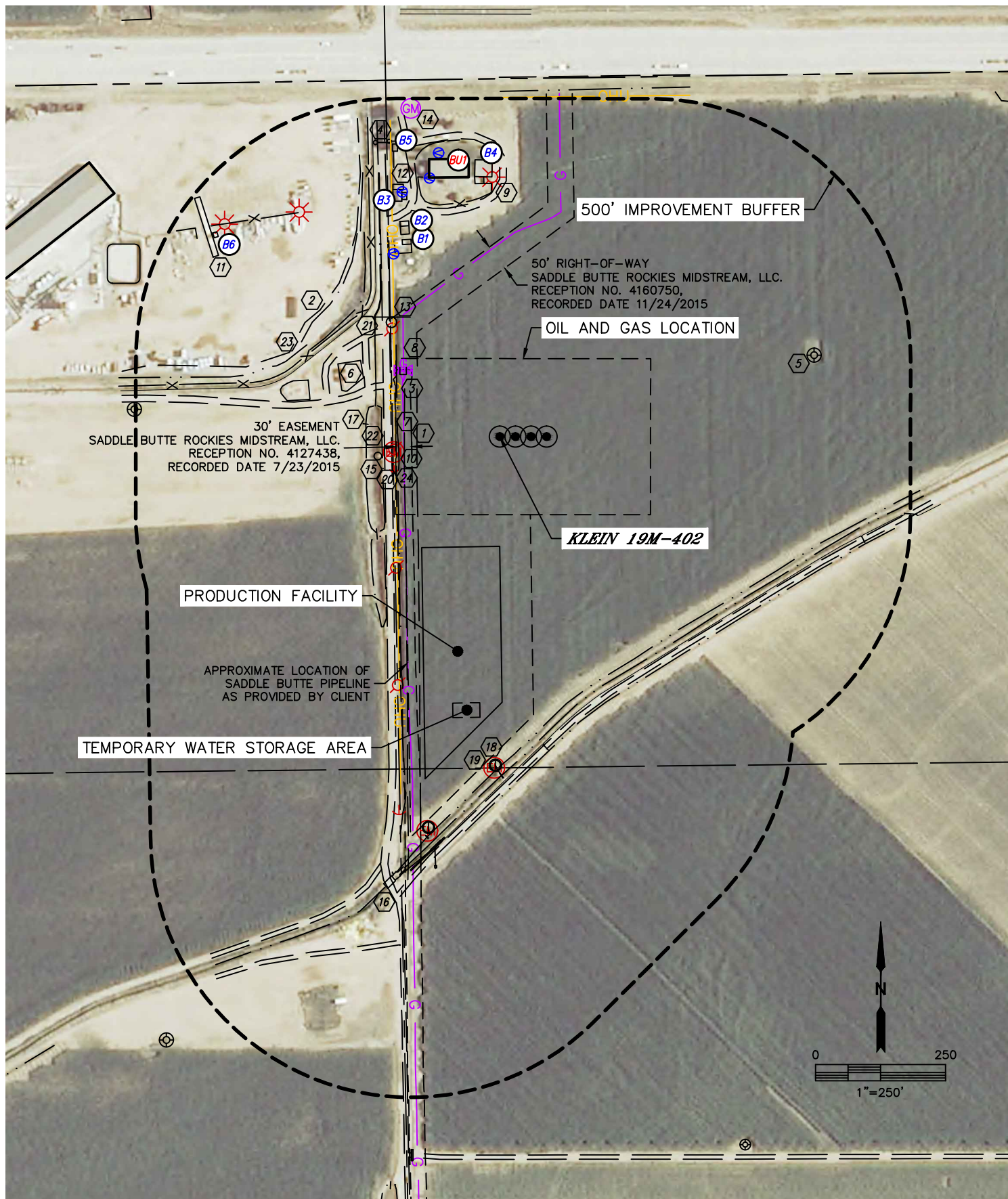


Lat40 , Inc. 6250 W. 10th Street, Unit 2 Greeley, CO 970-515-5294

# LOCATION DRAWING

KLEIN 19MN-HZ PAD

SECTION: 19  
TOWNSHIP: 5N  
RANGE: 64W





Lat40 , Inc. 6250 W. 10th Street, Unit 2 Greeley, CO 970-515-5294

## LOCATION DRAWING

KLEIN 19MN-HZ PAD

SECTION: 19  
TOWNSHIP: 5N  
RANGE: 64W

IMPROVEMENTS:  
(MEASURED FROM THE PROPOSED KLEIN 19M-402 WELL LOCATION)

- BU1 BUILDING UNIT BU1 500' N
- B1 BUILDING B1 408' NW, B2 441' NW, B3 490' NW, B4 502' N, B5 583' NW, B6 664' NW
- 1 ROAD 159' & 208' W, 242', 272', 303' & 460' NW, 437' N, 526' SE, 850' & 987' SW
- 2 EDGE OF GRAVEL 423' NW
- 3 FENCE 216', 359', 392', 427', 456', 556', 580' & 696' NW, 532' N
- 4 GATE 606' NW
- 5 EXISTING WELL HEAD 625' NE, 705' NW
- 6 EXISTING PRODUCTION EQUIPMENT (NOBLE) 286' & 372' NW
- 7 OVERHEAD UTILITY LINE 200' W, 652' N
- 8 GAS VALVE 225' NW
- 9 LIGHT POLE 499' N, 579' & 669' NW
- 10 ELECTRIC METER 206' & 771' SW, 639' S
- 11 TRUCK SCALE 644' NW
- 12 SPIGOT 406', 506', 515' & 558' NW
- 13 SIGN 310' NW
- 14 GAS METER 654' NW
- 15 CISTERN 238' SW
- 16 BRIDGE 870' SW
- 17 PIPE 251', 254' & 303' NW, 296', 782', 801', 802', 806' & 870' SW, 598' & 632' S, 722' & 791' SE
- 18 IRRIGATION WELL 632' S, 764' SW
- 19 CONCRETE IRRIGATION STRUCTURE 639' S, 834' & 848' SW
- 20 APPROXIMATE LOCATION SADDLE BUTTE PIPELINE 185' W
- 21 CONCRETE DITCH 350' NW, 523' SE
- 22 POND 227' W, 297' SW, 373' NW
- 23 LOW AREA 411' & 478' NW
- 24 DITCH 196' W, 246' NW, 499', 512' & 541' SE