



Lat40 , Inc. 6250 W. 10th Street, Unit 2 Greeley, CO 970-515-5294

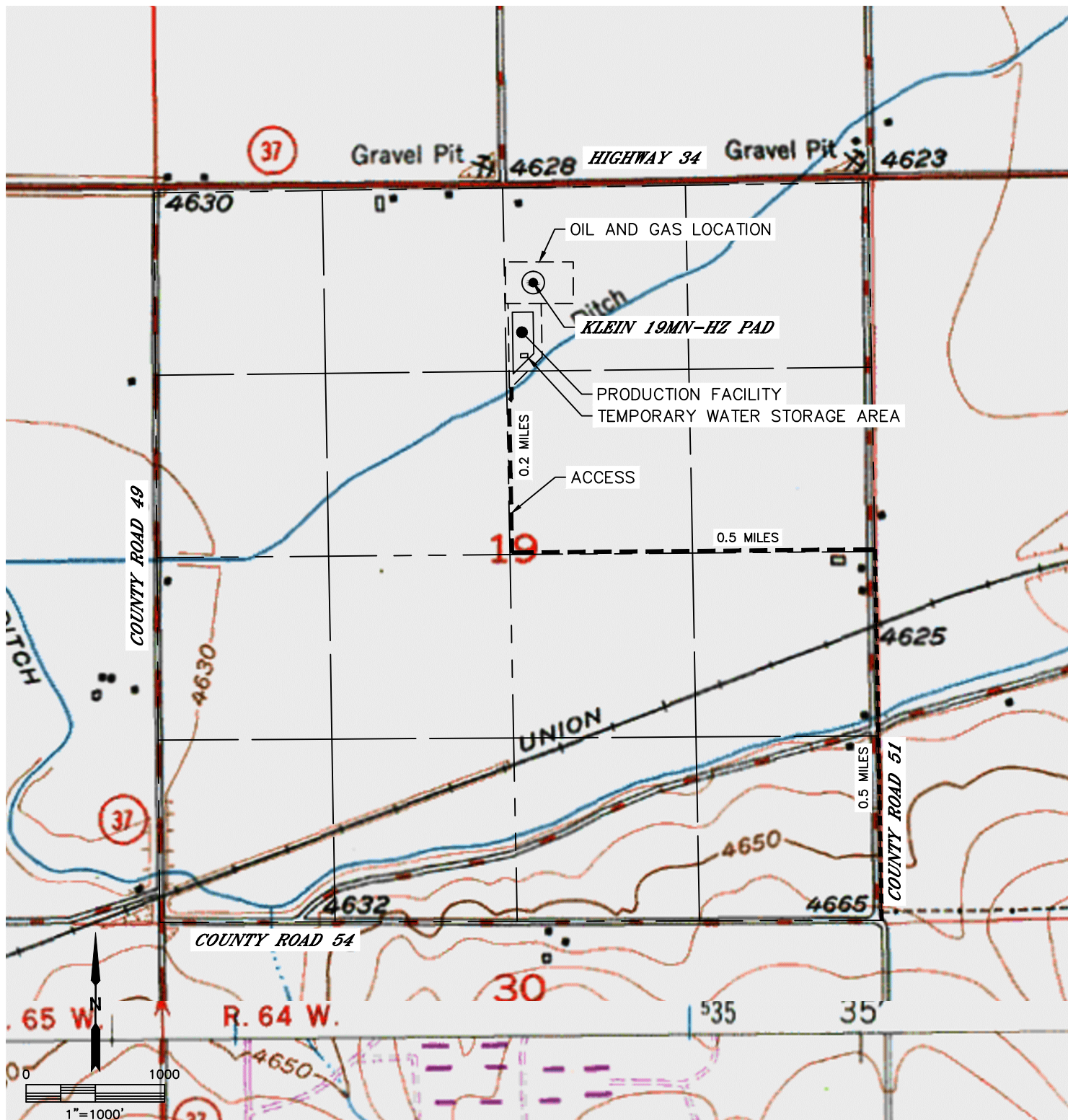
ACCESS ROAD MAP

KLEIN 19MN-HZ PAD

SECTION: 19
TOWNSHIP: 5N
RANGE: 64W

DRIVING DIRECTIONS TO KLEIN 19MN-HZ PAD

FROM THE INTERSECTION OF COUNTY ROAD 51 AND COUNTY ROAD 54, DRIVE NORTH ON COUNTY ROAD 51 FOR 0.5 MILES TO AN ACCESS ROAD TO THE WEST. DRIVE ON ACCESS ROAD TO THE WEST FOR 0.5 MILES THEN TURN NORTH AND CONTINUE FOR 0.2 MILES TO THE PROPOSED DRILL PAD AND PRODUCTION FACILITY.





Lat40 , Inc. 6250 W. 10th Street, Unit 2 Greeley, CO 970-515-5294

ACCESS ROAD MAP
KLEIN 19MN-HZ PAD

SECTION: 19
TOWNSHIP: 5N
RANGE: 64W

