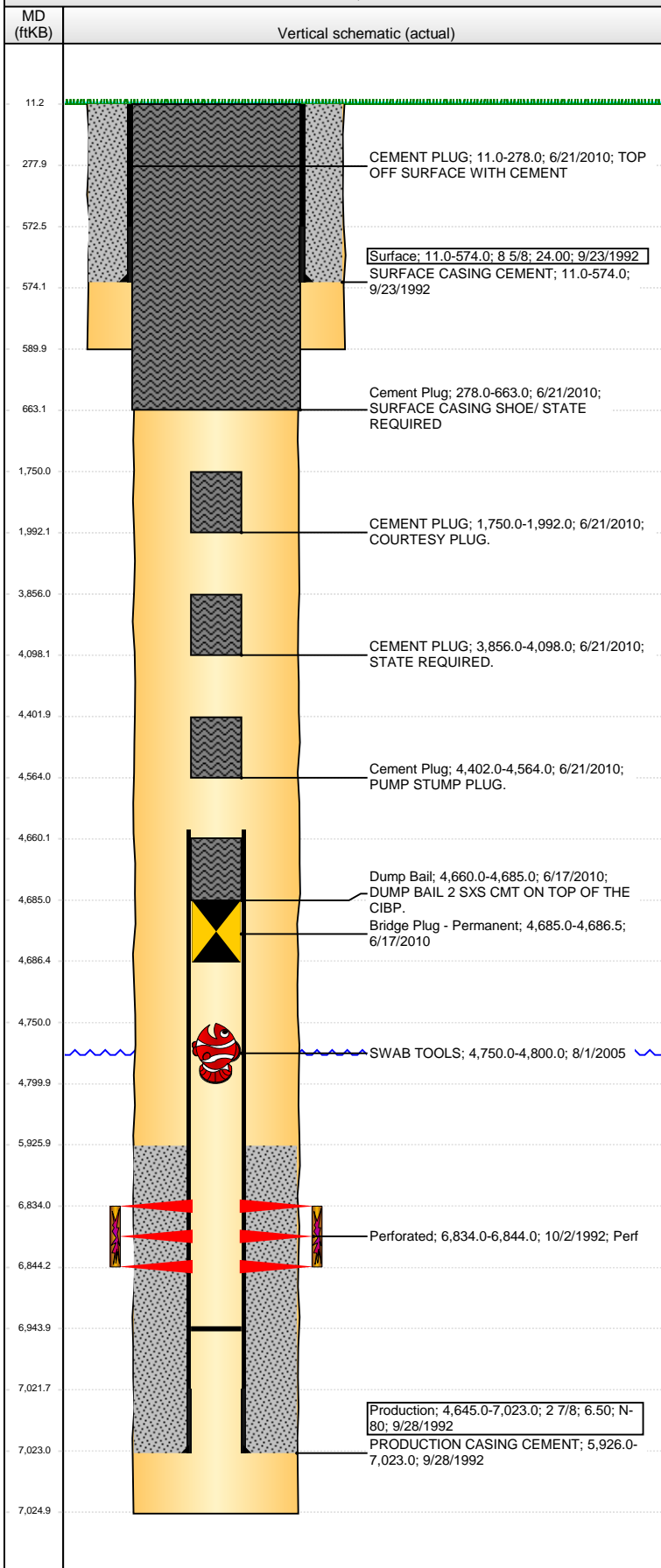


Well Name: KARCH BLUE D24-14

VERTICAL - ORIGINAL HOLE, 7/21/2016 11:54:47 AM



Well Header									
API 05-123-16171		Business Unit DJ BASIN		District 15		Well Config VERTICAL			
Original KB Elevation (ft) 4,776		KB - GL / MSL (ftKB) 11.00		Spud Date 9/22/1992		P & A Date 6/21/2010			
Comment SWAB TOOLS STUCK IN HOLE @ 4750'									
Directions To Well									
Congressional Location									
Quarter 1	Quarter 2	Quarter 3 SE	Quarter 4 SW	Section 24	Township 3	Twnshp N...	Range 64	Rng E/W Dir W	
Bottom Hole Location									
North-South Distance (ft)		From N or S Line		East-West Distance (ft)			From E or W Line		
Plug Back Total Depths									
Date	Depth (ftKB)	Method			Com				
9/28/1992	6,944.0	TAG							
Wellbore Sections									
Section Des		Size (in)		Act Top, MD (ftKB)			Act Btm, MD (ftKB)		
SURFACE		12 1/4		11			590		
PRODUCTION		7 7/8		590			7,025		
Zone Statuses									
Zone Name	Status Date	Status	Fluid Type	Job		Prod Method			
CODELL	11/2/1992	PR	Oil	DRILLING/CO...					
Casing Strings									
Surface, 574.0ftKB									
Casing Description Surface		Run Date 9/23/1992	OD (in) 8 5/8	Wt/Len (l... 24.00	Grade	Top, MD (ft... 11.0	MD (ftKB) 574.0		
Production, 7,023.0ftKB									
Casing Description Production		Run Date 9/28/1992	OD (in) 2 7/8	Wt/Len (l... 6.50	Grade N-80	Top, MD (ft... 11.0	MD (ftKB) 7,023.0		
Cement									
Description SURFACE CASING CEMENT				Top Depth (ftKB) 11.0		Bottom Depth (ftKB) 574.0			
Description PRODUCTION CASING CEMENT				Top Depth (ftKB) 5,926.0		Bottom Depth (ftKB) 7,023.0			
Description Dump Bail				Top Depth (ftKB) 4,660.0		Bottom Depth (ftKB) 4,685.0			
Description CEMENT PLUG				Top Depth (ftKB) 1,750.0		Bottom Depth (ftKB) 1,992.0			
Description CEMENT PLUG				Top Depth (ftKB) 3,856.0		Bottom Depth (ftKB) 4,098.0			
Description Cement Plug				Top Depth (ftKB) 4,402.0		Bottom Depth (ftKB) 4,564.0			
Description CEMENT PLUG				Top Depth (ftKB) 11.0		Bottom Depth (ftKB) 278.0			
Description Cement Plug				Top Depth (ftKB) 278.0		Bottom Depth (ftKB) 663.0			
Tubing Strings									
Tubing Description		Run Date	String...	ID (in)	Wt (lb/ft)	Grade	Len (ft)	Set De...	
Perforation Data									
Zone		Bnch/St g	Entered Shot Total	Top (ftKB)		Btm (ftKB)		Date	
CODELL, ORIGINAL HOLE			40	6,834.00		6,844.00		10/2/1992	
Stimulations & Treatments									
Date 10/7/1992	Zone CODELL, ORIGINAL HOLE			Primary Job Type DRILLING/COMPLETION - ORIGINAL					
Technical Result			Tech Result Details				Tech Result Note		
Comment									
Other In Hole									
Run Date	Des			OD (in)		Top (ftKB)		Btm (ftKB)	
8/1/2005	SWAB TOOLS			2.4		4,750.0		4,800.0	
6/17/2010	Bridge Plug - Permanent			2.4		4,685.0		4,686.5	
Logs									
Date		Type			Top, MD (ftKB)		Btm, MD (ftKB)		
9/27/1992		COMPENSATED DENSITY			4,000.0		6,975.0		
9/27/1992		INDUCTION			4,000.0		4,500.0		

Well Name: KARCH BLUE D24-14

VERTICAL - ORIGINAL HOLE, 7/21/2016 11:54:50 AM

Logs

