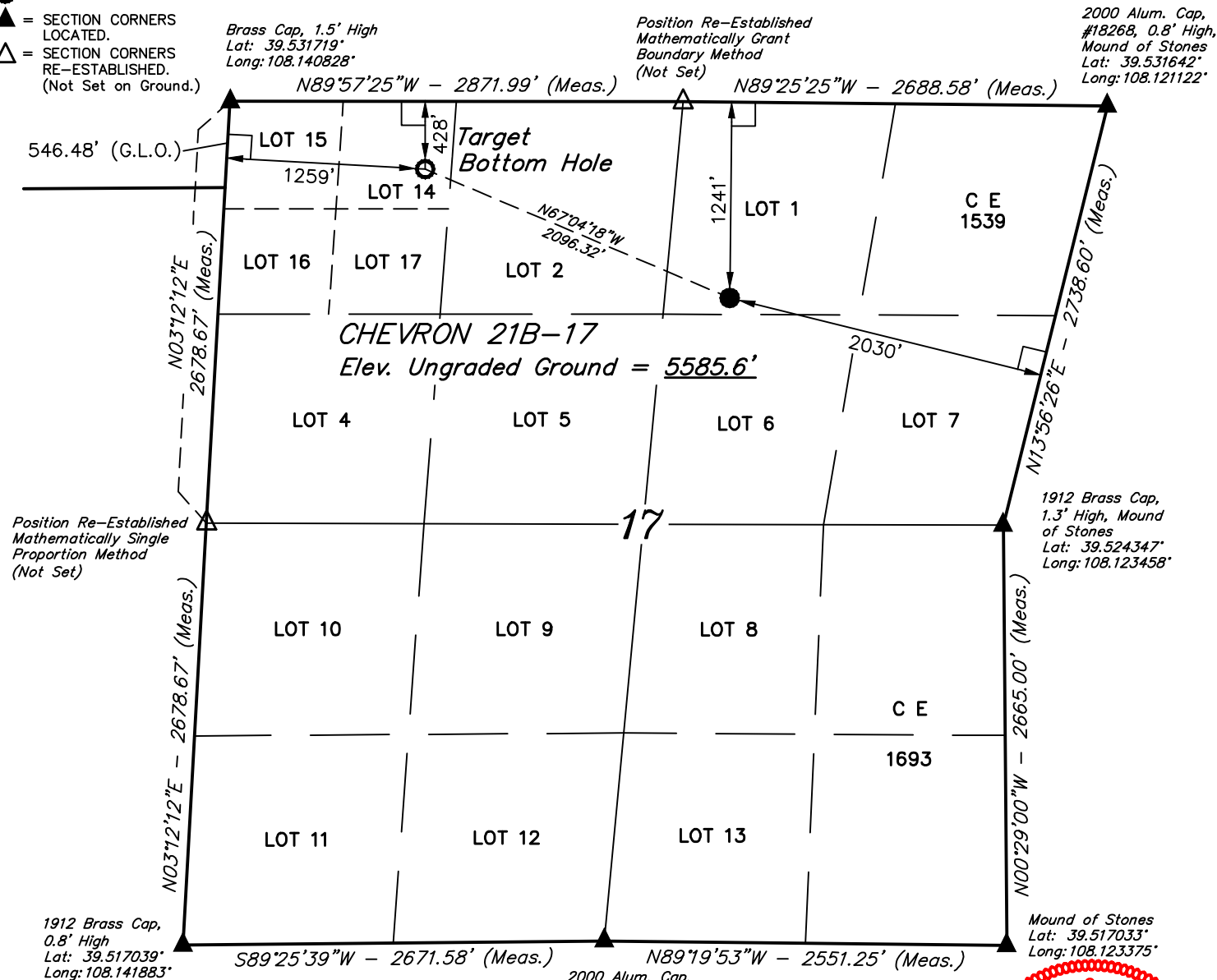


LEGEND:

- = 90° SYMBOL
 ● = PROPOSED WELLHEAD.
 ○ = TARGET BOTTOM HOLE.
 ▲ = SECTION CORNERS LOCATED.
 △ = SECTION CORNERS RE-ESTABLISHED.
 (Not Set on Ground.)

T6S, R96W, 6th P.M.



PDOP = 1.4



NAD 83 (TARGET BOTTOM HOLE)	NAD 83 (SURFACE LOCATION)
LATITUDE = 39°31'49.95\" (39.530542)	LATITUDE = 39°31'41.89\" (39.528303)
LONGITUDE = 108°08'11.21\" (108.136447)	LONGITUDE = 108°07'46.57\" (108.129603)
NAD 27 (TARGET BOTTOM HOLE)	NAD 27 (SURFACE LOCATION)
LATITUDE = 39°31'50.03\" (39.530564)	LATITUDE = 39°31'41.97\" (39.528325)
LONGITUDE = 108°08'08.92\" (108.135811)	LONGITUDE = 108°07'44.29\" (108.128969)
UTM NAD 27 (ZONE 12)	UTM NAD 27 (ZONE 12)
N: 14367969.10 E: 2448086.60	N: 14367214.83 E: 2450042.64

2000 Alum. Cap,
 #18268, 0.6' High
 Mound of Stones
 Lat: 39.517114°
 Long: 108.132417°

CERTIFICATE

THIS IS TO CERTIFY THAT THE ABOVE PLAT WAS PREPARED FROM FIELD
 NOTES OF ACTUAL SURVEYS MADE BY ME OR UNDER MY SUPERVISION
 AND THAT THE SAME ARE TRUE AND CORRECT TO THE BEST OF MY
 KNOWLEDGE AND BELIEF.

REGISTERED LAND SURVEYOR
 REGISTRATION NO. 38130
 STATE OF COLORADO

REV: 2 07-19-16 C.D.L. (SHL MOVE & BHL CHANGE)

BASIS OF BEARINGS
 BASIS OF BEARINGS IS A G.P.S. OBSERVATION

BASIS OF ELEVATION

SPOT ELEVATION AT THE NORTHWEST CORNER OF SECTION 30, T5S, R95W, 6th P.M.,
 TAKEN FROM THE FORKED GULCH, QUADRANGLE, COLORADO, GARFIELD COUNTY, 7.5
 MINUTE QUAD. (TOPOGRAPHIC MAP) PUBLISHED BY THE UNITED STATES DEPARTMENT
 OF THE INTERIOR, GEOLOGICAL SURVEY. SAID ELEVATION IS MARKED AS BEING 5966
 FEET.

Caerus Oil & Gas LLC

CHEVRON 21B-17
LOT 1, SECTION 17, T6S, R96W, 6th P.M.
GARFIELD COUNTY, COLORADO

SURVEYED BY: BRIAN BAKER, B.B.	DATE: 04-30-15
DRAWN BY: M.D.	DATE DRAWN: 10-06-15
SCALE: 1" = 1000'	

WELL LOCATION PLAT



UELS, LLC
 Corporate Office * 85 South 200 East
 Vernal, UT 84078 * (435) 789-1017

