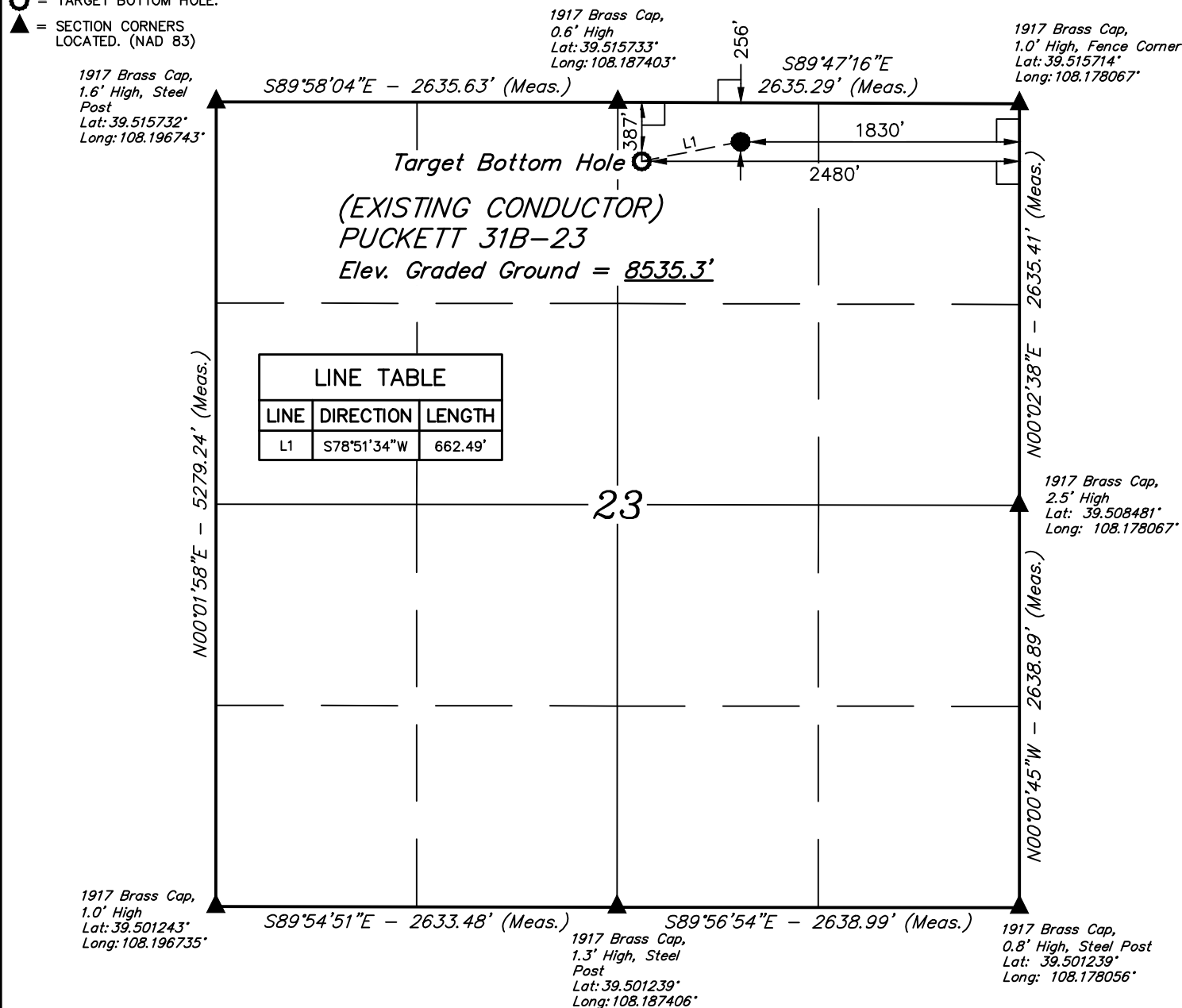


# LEGEND:

- 90° SYMBOL
- PROPOSED WELLHEAD.
- TARGET BOTTOM HOLE.
- SECTION CORNERS LOCATED. (NAD 83)

T6S, R97W, 6th P.M.



PDOP = 1.5



| NAD 83 (SURFACE LOCATION)              | NAD 83 (TARGET BOTTOM HOLE)            |
|--|--|
| LATITUDE = 39°30'54.09" (39.515025)    | LATITUDE = 39°30'52.82" (39.514672)    |
| LONGITUDE = 108°11'04.37" (108.184547) | LONGITUDE = 108°11'12.66" (108.186850) |
| NAD 27 (SURFACE LOCATION)              | NAD 27 (TARGET BOTTOM HOLE)            |
| LATITUDE = 39°30'54.17" (39.515047)    | LATITUDE = 39°30'52.90" (39.514694)    |
| LONGITUDE = 108°11'02.08" (108.183911) | LONGITUDE = 108°11'10.37" (108.186214) |
| UTM NAD 27 (ZONE 12)                   | UTM NAD 27 (ZONE 12)                   |
| N: 14361889.33 E: 2434697.60           | N: 14361740.51 E: 2434052.02           |

## BASIS OF BEARINGS

BASIS OF BEARINGS IS A G.P.S. OBSERVATION

## BASIS OF ELEVATION

SPOT ELEVATION AT THE NORTHWEST CORNER OF SECTION 30, T5S, R95W, 6th P.M., TAKEN FROM THE FORKED GULCH, QUADRANGLE, COLORADO, GARFIELD COUNTY, 7.5 MINUTE QUAD. (TOPOGRAPHIC MAP) PUBLISHED BY THE UNITED STATES DEPARTMENT OF THE INTERIOR, GEOLOGICAL SURVEY. SAID ELEVATION IS MARKED AS BEING 5966 FEET.

UELS, LLC

Corporate Office \* 85 South 200 East  
Vernal, UT 84078 \* (435) 789-1017



## CERTIFICATE

THIS IS TO CERTIFY THAT THE ABOVE PLAT WAS PREPARED FROM FIELD NOTES OF ACTUAL SURVEYS MADE BY ME OR UNDER MY SUPERVISION AND THAT THE SAME ARE TRUE AND CORRECT TO THE BEST OF MY KNOWLEDGE AND BELIEF.

REGISTERED LAND SURVEYOR  
REGISTRATION NO. 13130  
STATE OF COLORADO  
38130  
HAROLD MARSHALL

Caerus Oil & Gas LLC

PUCKETT 31B-23  
NW 1/4 NE 1/4, SECTION 23, T6S, R97W, 6th P.M.  
GARFIELD COUNTY, COLORADO

|             |                   |          |            |
|-------------|-------------------|----------|------------|
| SURVEYED BY | BRIAN BAKER, J.L. | 06-07-16 | SCALE      |
| DRAWN BY    | C.D.L.            | 06-09-16 | 1" = 1000' |

WELL LOCATION PLAT