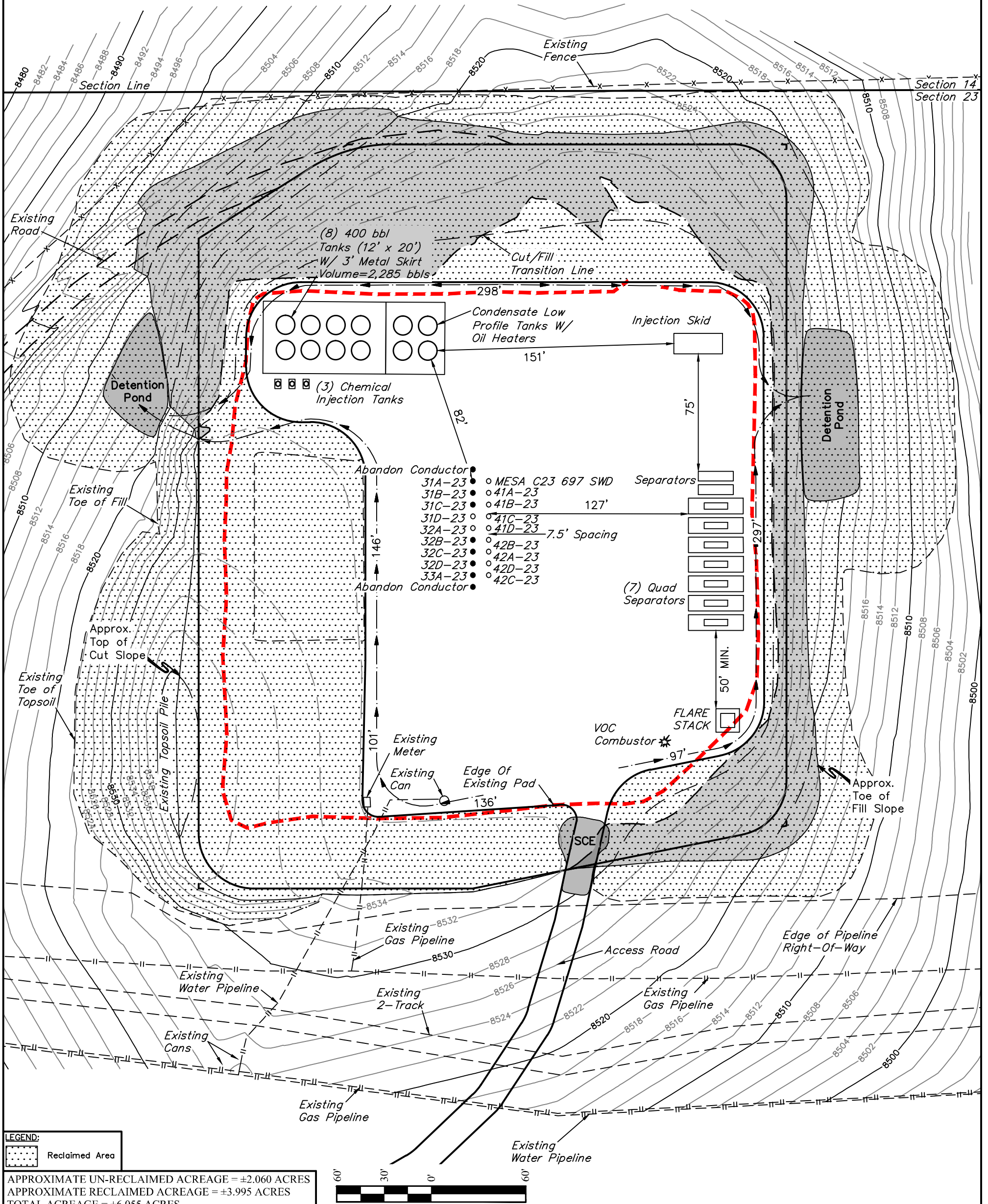


SWMP LEGEND:
SCE - STABILIZED
CONSTRUCTION
ENTRANCE
SL - SLASH
SedR - SEDIMENT
RESERVOIR
VB - VEGETATED BUFFER
W - WATTLE



Caerus Oil & Gas LLC

MESA C23-697
NW 1/4 NE 1/4, SECTION 23, T6S, R97W, 6th P.M.
GARFIELD COUNTY, COLORADO

SURVEYED BY	BRIAN BAKER, J.L.	06-07-16	SCALE
DRAWN BY	C.D.L.	06-09-16	1" = 60'
INTERIM RECLAMATION PLAN		FIGURE #4	



UELS, LLC
Corporate Office * 85 South 200 East
Vernal, UT 84078 * (435) 789-1017