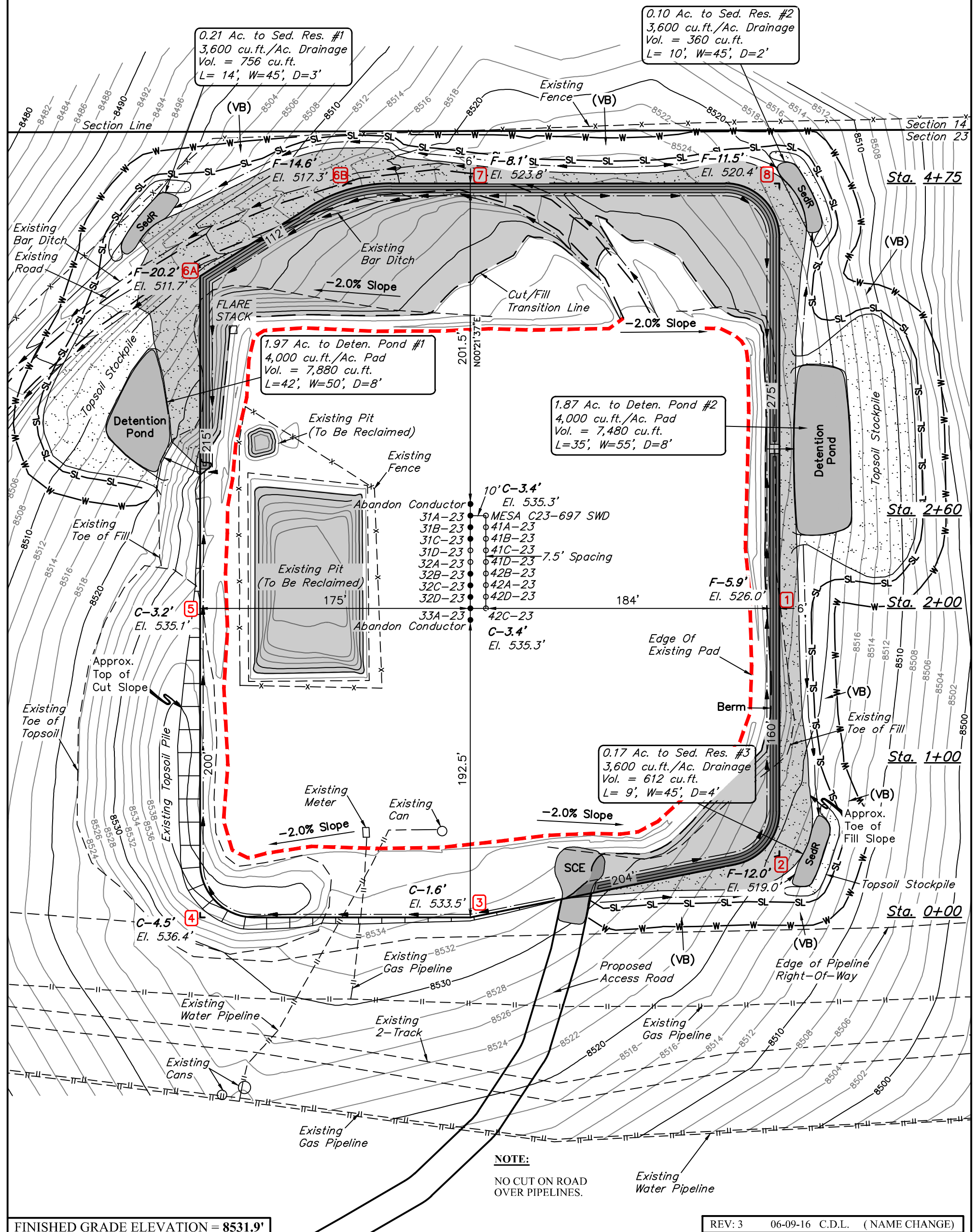
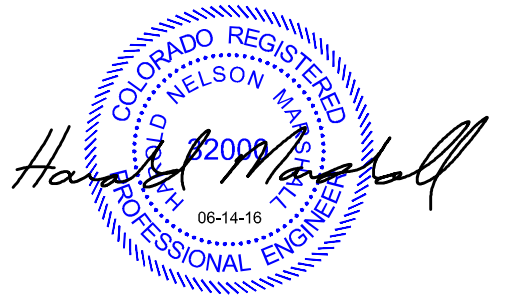


SWMP NOTE:
OWNER/OPERATOR IS RESPONSIBLE FOR
SWMP. BMP DETAILS TO BE PROVIDED BY
OTHERS. CONTACT ENGINEER FOR ANY
DESIGN CHANGES TO STRUCTURAL BMP'S.

SWMP LEGEND:
SCE - STABILIZED
CONSTRUCTION
ENTRANCE
SL - SLASH
SedR - SEDIMENT
RESERVOIR
VB - VEGETATED BUFFER
W - WATTLE



FINISHED GRADE ELEVATION = 8531.9'

REV: 3 06-09-16 C.D.L. (NAME CHANGE)

- NOTES:**
- Flare Stack is to be located a min. of 100' from the wellhead.
 - Round corners at 35' radius or as needed.
 - Construct diversion ditches as needed.
 - Contours shown at 2' intervals.
 - Cut/Fill slopes 1 1/2:1 (Typ.).



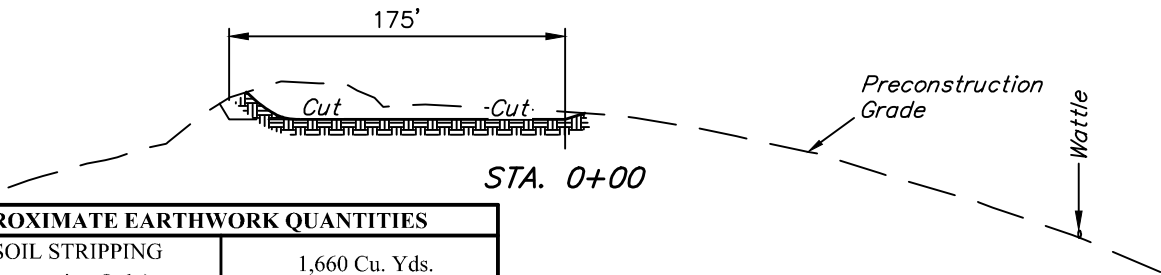
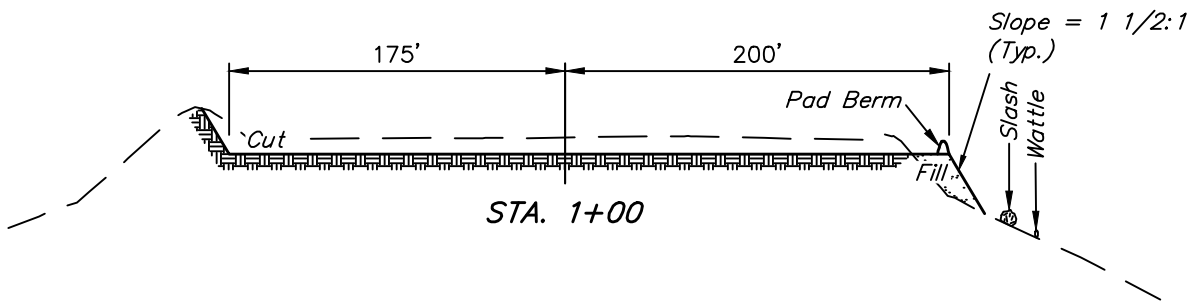
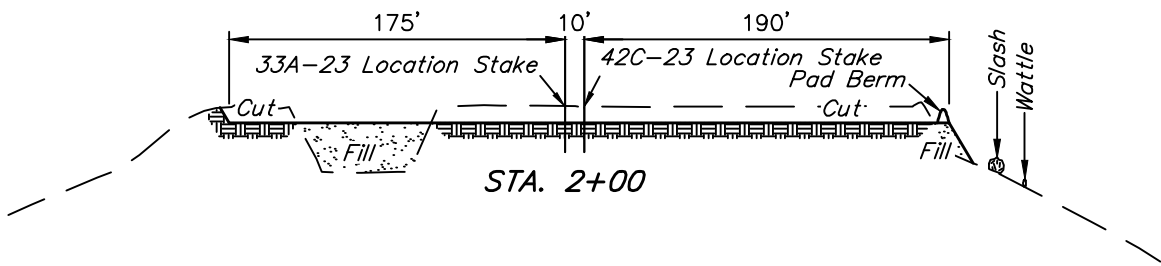
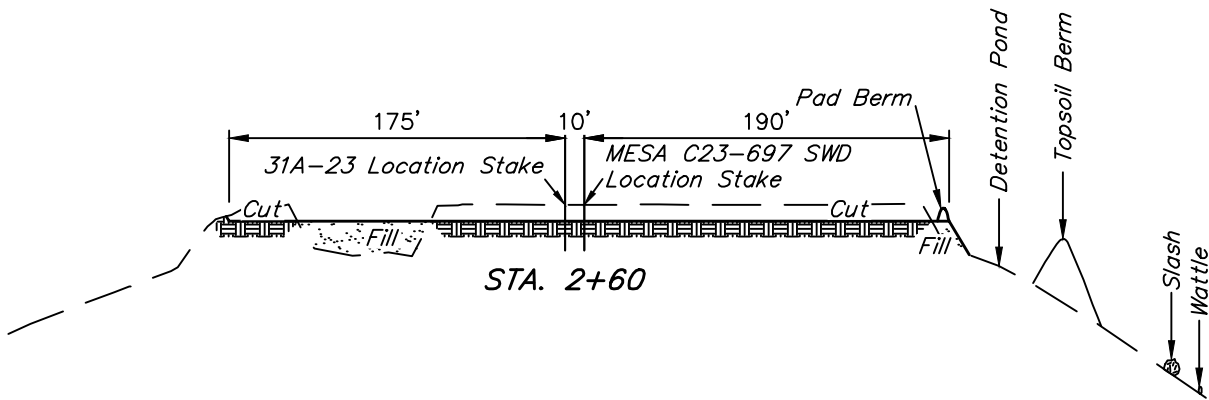
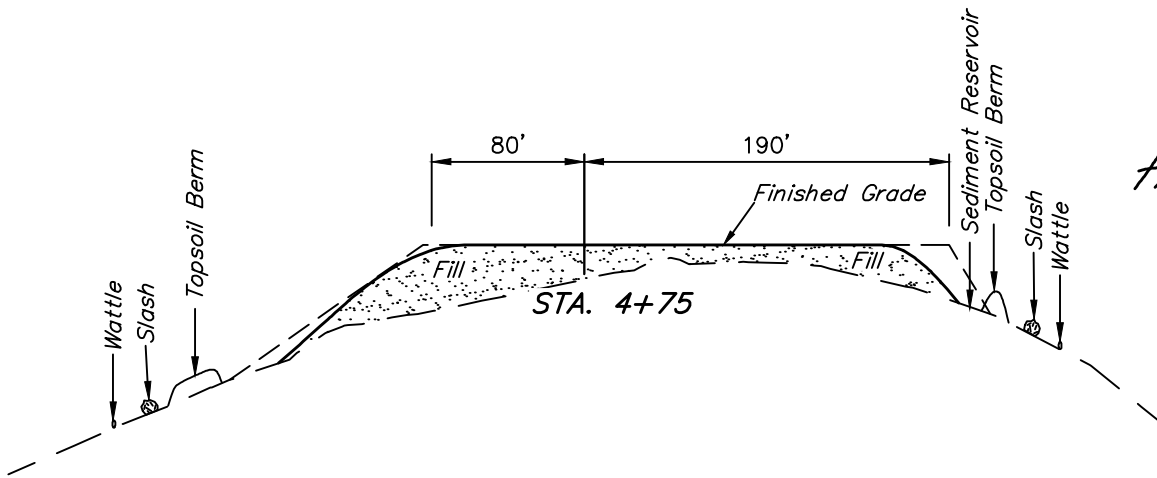
UELS, LLC
Corporate Office * 85 South 200 East
Vernal, UT 84078 * (435) 789-1017

Caerus Oil & Gas LLC

MESA C23-697
NW 1/4 NE 1/4, SECTION 23, T6S, R97W, 6th P.M.
GARFIELD COUNTY, COLORADO

SURVEYED BY	BRIAN BAKER, J.L.	06-07-16	SCALE
DRAWN BY	M.D.	05-16-16	1" = 60'
CONSTRUCTION LAYOUT		FIGURE #1	

1" = 40'
X-Section
Scale
1" = 100'



APPROXIMATE EARTHWORK QUANTITIES	
(6") TOPSOIL STRIPPING (New Construction Only)	1,660 Cu. Yds.
REMAINING LOCATION	13,970 Cu. Yds.
TOTAL CUT	15,630 Cu. Yds.
FILL	13,970 Cu. Yds.
EXCESS MATERIAL	1,660 Cu. Yds.
TOPSOIL	1,660 Cu. Yds.
EXCESS UNBALANCE (After Interim Rehabilitation)	0 Cu. Yds.

APPROXIMATE SURFACE DISTURBANCE AREAS		
	DISTANCE	ACRES
WELL SITE DISTURBANCE	NA	±6.055
30' WIDE ACCESS ROAD R-O-W DISTURBANCE	1004'	±0.691
TOTAL SURFACE USE AREA		±6.746

REV: 3 06-09-16 C.D.L. (NAME CHANGE)

- NOTES:**
- Fill quantity includes 5% for compaction.
 - Calculations based on 6" of topsoil stripping.
 - Cut/Fill slopes 1 1/2:1 (Typ.).

Caerus Oil & Gas LLC

MESA C23-697
NW 1/4 NE 1/4, SECTION 23, T6S, R97W, 6th P.M.
GARFIELD COUNTY, COLORADO

SURVEYED BY	BRIAN BAKER, J.L.	06-07-16	SCALE
DRAWN BY	M.D.	05-16-16	AS SHOWN
CONSTRUCTION LAYOUT CROSS SECTIONS			FIGURE #2



UELS, LLC
Corporate Office * 85 South 200 East
Vernal, UT 84078 * (435) 789-1017