



# Kerr-McGee Oil & Gas Onshore LP

A subsidiary of Anadarko Petroleum Corporation

1099 18<sup>th</sup> Street  
Denver, CO 80202  
720-929-6000

July 8, 2016

Matt Lepore  
Director, Colorado Oil and Gas Conservation Commission  
Department of Natural Resources  
The Chancery Building  
1120 Lincoln Street, Suite 801  
Denver, CO 80203

Re: **30 Day Certification Letter - 318A.e**  
FOLLEY SOUTH #3 (Doc #401059350)  
Township 5 North, Range 68 West  
Section 23: SE/4SW/4  
Unit Acreage: 560  
Unit Spacing: 05N-68W-Sec 23 NE/4; E/2NW/4  
05N-68W-Sec 24 N/2  
Weld County, Colorado

Dear Director Lepore:

Kerr-McGee Oil and Gas Onshore LP ("KMG") hereby certifies that a thirty (30) day notice has been given by certified mail to all mineral owners in the proposed wellbore spacing unit. We have not received any objections to such well location, proposed spacing unit, or additional producing formation. KMG hereby respectfully requests approval of this boundary well.

If you have any questions or issues regarding this permit, please contact Cheryl Light at (720) 929-6461.

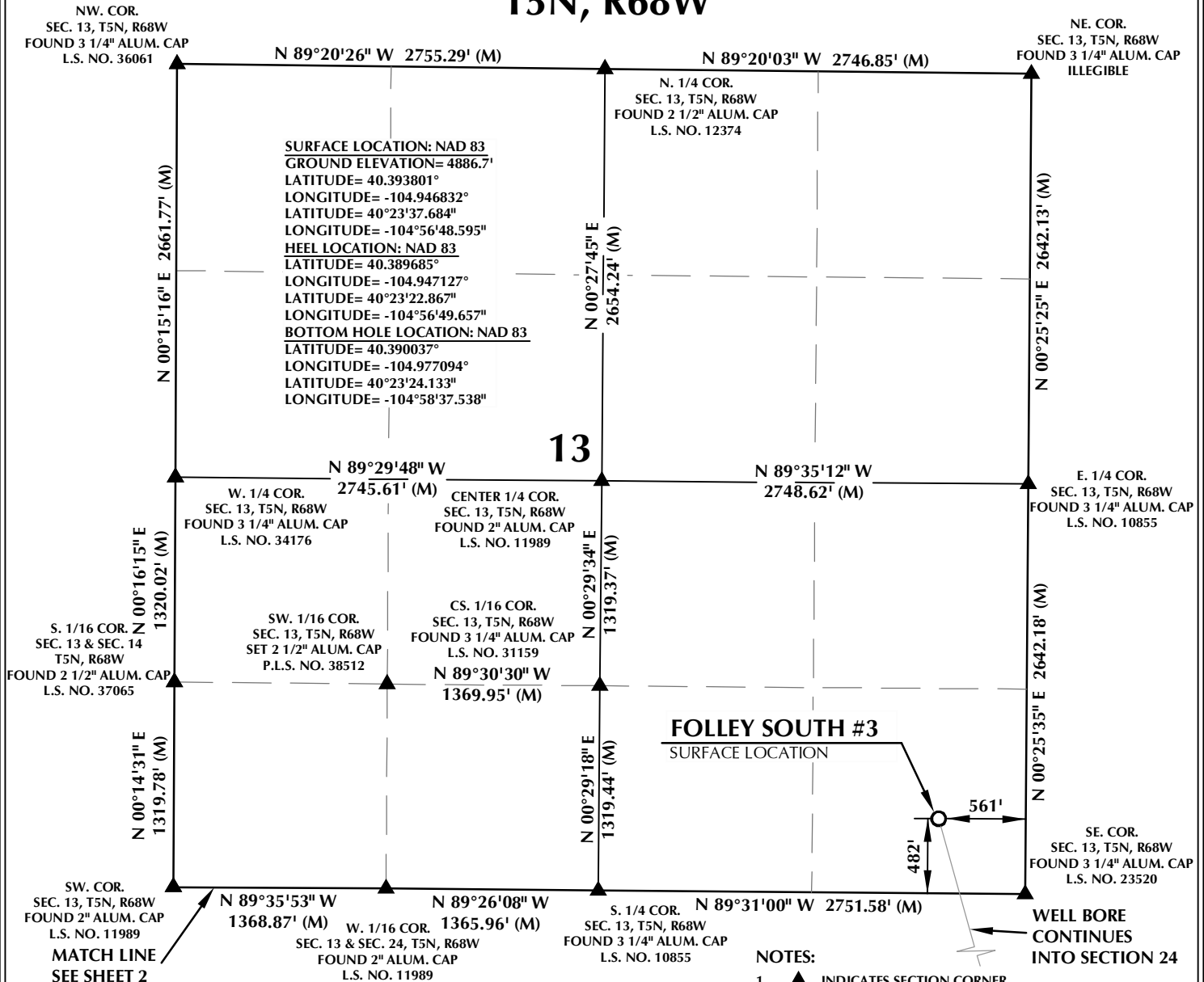
Very truly yours,

**KERR-McGEE OIL AND GAS ONSHORE LP**

A handwritten signature in blue ink that reads 'Cheryl Light'.

Cheryl Light  
Senior Regulatory Analyst

T5N, R68W

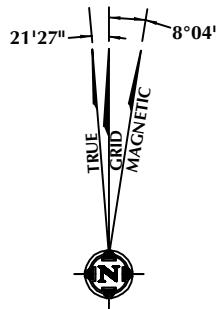


## CERTIFICATE OF SURVEYOR:

THIS IS TO CERTIFY THAT THE ABOVE PLAT WAS PREPARED FROM FIELD NOTES OF ACTUAL SURVEY MADE BY ME OR UNDER MY SUPERVISION AND THAT THE SAME ARE TRUE AND CORRECT TO THE BEST OF MY KNOWLEDGE AND BELIEF. THIS CERTIFICATE DOES NOT REPRESENT A LAND SURVEY PLAT OR IMPROVEMENT SURVEY PLAT AS DEFINED BY C.R.S. 38-51-302 AND CANNOT BE RELIED UPON TO DETERMINE OWNERSHIP.

*Randall K. French*  
 RANDALL K. FRENCH  
 PROFESSIONAL LAND SURVEYOR  
 COLORADO REGISTRATION NUMBER 38512

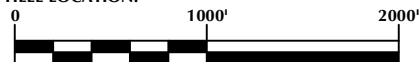
NOTICE:  
 ACCORDING TO COLORADO STATE LAW YOU MUST COMMENCE ANY LEGAL ACTION BASED UPON ANY DEFECT IN THIS SURVEY WITHIN THREE YEARS AFTER YOU FIRST DISCOVER SUCH DEFECT. IN NO EVENT MAY ANY ACTION BASED UPON ANY DEFECT IN THIS SURVEY BE COMMENCED MORE THAN TEN YEARS FROM THE DATE ON THE CERTIFICATION SHOWN HEREON.



NOTE:  
 MAGNETIC NORTH IS CURRENT AS OF 5/12/2016.  
 MAGNETIC NORTH CHANGES WEST 0°06' PER YEAR.

## NOTES:

- ▲ INDICATES SECTION CORNER
- INDICATES CALCULATED CORNER
- ELEVATION BASED ON NAVD88 (GEOID12B)
- BASIS OF BEARING DERIVED FROM COLORADO COORDINATE SYSTEM OF 1983 NORTH ZONE.
- ALL MEASURED DISTANCES ARE GRID.
- COMBINED SCALE FACTOR: .99972770 CALCULATED FROM THE N. 1/4 CORNER OF SECTION 13, T5N, R68W
- OPERATOR: ROB WILSON / PDOP = 1.3
- SEE ADDENDUM TO WELL LOCATION CERTIFICATE FOR EXISTING IMPROVEMENTS WITHIN 500' OF THE WELL PAD.
- WELL FOOTAGES ARE MEASURED AT RIGHT ANGLES TO THE SECTION LINES.
- THE BOTTOM OF HOLE BEARS N89°28'04"W, 8348' FROM THE HEEL LOCATION.



SCALE: 1" = 1000'

## WELL PAD - FOLLEY SOUTH #3

FOLLEY SOUTH #3  
 WELL LOCATION CERTIFICATE  
 482' FSL & 561' FEL SESE (SURFACE)  
 LOCATED IN SECTION 13  
 1019' FNL & 624' FEL NENE (HEEL)  
 LOCATED IN SECTION 24  
 942' FNL & 1784' FWL NENW (BOTTOM)  
 LOCATED IN SECTION 23  
 T5N, R68W, 6TH P.M.  
 LARIMER COUNTY, COLORADO

**Kerr-McGee Oil &  
 Gas Onshore L.P.**  
 1099 18th Street  
 Denver, Colorado 80202



## CONSULTING, LLC

SHERIDAN OFFICE  
 1095 Saberton Avenue  
 Sheridan, Wyoming 82801  
 Phone 307-674-0609

LOVELAND OFFICE  
 1635 Foxtrail Drive, Suite 204  
 Loveland, Colorado 80538  
 Phone 970-776-4331

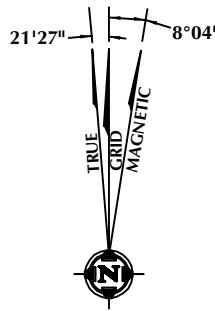
DRAFTED BY:	LMO	CHECKED BY:	RKF	SHEET NO:
DATE DRAFTED:	5/23/16	DATE SURVEYED:	5/12/16	1
REVISED:	7/8/16	FILE NAME:	16-47	1 OF 3



THIS IS TO CERTIFY THAT THE ABOVE PLAT WAS PREPARED FROM FIELD NOTES OF ACTUAL SURVEY MADE BY ME OR UNDER MY SUPERVISION AND THAT THE SAME ARE TRUE AND CORRECT TO THE BEST OF MY KNOWLEDGE AND BELIEF. THIS CERTIFICATE DOES NOT REPRESENT A LAND SURVEY PLAT OR IMPROVEMENT SURVEY PLAT AS DEFINED BY C.R.S. 38-51-102 AND CANNOT BE RELIED UPON TO DETERMINE OWNERSHIP.



*Randall K. French*  
 RANDALL K. FRENCH  
 PROFESSIONAL LAND SURVEYOR  
 COLORADO REGISTRATION NUMBER 38512

**NOTICE:** ACCORDING TO COLORADO STATE LAW YOU MUST COMMENCE ANY LEGAL ACTION BASED UPON ANY DEFECT IN THIS SURVEY WITHIN THREE YEARS AFTER YOU FIRST DISCOVER SUCH DEFECT. IN NO EVENT MAY ANY ACTION BASED UPON ANY DEFECT IN THIS SURVEY BE COMMENCED MORE THAN TEN YEARS FROM THE DATE ON THE CERTIFICATION SHOWN HEREON.



NOTE:  
MAGNETIC NORTH IS CURRENT AS OF 5/12/2016.  
MAGNETIC NORTH CHANGES WEST 0°06' PER YEAR.

**NOTES:**

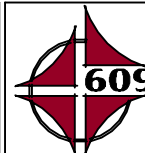
1.  INDICATES SECTION CORNER
2.  INDICATES CALCULATED CORNER
3. ELEVATION BASED ON NAVD88 (GEOID12B)
4. BASIS OF BEARING DERIVED FROM COLORADO COORDINATE SYSTEM OF 1983 NORTH ZONE.
5. ALL MEASURED DISTANCES ARE GRID.  
COMBINED SCALE FACTOR: .99972770 CALCULATED FROM THE N. 1/4 CORNER OF SECTION 13, T5N, R68W
6. OPERATOR: ROB WILSON / PDOP = 1.3
7. SEE ADDENDUM TO WELL LOCATION CERTIFICATE FOR EXISTING IMPROVEMENTS WITHIN 500' OF THE WELL PAD.
8. WELL FOOTAGES ARE MEASURED AT RIGHT ANGLES TO THE SECTION LINES.
9. THE BOTTOM OF HOLE BEARS N89°28'04"W, 8348' FROM THE HEEL LOCATION.

0 1000' 2000'

SCALE: 1" = 1000'

**FOLLEY SOUTH #3**  
**WELL LOCATION CERTIFICATE**  
**482' FSL & 561' FEL SESE (SURFACE)**  
**LOCATED IN SECTION 13**  
**1019' FNL & 624' FEL NENE (HEEL)**  
**LOCATED IN SECTION 24**  
**942' FNL & 1784' FWL NENW (BOTTOM)**  
**LOCATED IN SECTION 23**  
**T5N, R68W, 6TH P.M.**  
**LARIMER COUNTY, COLORADO**

**Kerr-McGee Oil &  
Gas Onshore L.P.**  
1099 18th Street  
Denver, Colorado 80202



CONSULTING, LLC

**SHERIDAN OFFICE**  
1095 Saberton Avenue  
Sheridan, Wyoming 82801  
Phone 307-674-0609

**LOVELAND OFFICE**  
1635 Foxtrail Drive, Suite 204  
Loveland, Colorado 80538  
Phone 970-776-4331

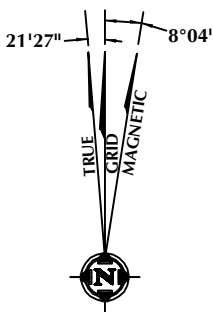
DRAFTED BY: LMO		CHECKED BY: RKF	SHEET NO: <b>2</b> 2 OF 3
DATE DRAFTED: 5/23/16		DATE SURVEYED: 5/12/16	
REVISED: 7/8/16		FILE NAME: 16-47	

THIS IS TO CERTIFY THAT THE ABOVE PLAT WAS PREPARED FROM FIELD NOTES OF ACTUAL SURVEY MADE BY ME OR UNDER MY SUPERVISION AND THAT THESE ARE TRUE AND CORRECT TO THE BEST OF MY KNOWLEDGE AND BELIEF. THIS CERTIFICATE DOES NOT REPRESENT A LAND SURVEY PLAT OR IMPROVEMENT SURVEY PLAT AS DEFINED BY C.F.S. 38-51-102 AND CANNOT BE RELIED UPON TO DETERMINE OWNERSHIP.

*Randall K. French*  
 RANDALL K. FRENCH  
 PROFESSIONAL LAND SURVEYOR  
 COLORADO REGISTRATION NUMBER 38512  
 7/8/16

**NOTICE:** ACCORDING TO COLORADO STATE LAW YOU MUST COMMENCE ANY LEGAL ACTION BASED UPON ANY DEFECT IN THIS SURVEY WITHIN THREE YEARS AFTER YOU FIRST DISCOVER SUCH DEFECT. IN NO EVENT MAY ANY ACTION BASED UPON ANY DEFECT IN THIS SURVEY BE COMMENCED MORE THAN TEN YEARS FROM THE DATE ON THE CERTIFICATION SHOWN HEREON.

**NOTE:**  
MAGNETIC NORTH IS CURRENT AS OF 5/12/2016.  
MAGNETIC NORTH CHANGES WEST 0°06' PER YEAR.



1. ▲ INDICATES SECTION CORNER
2. ● INDICATES CALCULATED CORNER
3. ELEVATION BASED ON NAVD88 (GEOID12B)
4. BASIS OF BEARING DERIVED FROM COLORADO COORDINATE SYSTEM OF 1983 NORTH ZONE.
5. ALL MEASURED DISTANCES ARE GRID.
6. COMBINED SCALE FACTOR: .99972770 CALCULATED FROM THE N. 1/4 CORNER OF SECTION 13, T5N, R68W
7. OPERATOR: ROB WILSON / PDOP = 1.3
8. SEE ADDENDUM TO WELL LOCATION CERTIFICATE FOR EXISTING IMPROVEMENTS WITHIN 500' OF THE WELL PAD.
9. WELL FOOTAGES ARE MEASURED AT RIGHT ANGLES TO THE SECTION LINES.
9. THE BOTTOM OF HOLE BEARS N89°28'04"W, 8348' FROM THE HEEL LOCATION.

0 1000' 2000'

SCALE: 1" = 1000'

**FOLLEY SOUTH #3**  
**WELL LOCATION CERTIFICATE**  
**482' FSL & 561' FEL SESE (SURFACE)**  
**LOCATED IN SECTION 13**  
**1019' FNL & 624' FEL NENE (HEEL)**  
**LOCATED IN SECTION 24**  
**942' FNL & 1784' FWL NENW (BOTTOM)**  
**LOCATED IN SECTION 23**  
**T5N, R68W, 6TH P.M.**  
**LARIMER COUNTY, COLORADO**

**Kerr-McGee Oil &  
Gas Onshore L.P.**  
1099 18th Street  
Denver, Colorado 80202



**SHERIDAN OFFICE**  
1095 Saberton Avenue  
Sheridan, Wyoming 82801  
Phone 307-674-0609

**LOVELAND OFFICE**  
1635 Foxtrail Drive, Suite 204  
Loveland, Colorado 80538  
Phone 970-776-4331

DRAFTED BY: LMO	CHECKED BY: RKF	SHEET NO: <b>3</b> 3 OF 3
DATE DRAFTED: 5/23/16	DATE SURVEYED: 5/12/16	
REVISED: 7/8/16	FILE NAME: 16-47	