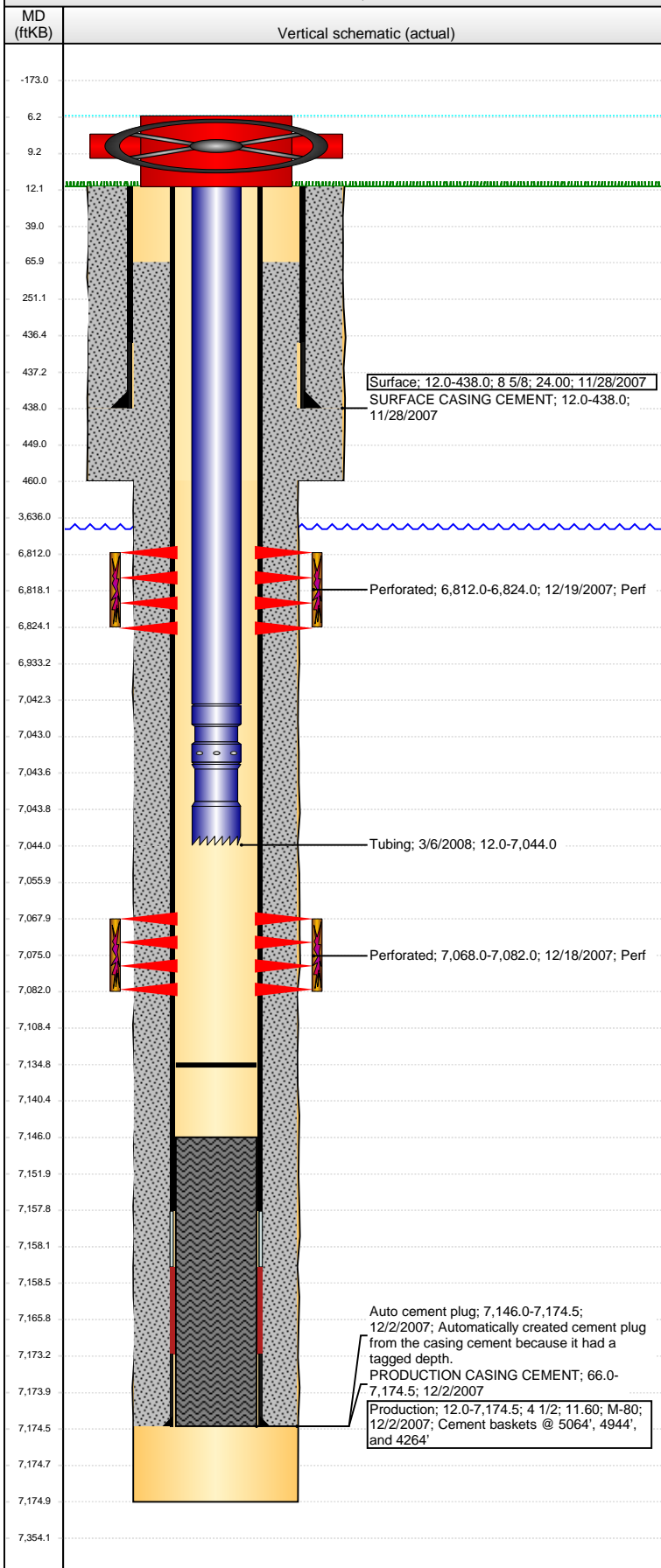


Well Name: FOSS 14-44

VERTICAL - ORIGINAL HOLE, 7/12/2016 2:23:32 PM



Well Header

API 05-123-26499	Business Unit DJ BASIN	District 15	Well Config VERTICAL
Original KB Elevation (ft) 4,679	KB - GL / MSL (ftKB) 12.00	Spud Date 11/27/2007	P & A Date

Comment

DISCREPANCY: DR/ST RPT TD 7159; PROD CSG LANDED @ 7175

Directions To Well

392/59, NORTH 50', WEST 1/10 PARALLEL TO 392 TO WEST SIDE OF HOUSE, NORTH 1/10 INTO

Congressional Location

Quarter 1	Quarter 2	Quarter 3	Quarter 4	Section	Township	Twnshp N...	Range	Rng E/W Dir
		SE	SE	14	6	N	64	W

Bottom Hole Location

North-South Distance (ft)	From N or S Line	East-West Distance (ft)	From E or W Line
---------------------------	------------------	-------------------------	------------------

Plug Back Total Depths

Date	Depth (ftKB)	Method	Com
12/2/2007	7,038.8	TAG	FLOAT SHOE W/ BAFFLE
12/13/2007	7,146.0	CASED HOLE LOG	DEPTH LOGGER ON CBL
3/6/2008	7,135.0	TAG	CLEAN OUT TO LAND TUBING

Wellbore Sections

Section Des	Size (in)	Act Top, MD (ftKB)	Act Btm, MD (ftKB)
SURFACE	12 1/4	12	460
PRODUCTION	7 7/8	460	7,175

Zone Statuses

Zone Name	Status Date	Status	Fluid Type	Job	Prod Method
NIOBRARA	1/2/2008	PR		DRILLING/CO...	
NIOBRARA	3/19/2015	SI		HORIZONTAL...	
CODELL	1/2/2008	PR		DRILLING/CO...	
CODELL	3/19/2015	SI		HORIZONTAL...	

Casing Strings

Surface, 438.0ftKB

Casing Description	Run Date	OD (in)	Wt/Len (l...)	Grade	Top, MD (ft...)	MD (ftKB)
Surface	11/28/2007	8 5/8	24.00		12.0	438.0

Production, 7,174.5ftKB

Casing Description	Run Date	OD (in)	Wt/Len (l...)	Grade	Top, MD (ft...)	MD (ftKB)
Production	12/2/2007	4 1/2	11.60	M-80	12.0	7,174.5

Cement

Description	Top Depth (ftKB)	Bottom Depth (ftKB)
SURFACE CASING CEMENT	12.0	438.0
Description	Top Depth (ftKB)	Bottom Depth (ftKB)
PRODUCTION CASING CEMENT	66.0	7,174.5

Tubing Strings

Tubing Description	Run Date	String...	ID (in)	Wt (lb/ft)	Grade	Len (ft)	Set De...
Tubing	3/6/2008	2 3/8				7,032.00	

Tubing Components

Item Des	OD (in)	Wt (lb/ft)	Grade	Jts	Len (ft)	Btm (ftKB)	Btm (TVD) (ftKB)
Tubing	2 3/8			226	7,030.40	7,042.4	
Seal Nipple	2 3/8			1	1.10	7,043.5	
Notched collar	2 3/8			1	0.50	7,044.0	

Perforation Data

Zone	Bnch/St g	Entered Shot Total	Top (ftKB)	Btm (ftKB)	Date
NIOBRARA, ORIGINAL HOLE	B	48	6,812.00	6,824.00	12/19/2007
CODELL, ORIGINAL HOLE		56	7,068.00	7,082.00	12/18/2007

Stimulations & Treatments

Date	Zone	Primary Job Type
12/19/2007	NIOBRARA, ORIGINAL HOLE	DRILLING/COMPLETION - ORIGINAL
Technical Result	Tech Result Details	Tech Result Note

Comment

Well Name: FOSS 14-44

VERTICAL - ORIGINAL HOLE, 7/12/2016 2:23:35 PM

Stimulations & Treatments

Date 12/19/2007	Zone CODELL, ORIGINAL HOLE	Primary Job Type DRILLING/COMPLETION - ORIGINAL
Technical Result	Tech Result Details	Tech Result Note
Comment		

Other In Hole

Run Date	Des	OD (in)	Top (ftKB)	Btm (ftKB)

Logs

Date	Type	Top, MD (ftKB)	Btm, MD (ftKB)
12/1/2007	COMPENSATED DENSITY	3,400.0	7,006.0
12/1/2007	INDUCTION	3,400.0	7,028.0
12/13/2007	CBL/CCL/GR	50.0	7,144.0
4/15/2015	GYRO	12.0	7,000.0

