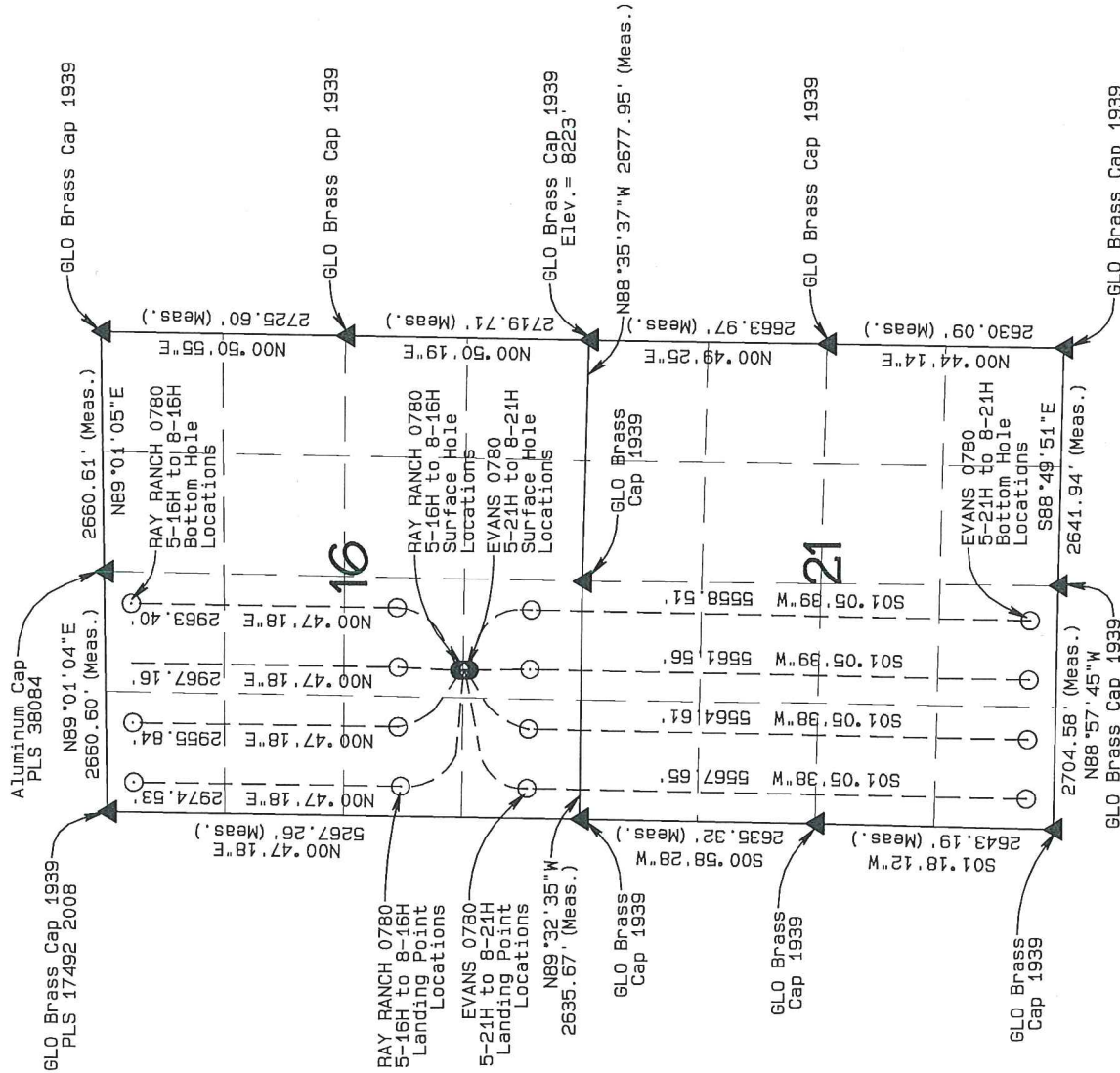


T7N, R80W, 6th P.M.

SandRidge Exploration & Production, LLC



LEGEND

- ▲ FOUND CORNER
- PROPOSED WELL
- PROPOSED BHL/LPL

Multi-Well Plan

RAY RANCH 0780 S16 PAD
Sections 16 and 21, T7N, R80W, 6th P.M.,
Jackson County, Colorado.

BASIS OF BEARINGS:

US STATE PLANE 1983
CO NORTH 0501 GRID

BASIS OF ELEVATION

SPOT ELEVATION AT THE NE CORNER OF SECTION 21,
T7N, R80W, 6TH PM, TAKEN FROM THE COALMONT
QUADRANGLE, USGS 7.5 MIN QUAD (TOPOGRAPHIC MAP)
WITH SAID ELEVATION MARKED AS BEING 8223 FEET.

SURFACE USE

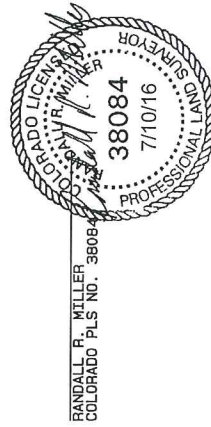
AGRICULTURAL/GRAZING

GRAPHIC SCALE 1"=2000'



2000 0 2000

THIS IS TO CERTIFY THAT THE ABOVE PLAT WAS PREPARED FROM
FIELD NOTES OF ACTUAL SURVEYS MADE BY ME OR UNDER MY
SUPERVISION AND THAT THE SAME ARE TRUE AND CORRECT TO THE
BEST OF MY KNOWLEDGE AND BELIEF.



NORTH PARK ENGINEERING &
CONSULTING, INC.

P.O. BOX 395
WALDEN, CO 80480
(970) 723-3725

DATE OF FIELD WORK: JUNE 16, 2016 DRAWING COMPLETION: JULY 10, 2016
SURVEYED BY: ADL DRANN BY: DJM CHECKED BY: RRM