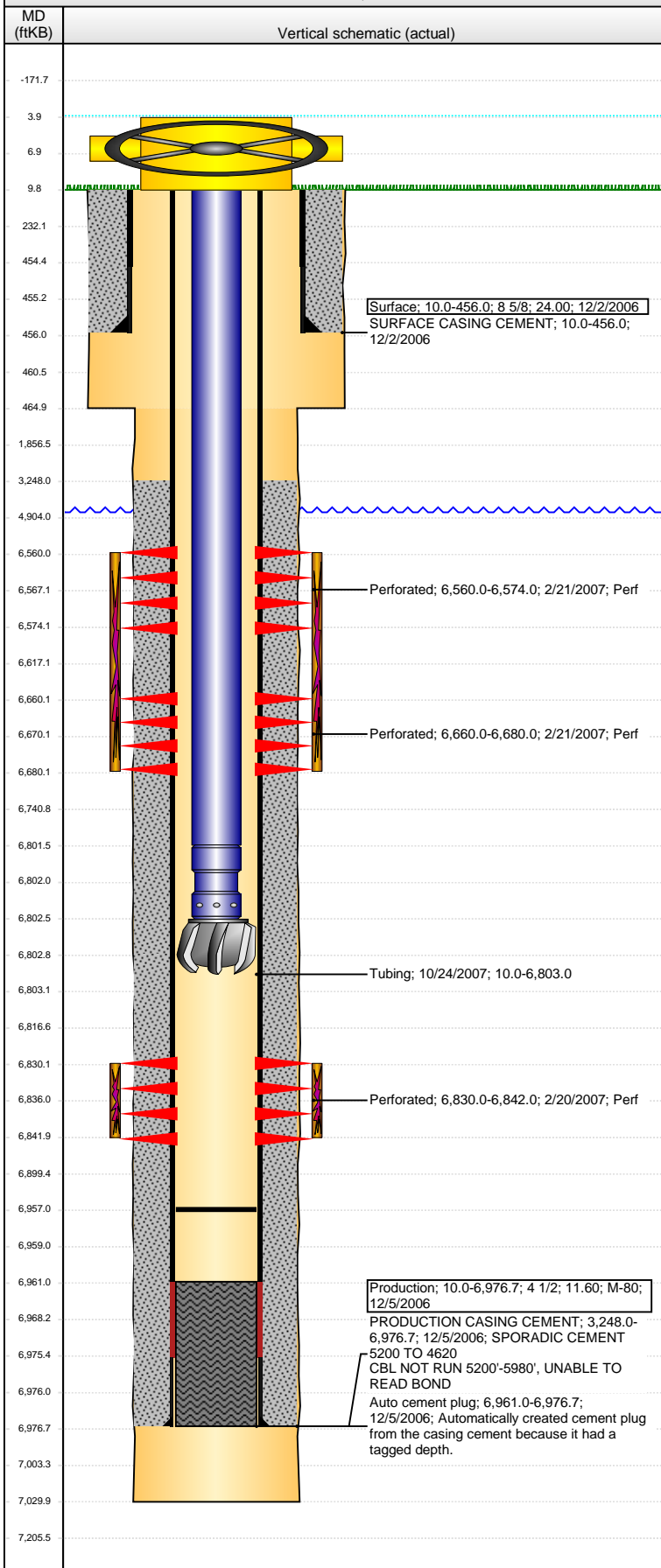


**Well Name: FOSS 14-42**

VERTICAL - ORIGINAL HOLE, 7/12/2016 2:25:11 PM



Well Header			
API	Business Unit	District	Well Config
05-123-24300	DJ BASIN	15	VERTICAL
Original KB Elevation (ft)	KB - GL / MSL (ftKB)	Spud Date	P & A Date
4,707	10.00	12/1/2006	
Comment			
Directions To Well			
Congressional Location			
Quarter 1	Quarter 2	Quarter 3	Quarter 4
		NW	SE
Section	Township	Twnshp N...	Range
14	6 N		64 W
Bottom Hole Location			
North-South Distance (ft)		From N or S Line	East-West Distance (ft)
			From E or W Line
Plug Back Total Depths			
Date	Depth (ftKB)	Method	Com
12/5/2006	6,961.0	CASING TALLY	GUIDE SHOE W/SOUE JOINT
2/19/2007	6,954.0	CASED HOLE LOG	DEPTH LOGGER ON CBL
10/24/2007	6,957.0	TAG	CLEAN OUT TO LAND TUBING
Wellbore Sections			
Section Des	Size (in)	Act Top, MD (ftKB)	Act Btm, MD (ftKB)
SURFACE	12 1/4	10	465
PRODUCTION	7 7/8	465	7,030
Zone Statuses			
Zone Name	Status Date	Status	Fluid Type
NIOBRARA	4/3/2007	PR	
CODELL	4/3/2007	PR	
Casing Strings			
Surface, 456.0ftKB			
Casing Description	Run Date	OD (in)	W/Len (l...)
Surface	12/2/2006	8 5/8	24.00
Grade	Top, MD (ft...)	MD (ftKB)	
M-80	10.0	456.0	
Production, 6,976.7ftKB			
Casing Description	Run Date	OD (in)	W/Len (l...)
Production	12/5/2006	4 1/2	11.60
Grade	Top, MD (ft...)	MD (ftKB)	
M-80	10.0	6,976.7	
Cement			
Description	Top Depth (ftKB)	Bottom Depth (ftKB)	
SURFACE CASING CEMENT	10.0	456.0	
Description	Top Depth (ftKB)	Bottom Depth (ftKB)	
PRODUCTION CASING CEMENT	3,248.0	6,976.7	
Tubing Strings			
Tubing Description	Run Date	String...	ID (in)
Tubing	10/24/2007	2 3/8	
Wt (lb/ft)	Grade	Len (ft)	Set De...
		6,793.00	
Tubing Components			
Item Des	OD (in)	Wt (lb/ft)	Grade
Tubing	2 3/8		
Seal Nipple	2 3/8		
Blade Bit	3 7/8		
Jts	Len (ft)	Btm (ftKB)	Btm (TVD) (ftKB)
220	6,791.40	6,801.4	
1	1.10	6,802.5	
1	0.50	6,803.0	
Perforation Data			
Zone	Bnch/St g	Entered Shot Total	Top (ftKB)
NIOBRARA, ORIGINAL HOLE	A	28	6,560.00
NIOBRARA, ORIGINAL HOLE	B	80	6,660.00
CODELL, ORIGINAL HOLE		48	6,830.00
Btm (ftKB)	Date		
6,574.00	2/21/2007		
6,680.00	2/21/2007		
6,842.00	2/20/2007		
Stimulations & Treatments			
Date	Zone	Primary Job Type	
2/21/2007	CODELL, ORIGINAL HOLE	DRILLING/COMPLETION - ORIGINAL	
Technical Result	Tech Result Details	Tech Result Note	
Comment			
Date	Zone	Primary Job Type	
2/21/2007	NIOBRARA, ORIGINAL HOLE	DRILLING/COMPLETION - ORIGINAL	
Technical Result	Tech Result Details	Tech Result Note	
Comment			

**Well Name: FOSS 14-42**

VERTICAL - ORIGINAL HOLE, 7/12/2016 2:25:14 PM

## Other In Hole

Run Date	Des	OD (in)	Top (ftKB)	Btm (ftKB)

## Logs

Date	Type	Top, MD (ftKB)	Btm, MD (ftKB)
12/5/2006	COMPENSATED DENSITY	3,450.0	7,001.0
12/5/2006	INDUCTION	456.0	7,021.0
2/19/2007	CBL/CCL/GR	3,150.0	6,952.0
4/15/2015	GYRO	10.0	6,700.0

