

SandRidge Energy

North Park Basin

T7N-R80W-S16

Evans 0780 5-21H

Wellbore #1

Plan: Design #1

Standard Survey Report

08 July, 2016

SandRidge Energy

Survey Report

Company:	SandRidge Energy	Local Co-ordinate Reference:	Well Evans 0780 5-21H
Project:	North Park Basin	TVD Reference:	KB @ 8152.0usft
Site:	T7N-R80W-S16	MD Reference:	KB @ 8152.0usft
Well:	Evans 0780 5-21H	North Reference:	Grid
Wellbore:	Wellbore #1	Survey Calculation Method:	Minimum Curvature
Design:	Design #1	Database:	EDMProd

Project	North Park Basin		
Map System:	US State Plane 1983	System Datum:	Mean Sea Level
Geo Datum:	North American Datum 1983		
Map Zone:	Colorado Northern Zone		

Site		T7N-R80W-S16			
Site Position:		Northing:	1,453,179.12 usft	Latitude:	40° 34' 26.505 N
From:	Map	Easting:	2,754,928.85 usft	Longitude:	106° 22' 55.973 W
Position Uncertainty:	0.0 usft	Slot Radius:	13-3/16 "	Grid Convergence:	-0.57 °

Well	Evans 0780 5-21H					
Well Position	+N-S	0.0 usft	Northing:	1,453,179.12 usft	Latitude:	40° 34' 26.505 N
	+E-W	0.0 usft	Easting:	2,754,928.85 usft	Longitude:	106° 22' 55.973 W
Position Uncertainty		0.0 usft	Wellhead Elevation:	0.0 usft	Ground Level:	8,136.0 usft

Wellbore	Wellbore #1				
Magnetics	Model Name	Sample Date	Declination (°)	Dip Angle (°)	Field Strength (nT)
	IGRF200510	12/31/2009	9.88	66.97	53,186

Design	Design #1				
Audit Notes:					
Version:	Phase:	PROTOTYPE	Tie On Depth:	0.0	
Vertical Section:	Depth From (TVD) (usft)	+N/-S (usft)	+E/-W (usft)	Direction (°)	
	0.0	0.0	0.0	174.98	

Survey Tool Program	Date	7/8/2016			
From (usft)	To (usft)	Survey (Wellbore)	Tool Name	Description	
0.0	14,450.1	Design #1 (Wellbore #1)	Sperry MWD	Fixed:v2:standard declination	

Planned Survey										
Measured Depth (usft)	Inclination (°)	Azimuth (°)	Vertical Depth (usft)	+N/-S (usft)	+E/-W (usft)	Vertical Section (usft)	Dogleg Rate (°/100usft)	Build Rate (°/100usft)	Turn Rate (°/100usft)	
0.0	0.00	0.00	0.0	0.0	0.0	0.0	0.00	0.00	0.00	
100.0	0.00	0.00	100.0	0.0	0.0	0.0	0.00	0.00	0.00	
200.0	0.00	0.00	200.0	0.0	0.0	0.0	0.00	0.00	0.00	
300.0	0.00	0.00	300.0	0.0	0.0	0.0	0.00	0.00	0.00	
400.0	0.00	0.00	400.0	0.0	0.0	0.0	0.00	0.00	0.00	
500.0	0.00	0.00	500.0	0.0	0.0	0.0	0.00	0.00	0.00	
600.0	0.00	0.00	600.0	0.0	0.0	0.0	0.00	0.00	0.00	
700.0	0.00	0.00	700.0	0.0	0.0	0.0	0.00	0.00	0.00	
800.0	0.00	0.00	800.0	0.0	0.0	0.0	0.00	0.00	0.00	
900.0	0.00	0.00	900.0	0.0	0.0	0.0	0.00	0.00	0.00	

SandRidge Energy

Survey Report

Company:	SandRidge Energy	Local Co-ordinate Reference:	Well Evans 0780 5-21H
Project:	North Park Basin	TVD Reference:	KB @ 8152.0usft
Site:	T7N-R80W-S16	MD Reference:	KB @ 8152.0usft
Well:	Evans 0780 5-21H	North Reference:	Grid
Wellbore:	Wellbore #1	Survey Calculation Method:	Minimum Curvature
Design:	Design #1	Database:	EDMProd

Planned Survey

Measured Depth (usft)	Inclination (°)	Azimuth (°)	Vertical Depth (usft)	+N/-S (usft)	+E/-W (usft)	Vertical Section (usft)	Dogleg Rate (°/100usft)	Build Rate (°/100usft)	Turn Rate (°/100usft)
1,000.0	0.00	0.00	1,000.0	0.0	0.0	0.0	0.00	0.00	0.00
1,100.0	0.00	0.00	1,100.0	0.0	0.0	0.0	0.00	0.00	0.00
1,200.0	0.00	0.00	1,200.0	0.0	0.0	0.0	0.00	0.00	0.00
1,300.0	0.00	0.00	1,300.0	0.0	0.0	0.0	0.00	0.00	0.00
1,400.0	0.00	0.00	1,400.0	0.0	0.0	0.0	0.00	0.00	0.00
1,500.0	0.00	0.00	1,500.0	0.0	0.0	0.0	0.00	0.00	0.00
1,600.0	0.00	0.00	1,600.0	0.0	0.0	0.0	0.00	0.00	0.00
1,700.0	0.00	0.00	1,700.0	0.0	0.0	0.0	0.00	0.00	0.00
1,800.0	0.00	0.00	1,800.0	0.0	0.0	0.0	0.00	0.00	0.00
1,900.0	0.00	0.00	1,900.0	0.0	0.0	0.0	0.00	0.00	0.00
2,000.0	0.00	0.00	2,000.0	0.0	0.0	0.0	0.00	0.00	0.00
2,100.0	0.00	0.00	2,100.0	0.0	0.0	0.0	0.00	0.00	0.00
2,200.0	0.00	0.00	2,200.0	0.0	0.0	0.0	0.00	0.00	0.00
2,300.0	0.00	0.00	2,300.0	0.0	0.0	0.0	0.00	0.00	0.00
2,400.0	0.00	0.00	2,400.0	0.0	0.0	0.0	0.00	0.00	0.00
2,500.0	0.00	0.00	2,500.0	0.0	0.0	0.0	0.00	0.00	0.00
2,600.0	0.00	0.00	2,600.0	0.0	0.0	0.0	0.00	0.00	0.00
2,700.0	0.00	0.00	2,700.0	0.0	0.0	0.0	0.00	0.00	0.00
2,800.0	0.00	0.00	2,800.0	0.0	0.0	0.0	0.00	0.00	0.00
2,900.0	0.00	0.00	2,900.0	0.0	0.0	0.0	0.00	0.00	0.00
3,000.0	0.00	0.00	3,000.0	0.0	0.0	0.0	0.00	0.00	0.00
3,100.0	0.00	0.00	3,100.0	0.0	0.0	0.0	0.00	0.00	0.00
3,200.0	0.00	0.00	3,200.0	0.0	0.0	0.0	0.00	0.00	0.00
3,300.0	0.00	0.00	3,300.0	0.0	0.0	0.0	0.00	0.00	0.00
3,400.0	0.00	0.00	3,400.0	0.0	0.0	0.0	0.00	0.00	0.00
3,500.0	0.00	0.00	3,500.0	0.0	0.0	0.0	0.00	0.00	0.00
3,600.0	0.00	0.00	3,600.0	0.0	0.0	0.0	0.00	0.00	0.00
3,700.0	0.00	0.00	3,700.0	0.0	0.0	0.0	0.00	0.00	0.00
3,800.0	0.00	0.00	3,800.0	0.0	0.0	0.0	0.00	0.00	0.00
3,900.0	0.00	0.00	3,900.0	0.0	0.0	0.0	0.00	0.00	0.00
4,000.0	0.00	0.00	4,000.0	0.0	0.0	0.0	0.00	0.00	0.00
4,100.0	0.00	0.00	4,100.0	0.0	0.0	0.0	0.00	0.00	0.00
4,200.0	0.00	0.00	4,200.0	0.0	0.0	0.0	0.00	0.00	0.00
4,300.0	0.00	0.00	4,300.0	0.0	0.0	0.0	0.00	0.00	0.00
4,400.0	0.00	0.00	4,400.0	0.0	0.0	0.0	0.00	0.00	0.00
4,500.0	0.00	0.00	4,500.0	0.0	0.0	0.0	0.00	0.00	0.00
4,600.0	0.00	0.00	4,600.0	0.0	0.0	0.0	0.00	0.00	0.00
4,700.0	0.00	0.00	4,700.0	0.0	0.0	0.0	0.00	0.00	0.00
4,800.0	0.00	0.00	4,800.0	0.0	0.0	0.0	0.00	0.00	0.00
4,900.0	0.00	0.00	4,900.0	0.0	0.0	0.0	0.00	0.00	0.00
5,000.0	0.00	0.00	5,000.0	0.0	0.0	0.0	0.00	0.00	0.00
5,100.0	0.00	0.00	5,100.0	0.0	0.0	0.0	0.00	0.00	0.00
5,200.0	0.00	0.00	5,200.0	0.0	0.0	0.0	0.00	0.00	0.00
5,300.0	0.00	0.00	5,300.0	0.0	0.0	0.0	0.00	0.00	0.00

SandRidge Energy

Survey Report

Company:	SandRidge Energy	Local Co-ordinate Reference:	Well Evans 0780 5-21H
Project:	North Park Basin	TVD Reference:	KB @ 8152.0usft
Site:	T7N-R80W-S16	MD Reference:	KB @ 8152.0usft
Well:	Evans 0780 5-21H	North Reference:	Grid
Wellbore:	Wellbore #1	Survey Calculation Method:	Minimum Curvature
Design:	Design #1	Database:	EDMProd

Planned Survey

Measured Depth (usft)	Inclination (°)	Azimuth (°)	Vertical Depth (usft)	+N/-S (usft)	+E/-W (usft)	Vertical Section (usft)	Dogleg Rate (°/100usft)	Build Rate (°/100usft)	Turn Rate (°/100usft)
5,400.0	0.00	0.00	5,400.0	0.0	0.0	0.0	0.00	0.00	0.00
5,500.0	0.00	0.00	5,500.0	0.0	0.0	0.0	0.00	0.00	0.00
5,600.0	0.00	0.00	5,600.0	0.0	0.0	0.0	0.00	0.00	0.00
5,700.0	0.00	0.00	5,700.0	0.0	0.0	0.0	0.00	0.00	0.00
5,800.0	0.00	0.00	5,800.0	0.0	0.0	0.0	0.00	0.00	0.00
5,900.0	0.00	0.00	5,900.0	0.0	0.0	0.0	0.00	0.00	0.00
6,000.0	0.00	0.00	6,000.0	0.0	0.0	0.0	0.00	0.00	0.00
6,100.0	0.00	0.00	6,100.0	0.0	0.0	0.0	0.00	0.00	0.00
6,200.0	0.00	0.00	6,200.0	0.0	0.0	0.0	0.00	0.00	0.00
6,300.0	0.00	0.00	6,300.0	0.0	0.0	0.0	0.00	0.00	0.00
6,400.0	0.00	0.00	6,400.0	0.0	0.0	0.0	0.00	0.00	0.00
6,500.0	0.00	0.00	6,500.0	0.0	0.0	0.0	0.00	0.00	0.00
6,600.0	0.00	0.00	6,600.0	0.0	0.0	0.0	0.00	0.00	0.00
6,700.0	0.00	0.00	6,700.0	0.0	0.0	0.0	0.00	0.00	0.00
6,800.0	0.00	0.00	6,800.0	0.0	0.0	0.0	0.00	0.00	0.00
6,900.0	0.00	0.00	6,900.0	0.0	0.0	0.0	0.00	0.00	0.00
7,000.0	0.00	0.00	7,000.0	0.0	0.0	0.0	0.00	0.00	0.00
7,100.0	0.00	0.00	7,100.0	0.0	0.0	0.0	0.00	0.00	0.00
7,200.0	0.00	0.00	7,200.0	0.0	0.0	0.0	0.00	0.00	0.00
7,300.0	0.00	0.00	7,300.0	0.0	0.0	0.0	0.00	0.00	0.00
7,407.2	0.00	0.00	7,407.2	0.0	0.0	0.0	0.00	0.00	0.00
Start Build 8.00									
7,450.0	3.42	131.30	7,450.0	-0.8	1.0	0.9	8.00	8.00	0.00
7,500.0	7.42	131.30	7,499.7	-4.0	4.5	4.3	8.00	8.00	0.00
7,550.0	11.42	131.30	7,549.1	-9.4	10.7	10.3	8.00	8.00	0.00
7,600.0	15.42	131.30	7,597.7	-17.0	19.4	18.7	8.00	8.00	0.00
7,650.0	19.42	131.30	7,645.4	-26.9	30.6	29.5	8.00	8.00	0.00
7,700.0	23.42	131.30	7,691.9	-39.0	44.3	42.7	8.00	8.00	0.00
7,750.0	27.42	131.30	7,737.1	-53.1	60.5	58.2	8.00	8.00	0.00
7,800.0	31.42	131.30	7,780.6	-69.3	78.9	76.0	8.00	8.00	0.00
7,850.0	35.42	131.30	7,822.3	-87.5	99.6	95.9	8.00	8.00	0.00
7,894.8	39.01	131.30	7,858.0	-105.4	120.0	115.5	8.00	8.00	0.00
Niobrara									
7,900.0	39.42	131.30	7,862.0	-107.6	122.4	117.9	8.00	8.00	0.00
7,950.0	43.42	131.30	7,899.5	-129.4	147.3	141.8	8.00	8.00	0.00
8,000.0	47.42	131.30	7,934.6	-152.9	174.0	167.5	8.00	8.00	0.00
8,050.0	51.42	131.30	7,967.1	-177.9	202.5	195.0	8.00	8.00	0.00
8,100.0	55.42	131.30	7,996.9	-204.4	232.7	224.0	8.00	8.00	0.00
8,150.0	59.42	131.30	8,023.8	-232.2	264.4	254.5	8.00	8.00	0.00
8,157.2	60.00	131.30	8,027.4	-236.3	269.0	259.0	8.00	8.00	0.00
Start 150.0 hold at 8157.2 MD									
8,200.0	60.00	131.30	8,048.8	-260.8	296.9	285.8	0.00	0.00	0.00
8,307.2	60.00	131.30	8,102.4	-322.1	366.6	352.9	0.00	0.00	0.00
Start DLS 10.00 TFO 66.29									

SandRidge Energy

Survey Report

Company:	SandRidge Energy	Local Co-ordinate Reference:	Well Evans 0780 5-21H
Project:	North Park Basin	TVD Reference:	KB @ 8152.0usft
Site:	T7N-R80W-S16	MD Reference:	KB @ 8152.0usft
Well:	Evans 0780 5-21H	North Reference:	Grid
Wellbore:	Wellbore #1	Survey Calculation Method:	Minimum Curvature
Design:	Design #1	Database:	EDMProd

Planned Survey

Measured Depth (usft)	Inclination (°)	Azimuth (°)	Vertical Depth (usft)	+N/-S (usft)	+E/-W (usft)	Vertical Section (usft)	Dogleg Rate (°/100usft)	Build Rate (°/100usft)	Turn Rate (°/100usft)
8,350.0	61.80	135.75	8,123.3	-347.8	393.7	381.0	10.00	4.20	10.39
8,400.0	64.07	140.75	8,146.0	-381.0	423.3	416.7	10.00	4.55	10.00
8,450.0	66.51	145.56	8,166.9	-417.4	450.5	455.2	10.00	4.88	9.61
8,500.0	69.09	150.18	8,185.8	-456.6	475.1	496.4	10.00	5.16	9.25
8,550.0	71.79	154.65	8,202.6	-498.3	496.9	539.9	10.00	5.40	8.93
8,600.0	74.59	158.98	8,217.1	-542.3	515.8	585.4	10.00	5.60	8.66
8,650.0	77.47	163.19	8,229.1	-588.2	531.5	632.5	10.00	5.76	8.42
8,700.0	80.41	167.31	8,238.7	-635.6	544.0	680.8	10.00	5.89	8.23
8,750.0	83.41	171.35	8,245.8	-684.3	553.1	730.1	10.00	5.99	8.09
8,800.0	86.43	175.35	8,250.2	-733.7	558.9	779.8	10.00	6.05	7.99
8,850.0	89.48	179.32	8,252.0	-783.6	561.2	829.8	10.00	6.09	7.94
8,858.6	90.00	180.00	8,252.0	-792.2	561.2	838.3	10.00	6.09	7.93
Start 5791.5 hold at 8858.6 MD									
8,900.0	90.00	180.00	8,252.0	-833.6	561.2	879.6	0.00	0.00	0.00
9,000.0	90.00	180.00	8,252.0	-933.6	561.2	979.2	0.00	0.00	0.00
9,100.0	90.00	180.00	8,252.0	-1,033.6	561.2	1,078.8	0.00	0.00	0.00
9,200.0	90.00	180.00	8,252.0	-1,133.6	561.2	1,178.4	0.00	0.00	0.00
9,300.0	90.00	180.00	8,252.0	-1,233.6	561.2	1,278.0	0.00	0.00	0.00
9,400.0	90.00	180.00	8,252.0	-1,333.6	561.2	1,377.6	0.00	0.00	0.00
9,500.0	90.00	180.00	8,252.0	-1,433.6	561.2	1,477.3	0.00	0.00	0.00
9,600.0	90.00	180.00	8,252.0	-1,533.6	561.2	1,576.9	0.00	0.00	0.00
9,700.0	90.00	180.00	8,252.0	-1,633.6	561.2	1,676.5	0.00	0.00	0.00
9,800.0	90.00	180.00	8,252.0	-1,733.6	561.2	1,776.1	0.00	0.00	0.00
9,900.0	90.00	180.00	8,252.0	-1,833.6	561.2	1,875.7	0.00	0.00	0.00
10,000.0	90.00	180.00	8,252.0	-1,933.6	561.2	1,975.3	0.00	0.00	0.00
10,100.0	90.00	180.00	8,252.0	-2,033.6	561.2	2,075.0	0.00	0.00	0.00
10,200.0	90.00	180.00	8,252.0	-2,133.6	561.2	2,174.6	0.00	0.00	0.00
10,300.0	90.00	180.00	8,252.0	-2,233.6	561.2	2,274.2	0.00	0.00	0.00
10,400.0	90.00	180.00	8,252.0	-2,333.6	561.2	2,373.8	0.00	0.00	0.00
10,500.0	90.00	180.00	8,252.0	-2,433.6	561.2	2,473.4	0.00	0.00	0.00
10,600.0	90.00	180.00	8,252.0	-2,533.6	561.2	2,573.0	0.00	0.00	0.00
10,700.0	90.00	180.00	8,252.0	-2,633.6	561.2	2,672.7	0.00	0.00	0.00
10,800.0	90.00	180.00	8,252.0	-2,733.6	561.2	2,772.3	0.00	0.00	0.00
10,900.0	90.00	180.00	8,252.0	-2,833.6	561.2	2,871.9	0.00	0.00	0.00
11,000.0	90.00	180.00	8,252.0	-2,933.6	561.2	2,971.5	0.00	0.00	0.00
11,100.0	90.00	180.00	8,252.0	-3,033.6	561.2	3,071.1	0.00	0.00	0.00
11,200.0	90.00	180.00	8,252.0	-3,133.6	561.2	3,170.7	0.00	0.00	0.00
11,300.0	90.00	180.00	8,252.0	-3,233.6	561.2	3,270.3	0.00	0.00	0.00
11,400.0	90.00	180.00	8,252.0	-3,333.6	561.2	3,370.0	0.00	0.00	0.00
11,500.0	90.00	180.00	8,252.0	-3,433.6	561.2	3,469.6	0.00	0.00	0.00
11,600.0	90.00	180.00	8,252.0	-3,533.6	561.2	3,569.2	0.00	0.00	0.00
11,700.0	90.00	180.00	8,252.0	-3,633.6	561.2	3,668.8	0.00	0.00	0.00
11,800.0	90.00	180.00	8,252.0	-3,733.6	561.2	3,768.4	0.00	0.00	0.00

SandRidge Energy

Survey Report

Company:	SandRidge Energy	Local Co-ordinate Reference:	Well Evans 0780 5-21H
Project:	North Park Basin	TVD Reference:	KB @ 8152.0usft
Site:	T7N-R80W-S16	MD Reference:	KB @ 8152.0usft
Well:	Evans 0780 5-21H	North Reference:	Grid
Wellbore:	Wellbore #1	Survey Calculation Method:	Minimum Curvature
Design:	Design #1	Database:	EDMProd

Planned Survey

Measured Depth (usft)	Inclination (°)	Azimuth (°)	Vertical Depth (usft)	+N/-S (usft)	+E/-W (usft)	Vertical Section (usft)	Dogleg Rate (°/100usft)	Build Rate (°/100usft)	Turn Rate (°/100usft)
11,900.0	90.00	180.00	8,252.0	-3,833.6	561.2	3,868.0	0.00	0.00	0.00
12,000.0	90.00	180.00	8,252.0	-3,933.6	561.2	3,967.7	0.00	0.00	0.00
12,100.0	90.00	180.00	8,252.0	-4,033.6	561.2	4,067.3	0.00	0.00	0.00
12,200.0	90.00	180.00	8,252.0	-4,133.6	561.2	4,166.9	0.00	0.00	0.00
12,300.0	90.00	180.00	8,252.0	-4,233.6	561.2	4,266.5	0.00	0.00	0.00
12,400.0	90.00	180.00	8,252.0	-4,333.6	561.2	4,366.1	0.00	0.00	0.00
12,500.0	90.00	180.00	8,252.0	-4,433.6	561.2	4,465.7	0.00	0.00	0.00
12,600.0	90.00	180.00	8,252.0	-4,533.6	561.2	4,565.4	0.00	0.00	0.00
12,700.0	90.00	180.00	8,252.0	-4,633.6	561.2	4,665.0	0.00	0.00	0.00
12,800.0	90.00	180.00	8,252.0	-4,733.6	561.2	4,764.6	0.00	0.00	0.00
12,900.0	90.00	180.00	8,252.0	-4,833.6	561.2	4,864.2	0.00	0.00	0.00
13,000.0	90.00	180.00	8,252.0	-4,933.6	561.2	4,963.8	0.00	0.00	0.00
13,100.0	90.00	180.00	8,252.0	-5,033.6	561.2	5,063.4	0.00	0.00	0.00
13,200.0	90.00	180.00	8,252.0	-5,133.6	561.2	5,163.0	0.00	0.00	0.00
13,300.0	90.00	180.00	8,252.0	-5,233.6	561.2	5,262.7	0.00	0.00	0.00
13,400.0	90.00	180.00	8,252.0	-5,333.6	561.2	5,362.3	0.00	0.00	0.00
13,500.0	90.00	180.00	8,252.0	-5,433.6	561.2	5,461.9	0.00	0.00	0.00
13,600.0	90.00	180.00	8,252.0	-5,533.6	561.2	5,561.5	0.00	0.00	0.00
13,700.0	90.00	180.00	8,252.0	-5,633.6	561.2	5,661.1	0.00	0.00	0.00
13,800.0	90.00	180.00	8,252.0	-5,733.6	561.2	5,760.7	0.00	0.00	0.00
13,900.0	90.00	180.00	8,252.0	-5,833.6	561.2	5,860.4	0.00	0.00	0.00
14,000.0	90.00	180.00	8,252.0	-5,933.6	561.2	5,960.0	0.00	0.00	0.00
14,100.0	90.00	180.00	8,252.0	-6,033.6	561.2	6,059.6	0.00	0.00	0.00
14,200.0	90.00	180.00	8,252.0	-6,133.6	561.2	6,159.2	0.00	0.00	0.00
14,300.0	90.00	180.00	8,252.0	-6,233.6	561.2	6,258.8	0.00	0.00	0.00
14,400.0	90.00	180.00	8,252.0	-6,333.6	561.2	6,358.4	0.00	0.00	0.00
14,450.1	90.00	180.00	8,252.0	-6,383.7	561.2	6,408.3	0.00	0.00	0.00

Design Targets

Target Name	Dip Angle (°)	Dip Dir. (°)	TVD (usft)	+N/-S (usft)	+E/-W (usft)	Northing (usft)	Easting (usft)	Latitude	Longitude
- hit/miss target									
- Shape									
Evans 5-21H	0.00	360.00	8,252.0	-6,383.7	561.2	1,446,795.40	2,755,490.02	40° 33' 23.482 N	106° 22' 47.880 W
- plan hits target center									
- Point									

Formations

Measured Depth (usft)	Vertical Depth (usft)	Name	Lithology	Dip (°)	Dip Direction (°)
7,894.8	7,858.0	Niobrara		0.00	

SandRidge Energy

Survey Report

Company:	SandRidge Energy	Local Co-ordinate Reference:	Well Evans 0780 5-21H
Project:	North Park Basin	TVD Reference:	KB @ 8152.0usft
Site:	T7N-R80W-S16	MD Reference:	KB @ 8152.0usft
Well:	Evans 0780 5-21H	North Reference:	Grid
Wellbore:	Wellbore #1	Survey Calculation Method:	Minimum Curvature
Design:	Design #1	Database:	EDMProd

Plan Annotations				
Measured Depth (usft)	Vertical Depth (usft)	Local Coordinates		Comment
		+N/-S (usft)	+E/-W (usft)	
7407	7407	0	0	Start Build 8.00
8157	8027	-236	269	Start 150.0 hold at 8157.2 MD
8307	8102	-322	367	Start DLS 10.00 TFO 66.29
8859	8252	-792	561	Start 5791.5 hold at 8858.6 MD
14,650				TD at 14650.1

Checked By: _____ Approved By: _____ Date: _____

PROJECT DETAILS: North Park Basin


Geodetic System: US State Plane 1983
Datum: North American Datum 1983
Ellipsoid: GRS 1980
Zone: Colorado Northern Zone

System Datum: Mean Sea Level

G

T

M



Azimuths to Grid North
True North: 0.57°
Magnetic North: 10.45°

Magnetic Field
Strength: 53186.3snT
Dip Angle: 66.97°
Date: 12/31/2009
Model: IGRF200510

CASING DETAILS

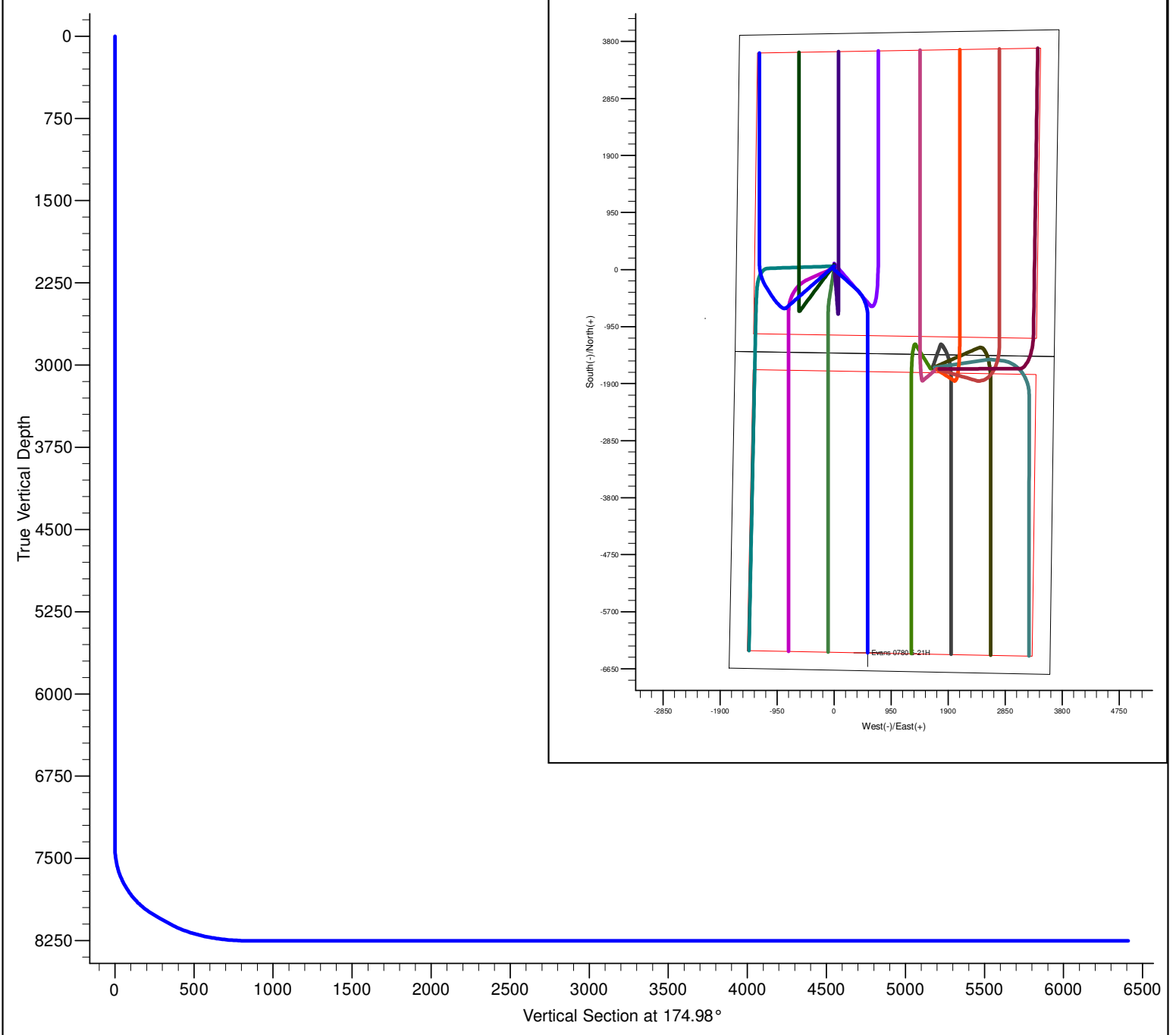
No casing data is available

DESIGN DETAILS: Design #1

0' Vertical Section coordinates

Type	Target	Azimuth	Origin	Type	N/S	E/W	From	TVD
TD		174.98	Slot		0.0	0.0		0.0

Project: North Park Basin
Site: T7N-R80W-S16
Well: Evans 0780 5-21H
Wellbore: Wellbore #1
Design: Design #1



SECTION DETAILS										
Sec	MD	Inc	Azi	TVD	+N/-S	+E/-W	Dleg	TFace	VSect	Target
1	0.0	0.00	0.00	0.0	0.0	0.0	0.00	0.00	0.0	
2	7407.2	0.00	0.00	7407.2	0.0	0.0	0.00	0.00	0.0	
3	8157.2	60.00	131.30	8027.4	-236.3	269.0	8.00	131.30	259.0	
4	8307.2	60.00	131.30	8102.4	-322.1	366.6	0.00	0.00	352.9	
5	8858.6	90.00	180.00	8252.0	-792.2	561.2	10.00	66.29	838.3	Evans 5-21H
6	14450.1	90.00	180.00	8252.0	-6383.7	561.2	0.00	0.00	6408.3	Evans 5-21H