

T7N, R80W, 6th P.M.

SandRidge Exploration & Production, LLC

Surface Location, EVANS 0780 6-21H located as shown in the SE1/4SW1/4 of SECTION 16, T7N, R80W, 6th P.M., Jackson County, Colorado.

BASIS OF BEARINGS:

US STATE PLANE 1983
CO NORTH 0501 GRID

BASIS OF ELEVATION

SPOT ELEVATION AT THE NE CORNER OF SECTION 24, T7N, R80W, 6th PM, TAKEN FROM THE COALMONT QUADRANGLE, USGS 7.5 MIN QUAD (TOPOGRAPHIC MAP) WITH SAID ELEVATION MARKED AS BEING 8223 FEET.

SURFACE USE

AGRICULTURAL/GRAZING

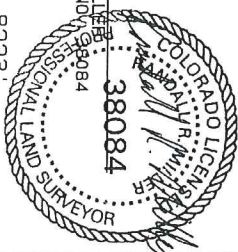
GRAPHIC SCALE 1"=1000'



CERTIFICATE

THIS IS TO CERTIFY THAT THE ABOVE PLAT WAS PREPARED FROM FIELD NOTES OF ACTUAL SURVEYS MADE BY ME OR UNDER MY SUPERVISION AND THAT THE SAME ARE TRUE AND CORRECT TO THE BEST OF MY KNOWLEDGE AND BELIEF.

RANDALL R. MILLER
COLORADO PLS NO. 38084



GL0 Brass Cap 1939
N=1451727.96, E=2758595.77 Elev. = 8223'

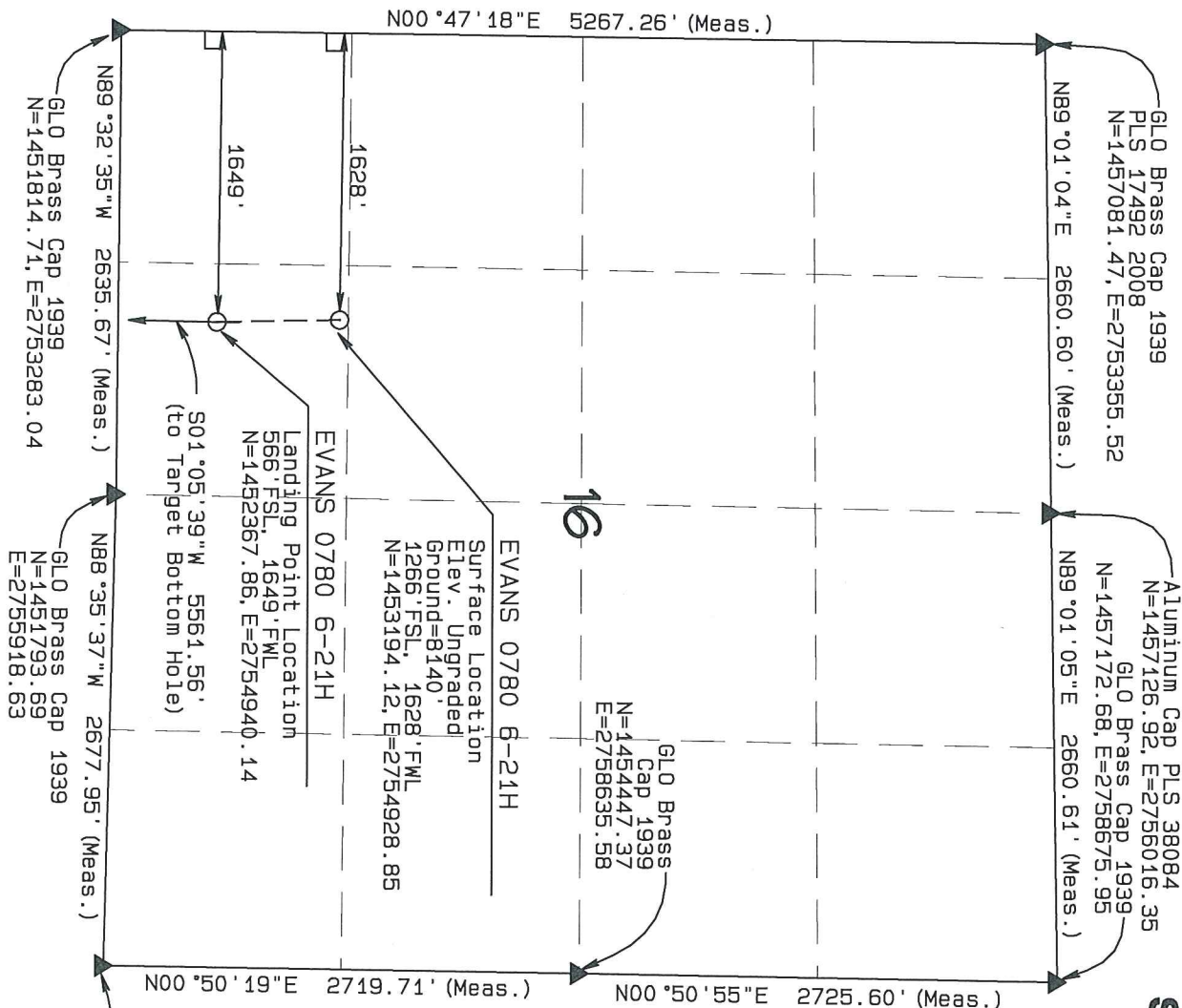
LEGEND

90° SYMBOL
FOUND CORNER
PROPOSED WELL
PROPOSED BHL/LPL

NAD 83 (SURFACE LOCATION)	
LATITUDE=40.573724°N	PDOP=1.232
LONGITUDE=106.382211°W	
NAD 83 (LANDING POINT LOCATION)	
LATITUDE=40.571803°N	
LONGITUDE=106.382145°W	

NORTH PARK ENGINEERING & CONSULTING, INC.
P.O. BOX 395
WALDEN, CO 80480
(970) 723-3725

DATE OF FIELD WORK: JUNE 16, 2016 DRAWING COMPLETION: JULY 10, 2016
SURVEYED BY: ADL DRAWN BY: DJM CHECKED BY: BRM



77N, R80W, 6th P.M.

SandRidge Exploration & Production, LLC

Bottom Hole Location, EVANS 0780 6-21H located as shown in the SE1/4SW1/4 of SECTION 21, 77N, R80W, 6th P.M., Jackson County, Colorado.

BASIS OF BEARINGS:

US STATE PLANE 1983
CO NORTH 0501 GRID

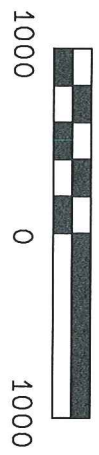
BASIS OF ELEVATION

SPOT ELEVATION AT THE NE CORNER OF SECTION 21, 77N, R80W, 6TH PM, TAKEN FROM THE COALMONT QUADRANGLE, USGS 7.5 MIN QUAD (TOPOGRAPHIC MAP) WITH SAID ELEVATION MARKED AS BEING 8223 FEET.

SURFACE USE

AGRICULTURAL/GRAZING

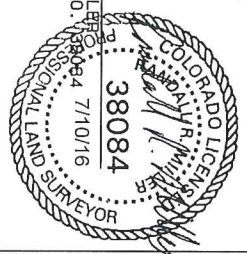
GRAPHIC SCALE 1"=1000'



CERTIFICATE

THIS IS TO CERTIFY THAT THE ABOVE PLAT WAS PREPARED FROM FIELD NOTES OF ACTUAL SURVEYS MADE BY ME OR UNDER MY SUPERVISION AND THAT THE SAME ARE TRUE AND CORRECT TO THE BEST OF MY KNOWLEDGE AND BELIEF.

RANDALL R. MILLER
COLORADO PLS NO. 138064 7/10/16



LEGEND

- 90° SYMBOL
- FOUND CORNER
- PROPOSED WELL
- PROPOSED BHL/LPL

NAD 83 (SURFACE LOCATION)	
LATITUDE=40.571803°N	PDOP=1.232
LONGITUDE=106.382155°W	
NAD 83 (TARGET BOTTOM HOLE)	
LATITUDE=40.555538°N	
LONGITUDE=106.382328°W	
NAD 83 (LANDING POINT LOCATION)	
LATITUDE=40.571803°N	
LONGITUDE=106.382145°W	

NORTH PARK ENGINEERING & CONSULTING, INC.

P.O. BOX 395
WALDEN, CO 80480
(970) 723-3723

DATE OF FIELD WORK: JUNE 16, 2016 DRAWING COMPLETION: JULY 10, 2016
SURVEYED BY: ADL DRAWN BY: DJM CHECKED BY: RRM

