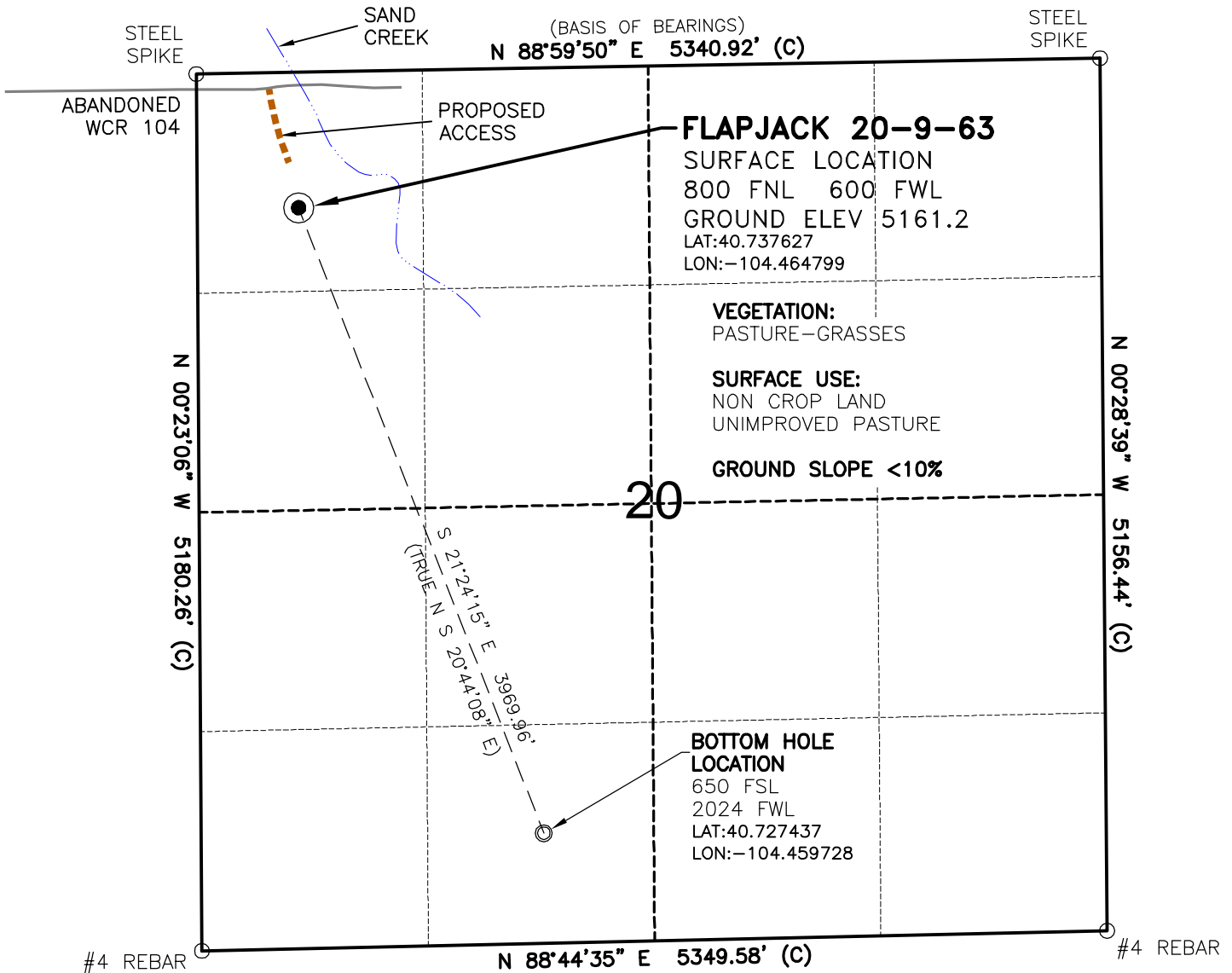


WELL LOCATION MAP

FLAPJACK 20-9-63 PAD



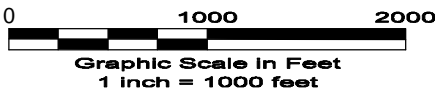
SURVEYOR'S STATEMENT

The undersigned hereby states that the well location shown hereon was staked on the ground based on existing monumentation and/or physical evidence found in the field and is correct to the best of my knowledge, information and belief.

NOTES

- 1.) Horizontal coordinates based on NGS control point "PORTER" and vertical datum based on NGS control point "A 310" with an elevation of 5253.35. NAVD 1988.
 - 2.) All directions, distances, and dimensions shown hereon are based on coordinates from the "Colorado coordinate system of 1983 north zone" (article 52 of title 38, C.R.S.).
 - 3.) All section line dimensions shown hereon are based on field measurements of existing monuments and/or physical evidence found in the field unless otherwise indicated. Refer to land survey plats deposited in Weld County.
 - 4.) Physical features shown hereon are for graphical representation only.
 - 5.) See Form 2A for visible improvements within 400' of wellhead.
 - 6.) Distances to nearest section lines are measured perpendicularly.
 - 7.) This is not a land survey nor land survey plat.
 - 8.) Date of Survey 4/28/10; Date of Drawing 5/4/10. REV 0
- PDOP Reading: 2.8 Instrument Operator: DJM

5/4/10



GEO SURV

LAND SURVEYING AND MAPPING
 LAFAYETTE - WINTER PARK
 Ph 303 666 0379 Fx 303 665 6320

SLAWSON EXPLORATION CO., INC.
 FLAPJACK 20-9-63

SL NW1/4 NW1/4 SEC. 20 T9N R63W
 BL SE1/4 SW1/4 SEC. 20 T9N R63W
 6th PM WELD COUNTY COLORADO