

<div><div><div><div></div><div>RMWS</div><div>ROCKY MOUNTAIN WIRELINE SERVICE</div></div></div></div>				TEMPERATURE CCL LOG (QUICK LOOK)				
Company		WPX ENERGY LLC						
Well		FEDERAL RU 513-6		(TIGHT HOLE)				
Field		RULISON						
County		GARFIELD		State COLORADO				
Location:		API # : 05 - 045 - 22611		Other Services				
		LAT : 39.467122 N		N/A				
		LONG: -107.824784 W						
		QtrQtr: NWSW						
SEC 6		TWP 7S		RGE 93W				
Permanent Datum		G.L.		Elevation				
Log Measured From		K.B.		Ft Above PD 24'				
Drilling Measured From		K.B.		D.F. 7736'				
				G.L. 7736'				
Date		04-12-2016						
Run Number		ONE						
Depth Driller		9197'						
Present Depth Driller		9155'						
Depth Logger		9145'						
Bottom Logged Interval		9145'						
Top Log Interval		SURFACE						
Fluid Level		FULL'						
Type Fluid		WATER						
Max. Recorded Temp.		178.5° F						
Estimated Cement Top		5340'						
Equipment Number		219						
Location		GRAND JCT.						
Recorded By		MCBROOM		JACK				
Witnessed By		MR. OAKS						
Run Number		Borehole Record		Casing Record				
ONE		Bit	From	To	Size	Weight	From	To
TWO					4.50"	11.6#	SURFACE	9187'

<<< Fold Here >>>

All interpretations are opinions based on inferences from electrical or other measurements and we cannot and do not guarantee the accuracy or correctness of any interpretation, and we shall not, except in the case of gross or willful negligence on our part, be liable or responsible for any loss, costs, damages, or expenses incurred or sustained by anyone resulting from any interpretation made by any of our officers, agents or employees. These interpretations are also subject to our general terms and conditions set out in our current Price Schedule.

WARRIOR 7.0 SOFTWARE - Comments

NOTE: THERE WAS NO LOG TO CORRELATE WITH.

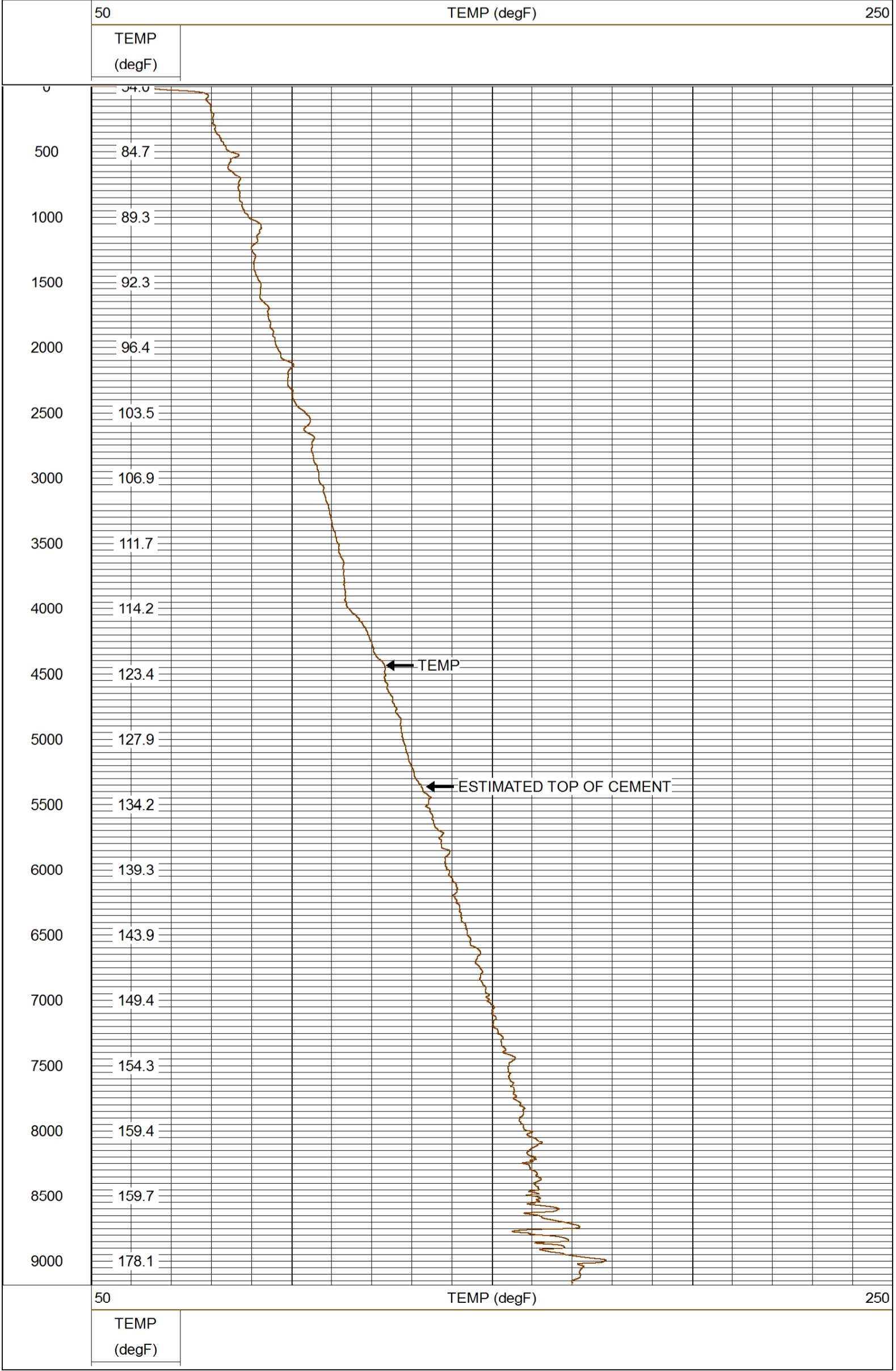
SHORT JOINT AT 5170' to 5194'.

CASING PSI = STATIC
MAIN PASS 5" = 100'



MAIN PASS (QUICK LOOK)

Database File: 04122016_wpx_fed ru 513-6.db
Dataset Pathname: mainpass/pass1.2
Presentation Format: rmtemp_q
Dataset Creation: Tue Apr 12 16:14:20 2016 by Calc SCH 120430
Charted by: Depth in Feet scaled 1:10000



Company WPX ENERGY LLC
Well FEDERAL RU 513-6 (TIGHT HOLE)
Field RULISON
County GARFIELD
State COLORADO