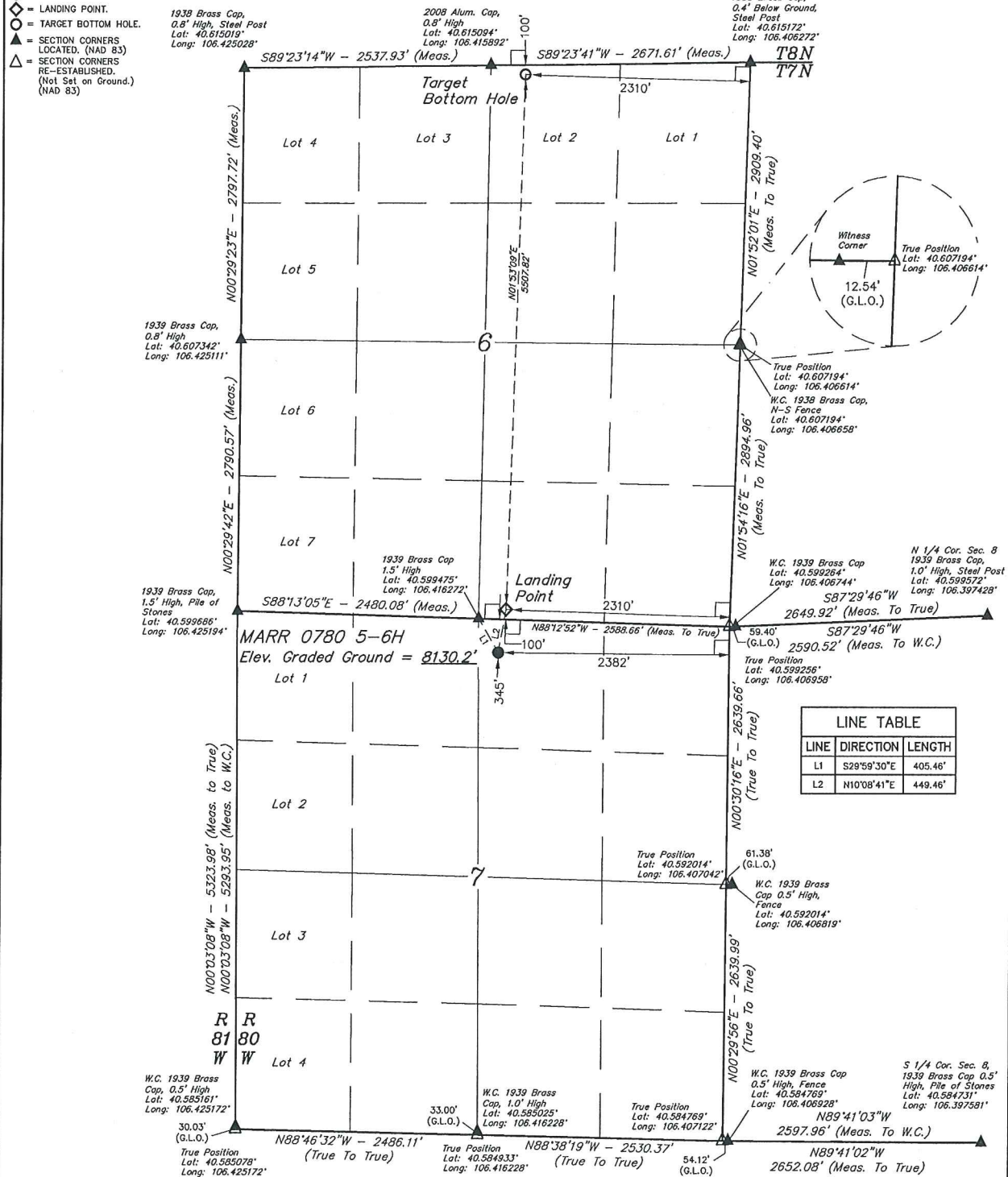


T7N, R80W, 6th P.M.

- 1938 Brass Cap,
0.8' High, Steel Post
Lat: 40.615019°
Long: 106.425028°

2008 Alum. Cap,
0.8' High
Lot: 40.615094'
Long: 106.415892'

1938 Brass Cap,
0.4' Below Ground,
Steel Post
Lat: 40.615172°
Long: 106.406272°
TOM



LINE TABLE		
LINE	DIRECTION	LENGTH
L1	S29°59'30"E	405.46'
L2	N10°08'41"E	449.46'

NAD 83 (SURFACE LOCATION)	NAD 83 (LANDING POINT)	NAD 83 (TARGET BOTTOM HOLE)
LATITUDE = 40°35'54.56" (46.598514)	LATITUDE = 40°35'59.02" (46.599728)	LATITUDE = 40°36'53.39" (46.614831)
LONGITUDE = 106°24'55.95" (106.415542)	LONGITUDE = 106°24'54.93" (106.415258)	LONGITUDE = 106°24'52.59" (106.414606)
NAD 27 (SURFACE LOCATION)	NAD 27 (LANDING POINT)	NAD 27 (TARGET BOTTOM HOLE)
LATITUDE = 40°35'54.72" (46.598533)	LATITUDE = 40°35'59.09" (46.599747)	LATITUDE = 40°36'53.47" (46.614853)
LONGITUDE = 106°24'53.84" (106.414956)	LONGITUDE = 106°24'52.81" (106.414669)	LONGITUDE = 106°24'50.48" (106.414022)
STATE PLANE NAD 83 (CO. NORTH)	STATE PLANE NAD 83 (CO. NORTH)	STATE PLANE NAD 83 (CO. NORTH)
N: 14621912.17 E: 2745763.19	N: 1462633.53 E: 2745846.82	N: 1468133.96 E: 2746083.96
STATE PLANE NAD 27 (CO. NORTH)	STATE PLANE NAD 27 (CO. NORTH)	STATE PLANE NAD 27 (CO. NORTH)
N: 462190.01 E: 1745919.42	N: 462631.43 E: 1746003.04	N: 468131.89 E: 1746260.14

THIS IS TO CERTIFY THAT THE ABOVE IS A TRUE AND CORRECT COPY OF THE NOTES OF ACTUAL SURVEYS MADE BY ME OR UNDER MY SUPERVISION AND THAT THE SAME ARE TRUE AND CORRECT TO THE BEST OF MY KNOWLEDGE AND BELIEF.

REGISTERED LAND SURVEYOR
REGISTRATION NO. 28285
STATE OF OREGON

REV: 2 05-04-16 M.D. (MOVED LANDING POINT)

SandRidge Exploration & Production, LLC

MARR 0780 5-6H
NW 1/4 NE 1/4, SECTION 7, T7N, R80W, 6th P.M.
JACKSON COUNTY, COLORADO

SURVEYED BY	C.M., G.W.	04-18-16	SCALE
DRAWN BY	M.D.	04-27-16	1" = 1000'

WELL LOCATION PLAT


UINTAH
 ENGINEERING & LAND SURVEYING

UELS, LLC
Corporate Office * 85 South 200 East
Vernal, UT 84078 * (435) 789-1017

