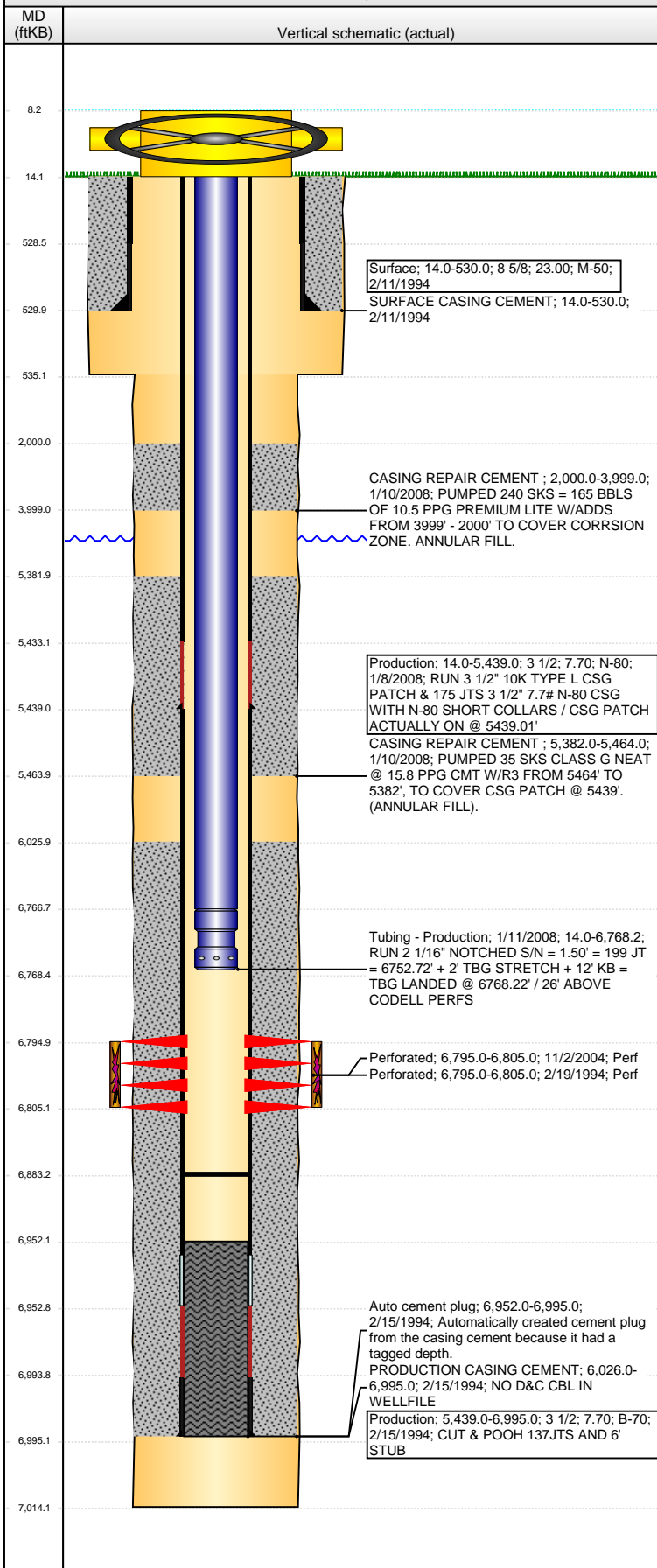


Well Name: SIDWELL 26- 1G4

VERTICAL - ORIGINAL HOLE, 2/4/2016 3:45:29 PM



Well Header

API	Business Unit	District	Well Config
05-123-17833	DJ BASIN	15	VERTICAL
Original KB Elevation (ft)	KB - GL / MSL (ftKB)	Spud Date	P & A Date
4,646.00	14.00	2/10/1994	

Comment

NO CBL ON FILE FOR NEW DRILL

1/2008 - CSG RPR - PATCH @ 5439 W/ 275 SXS.

Directions To Well

CR 64 1/2 & CR 59, N 0.2, W 0.1, N INTO

Congressional Location

Quarter 1	Quarter 2	Quarter 3	Quarter 4	Section	Township	Twnshp N...	Range	Rng E/W Dir
		NE	NE	26	6	N	64	W

Bottom Hole Location

North-South Distance (ft)	From N or S Line	East-West Distance (ft)	From E or W Line

Plug Back Total Depths

Date	Depth (ftKB)	Method	Com
2/16/1994	6,952.0	CASING TALLY	TOP OF LATCH DOWN BAFFLE
2/25/1994	6,942.0	TAG	TAG HARD FILL
1/11/2008	6,883.4	TAG	C/O DOWN TO 6883.36', FILL HARD & COULDN'T...

Wellbore Sections

Section Des	Size (in)	Act Top, MD (ftKB)	Act Btm, MD (ftKB)
Surface	12 1/4	14.0	535.0
Production	7 7/8	535.0	7,014.0

Zone Statuses

Zone Name	Status Date	Status	Fluid Type	Job	Prod Method
CODELL	3/3/1994	PR		DRILLING/CO...	
CODELL	11/16/2004	PR		RE-FRAC, 11/5...	
CODELL	2/14/2008	PR		CASING REPA...	
CODELL	2/1/2010	PR	Water		Flowing
CODELL	9/9/2015	PR			

Casing Strings

Surface, 530.0ftKB

Casing Description	Run Date	OD (in)	Wt/Len (l...)	Grade	Top, MD (ft...)	MD (ftKB)
Surface	1/8/1994	8 5/8	23.00	M-50	14.0	530.0

Production, 5,439.0ftKB

Casing Description	Run Date	OD (in)	Wt/Len (l...)	Grade	Top, MD (ft...)	MD (ftKB)
Production	1/8/2008	3 1/2	7.70	N-80	14.0	5,439.0

Production, 6,995.0ftKB

Casing Description	Run Date	OD (in)	Wt/Len (l...)	Grade	Top, MD (ft...)	MD (ftKB)
Production	2/15/1994	3 1/2	7.70	B-70	14.0	6,995.0

Cement

Description	Top Depth (ftKB)	Bottom Depth (ftKB)
SURFACE CASING CEMENT	14.0	530.0
PRODUCTION CASING CEMENT	6,026.0	6,995.0
CASING REPAIR CEMENT	2,000.0	3,999.0
CASING REPAIR CEMENT	5,382.0	5,464.0

Tubing Strings

Tubing Description	Run Date	String...	ID (in)	Wt (lb/ft)	Grade	Len (ft)	Set De...
Tubing	11/11/2004	2 1/16		3.25	J55	6,780.00	
Tubing Description	Run Date	String...	ID (in)	Wt (lb/ft)	Grade	Len (ft)	Set De...
Tubing - Production	1/11/2008	2 1/16	1.751	3.25	J-55	6,754.22	

Tubing Components

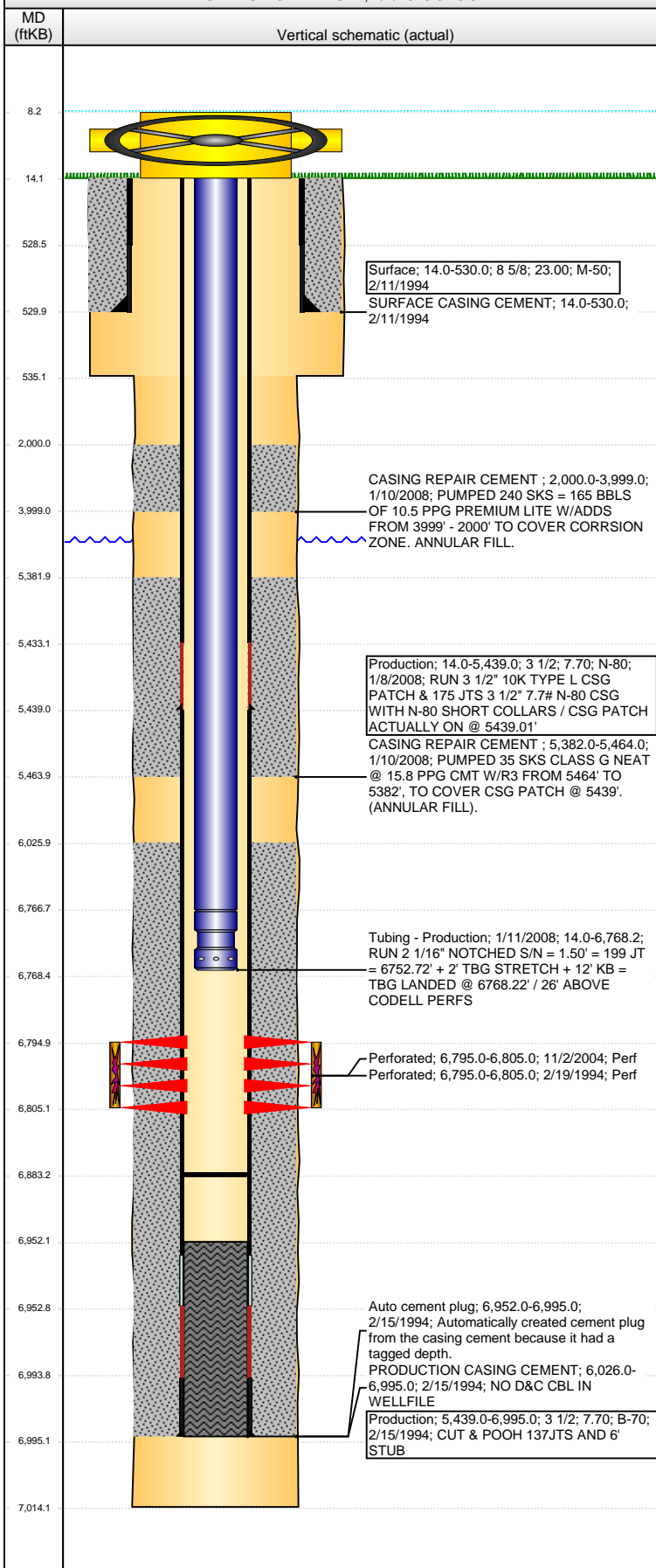
Item Des	OD (in)	Wt (lb/ft)	Grade	Jts	Len (ft)	Btm (ftKB)	Btm (TVD) (ftKB)
Tubing	2 1/16	3.25	J-55	199	6,752.72	6,766.7	
Pump Seating Nipple	2 1/16			1	1.50	6,768.2	

Perforation Data

Zone	Bnch/St g	Entered Shot Total	Top (ftKB)	Btm (ftKB)	Date
CODELL, ORIGINAL HOLE		20	6,795.00	6,805.00	2/19/1994

Well Name: SIDWELL 26- 1G4

VERTICAL - ORIGINAL HOLE, 2/4/2016 3:45:32 PM



Perforation Data

Zone	Brnch/St g	Entered Shot Total	Top (ftKB)	Btm (ftKB)	Date
CODELL, ORIGINAL HOLE		40	6,795.00	6,805.00	11/2/2004

Stimulations & Treatments

Date	Zone	Primary Job Type
2/19/1994	CODELL, ORIGINAL HOLE	DRILLING/COMPLETION - ORIGINAL
Technical Result	Tech Result Details	Tech Result Note

Comment
FRAC CODELL

Date	Zone	Primary Job Type
11/5/2004	CODELL, ORIGINAL HOLE	RE-FRAC
Technical Result	Tech Result Details	Tech Result Note

Comment
REFRAC CODELL

Other In Hole

Run Date	Des	OD (in)	Top (ftKB)	Btm (ftKB)

Logs

Date	Type	Top, MD (ftKB)	Btm, MD (ftKB)
2/15/1994	INDUCTION	529.0	7,012.0
2/18/1994	PFC LOG	6,300.0	6,922.0
1/4/2008	CBL/CCL/GR	5,840.0	6,669.0
4/25/2014	GYRO	14.0	6,600.0