

Final Reclamation Inspection



Photo 1. Aerial imagery taken 2013 using COGCC GISOnline illustrating total disturbance that needs to be reclaimed per Rule 1004. Refer to the following pictures.

Final Reclamation Inspection

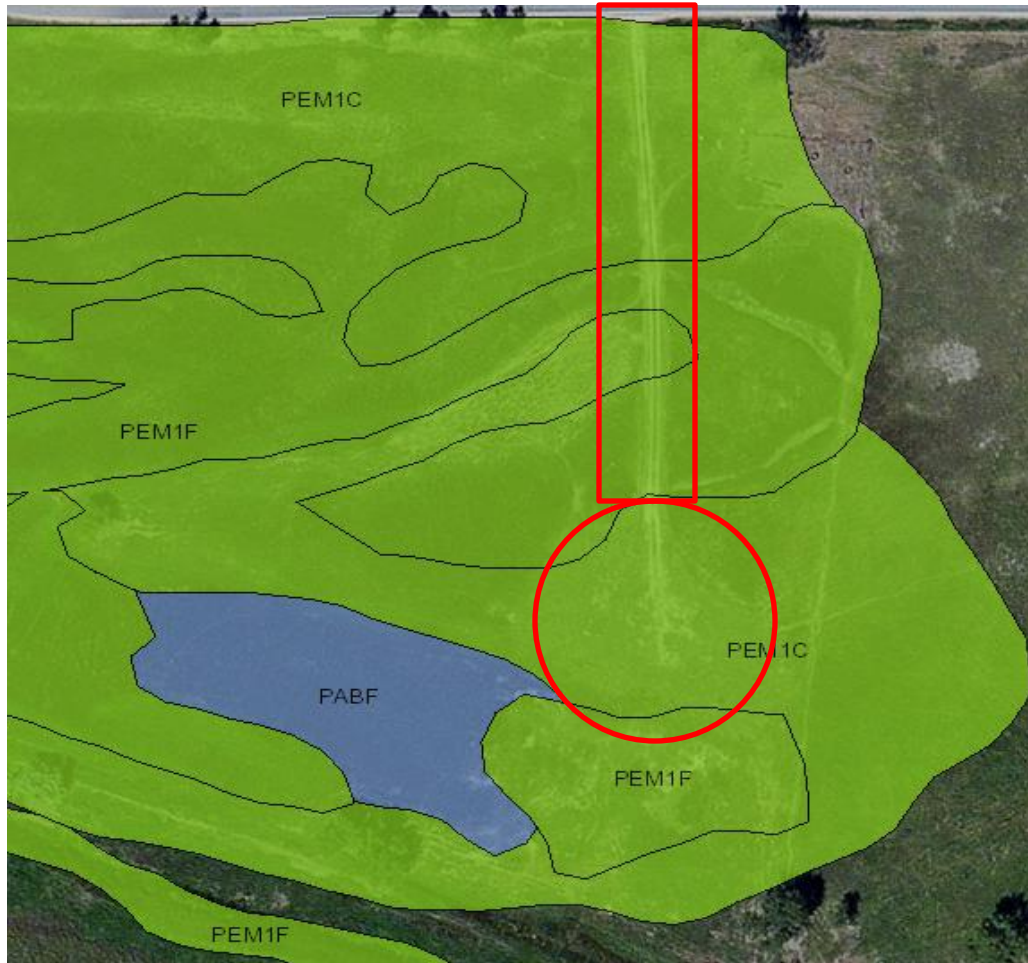


Photo 2. Aerial imagery using the U.S. Fish and Wildlife Service National Wetlands Inventory database. This area is designated to be a Freshwater Emergent Wetland.

Final Reclamation Inspection



Photo 3. Photo taken from location entrance, facing South. Access road remains and has not been reclaimed per Rule 1004.

Final Reclamation Inspection



Photo 4. Photo taken from southern location, facing North. Location does not reflect reference area conditions and noxious weeds are present along access road.

Final Reclamation Inspection



Photo 5. Photo taken from northern access road, facing East. Location does not reflect reference area conditions.

Final Reclamation Inspection



Photo 6. Photo taken from approximate center of location. It appears a seeding attempt was made.

Final Reclamation Inspection



Photo 7. Photo taken along access road, facing North. List B Colorado Noxious weed species, Canada thistle (*Cirsium arvense*), exists along access road.

Final Reclamation Inspection



Photo 8. Reference photo illustrating vegetative composition that is not reflective throughout the location.