



June 13, 2016

Mr. Matt Lepore, Director
Colorado Oil and Gas Conservation Commission
The Chancery Building
1120 Lincoln Street, Suite 801
Denver, CO 80203

RE: Anschutz Equus Farms 4-62-28-6457B2B (doc# 400912655)
Township 4 North, Range 62 West, 6th P.M.
Section 28: SWSW (surface location)
Weld County, Colorado

Proposed Wellbore Unit (640 acres):

Township 4 North, Range 62 West, 6th P.M.
Section 28- S2S2
Section 27- S2S2
Section 33- N2N2
Section 34- N2N2

Dear Mr. Lepore:

Bill Barrett Corporation ("BBC") is planning to drill the captioned boundary well in accordance with the provisions of COGCC 318A.e.

BBC's wellbore spacing unit consists of Section 28-S2S2, Section 27-S2S2, Section 33-N2N2, Section 34-N2N2 of T4N-62W, creating the above referenced spacing unit in which we will target the Niobrara formation. I certify that all of the owners within the proposed wellbore spacing unit were noticed and no objections were received.

Enclosed is a copy of the following document to assist you in your review and approval of BBC's proposed changes for the captioned well.

- Plat illustrating the proposed wellbore spacing unit on existing location plat

Thank you for your attention to the enclosed. BBC respectfully requests that the COGCC review the enclosed information and approve the proposed changes for the captioned well.

Sincerely,

A handwritten signature in blue ink, appearing to read 'Mary Pobuda', written over a horizontal line.

Mary Pobuda
Permit Analyst

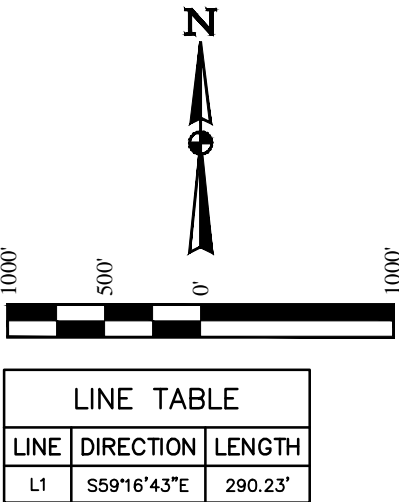
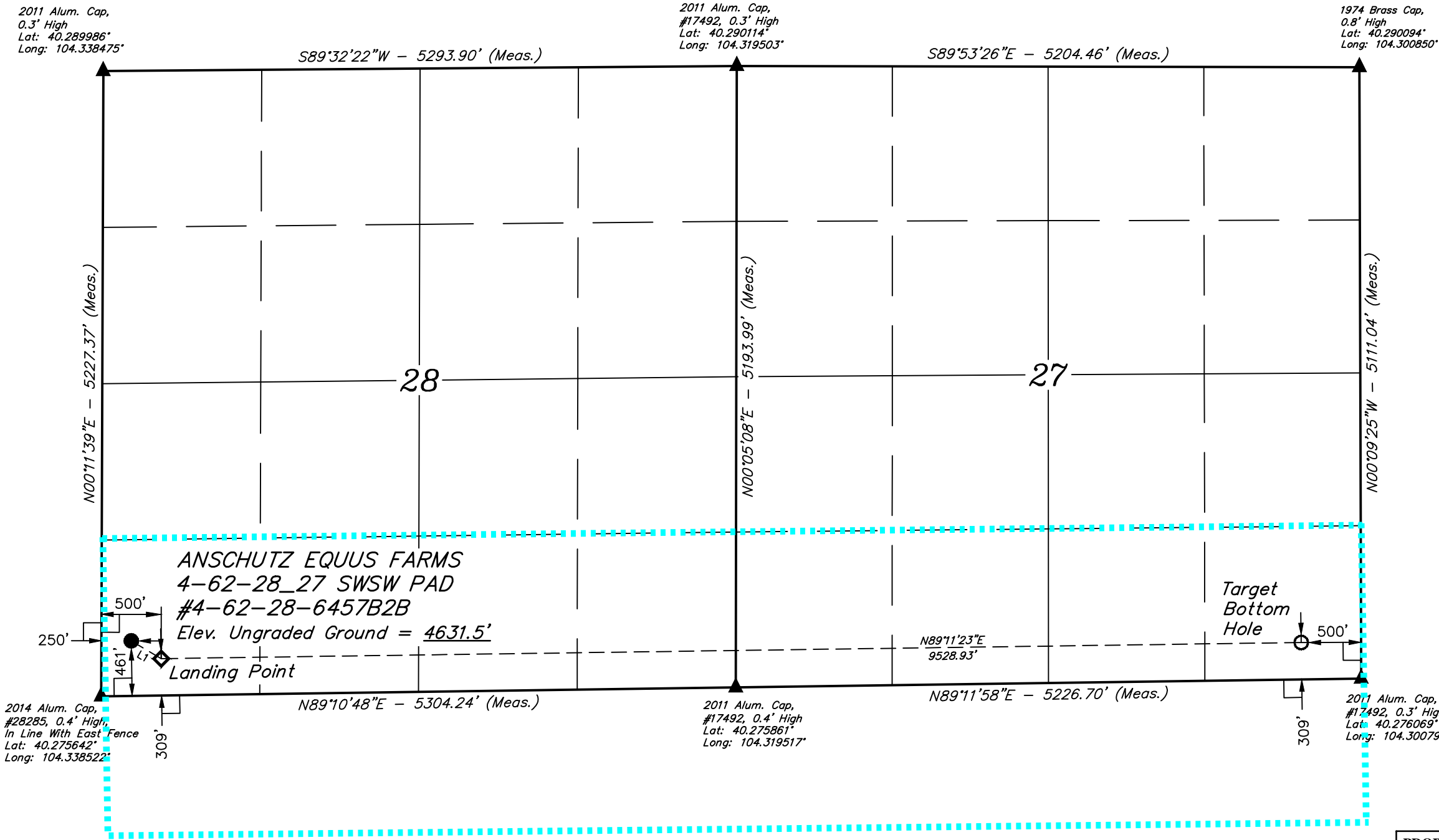
1099 18th Street, Suite 2300
Denver, CO 80202
P 303.293.9100
F 303.291.0420

T4N, R62W, 6th P.M.

BILL BARRETT CORPORATION
ANSCHUTZ EQUUS FARMS 4-62-28_27 SWSW PAD
#4-62-28-6457B2B
SW 1/4 SW 1/4, SECTION 28, T4N, R62W, 6th P.M.
WELD COUNTY, COLORADO

BASIS OF BEARINGS
BASIS OF ELEVATION

SPOT ELEVATION LOCATED AT THE NORTHEAST CORNER OF SECTION 24, T5N, R62W, 6th P.M. TAKEN FROM THE POINT OF ROCKS, QUADRANGLE, COLORADO, WELD COUNTY, 7.5 MINUTE QUAD (TOPOGRAPHIC MAP) PUBLISHED BY THE UNITED STATES DEPARTMENT OF THE INTERIOR, GEOLOGICAL SURVEY. SAID ELEVATION IS MARKED AS BEING 4530 FEET.



CERTIFICATE

THIS IS TO CERTIFY THAT THE ABOVE PLAT WAS PREPARED FROM FIELD NOTES OF ACTUAL SURVEYS MADE BY ME OR UNDER MY SUPERVISION, AND THAT THE SAME ARE TRUE AND CORRECT TO THE BEST OF MY KNOWLEDGE AND BELIEF.

REGISTERED LAND SURVEYOR
REGISTRATION NO. 28285
STATE OF COLORADO

PDOP = 1.6

LEGEND:

- 90° SYMBOL
- PROPOSED WELLHEAD.
- TARGET BOTTOM HOLE.
- LANDING POINT.
- SECTION CORNERS LOCATED.

NAD 83 (TARGET BOTTOM HOLE)	NAD 83 (LANDING POINT)	NAD 83 (SURFACE LOCATION)
LATITUDE = 40°16'36.83" (40.276897)	LATITUDE = 40°16'35.44" (40.276511)	LATITUDE = 40°16'36.90" (40.276917)
LONGITUDE = 104°18'09.32" (104.302589)	LONGITUDE = 104°20'12.22" (104.336728)	LONGITUDE = 104°20'15.44" (104.337622)
NAD 27 (TARGET BOTTOM HOLE)	NAD 27 (LANDING POINT)	NAD 27 (SURFACE LOCATION)
LATITUDE = 40°16'36.90" (40.276917)	LATITUDE = 40°16'35.50" (40.276528)	LATITUDE = 40°16'36.97" (40.276936)
LONGITUDE = 104°18'07.49" (104.302081)	LONGITUDE = 104°20'10.39" (104.336219)	LONGITUDE = 104°20'13.61" (104.337114)
STATE PLANE NAD 83 (CO. NORTH)	STATE PLANE NAD 83 (CO. NORTH)	STATE PLANE NAD 83 (CO. NORTH)
N: 1345970.50 E: 3334087.19	N: 1345702.77 E: 3324564.53	N: 1345847.50 E: 3324313.05
STATE PLANE NAD 27 (CO. NORTH)	STATE PLANE NAD 27 (CO. NORTH)	STATE PLANE NAD 27 (CO. NORTH)
N: 345973.26 E: 2334237.54	N: 345705.46 E: 2324714.87	N: 345850.19 E: 2324463.39



UELS, LLC
Corporate Office * 85 South 200 East
Vernal, UT 84078 * (435) 789-1017

SURVEYED BY: GREG WEIMER, C.J.	DATE: 09-09-15
DRAWN BY: K.B.	DATE DRAWN: 09-23-15
SCALE: 1" = 1000'	REVISED: 00-00-00

WELL LOCATION PLAT