



June 10, 2016

Mr. Matt Lepore, Director  
Colorado Oil and Gas Conservation Commission  
The Chancery Building  
1120 Lincoln Street, Suite 801  
Denver, CO 80203

RE: Anschutz Equus Farms 4-62-28-0108C2B (doc#400911005)  
Township 4 North, Range 62 West, 6th P.M.  
Section 28: NWNW (surface location)  
Weld County, Colorado

Proposed Wellbore Unit (640 acres):

Township 4 North, Range 62 West, 6<sup>th</sup> P.M.  
Section 21- S2S2  
Section 22- S2S2  
Section 27- N2N2  
Section 28- N2N2

Dear Mr. Lepore:

Bill Barrett Corporation ("BBC") is planning to drill the captioned boundary well in accordance with the provisions of COGCC 318A.e.

BBC's wellbore spacing unit consists of Section 21-S2S2, Section 22-S2S2, Section 27-N2N2, Section 28-N2N2 of T4N-62W, creating the above referenced spacing unit in which we will target the Niobrara formation. I certify that all of the owners within the proposed wellbore spacing unit were noticed and no objections were received.

Enclosed is a copy of the following document to assist you in your review and approval of BBC's proposed changes for the captioned well.

- Plat illustrating the proposed wellbore spacing unit on existing location plat

Thank you for your attention to the enclosed. BBC respectfully requests that the COGCC review the enclosed information and approve the proposed changes for the captioned well.

Sincerely,

A handwritten signature in blue ink, appearing to read 'Mary Pobuda', written over a horizontal line.

Mary Pobuda  
Permit Analyst

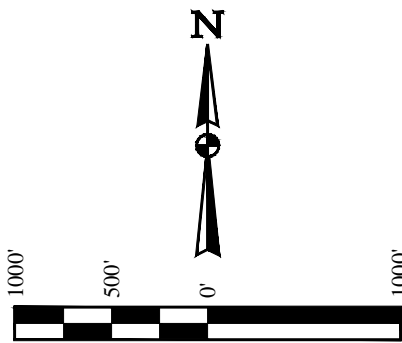
1099 18<sup>th</sup> Street, Suite 2300  
Denver, CO 80202  
P 303.293.9100  
F 303.291.0420

T4N, R62W, 6th P.M.

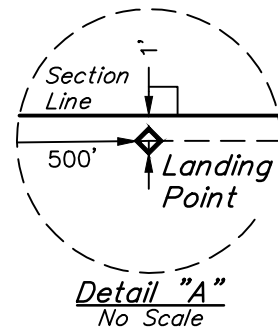
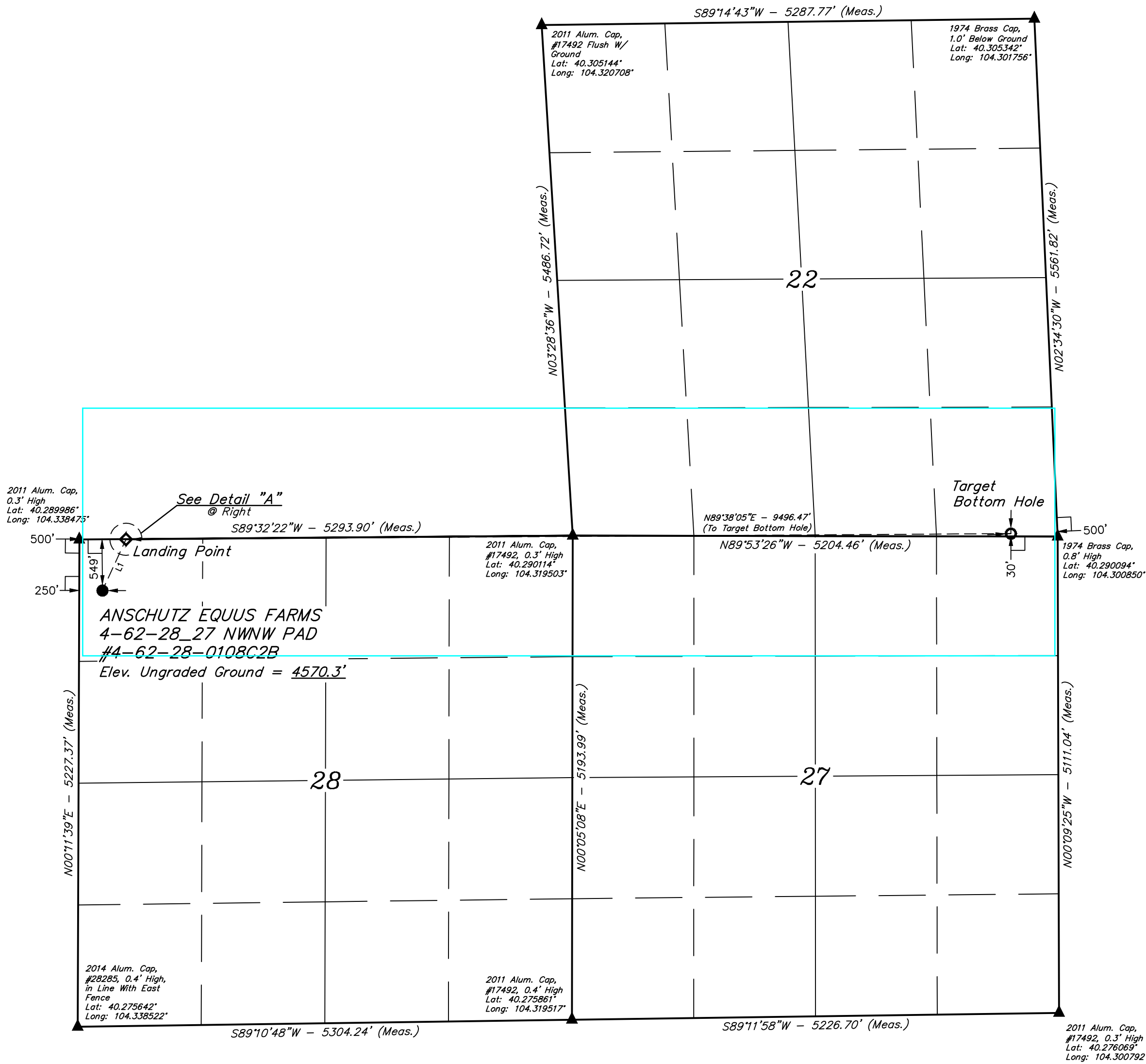
BILL BARRETT CORPORATION

ANSCHUTZ EQUUS FARMS 4-62-28\_27 NWNW PAD  
#4-62-28-0108C2B  
NW 1/4 NW 1/4, SECTION 28, T4N, R62W, 6th P.M.  
WELD COUNTY, COLORADO

BASIS OF BEARINGS  
BASIS OF ELEVATION  
SPOT ELEVATION LOCATED AT THE NORTHEAST CORNER OF SECTION 24, T5N, R62W, 6th P.M. TAKEN FROM THE POINT OF ROCKS, QUADRANGLE, COLORADO, WELD COUNTY, 7.5 MINUTE QUAD (TOPOGRAPHIC MAP) PUBLISHED BY THE UNITED STATES DEPARTMENT OF THE INTERIOR, GEOLOGICAL SURVEY. SAID ELEVATION IS MARKED AS BEING 4530 FEET.



LINE TABLE		
LINE	DIRECTION	LENGTH
L1	N24°35'36"E	605.37'




- LEGEND:
- 90° SYMBOL
  - PROPOSED WELLHEAD.
  - TARGET BOTTOM HOLE.
  - SECTION CORNERS LOCATED.
  - LANDING POINT

CERTIFICATE  
THIS IS TO CERTIFY THAT THE ABOVE SURVEY WAS PREPARED, CONDUCTED, AND THE NOTES OF ACTUAL SURVEYS MADE TO ME OR UNDER MY SUPERVISION, AND THAT THE SAME ARE TRUE AND CORRECT TO THE BEST OF MY KNOWLEDGE AND BELIEF.

REGISTERED LAND SURVEYOR  
REGISTRATION NO. 28285  
STATE OF COLORADO

PDOP = 1.3

NAD 83 (TARGET BOTTOM HOLE) LATITUDE = 40°17'24.65" (40.290181) LONGITUDE = 104°18'09.54" (104.302650)	NAD 83 (LANDING POINT) LATITUDE = 40°17'23.99" (40.289997) LONGITUDE = 104°20'12.05" (104.336681)	NAD 83 (SURFACE LOCATION) LATITUDE = 40°17'18.55" (40.288486) LONGITUDE = 104°20'15.30" (104.337583)
NAD 27 (TARGET BOTTOM HOLE) LATITUDE = 40°17'24.71" (40.290197) LONGITUDE = 104°18'07.71" (104.302142)	NAD 27 (LANDING POINT) LATITUDE = 40°17'24.05" (40.290014) LONGITUDE = 104°20'10.22" (104.336172)	NAD 27 (SURFACE LOCATION) LATITUDE = 40°17'18.61" (40.288503) LONGITUDE = 104°20'13.47" (104.337075)
STATE PLANE NAD 83 (COLORADO NORTH) N: 1350808.49 E: 3334004.58	STATE PLANE NAD 83 (COLORADO NORTH) N: 1350615.38 E: 3324512.57	STATE PLANE NAD 83 (COLORADO NORTH) N: 1350061.61 E: 3324268.40
STATE PLANE NAD 27 (COLORADO NORTH) N: 350811.13 E: 2334154.88	STATE PLANE NAD 27 (COLORADO NORTH) N: 350617.96 E: 2324662.86	STATE PLANE NAD 27 (COLORADO NORTH) N: 350064.20 E: 2324418.70



UINTEAH  
ENGINEERING & LAND SURVEYING

SURVEYED BY: ZANE BULLARD, C.J.  
DRAWN BY: C.C.  
SCALE: 1" = 1000'

DATE: 09-08-15  
DATE DRAWN: 09-23-15  
REVISED: 10-07-15 K.B.

WELL LOCATION PLAT