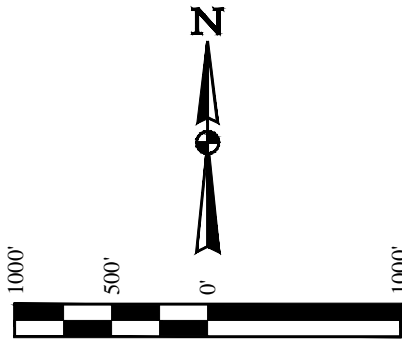


T4N, R62W, 6th P.M.

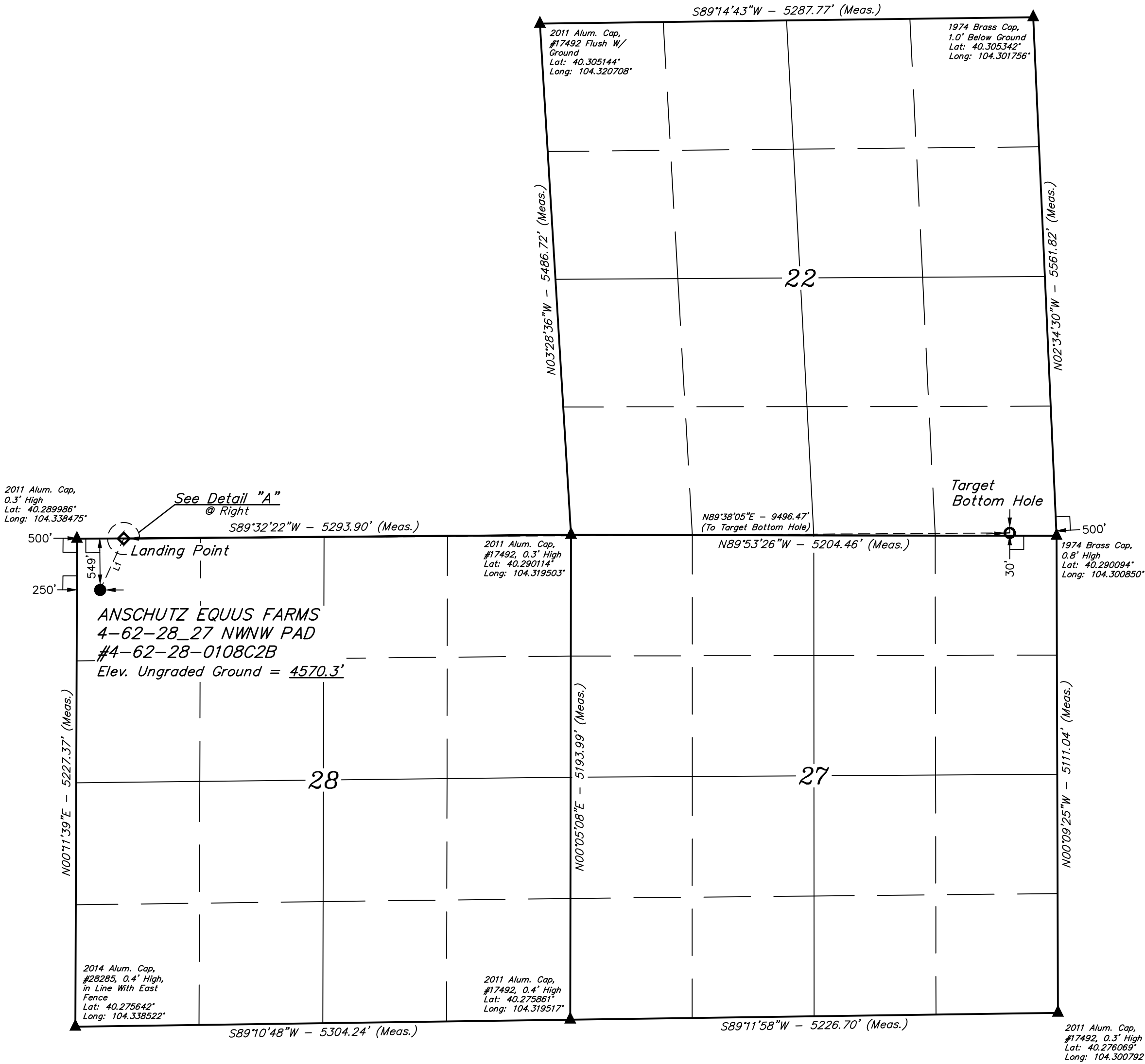
BILL BARRETT CORPORATION

ANSCHUTZ EQUUS FARMS 4-62-28_27 NWNW PAD
#4-62-28-0108C2B
NW 1/4 NW 1/4, SECTION 28, T4N, R62W, 6th P.M.
WELD COUNTY, COLORADO

BASIS OF BEARINGS
BASIS OF ELEVATION
SPOT ELEVATION LOCATED AT THE NORTHEAST CORNER OF SECTION 24, T5N, R62W, 6th P.M. TAKEN FROM THE POINT OF ROCKS, QUADRANGLE, COLORADO, WELD COUNTY, 7.5 MINUTE QUAD (TOPOGRAPHIC MAP) PUBLISHED BY THE UNITED STATES DEPARTMENT OF THE INTERIOR, GEOLOGICAL SURVEY. SAID ELEVATION IS MARKED AS BEING 4530 FEET.



LINE TABLE		
LINE	DIRECTION	LENGTH
L1	N24°35'36"E	605.37'



- LEGEND:
- 90° SYMBOL
 - PROPOSED WELLHEAD.
 - TARGET BOTTOM HOLE.
 - SECTION CORNERS LOCATED.
 - LANDING POINT

PDOP = 1.3

NAD 83 (TARGET BOTTOM HOLE)	NAD 83 (LANDING POINT)	NAD 83 (SURFACE LOCATION)
LATITUDE = 40°17'24.65" (40.290181)	LATITUDE = 40°17'23.99" (40.289997)	LATITUDE = 40°17'18.55" (40.288486)
LONGITUDE = 104°18'09.54" (104.302650)	LONGITUDE = 104°20'12.05" (104.336681)	LONGITUDE = 104°20'15.30" (104.337583)
NAD 27 (TARGET BOTTOM HOLE)	NAD 27 (LANDING POINT)	NAD 27 (SURFACE LOCATION)
LATITUDE = 40°17'24.71" (40.290197)	LATITUDE = 40°17'24.05" (40.290014)	LATITUDE = 40°17'18.61" (40.288503)
LONGITUDE = 104°18'07.71" (104.302142)	LONGITUDE = 104°20'10.22" (104.336172)	LONGITUDE = 104°20'13.47" (104.337075)
STATE PLANE NAD 83 (COLORADO NORTH)	STATE PLANE NAD 83 (COLORADO NORTH)	STATE PLANE NAD 83 (COLORADO NORTH)
N: 1350808.49 E: 3334004.58	N: 1350615.38 E: 3324512.57	N: 1350061.61 E: 3324268.40
STATE PLANE NAD 27 (COLORADO NORTH)	STATE PLANE NAD 27 (COLORADO NORTH)	STATE PLANE NAD 27 (COLORADO NORTH)
N: 350811.13 E: 2334154.88	N: 350617.96 E: 2324662.86	N: 350064.20 E: 2324418.70

CERTIFICATE
THIS IS TO CERTIFY THAT THE ABOVE NOTES WERE PREPARED, CALCULATED, AND PLOTTED BY ME OR UNDER MY SUPERVISION, AND THAT THE SAME ARE TRUE AND CORRECT TO THE BEST OF MY KNOWLEDGE AND BELIEF.

REGISTERED LAND SURVEYOR
REGISTRATION NO. 28285
STATE OF COLORADO



UELS, LLC
Corporate Office * 85 South 200 East
Vernal, UT 84078 * (435) 789-1017

SURVEYED BY: ZANE BULLARD, C.J. DATE: 09-08-15
DRAWN BY: C.C. DATE DRAWN: 09-23-15
SCALE: 1" = 1000' REVISED: 10-07-15 K.B.

WELL LOCATION PLAT