

733Operator: Synergy Resources Corporation
Well Name: Wolfson #26-1
Legal: NENE, Sec 26, T4N, R67W
Location: Weld County, CO
API: 05-123-14573




Wellbore History

Spud Date:
 Surf Csg: 8.625", 24# @ 225'
 Prod Csg: 4.5", 11.6# @ 7335'
 TOC: 6,100' from wellbore diag.
 Perfs: Niobrara: 6876'-7041'
 Codell: 7,178'-7,190'

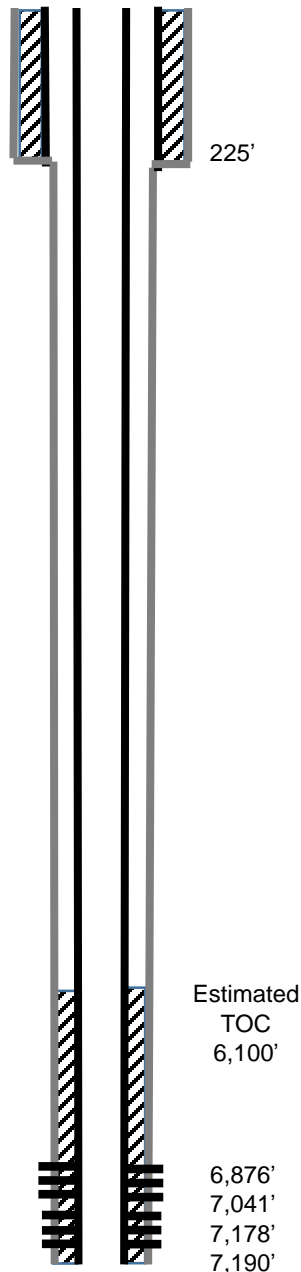
P&A Procedure

Set retainer @ 6,801' and squeeze perfs
 Pmp 14 sks @ 6,801' (100' plug)
 Cut Casing @ 450' and POOH
 Pmp 200 sx @ 500'- 0'

Key

-  Existing Cement Coverage
-  CIBP
-  Cement Pumped

Current



Proposed

